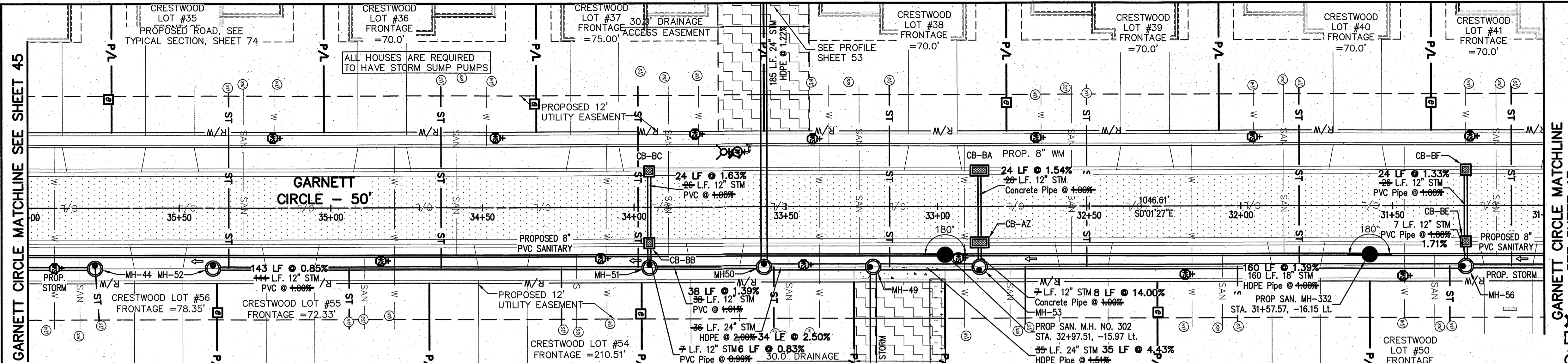


**NOTE:**  
 ANY SERVICE LATERAL CROSSING WATER MAIN SHALL MAINTAIN 18" MINIMUM CLEARANCE.  
 ALL WATER MAIN PIPE JOINTS WITHIN AREAS OF FILL MUST BE RESTRAINED.

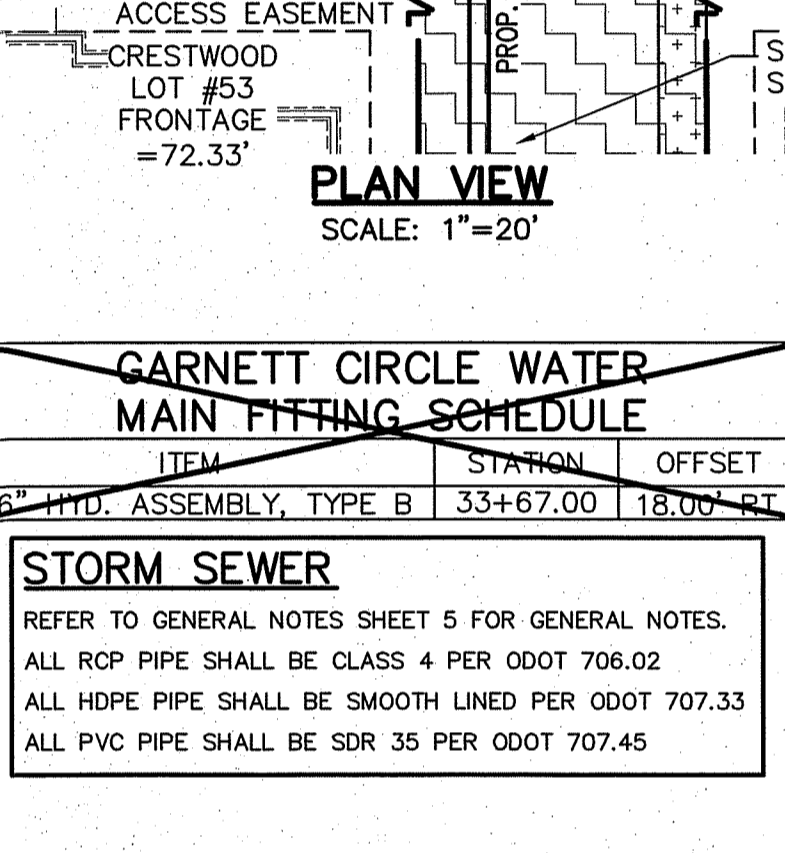


**GARNETT CIRCLE CONNECTION SCHEDULE**

UNIT	CONNECTION AT MAIN	RISER HT	LATERAL TERMINATION	LENGTH
38	SAN 33+25.80, 15.96' LT.	-	33+25.80, 40.01' RT.	59.98
38	ST 33+15.80, 20.00' LT.	-	33+15.80, 40.02' RT.	60.02
38	WAT 33+35.80, 20.49' RT.	-	33+35.80, 40.01' RT.	19.52
41	SAN 31+15.80, 16.21' LT.	-	31+15.80, 40.05' RT.	66.26
41	ST 31+10.80, 20.00' LT.	-	31+10.80, 40.04' RT.	60.04
41	WAT 31+25.80, 20.49' RT.	-	31+25.80, 40.03' RT.	19.56
50	SAN 31+36.15, 16.18' LT.	-	31+36.15, 40.00' RT.	23.82
50	ST 31+31.15, 20.00' LT.	-	31+31.15, 40.00' RT.	20.00
50	WAT 31+46.15, 20.49' RT.	-	31+46.15, 40.00' LT.	60.49
40	SAN 31+35.80, 16.12' LT.	-	31+35.80, 40.04' LT.	60.16
40	ST 31+30.80, 20.00' LT.	-	31+30.80, 40.04' RT.	60.04
40	WAT 31+95.80, 20.49' RT.	-	31+95.80, 40.04' RT.	19.55
51	SAN 32+06.15, 16.09' LT.	-	32+06.15, 40.00' LT.	23.91
51	ST 32+01.15, 20.00' LT.	-	32+01.15, 40.00' LT.	20.00
51	WAT 32+16.15, 20.49' RT.	-	32+16.15, 40.00' LT.	60.49
39	SAN 32+55.80, 20.02' LT.	-	32+55.80, 40.03' RT.	56.06
39	ST 32+50.80, 20.00' LT.	-	35+50.80, 40.03' RT.	60.03
39	WAT 32+65.80, 20.49' RT.	-	32+65.80, 40.03' RT.	19.54
52	SAN 32+76.15, 16.00' LT.	-	32+76.15, 40.00' LT.	24.00
52	ST 32+71.15, 20.00' LT.	-	32+71.15, 40.00' LT.	20.00
52	WAT 32+91.15, 20.49' RT.	-	32+91.15, 40.00' LT.	60.49

**GARNETT CIRCLE WATER MAIN FITTING SCHEDULE**

UNIT	CONNECTION AT MAIN	RISER HT	LATERAL TERMINATION	LENGTH
38	SAN 33+25.80, 15.96' LT.	-	33+25.80, 40.01' RT.	59.98
38	ST 33+15.80, 20.00' LT.	-	33+15.80, 40.02' RT.	60.02
38	WAT 33+35.80, 20.49' RT.	-	33+35.80, 40.01' RT.	19.52
53	SAN 33+49.00, 15.96' LT.	-	33+49.00, 40.00' LT.	24.04
53	ST 33+34.00, 20.00' LT.	-	33+54.00, 40.00' LT.	20.00
53	WAT 33+39.00, 20.49' RT.	-	33+39.00, 40.00' LT.	60.49
37	SAN 33+88.65, 16.95' LT.	-	33+88.65, 40.00' RT.	55.95
37	ST 33+88.65, 20.00' LT.	-	33+88.65, 40.00' RT.	60.03
37	WAT 34+18.99, 20.49' RT.	-	34+18.99, 40.00' RT.	19.51
54	SAN 34+24.00, 20.00' LT.	-	34+24.00, 40.00' LT.	24.06
54	ST 34+09.00, 20.00' LT.	-	34+09.00, 40.00' LT.	20.00
54	WAT 34+09.00, 20.49' RT.	-	34+09.00, 40.00' LT.	60.49
36	SAN 34+58.65, 15.93' LT.	3'	34+58.65, 40.00' RT.	55.93
36	ST 34+58.65, 20.00' LT.	-	34+58.65, 40.00' RT.	60.00
36	WAT 34+48.65, 20.49' RT.	-	34+48.65, 40.00' RT.	19.51
55	SAN 34+89.00, 20.00' LT.	3	34+89.00, 40.00' LT.	24.07
55	ST 34+94.00, 20.00' LT.	-	34+94.00, 40.00' LT.	20.00
55	WAT 34+79.00, 20.49' RT.	-	34+79.00, 40.00' LT.	60.49
35	SAN 35+28.65, 15.92' LT.	5'	35+28.65, 40.00' RT.	55.92
35	ST 35+33.65, 20.00' LT.	-	35+33.65, 40.00' RT.	60.00
35	WAT 35+18.65, 20.49' RT.	-	35+18.65, 40.00' RT.	19.51
56	SAN 35+82.75, 15.91' LT.	4'	35+82.75, 40.00' LT.	24.09
56	ST 35+77.77, 20.00' LT.	-	35+76.16, 40.00' LT.	20.07
56	WAT 35+91.15, 20.49' RT.	-	35+91.15, 40.00' LT.	60.49



**LEGEND**  
SEE GENERAL LEGEND, SHEET 4

- PROPOSED ROLLED CURB AND GUTTER
- PROPOSED WALK
- PROPOSED WALK BY OTHERS
- PROPOSED WATER LATERAL
- PROPOSED SANITARY LATERAL
- PROPOSED STORM LATERAL
- PROPOSED WATER MAIN
- PROPOSED SANITARY MAIN
- PROPOSED STORM MAIN
- PROPOSED C/L OF CONSTRUCTION
- PROPOSED C/L OF RIGHT OF WAY
- PROPOSED MONUMENT BOX
- PROPOSED BOTTOM OF FOOTER ELEVATION

**PROPOSED STRUCTURE TABLE**

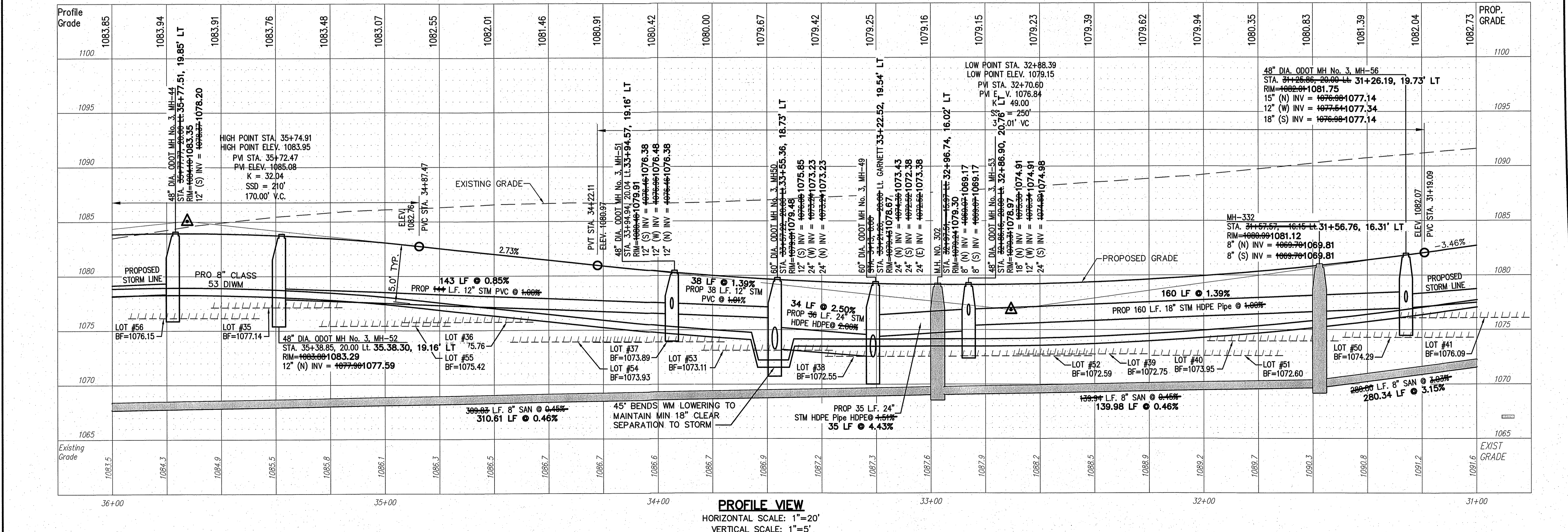
Structure Name	Structure Details
ODOT CB 3	32+86.38, STA. 32+86.16, 13.00' LT. 12.36' LT. RIM = 1079.19
CB-AZ	12" Concrete Pipe INV (W) = 1076.41, INV (E) = 1076.03
ODOT CB 3	32+86.05, STA. 32+86.16, 13.00' LT. 11.97' RT. RIM = 1079.27
CB-BA	12" Concrete Pipe INV (W) = 1076.67, INV (E) = 1076.03
ODOT CB 3A	33+94.51, STA. 33+94.51, 13.00' LT. 12.30' LT. RIM = 1080.40
CB-BB	12" PVC Pipe INV (W) = 1077.03, INV (E) = 1076.53
ODOT CB 3A	33+94.89, STA. 33+94.89, 13.00' LT. 12.02' RT. RIM = 1080.29
CB-BC	12" PVC Pipe INV (E) = 1077.29, INV (W) = 1076.92
ODOT CB 3A	31+26.11, STA. 31+26.86, 13.00' LT. 12.23' LT. RIM = 1081.88
CB-BE	12" PVC Pipe INV (W) = 1077.01, INV (E) = 1077.46
ODOT CB 3A	31+25.52, STA. 31+25.52, 13.00' LT. 11.99' RT. RIM = 1081.89
CB-BF	12" PVC Pipe INV (E) = 1077.01, INV (W) = 1077.78

**AS-BUILT LEGEND**

- DESIGNED WATER VALVE
- DESIGNED HYDRANT
- ASBUILT ELECTRIC PULLBOX
- ASBUILT WATER VALVE
- ASBUILT HYDRANT
- STORM ASBUILT
- LATERAL TERMINATION
- SANITARY ASBUILT
- LATERAL TERMINATION
- WATER ASBUILT
- LATERAL TERMINATION

**REVISIONS**

REV.	DATE	DESCRIPTION
12/9/14		BRIDGE PLAN REVISIONS



**PROFILE VIEW**  
 HORIZONTAL SCALE: 1"=20'  
 VERTICAL SCALE: 1"=5'

THE PRESERVE AT MILLER'S FARM  
 SE CORNER OF SR 18 AND MEDINA LINE RD  
 Copley, Ohio 44321

**PLAN AND PROFILE**  
**GARNETT CIRCLE**

**ISSUED FOR:**

PERMIT	06-02-14
BID	06-02-14
CONSTRUCTION	09-16-14
AS-BUILT	02-26-15
PROJECT MANAGER	DESIGNER
MAL	KB

JOB NO.  
**2013258.00**

**44/81**