

**LEGEND**

SEE GENERAL LEGEND, SHEET 4

PROPOSED ROLLED CURB AND GUTTER

PROPOSED WALK

PROPOSED WALK BY OTHERS

PROPOSED WATER LATERAL

PROPOSED SANITARY LATERAL

PROPOSED STORM LATERAL

PROPOSED WATER MAIN

PROPOSED SANITARY MAIN

PROPOSED STORM MAIN

PROPOSED C/L OF CONSTRUCTION

PROPOSED C/L OF RIGHT OF WAY

PROPOSED MONUMENT BOX

PROPOSED BOTTOM OF FOOTER ELEVATION

PROPOSED ASPHALT PAVEMENT

PROPOSED DRAINAGE ACCESS EASEMENT

**BRATTON DRIVE MONUMENT BOX SCHEDULE**

#	STATION	OFFSET
4	6+85.40	0.00'

STATION AND OFFSET TAKEN FROM CONSTRUCTION C/L

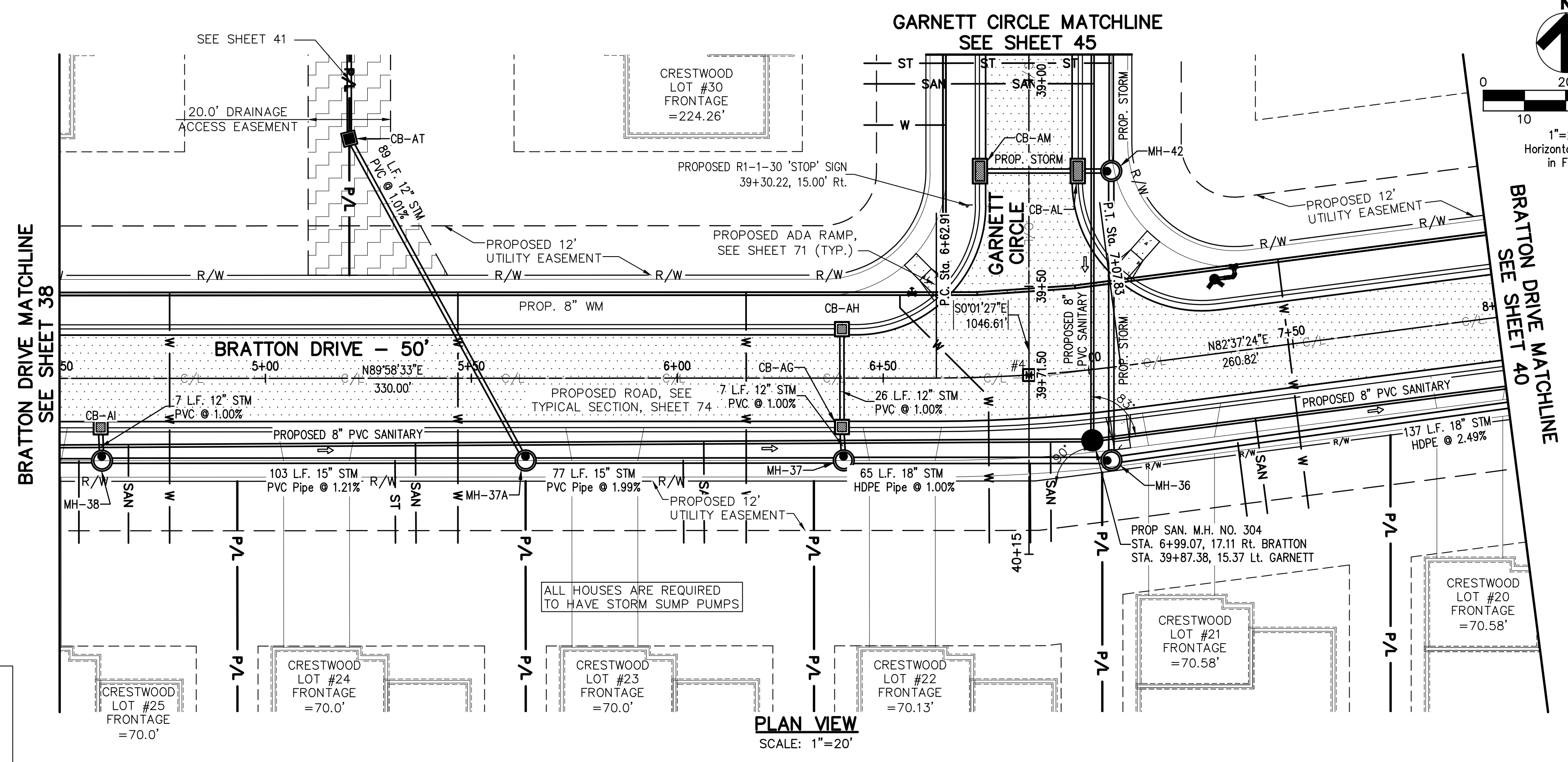
**BRATTON DRIVE WATER MAIN FITTING SCHEDULE**

ITEM	STATION	OFFSET
8" LINE VALVE	6+57.00	20.50' LT.
8" x 8" TEE	6+64.90	20.50' LT.
6" HYD. ASSEMBLY, TYPE B	7+33.17	18.00' LT.

**PROPOSED STRUCTURE TABLE**

Structure Name	Structure Details
CB-AG	ODOT CB No. 3A STA. 6+40,13.00 Rt. RIM = 1078.88 12" PVC INV (N)=1074.61 12" PVC INV (S)=1074.61
CB-AH	ODOT CB No. 3A STA. 6+40,-13.00 Lt. RIM = 1078.88 12" PVC INV (S)=1074.87
CB-AI	ODOT CB No. 3A STA. 4+60,13.00 Rt. RIM = 1085.98 12" PVC INV (S)=1081.96
CB-AT	ODOT CB 2-2B STA. 15+58,17,164.99 Rt. RIM = 1078.13 12" PVC INV (N)=1074.16 12" PVC INV (SE)=1074.16

**NOTE:**  
 ANY SERVICE LATERAL CROSSING WATER MAIN SHALL MAINTAIN 18" MINIMUM CLEARANCE.  
 ALL WATER MAIN PIPE JOINTS WITHIN AREAS OF FILL MUST BE RESTRAINED.



**BATTON DRIVE CONNECTION SCHEDULE**

UNIT	CONNECTION AT MAIN	LATERAL TERMINATION	LENGTH
25	SAN 4+66.75, 16.40' RT.	4+66.75, 40.00' RT.	23.60
	ST 4+54.71, 20.00' RT.	4+54.71, 40.00' RT.	20.00
	WAT 4+76.75, 20.50' LT.	4+76.75, 40.00' RT.	60.50
24	SAN 5+36.44, 16.03' RT.	5+36.57, 40.00' RT.	23.97
	ST 5+31.46, 20.00' RT.	5+31.57, 40.00' RT.	20.00
	WAT 5+46.74, 20.50' LT.	5+46.74, 40.00' RT.	60.50
23	SAN 6+06.43, 15.66' RT.	6+06.56, 40.00' RT.	24.34
	ST 6+01.45, 20.00' RT.	6+01.56, 40.00' RT.	20.00
	WAT 6+16.73, 20.51' LT.	6+16.73, 40.00' RT.	60.51
22	SAN 6+88.61, 16.09' RT.	6+88.65, 40.00' RT.	24.00
	ST 6+85.66, 20.75' RT.	6+85.77, 40.00' RT.	19.25
	WAT 6+54.08, 20.12' LT.	6+75.77, 40.00' RT.	69.00
21	SAN 7+38.67, 17.07' RT.	7+38.60, 40.00' RT.	22.93
	ST 7+33.66, 22.11' RT.	7+33.60, 40.00' RT.	17.89
	WAT 7+49.04, 20.50' LT.	7+48.68, 40.00' RT.	60.50

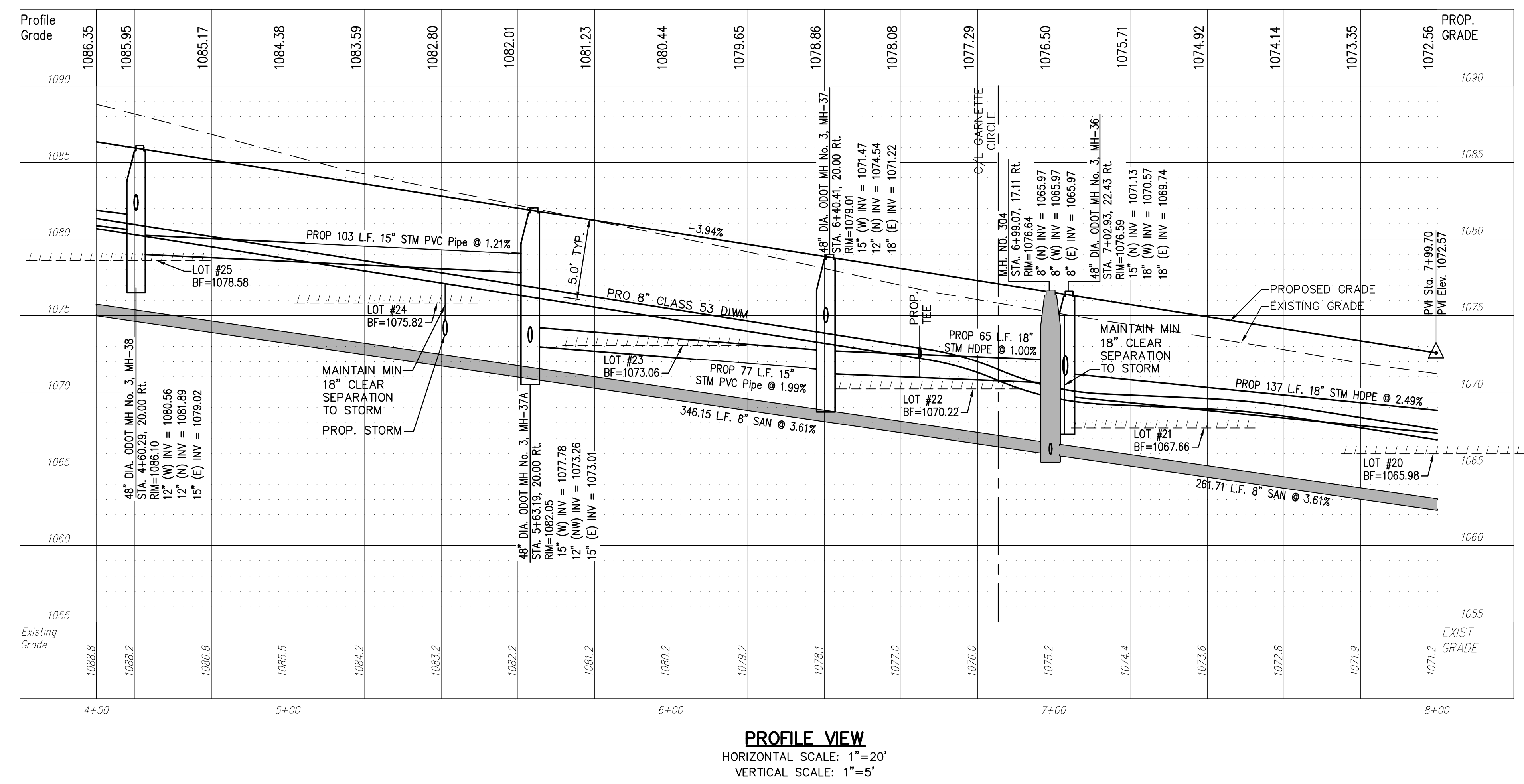
**STORM SEWER**  
 REFER TO GENERAL NOTES SHEET 5 FOR GENERAL NOTES.  
 ALL RCP PIPE SHALL BE CLASS 4 PER ODOT 706.02  
 ALL HDPE PIPE SHALL BE SMOOTH LINED PER ODOT 707.33  
 ALL PVC PIPE SHALL BE SDR 35 PER ODOT 707.45

**Underground Utilities**

2 Working Days Before You Dig  
 Call 800-362-2764 (Toll Free)  
 Ohio Utilities Protection Service

Non-members Must Be Called Directly  
 Call 800-925-0988 (Toll Free)  
 Oil & Gas Producers Utility Protection Service

**NOTE:**  
 ALL OIL AND GAS WELL REMOVALS, PLUGGING/CAPPING, AND ABANDONMENTS SHALL BE IN ACCORDANCE WITH ALL ASSOCIATED REGULATIONS FOR SUCH REMOVALS, INCLUDING BUT NOT LIMITED TO, ODNR, LOCAL, STATE, AND FEDERAL.  
 EXISTING HIGH PRESSURE GAS MAIN SHALL BE LOCATED AND PROTECTED PRIOR TO AND THROUGHOUT CONSTRUCTION.



REV.	DATE	DESCRIPTION
1	06/02/14	REVISED PER LOCAL AGENCY COMMENTS
2	06/27/14	REVISED PER LOCAL AGENCY COMMENTS
3	07/18/14	REVISED PER LOCAL AGENCY COMMENTS
4	07/25/14	REVISED PER LOCAL AGENCY COMMENTS
5	08/01/14	MILLER PARCEL UTILITY UPDATE
6	08/05/14	COMMENTS FOR GRADING APPROVAL
7	08/20/14	REVISED PER LOCAL AGENCY COMMENTS
8	08/22/14	SANITARY REVISION MH 300-302
9	09/12/14	REVISED PER LOCAL AGENCY COMMENTS

THE PRESERVE AT MILLER'S FARM  
 SE CORNER OF SR 18 AND MEDINA LINE RD  
 COPLEY, OHIO 44321

PLAN AND PROFILE  
 BRATTON DRIVE

ISSUED FOR:

PERMIT	06-02-14
BID	06-02-14
CONSTRUCTION	09-16-14
RECORD	-

PROJECT MANAGER: MAL DESIGNER: KB

JOB NO.  
**2013258.00**

**39/81**