

LEGEND

SEE GENERAL LEGEND, SHEET 4

- PROPOSED ROLLED CURB AND GUTTER
- PROPOSED WALK
- PROPOSED WALK BY OTHERS
- PROPOSED WATER LATERAL
- PROPOSED SANITARY LATERAL
- PROPOSED STORM LATERAL
- PROPOSED WATER MAIN
- PROPOSED SANITARY MAIN
- PROPOSED STORM MAIN
- PROPOSED C/L OF CONSTRUCTION
- PROPOSED C/L OF RIGHT OF WAY
- PROPOSED MONUMENT BOX
- PROPOSED BOTTOM OF FOOTER ELEVATION
- PROPOSED ASPHALT PAVEMENT
- PROPOSED DRAINAGE ACCESS EASEMENT

BRATTON DRIVE MONUMENT BOX SCHEDULE

#	STATION	OFFSET
4	6+85.40	0.00'

STATION AND OFFSET TAKEN FROM CONSTRUCTION C/L

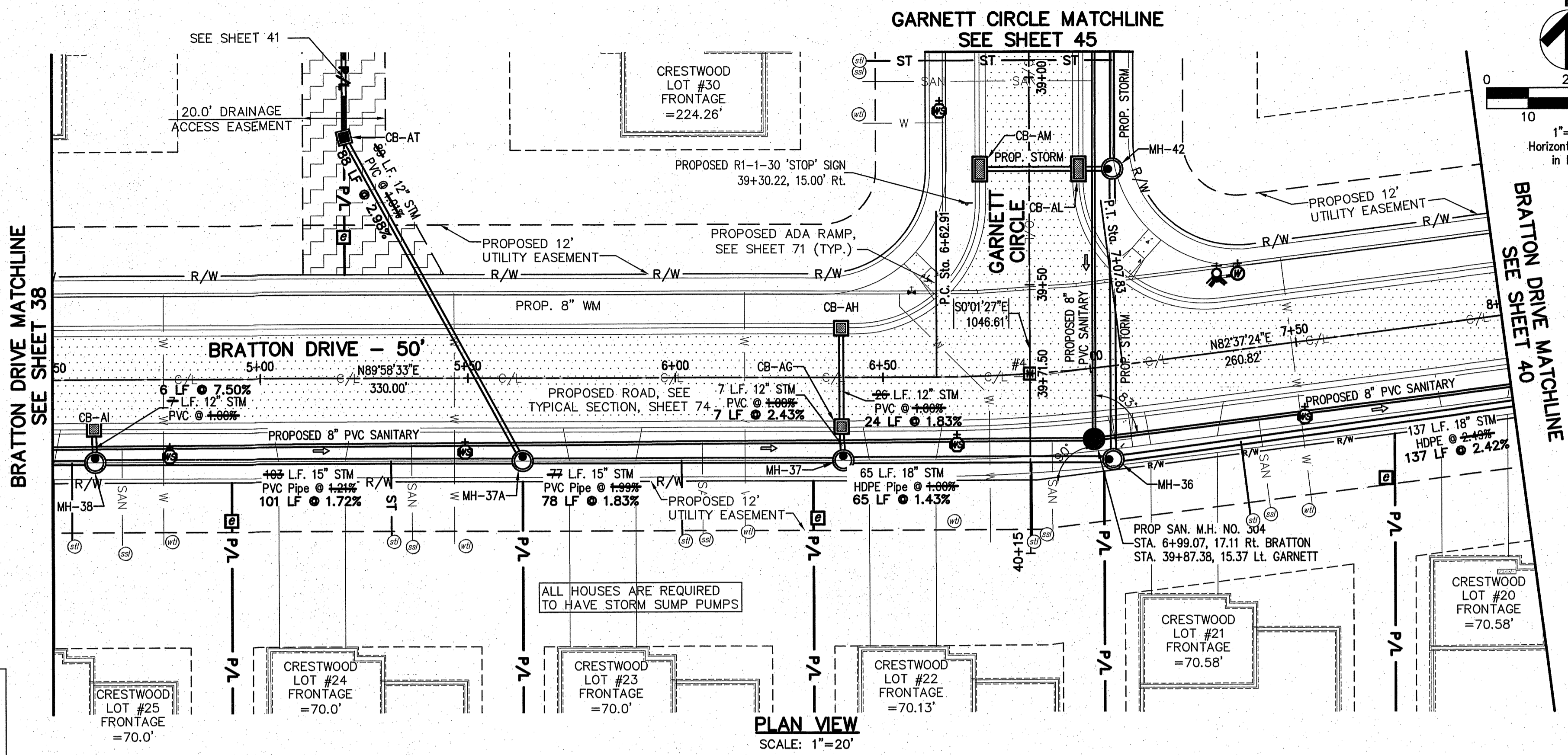
BRATTON DRIVE WATER MAIN FITTING SCHEDULE

ITEM	STATION	OFFSET
8" LINE VALVE	6+57.00	20.50' LT.
8" TEE	6+64.90	20.50' LT.
6" HYD. ASSEMBLY, TYPE B	7+33.17	18.00' LT.

PROPOSED STRUCTURE TABLE

Structure Name	Structure Details
CB-AG	ODOT CB No. 3A STA. 6+16.13 RT. 6+39.88, 11.91' RT RIM = 1078.81 12" PVC INV (N) = 1074.61 1074.06 12" PVC INV (S) = 1074.61 1074.06
CB-AH	ODOT CB No. 3A STA. 6+16.13 RT. 6+40.33, 12.47' LT RIM = 1078.82 12" PVC INV (S) = 1074.07 1074.50
CB-AI	ODOT CB No. 3A STA. 4+61.72, 11.96' RT RIM = 1085.90 12" PVC INV (S) = 1081.93
CB-AT	ODOT CB 2-2B STA. 5+19.98, 58.15' LT RIM = 1078.60 12" PVC INV (N) = 1074.46 1075.17 12" PVC INV (SE) = 1074.16 1075.17

NOTE:
 ANY SERVICE LATERAL CROSSING WATER MAIN SHALL MAINTAIN 18" MINIMUM CLEARANCE.
 ALL WATER MAIN PIPE JOINTS WITHIN AREAS OF FILL MUST BE RESTRAINED.



BATTON DRIVE CONNECTION SCHEDULE

UNIT	CONNECTION AT MAIN	RISER HEIGHT	LATERAL TERMINATION	LENGTH
25	SAN 4+66.75, 16.40' RT.	-	4+66.75, 40.00' RT.	23.60
	ST 4+54.71, 20.00' RT.	-	4+54.71, 40.00' RT.	20.00
	WAT 4+76.75, 20.50' LT.	-	4+76.75, 40.00' RT.	60.50
24	SAN 5+36.44, 16.03' RT.	-	5+36.57, 40.00' RT.	23.97
	ST 5+31.46, 20.00' RT.	-	5+31.57, 40.00' RT.	20.00
	WAT 5+46.74, 20.50' LT.	-	5+46.74, 40.00' RT.	60.50
23	SAN 6+06.43, 15.66' RT.	-	6+06.56, 40.00' RT.	24.34
	ST 6+01.45, 20.00' RT.	-	6+01.56, 40.00' RT.	20.00
	WAT 6+16.73, 20.51' LT.	-	6+16.73, 40.00' RT.	60.51
22	SAN 6+88.61, 16.09' RT.	-	6+88.68, 40.00' RT.	24.00
	ST 6+85.62, 20.75' RT.	-	6+85.77, 40.00' RT.	19.25
	WAT 6+54.08, 20.12' LT.	-	6+54.08, 40.00' RT.	69.00
21	SAN 7+38.67, 17.07' RT.	-	7+38.60, 40.00' RT.	22.93
	ST 7+33.66, 22.11' RT.	-	7+33.60, 40.00' RT.	17.89
	WAT 7+49.04, 20.50' LT.	-	7+48.68, 40.00' RT.	60.56

STORM SEWER
 REFER TO GENERAL NOTES SHEET 5 FOR GENERAL NOTES.
 ALL ROP PIPE SHALL BE CLASS 4 PER ODOT 706.02
 ALL HDPE PIPE SHALL BE SMOOTH LINED PER ODOT 707.33
 ALL PVC PIPE SHALL BE SDR 35 PER ODOT 707.45

Underground Utilities

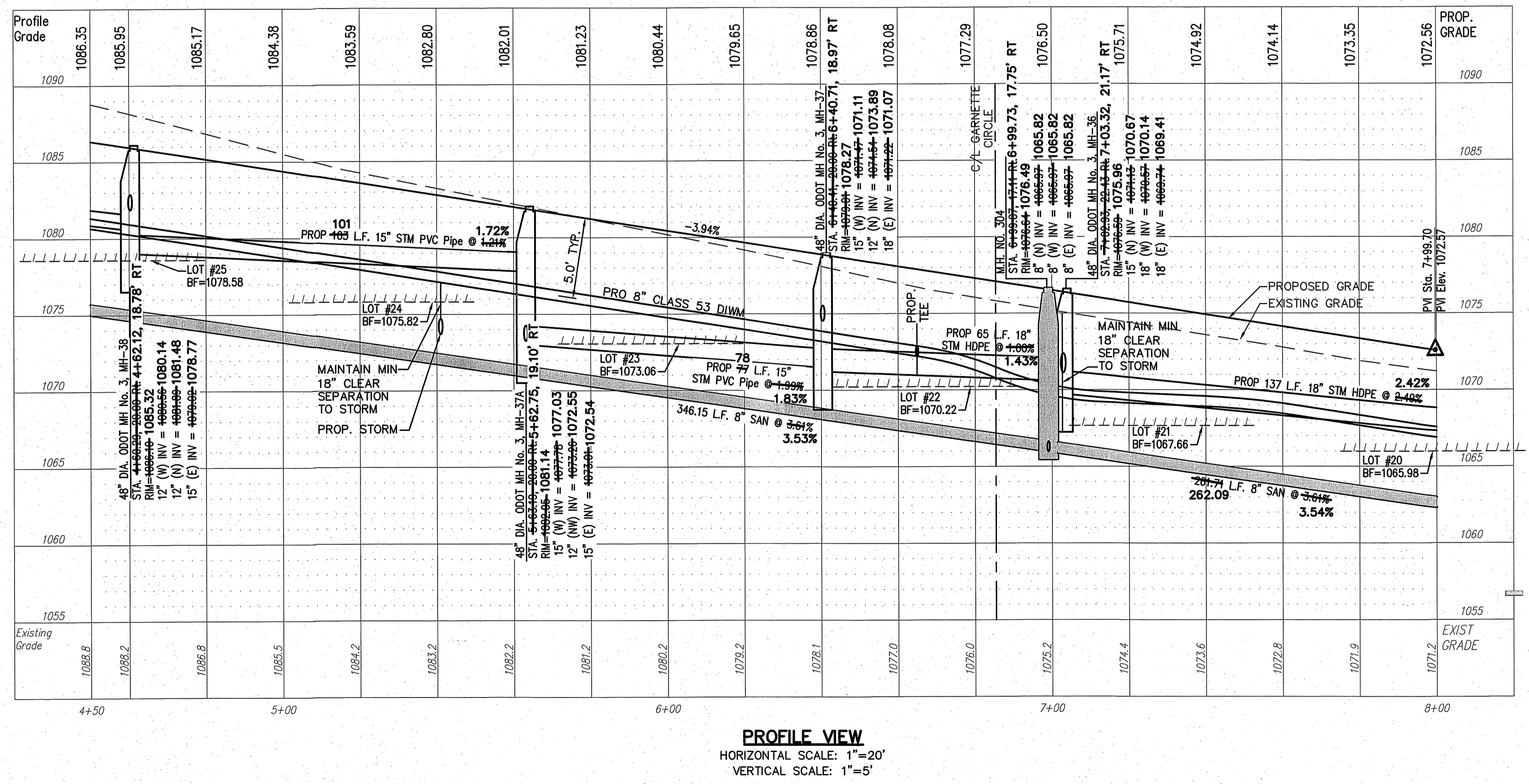
2 Working Days Before You Dig
 Call 800-362-2764 (Toll Free)
 Ohio Utilities Protection Service

Non-members Must Be Called Directly
 Call 800-925-0988 (Toll Free)
 Oil & Gas Producers Utility Protection Service

AS-BUILT LEGEND

- DESIGNED WATER VALVE
- DESIGNED HYDRANT
- ASBUILT ELECTRIC PULLBOX
- ASBUILT WATER VALVE
- ASBUILT HYDRANT
- STORM ASBUILT LATERAL TERMINATION
- SANITARY ASBUILT LATERAL TERMINATION
- WATER ASBUILT LATERAL TERMINATION

NOTE:
 ALL OIL AND GAS WELL REMOVALS, PLUGGING/CAPPING, AND ABANDONMENTS SHALL BE IN ACCORDANCE WITH ALL ASSOCIATED REGULATIONS FOR SUCH REMOVALS, INCLUDING BUT NOT LIMITED TO, ODNR, LOCAL, STATE, AND FEDERAL.
 EXISTING HIGH PRESSURE GAS MAIN SHALL BE LOCATED AND PROTECTED PRIOR TO AND THROUGHOUT CONSTRUCTION.



REV	DATE	DESCRIPTION
1	12/8/14	BRIDGE PLAN REVISIONS

THE PRESERVE AT MILLER'S FARM
 SE CORNER OF SR 18 AND MEDINA LINE RD
 COPLEY, OHIO 44321

PLAN AND PROFILE
 BRATTON DRIVE

ISSUED FOR:

PERMIT	06-02-14
BID	06-02-14
CONSTRUCTION	09-16-14
AS-BUILT	02-26-15

PROJECT MANAGER	DESIGNER
MAL	KB

JOB NO.
2013258.00

39/81