

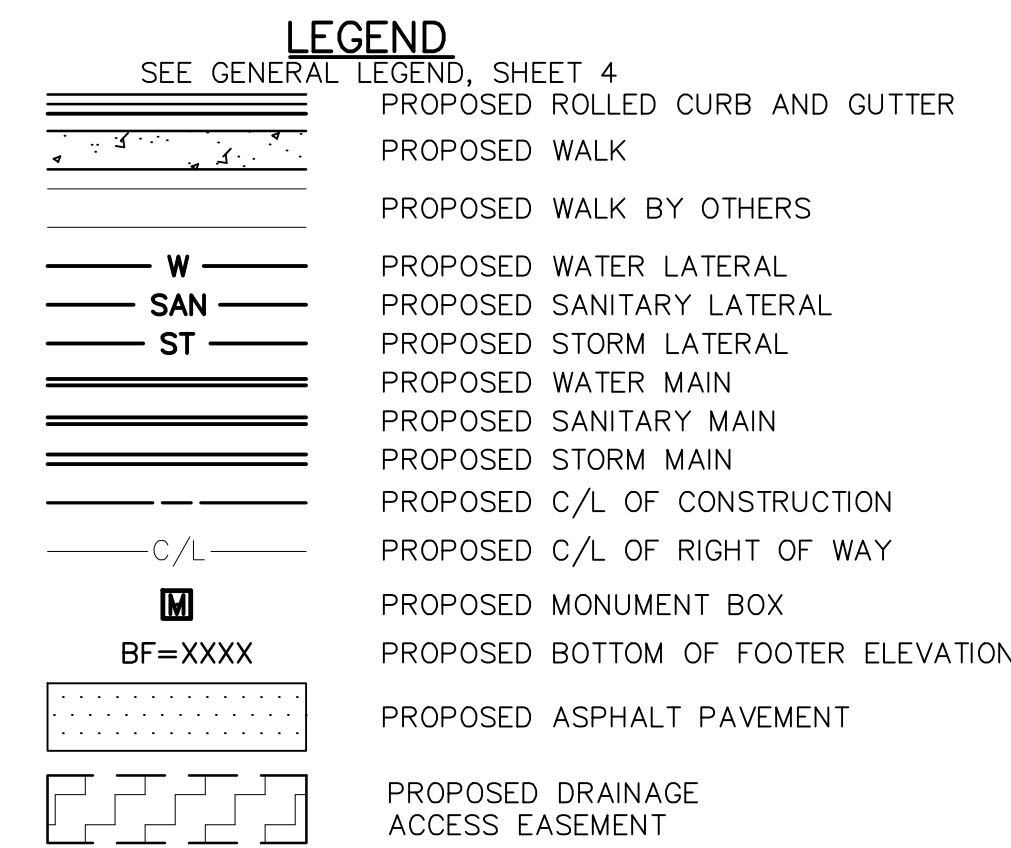
BRATTON DRIVE WATER MAIN FITTING SCHEDULE

ITEM	STATION	OFFSET
6" HYD. ASSEMBLY, TYPE B	1+29.32	38.21' RT.
8" WATER MAIN PLUG	1+31.82	69.98' LT.
8" LINE VALVE	1+31.82	50.50' LT.
8" x 8" TEE	1+31.82	47.50' LT.
8" LINE VALVE	1+31.82	43.02' RT.
8" WATER MAIN PLUG	1+31.82	62.50' RT.
1" TAP	1+69.91	47.12' LT.
IRRIGATION	1+69.91	7.50' LT.
8" LINE VALVE	3+13.53	57.05' LT.
6" HYD. ASSEMBLY, TYPE B	3+73.40	55.70' LT.
45° BEND	3+75.95	37.82' LT.
45° BEND	3+93.22	20.54' LT.

PROPOSED STRUCTURE TABLE

Structure Name	Structure Details
CB-AJ	ODOT CB No. 3A STA. 2+90.18-13.00 Rt. RIM = 1094.33 12" PVC INV (N)=1089.15 12" PVC INV (S)=1089.15
CB-AK	ODOT CB No. 3A STA. 2+90.18-32.53 Lt. RIM = 1093.82 12" PVC INV (S)=1089.61
CB-AS	ODOT CB 2-2B STA. 1+99.81-114.68 Lt. RIM = 1093.32 12" PVC INV (S)=1089.64

NOTE:
 ANY SERVICE LATERAL CROSSING WATER MAIN SHALL MAINTAIN 18" MINIMUM CLEARANCE.
 ALL WATER MAIN PIPE JOINTS WITHIN AREAS OF FILL MUST BE RESTRAINED.



BRATTON DRIVE MONUMENT BOX SCHEDULE

#	STATION	OFFSET
1	1+39.82	6.88' LT.
2	1+99.82	6.88' LT.
3	3+55.40	0.00'

STATION AND OFFSET TAKEN FROM CONSTRUCTION C/L

BRATTON DRIVE CONNECTION SCHEDULE

UNIT	CONNECTION AT MAIN	LATERAL TERMINATION	LENGTH
28	SAN 2+63.82, 17.00' RT.	2+63.82, 48.54' RT.	31.54
	ST 2+54.01, 29.35' RT.	2+55.83, 49.27' RT.	20.00
27	WAT 2+67.41, 52.83' LT.	2+76.57, 47.38' RT.	100.62
	SAN 3+46.92, 17.33' RT.	3+49.06, 40.75' RT.	23.50
26	ST 3+37.28, 21.75' RT.	3+39.10, 41.66' LT.	20.00
	WAT 3+20.05, 57.25' LT.	3+29.14, 42.57' RT.	100.00
29	SAN 3+96.72, 16.78' RT.	3+96.73, 40.00' RT.	23.22
	ST 3+91.74, 20.00' RT.	3+91.74, 40.00' RT.	20.00
29	WAT 4+06.75, 20.49' LT.	4+06.74, 40.00' RT.	60.49
	WAT 4+25.00, 20.82' LT.	4+25.00, 40.00' LT.	19.18

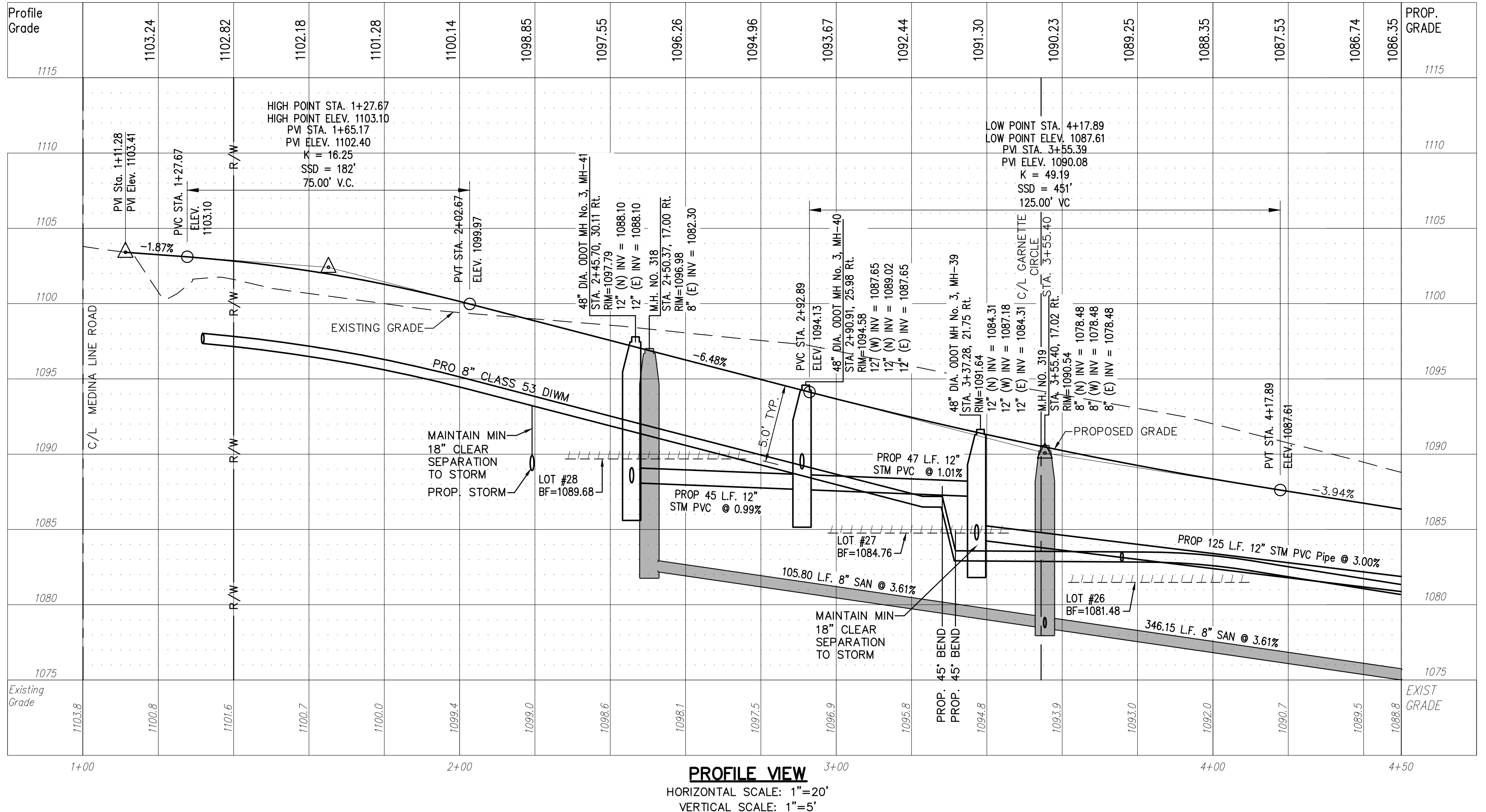
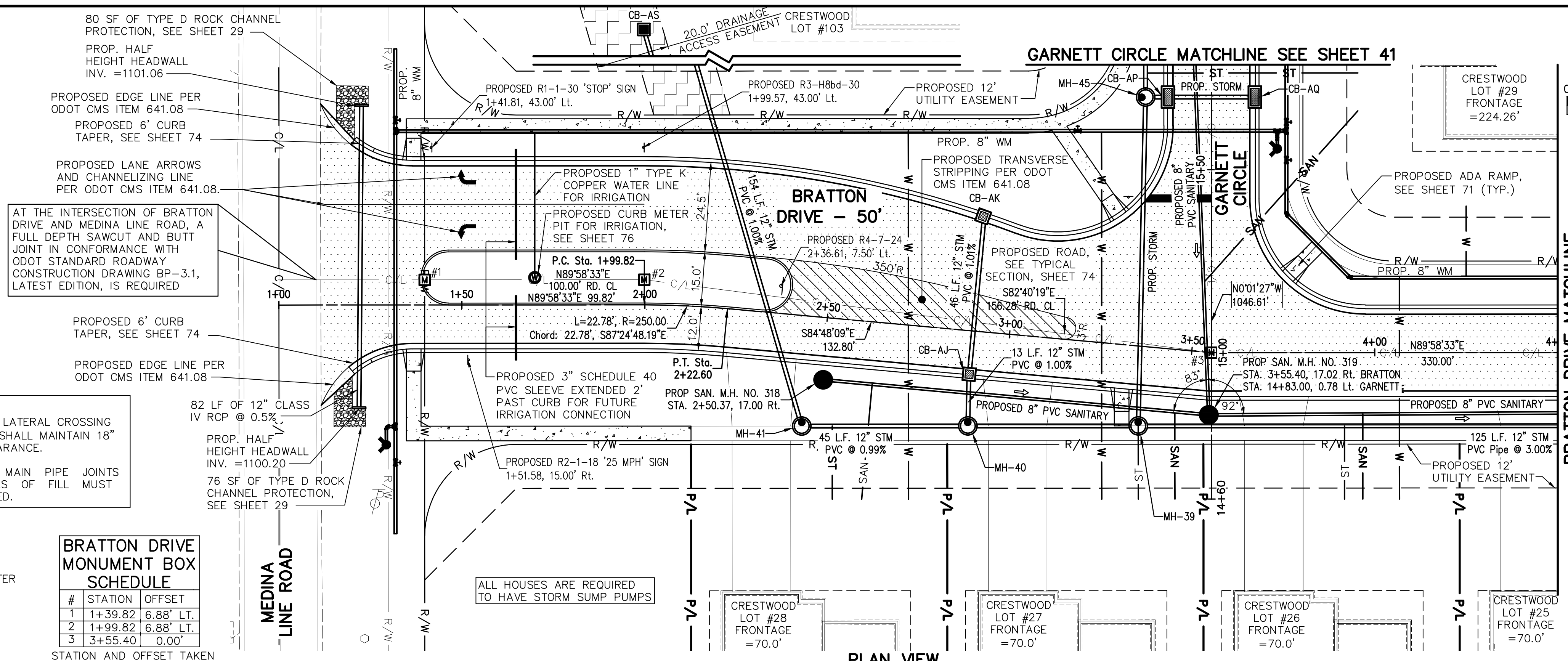
STORM SEWER
 REFER TO GENERAL NOTES SHEET 5 FOR GENERAL NOTES.
 ALL RCP PIPE SHALL BE CLASS 4 PER ODOT 706.02
 ALL HDPE PIPE SHALL BE SMOOTH LINED PER ODOT 707.33
 ALL PVC PIPE SHALL BE SDR 35 PER ODOT 707.45

Underground Utilities

2 Working Days Before You Dig
 Call 800-362-2764 (Toll Free)
 Ohio Utilities Protection Service

Non-members Must Be Called Directly
 Call 800-925-0988 (Toll Free)
 Oil & Gas Producers Utility Protection Service

NOTE:
 ALL OIL AND GAS WELL REMOVALS, PLUGGING/CAPPING, AND ABANDONMENTS SHALL BE IN ACCORDANCE WITH ALL ASSOCIATED REGULATIONS FOR SUCH REMOVALS, INCLUDING BUT NOT LIMITED TO, ODNR, LOCAL, STATE, AND FEDERAL.
 EXISTING HIGH PRESSURE GAS MAIN SHALL BE LOCATED AND PROTECTED PRIOR TO AND THROUGHOUT CONSTRUCTION.



REVISIONS

REV.	DATE	DESCRIPTION
1	06/02/14	REVISED PER LOCAL AGENCY COMMENTS
2	06/27/14	REVISED PER LOCAL AGENCY COMMENTS
3	07/18/14	REVISED PER LOCAL AGENCY COMMENTS
4	07/25/14	REVISED PER LOCAL AGENCY COMMENTS
5	08/01/14	MILLER PARCEL UTILITY UPDATE
6	08/05/14	COMMENTS FOR GRADING APPROVAL
7	08/20/14	REVISED PER LOCAL AGENCY COMMENTS
8	08/22/14	SANITARY REVISION MH 300-302
9	09/12/14	REVISED PER LOCAL AGENCY COMMENTS

THE PRESERVE AT MILLER'S FARM
 SE CORNER OF SR 18 AND MEDINA LINE RD
 COPLEY, OHIO 44321

PLAN AND PROFILE
BRATTON DRIVE

ISSUED FOR:

PERMIT	06-02-14
BID	06-02-14
CONSTRUCTION	09-16-14
RECORD	-

PROJECT MANAGER MAL **DESIGNER** KB

JOB NO.
2013258.00

38/81