

BRATTON DRIVE WATER MAIN FITTING SCHEDULE

ITEM	STATION	OFFSET
6" HYD. ASSEMBLY, TYPE B	1+29.22	38.21' RT.
8" WATER MAIN PLUG	1+31.82	69.98' LT.
8" LINE VALVE	1+31.82	50.50' LT.
8" x 8" TEE	1+31.82	47.50' LT.
8" LINE VALVE	1+31.82	43.02' RT.
8" WATER MAIN PLUG	1+31.82	62.50' RT.
1" TAP	1+69.91	47.12' LT.
IRRIGATION	1+69.91	7.50' LT.
8" LINE VALVE	3+13.53	57.05' LT.
6" HYD. ASSEMBLY, TYPE B	3+73.40	58.00' LT.
45° BEND	3+75.95	37.82' LT.
45° BEND	3+93.22	20.54' LT.

SEE SHEET 65 FOR CROSS SECTION

PROPOSED STRUCTURE TABLE

Structure Name	Structure Details
CB-AJ	ODOT CB No. 3A STA. 2+90.36, 2+90.36, 11.74' RT RIM = 1094.29 12" PVC INV (N) = 1089.16 12" PVC INV (S) = 1088.77
CB-AK	ODOT CB No. 3A STA. 2+90.36, 2+90.36, 11.74' RT RIM = 1093.77 12" PVC INV (N) = 1089.16 12" PVC INV (S) = 1089.61
CB-AS	ODOT CB 2-2B STA. 1+99.48, 1+99.48, 11.53' LT RIM = 1093.86 12" PVC INV (S) = 1091.27

NOTE:
 ALL WATER MAIN PIPE JOINTS
 WATER MAIN SHALL MAINTAIN 18"
 MINIMUM CLEARANCE.
 ALL WATER MAIN PIPE JOINTS
 LTR EAS OF FILL MUST
 BE RESTRAINED.

- LEGEND**
 SEE GENERAL LEGEND, SHEET 4
- PROPOSED ROLLED CURB AND GUTTER
 - PROPOSED WALK
 - PROPOSED WALK BY OTHERS
 - PROPOSED WATER LATERAL
 - PROPOSED SANITARY LATERAL
 - PROPOSED STORM LATERAL
 - PROPOSED WATER MAIN
 - PROPOSED SANITARY MAIN
 - PROPOSED STORM MAIN
 - PROPOSED C/L OF CONSTRUCTION
 - PROPOSED C/L OF RIGHT OF WAY
 - PROPOSED MONUMENT BOX
 - PROPOSED BOTTOM OF FOOTER ELEVATION
 - PROPOSED ASPHALT PAVEMENT
 - PROPOSED DRAINAGE ACCESS EASEMENT

BRATTON DRIVE MONUMENT BOX SCHEDULE

#	STATION	OFFSET
1	1+39.82	6.88' LT.
2	1+99.82	6.88' LT.
3	3+55.40	0.00'

STATION AND OFFSET TAKEN FROM CONSTRUCTION C/L

BRATTON DRIVE CONNECTION SCHEDULE

UNIT	CONNECTION AT MAIN	RISER HEIGHT	LATERAL TERMINATION	LENGTH
28	SAN 2+63.82, 17.00' RT.	3'	2+63.82, 48.54' RT.	31.54
28	ST 2+54.01, 29.35' RT.	-	2+55.83, 49.27' RT.	20.00
27	WAT 2+67.41, 52.83' LT.	-	2+76.57, 47.38' RT.	100.62
27	SAN 3+46.92, 17.33' RT.	-	3+49.06, 40.75' RT.	23.50
27	ST 3+37.28, 21.75' RT.	-	3+39.10, 41.66' LT.	20.00
27	WAT 3+20.03, 57.25' LT.	-	3+29.14, 42.57' RT.	100.00
26	SAN 3+96.72, 16.78' RT.	-	3+96.73, 40.00' RT.	23.22
26	ST 3+81.74, 20.00' RT.	-	3+91.74, 40.00' RT.	20.00
26	WAT 4+06.75, 20.49' LT.	-	4+06.74, 40.00' RT.	20.49
26	WAT 4+25.00, 20.82' LT.	-	4+25.00, 40.00' RT.	19.78

STORM SEWER
 REFER TO GENERAL NOTES SHEET 5 FOR GENERAL NOTES.
 ALL RCP PIPE SHALL BE CLASS 4 PER ODOT 706.02
 ALL HDPE PIPE SHALL BE SMOOTH LINED PER ODOT 707.33
 ALL PVC PIPE SHALL BE SDR 35 PER ODOT 707.45

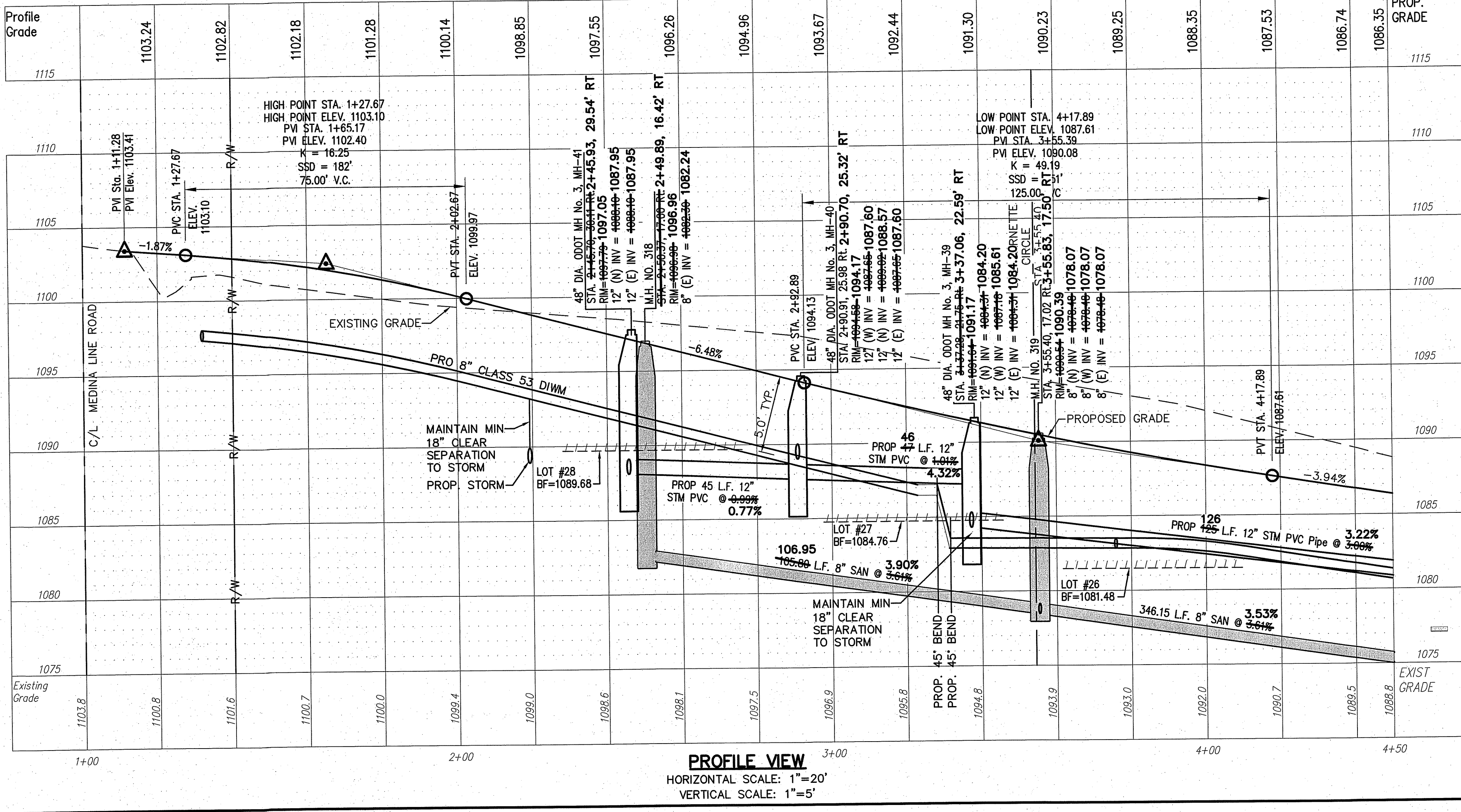
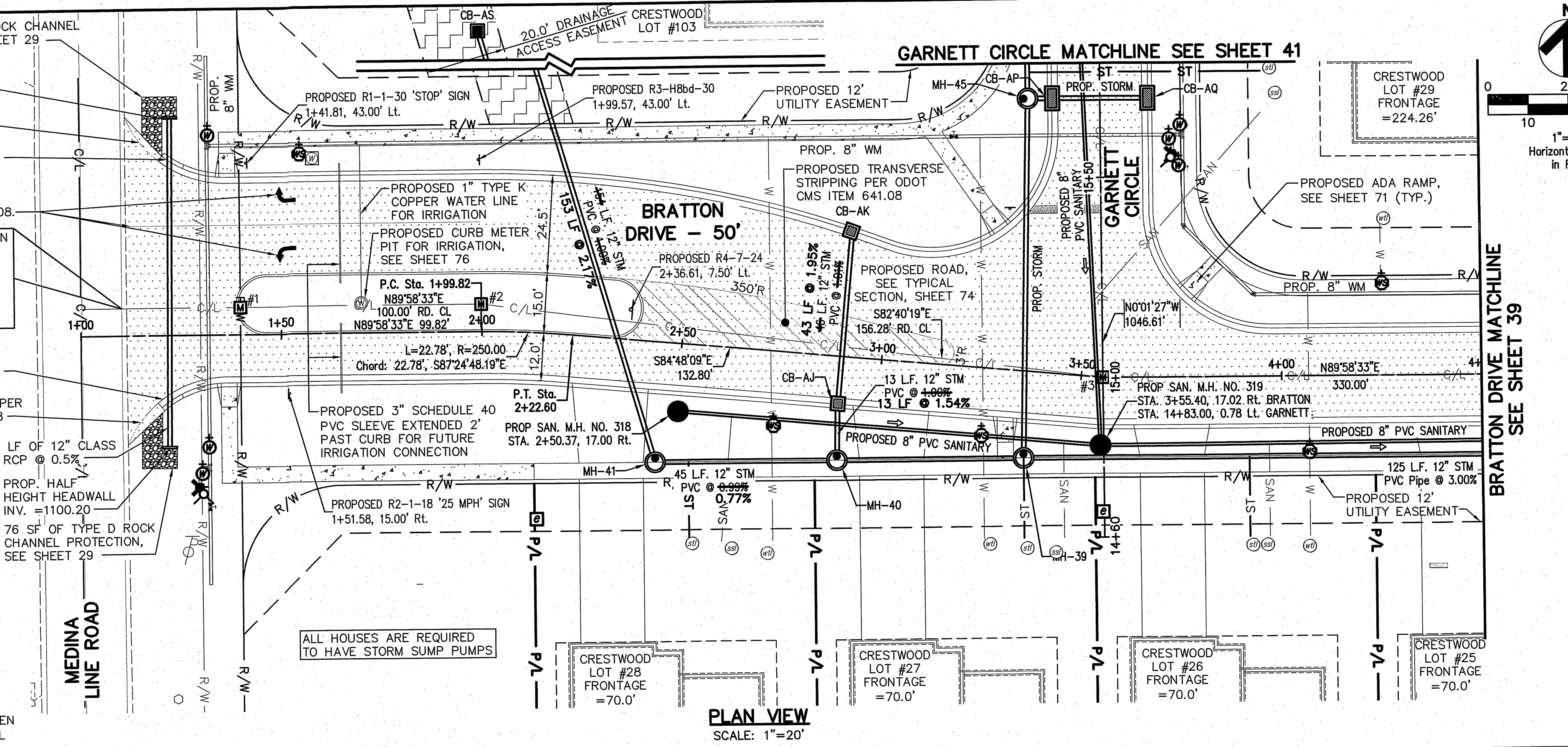
Underground Utilities

2 Working Days Before You Dig
 Call 800-362-2764 (Toll Free)
 Ohio Utilities Protection Service

Non-members Must Be Called Directly
 Call 800-925-0988 (Toll Free)
 Oil & Gas Producers Utility Protection Service

NOTE:
 ALL OIL AND GAS WELL REMOVALS, PLUGGING/CAPPING, AND ABANDONMENTS SHALL BE IN ACCORDANCE WITH ALL ASSOCIATED REGULATIONS FOR SUCH REMOVALS, INCLUDING BUT NOT LIMITED TO, ODNR, LOCAL, STATE, AND FEDERAL.
 EXISTING HIGH PRESSURE GAS MAIN SHALL BE LOCATED AND PROTECTED PRIOR TO AND THROUGHOUT CONSTRUCTION.

- AS-BUILT LEGEND**
- DESIGNED WATER VALVE
 - DESIGNED HYDRANT
 - AS-BUILT ELECTRIC PULLBOX
 - AS-BUILT WATER VALVE
 - AS-BUILT HYDRANT
 - STORM AS-BUILT LATERAL TERMINATION
 - SANITARY AS-BUILT LATERAL TERMINATION
 - WATER AS-BUILT LATERAL TERMINATION



DESCRIPTION

REV.	DATE	DESCRIPTION
1	12/8/14	BRIDGE PLAN REVISIONS

THE PRESERVE AT MILLER'S FARM
 SE CORNER OF SR 18 AND MEDINA LINE RD
 COPLEY, OHIO 44321

PLAN AND PROFILE
 BRATTON DRIVE

ISSUED FOR:

PERMIT	DATE
06-02-14	06-02-14
06-02-14	06-02-14
09-16-14	09-16-14
02-26-15	02-26-15

PROJECT MANAGER MAL **DESIGNER** KB

JOB NO.
2013258.00

38/81