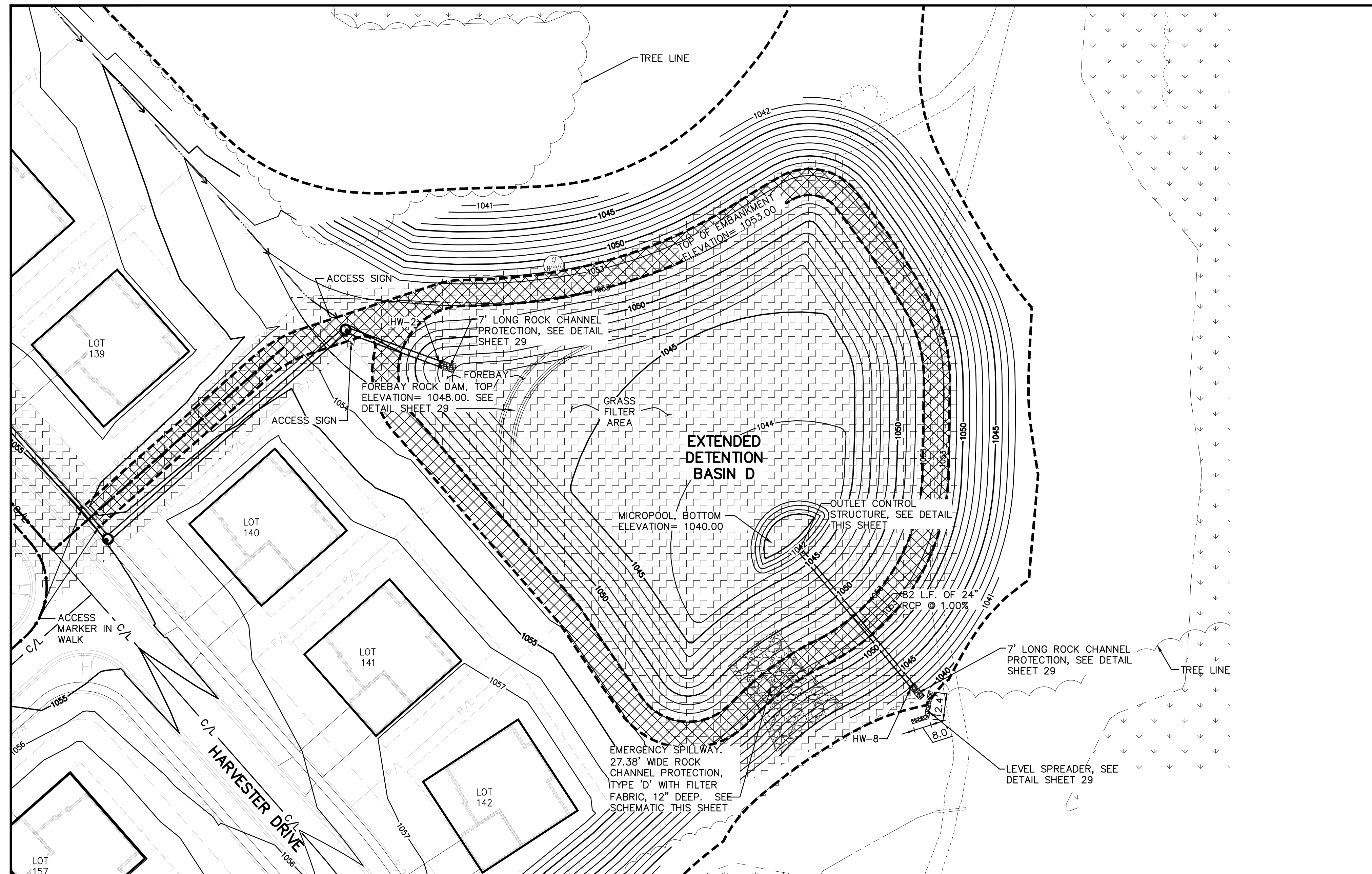


PROPOSED STRUCTURE TABLE	
NUMBER	STRUCTURE DATA
HW-2	HALF HEIGHT HEADWALL 30" HDPE PIPE INV (W)=1048.01
HW-8	HALF HEIGHT HEADWALL 24" HDPE PIPE INV (NW)=1042.00

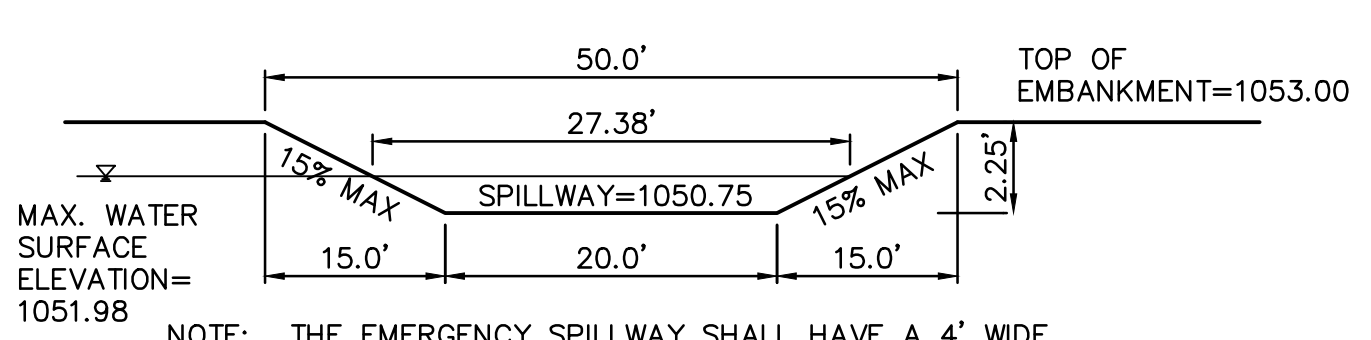
**LEGEND**  
(SEE GENERAL LEGEND, SHEET 4)

- EXISTING RIPARIAN SETBACK
- - - EXISTING CONTOURS
- PROPOSED CONTOURS
- [Hatched Box] PROPOSED DRAINAGE ACCESS EASEMENT
- [Cross-hatched Box] PROPOSED 12' ACCESS WAY



**EXTENDED DETENTION BASIN D**

10 YEAR HWE= 1049.07  
 100 YEAR HWE= 1050.61  
 WATER QUALITY VOLUME ELEVATION= 1045.25  
 WATER QUALITY VOLUME REQUIRED= 14,650 CUFT  
 WATER QUALITY VOLUME PROVIDED= 15,484 CUFT



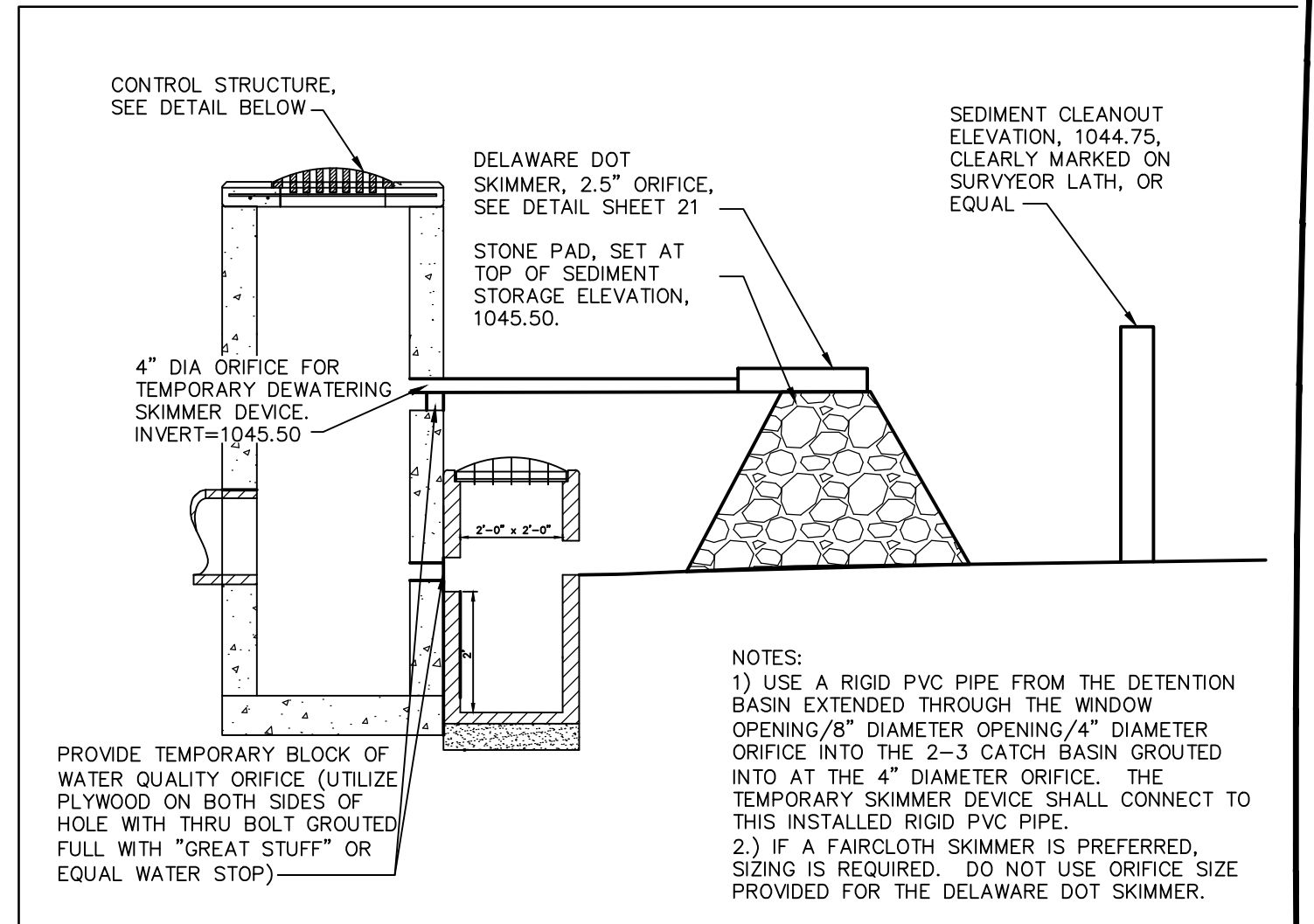
**EMERGENCY SPILLWAY**  
N.T.S.

NOTE: THE EMERGENCY SPILLWAY SHALL HAVE A 4' WIDE CONCRETE SECTION EQUAL TO THE 4" CONCRETE WALK ON DETAIL SHEET 74, WITH A MEDIUM BROOM FINISH CENTERED IN THE SPILLWAY ACROSS THE LENGTH BETWEEN MAXIMUM WATER SURFACE ELEVATIONS.

**Underground Utilities**

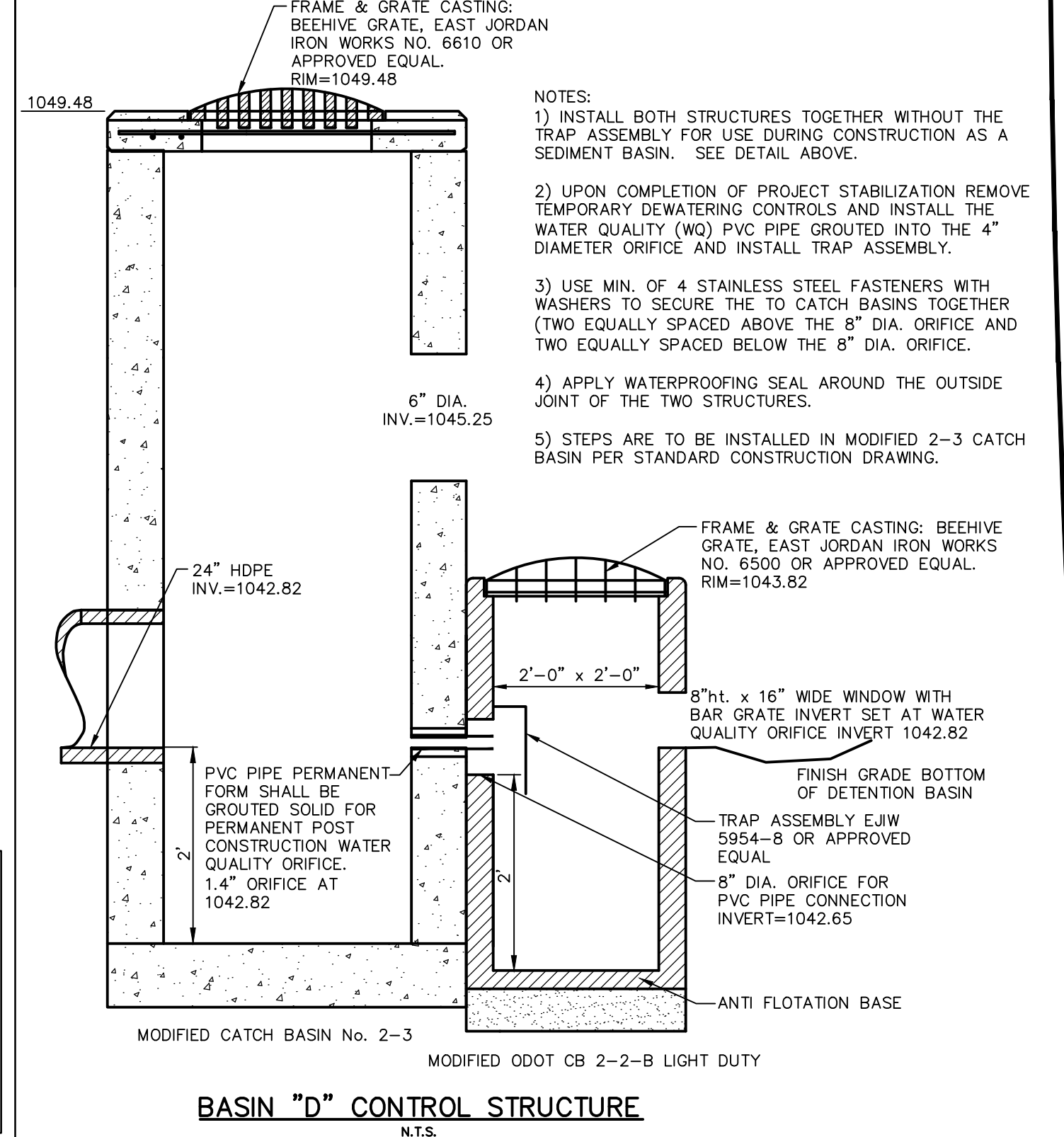
2 Working Days Before You Dig  
 Call 800-362-2764 (Toll Free)  
 Ohio Utilities Protection Service  
 Non-members Must Be Called Directly  
 Call 800-925-0988 (Toll Free)  
 Oil & Gas Producers Utility Protection Service

**NOTE:**  
 ALL OIL AND GAS WELL REMOVALS, PLUGGING/CAPPING, AND ABANDONMENTS SHALL BE IN ACCORDANCE WITH ALL ASSOCIATED REGULATIONS FOR SUCH REMOVALS, INCLUDING BUT NOT LIMITED TO, ODNR, LOCAL, STATE, AND FEDERAL.  
 EXISTING HIGH PRESSURE GAS MAIN SHALL BE LOCATED AND PROTECTED PRIOR TO AND THROUGHOUT CONSTRUCTION.



**SEDIMENT BASIN #3. TEMPORARY OUTLET**  
N.T.S.

NOTES:  
 1) USE A RIGID PVC PIPE FROM THE DETENTION BASIN EXTENDED THROUGH THE WINDOW OPENING/8" DIAMETER OPENING/4" DIAMETER ORIFICE INTO THE 2-3 CATCH BASIN GROUDED INTO AT THE 4" DIAMETER ORIFICE. THE TEMPORARY SKIMMER DEVICE SHALL CONNECT TO THIS INSTALLED RIGID PVC PIPE.  
 2) IF A FAIRCLOTH SKIMMER IS PREFERRED, SIZING IS REQUIRED. DO NOT USE ORIFICE SIZE PROVIDED FOR THE DELAWARE DOT SKIMMER.



**BASIN "D" CONTROL STRUCTURE**  
N.T.S.

REV.	DATE	DESCRIPTION
1	06/02/14	REVISED PER LOCAL AGENCY COMMENTS
2	06/27/14	REVISED PER LOCAL AGENCY COMMENTS
3	07/18/14	REVISED PER LOCAL AGENCY COMMENTS
4	07/25/14	REVISED PER LOCAL AGENCY COMMENTS
5	08/01/14	MILLER PARCEL UTILITY UPDATE
6	08/05/14	COMMENTS FOR GRADING APPROVAL
7	08/20/14	REVISED PER LOCAL AGENCY COMMENTS
8	08/22/14	SANITARY REVISION MH 300-302
9	09/12/14	REVISED PER LOCAL AGENCY COMMENTS

THE PRESERVE AT MILLER'S FARM  
 SE CORNER OF SR 18 AND MEDINA LINE RD  
 COPLEY, OHIO 44321

**EXTENDED  
 DETENTION BASIN D**

ISSUED FOR:

PERMIT	06-02-14
BID	06-02-14
CONSTRUCTION	09-16-14
RECORD	-

PROJECT MANAGER	DESIGNER
MAL	KB

JOB NO.  
**2013258.00**

**34/81**