

- LEGEND**  
 (SEE GENERAL LEGEND, SHEET 4)
- EXISTING RIPARIAN SETBACK
  - - - - - EXISTING CONTOURS
  - XXX--- PROPOSED CONTOURS
  - LIMITS OF DISTURBANCE
  - PHASE LINES
  - G=XXXX.XX GARAGE ELEVATION
  - F=XXXX.XX FINISHED FLOOR ELEVATION
  - PROPOSED SWALE
  - PROPOSED 100 YEAR FLOW PATH

**NOTE:**  
 EACH SUBLOT MUST ROUTE ALL STORMWATER DRAINAGE FROM A CONDUIT TO THE STORM SEWER LATERAL PROVIDED. NO OPEN DISCHARGES FROM A HOUSE CONDUIT ARE PERMITTED.

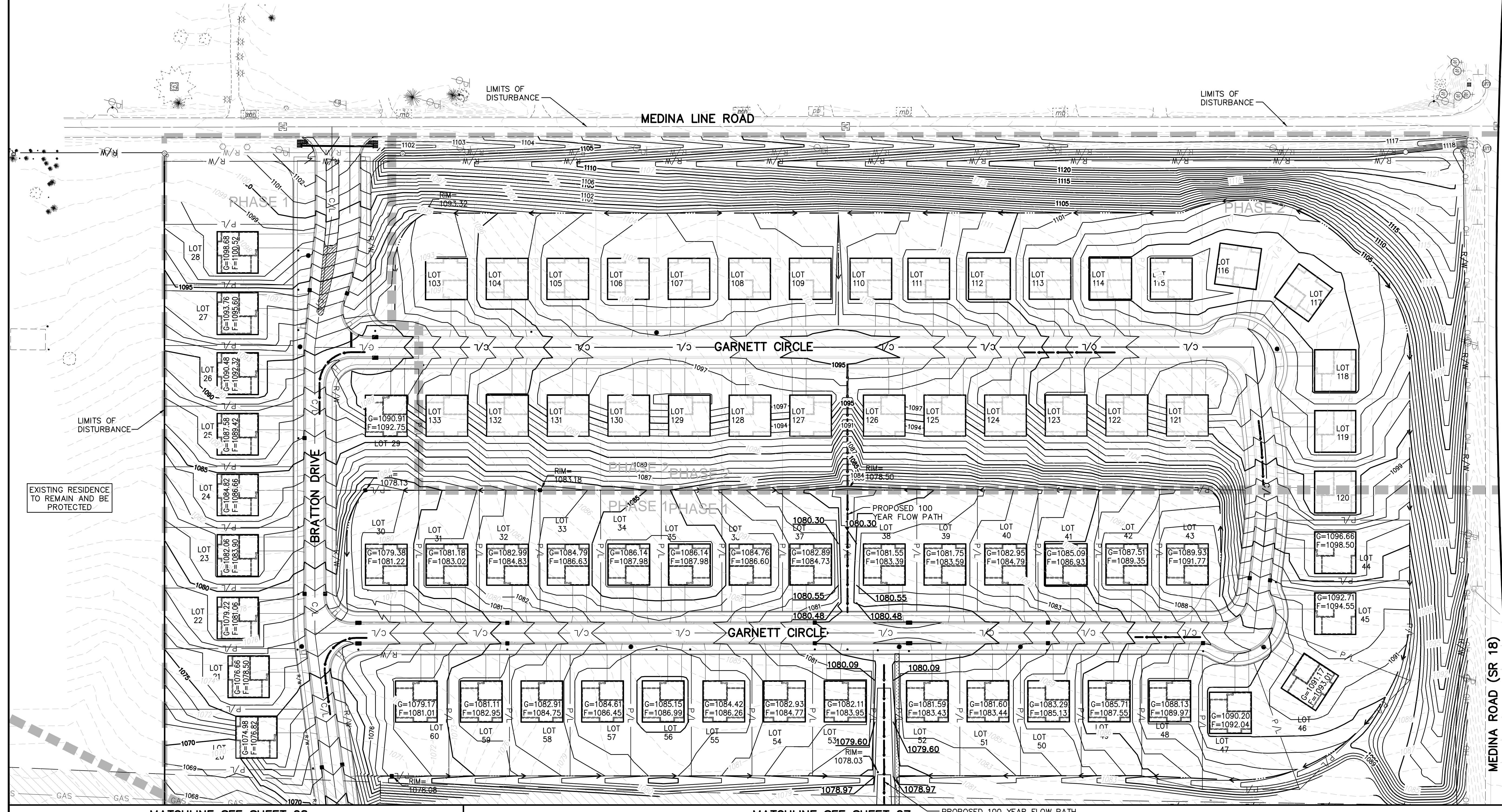
**Underground Utilities**

2 Working Days Before You Dig  
 Call 800-362-2764 (Toll Free)  
 Ohio Utilities Protection Service  
 Non-members Must Be Called Directly

Call 800-925-0988 (Toll Free)  
 Oil & Gas Producers Utility Protection Service

**NOTE:**  
 ALL OIL AND GAS WELL REMOVALS, PLUGGING/CAPPING, AND ABANDONMENTS SHALL BE IN ACCORDANCE WITH ALL ASSOCIATED REGULATIONS FOR SUCH REMOVALS, INCLUDING BUT NOT LIMITED TO, ODNR, LOCAL, STATE, AND FEDERAL.

EXISTING HIGH PRESSURE GAS MAIN SHALL BE LOCATED AND PROTECTED PRIOR TO AND THROUGHOUT CONSTRUCTION.



| REV. | DATE     | DESCRIPTION                       |
|------|----------|-----------------------------------|
| 1    | 06/02/14 | REVISED PER LOCAL AGENCY COMMENTS |
| 2    | 06/27/14 | REVISED PER LOCAL AGENCY COMMENTS |
| 3    | 07/18/14 | REVISED PER LOCAL AGENCY COMMENTS |
| 4    | 07/25/14 | REVISED PER LOCAL AGENCY COMMENTS |
| 5    | 08/01/14 | MILLER PARCEL UTILITY UPDATE      |
| 6    | 08/05/14 | COMMENTS FOR GRADING APPROVAL     |
| 7    | 08/20/14 | REVISED PER LOCAL AGENCY COMMENTS |
| 8    | 08/22/14 | SANITARY REVISION MH 300-302      |
| 9    | 09/12/14 | REVISED PER LOCAL AGENCY COMMENTS |

**FINAL**  
**GRADING PLAN WEST**  
 THE PRESERVE AT MILLER'S FARM  
 SE CORNER OF SR 18 AND MEDINA LINE RD  
 COPLEY, OHIO 44321

| ISSUED FOR:     |          |
|-----------------|----------|
| PERMIT          | 06-02-14 |
| BID             | 06-02-14 |
| CONSTRUCTION    | 09-16-14 |
| RECORD          | -        |
| PROJECT MANAGER | DESIGNER |
| MAL             | KB       |

JOB NO.  
**2013258.00**

**26/81**

MATCHLINE SEE SHEET 28

MATCHLINE SEE SHEET 27

PROPOSED 100 YEAR FLOW PATH, OVERFLOW #4, SEE SHEET 74