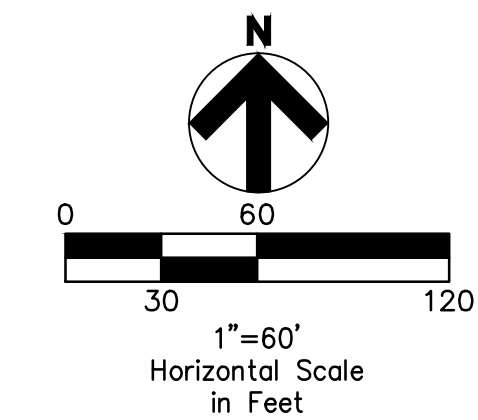


MATCHLINE SEE SHEET 12



- LEGEND**
(SEE GENERAL LEGEND, SHEET 4)
- - - - - EXISTING RIPARIAN SETBACK
 - - - - - PROPOSED SILT FENCE "ORANGE"
 - - - - - PROPOSED TREE PROTECTION
 - - - - - LIMITS OF DISTURBANCE
 - - - - - DIVERSION SWALE
 - - - - - LIMITS OF SOIL TYPE
 - WrB SOIL TYPE DESIGNATION
 - - - - - STAGE 2B HAUL ROUTE
 - INLET PROTECTION

LIMITS OF DISTURBANCE

- SWPP KEYNOTES**
- DS DIVERSION SWALE
 - IME INTERMEDIATE MASS EARTHWORK
 - IP INLET PROTECTION
 - RC ROCK CHECK DAM
 - SB SEDIMENT BASIN
 - SF SILT FENCE
 - ST STRIP TOPSOIL
 - TS TOPSOIL STOCKPILE
 - TSM RESPREAD TOPSOIL, SEED & MULCH
 - SD TEMPORARY SEEDING

Underground Utilities

2 Working Days Before You Dig
Call 800-362-2764 (Toll Free)
Ohio Utilities Protection Service

Non-members Must Be Called Directly
Call 800-925-0988 (Toll Free)
Oil & Gas Producers Utility Protection Service

NOTE:
ALL OIL AND GAS WELL REMOVALS, PLUGGING/CAPPING, AND ABANDONMENTS SHALL BE IN ACCORDANCE WITH ALL ASSOCIATED REGULATIONS FOR SUCH REMOVALS, INCLUDING BUT NOT LIMITED TO, ODNR, LOCAL, STATE, AND FEDERAL.

EXISTING HIGH PRESSURE GAS MAIN SHALL BE LOCATED AND PROTECTED PRIOR TO AND THROUGHOUT CONSTRUCTION.

REV.	DATE	DESCRIPTION
1	06/02/14	REVISED PER LOCAL AGENCY COMMENTS
2	06/27/14	REVISED PER LOCAL AGENCY COMMENTS
3	07/18/14	REVISED PER LOCAL AGENCY COMMENTS
4	07/25/14	REVISED PER LOCAL AGENCY COMMENTS
5	08/01/14	MILLER PARCEL UTILITY UPDATE
6	08/05/14	COMMENTS FOR GRADING APPROVAL
7	08/20/14	REVISED PER LOCAL AGENCY COMMENTS
8	08/22/14	SANITARY REVISION MH 300-302
9	09/12/14	REVISED PER LOCAL AGENCY COMMENTS

THE PRESERVE AT MILLER'S FARM
SE CORNER OF SR 18 AND MEDINA LINE RD
COPLEY, OHIO 44321

SWPP STAGE 2B
INTERMEDIATE PLAN

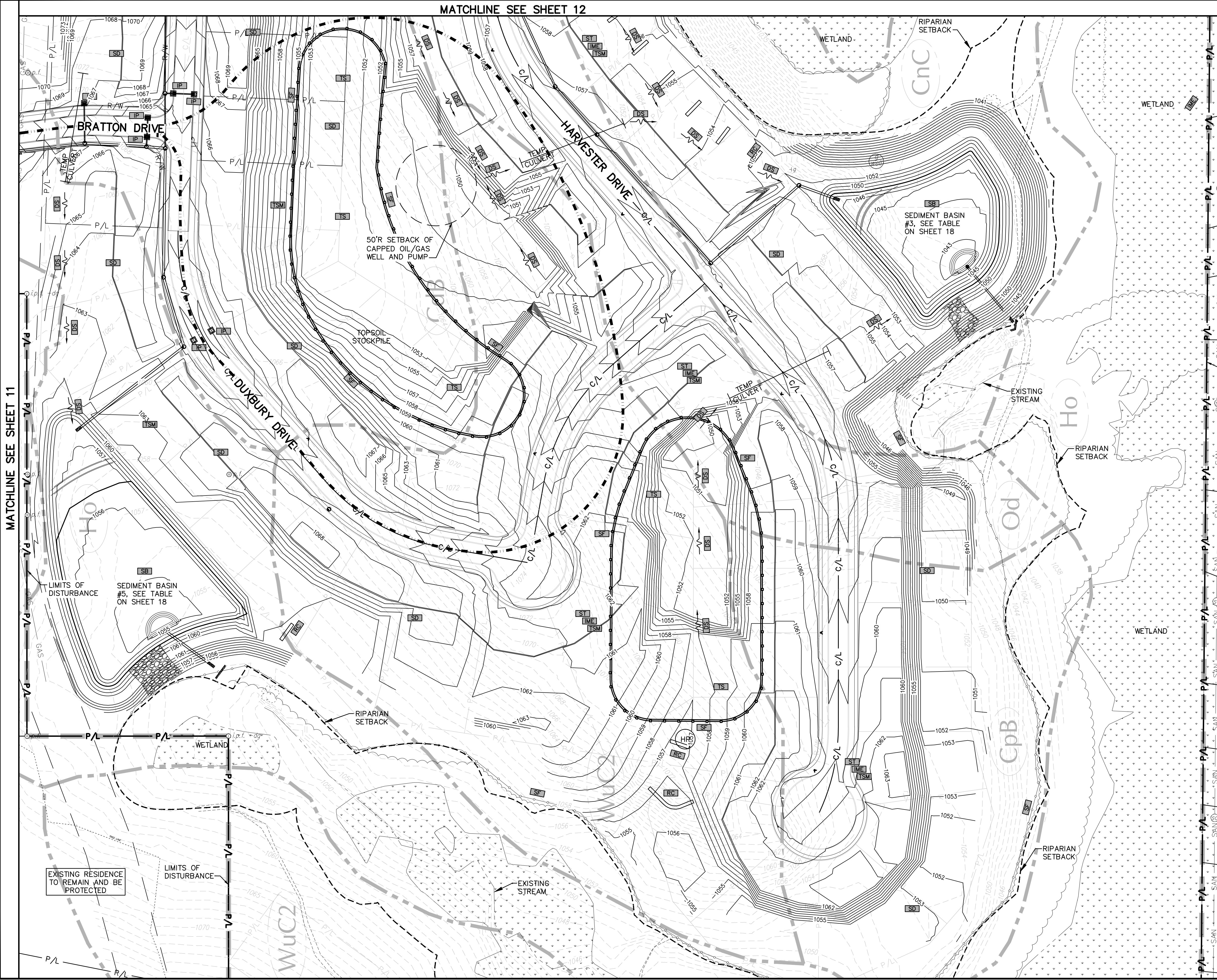
ISSUED FOR:

PERMIT	06-02-14
BID	06-02-14
CONSTRUCTION	09-16-14
RECORD	-

PROJECT MANAGER	DESIGNER
MAL	KB

JOB NO.
2013258.00

16/81



Drawing Name: C:\2013\2013258\00\DWG\Construction Documents\201325800 SWPP Plan And Details.dwg
September 16, 2014 2:28 PM - mcdaratt