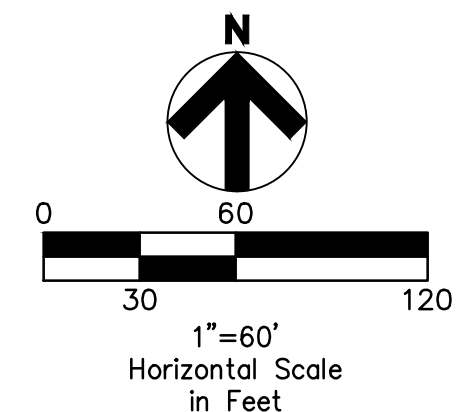
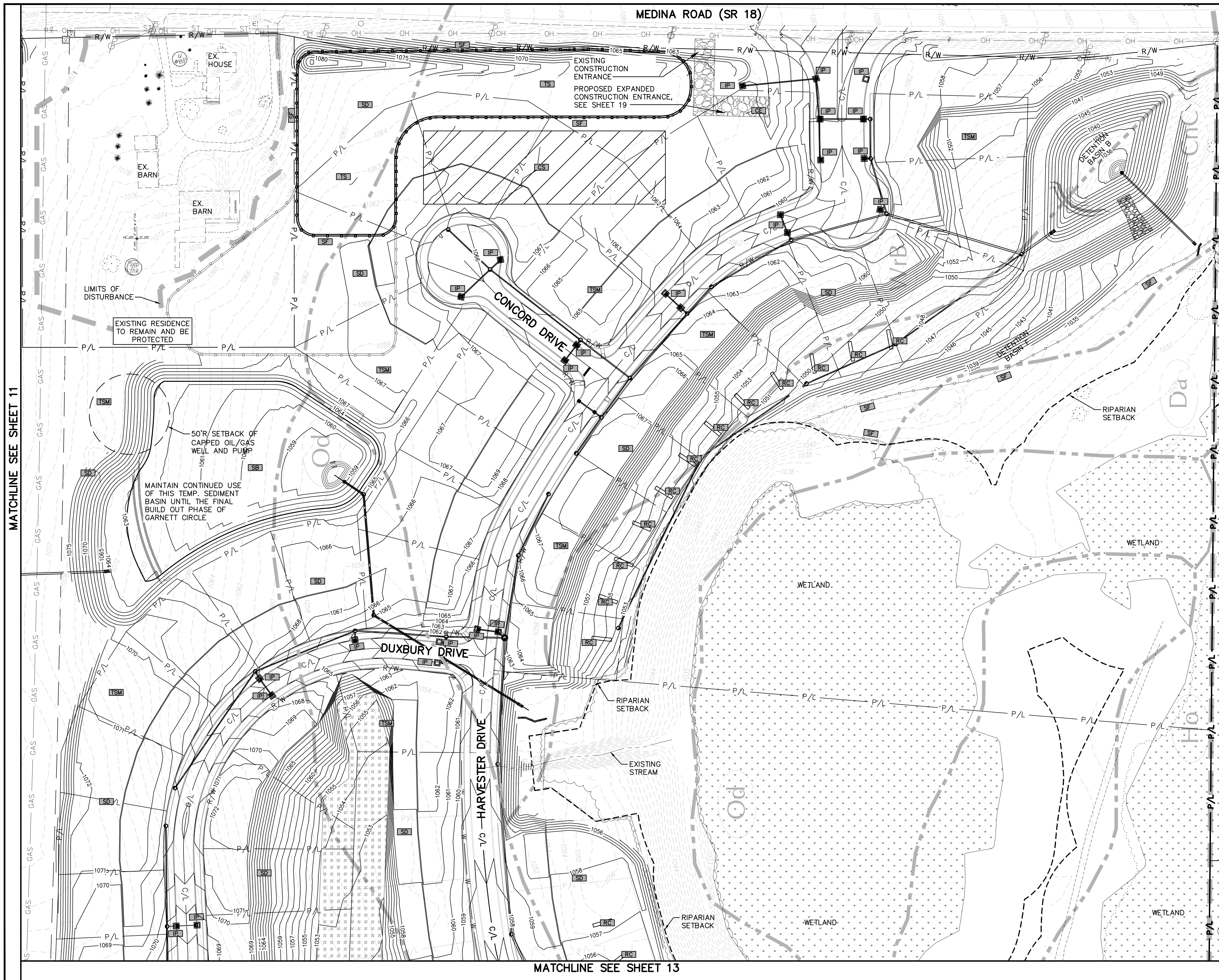


MATCHLINE SEE SHEET 11

MATCHLINE SEE SHEET 13



LEGEND

- (SEE GENERAL LEGEND, SHEET 4)
- - - - - EXISTING RIPARIAN SETBACK
 - - - - - PROPOSED SILT FENCE "ORANGE"
 - - - - - PROPOSED TREE PROTECTION
 - - - - - LIMITS OF DISTURBANCE
 - - - - - LIMITS OF SOIL TYPE
 - W/B SOIL TYPE DESIGNATION
 - [Hatched Box] CONSTRUCTION STAGING
 - [Square with X] INLET PROTECTION

LIMITS OF DISTURBANCE

SWPP KEYNOTES

- [CE] TEMPORARY CONSTRUCTION ENTRANCE
- [CS] CONSTRUCTION STAGING AREA
- [IP] INLET PROTECTION
- [RC] ROCK CHECK DAM
- [SB] SEDIMENT BASIN
- [SF] SILT FENCE
- [TS] TOPSOIL STOCKPILE
- [TSM] RESPREAD TOPSOIL, SEED AND MULCH
- [SD] TEMPORARY SEEDING

Underground Utilities

2 Working Days Before You Dig
 Call 800-362-2764 (Toll Free)
 Ohio Utilities Protection Service

Non-members Must Be Called Directly
 Call 800-925-0988 (Toll Free)
 Oil & Gas Producers Utility Protection Service

NOTE:
 ALL OIL AND GAS WELL REMOVALS, PLUGGING/CAPPING, AND ABANDONMENTS SHALL BE IN ACCORDANCE WITH ALL ASSOCIATED REGULATIONS FOR SUCH REMOVALS, INCLUDING BUT NOT LIMITED TO, ODNR, LOCAL, STATE, AND FEDERAL.
 EXISTING HIGH PRESSURE GAS MAIN SHALL BE LOCATED AND PROTECTED PRIOR TO AND THROUGHOUT CONSTRUCTION.

REV.	DATE	DESCRIPTION
1	06/02/14	REVISED PER LOCAL AGENCY COMMENTS
2	06/27/14	REVISED PER LOCAL AGENCY COMMENTS
3	07/18/14	REVISED PER LOCAL AGENCY COMMENTS
4	07/25/14	REVISED PER LOCAL AGENCY COMMENTS
5	08/01/14	MILLER PARCEL UTILITY UPDATE
6	08/05/14	COMMENTS FOR GRADING APPROVAL
7	08/20/14	REVISED PER LOCAL AGENCY COMMENTS
8	08/22/14	SANITARY REVISION MH 300-302
9	09/12/14	REVISED PER LOCAL AGENCY COMMENTS

THE PRESERVE AT MILLER'S FARM
 SE CORNER OF SR 18 AND MEDINA LINE RD
 COPLEY, OHIO 44321

**SWPP STAGE 2B
 INTERMEDIATE PLAN**

ISSUED FOR:

PERMIT	06-02-14
BID	06-02-14
CONSTRUCTION	09-16-14
RECORD	-

PROJECT MANAGER	DESIGNER
MAL	KB

JOB NO.
2013258.00

15/81