

Underground Utilities

2 Working Days Before You Dig
Call 800-362-2764 (Toll Free)
Ohio Utilities Protection Service

Non-members Must Be Called Directly
Call 800-925-0988 (Toll Free)
Oil & Gas Producers Utility Protection Service

NOTE:
ALL OIL AND GAS WELL REMOVALS, PLUGGING/CAPPING, AND ABANDONMENTS SHALL BE IN ACCORDANCE WITH ALL ASSOCIATED REGULATIONS FOR SUCH REMOVALS, INCLUDING BUT NOT LIMITED TO, ODNR, LOCAL, STATE, AND FEDERAL.

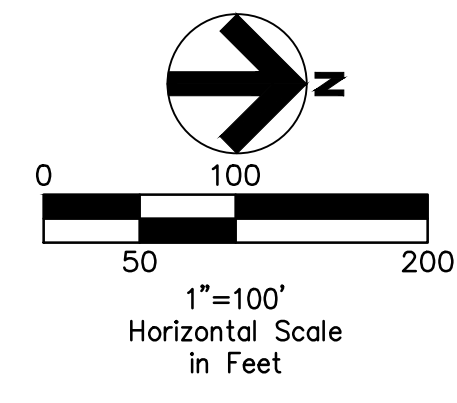
EXISTING HIGH PRESSURE GAS MAIN SHALL BE LOCATED AND PROTECTED PRIOR TO AND THROUGHOUT CONSTRUCTION.

LEGEND
(SEE GENERAL LEGEND, SHEET 4)

- EXISTING RIPARIAN SETBACK
- PROPOSED SILT FENCE "ORANGE"
- PROPOSED TREE PROTECTION AND ORANGE SILT FENCE
- LIMITS OF DISTURBANCE
- EXISTING TREE LIMITS TO BE REMOVED
- EXISTING TREE REMOVED
- LIMITS OF SOIL TYPE
- SOIL TYPE DESIGNATION

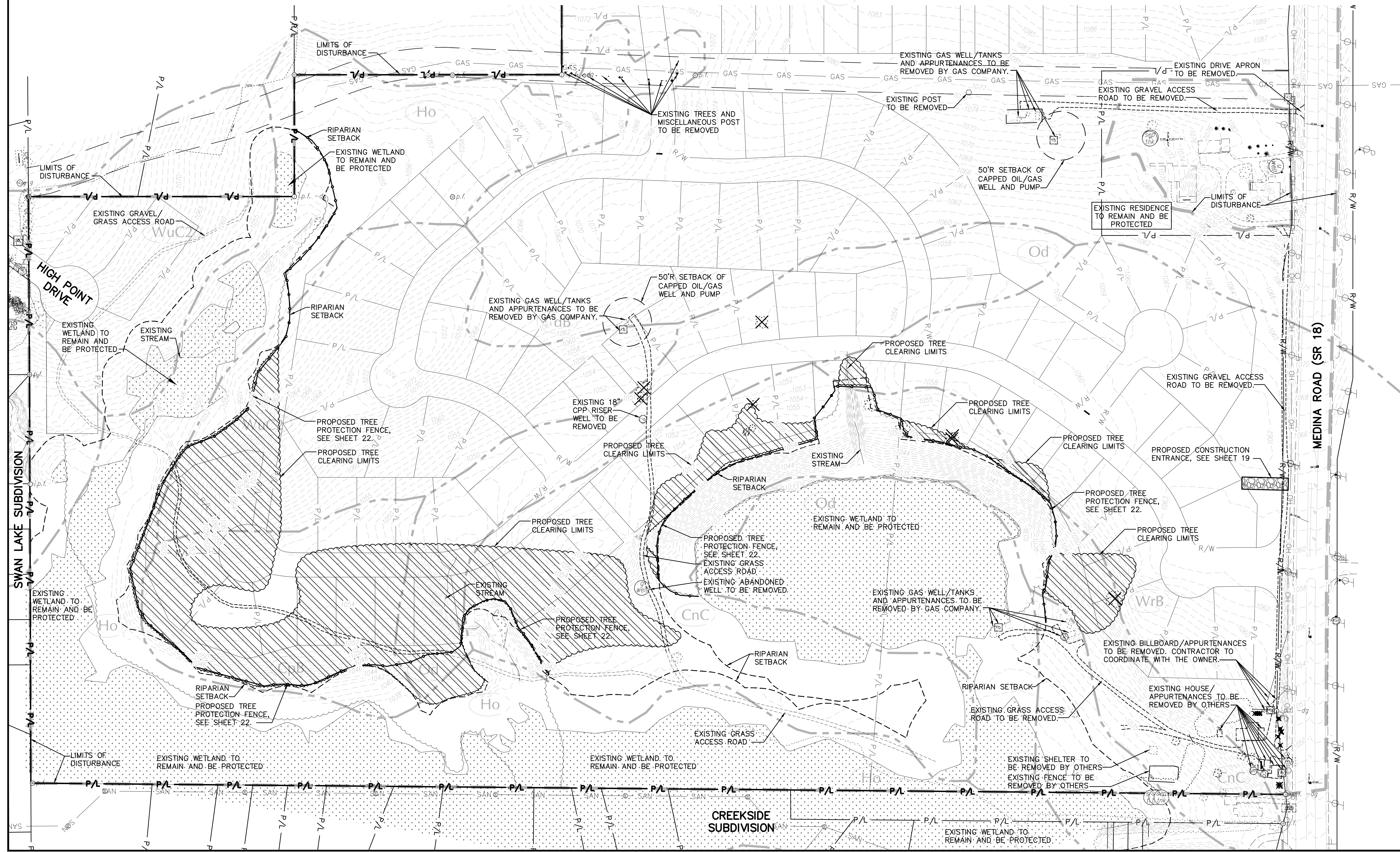
SWPP STAGE 1 SEQUENCE

- INSTALL TEMPORARY CONSTRUCTION ENTRANCE.
- INSTALL TREE PROTECTION/ORANGE SILT FENCE ALONG EAST AND SOUTH PERIMETER OF TREE CLEARING LIMITS.
- COORDINATE SITE ACCESS FOR SITE DEMOLITION AND OIL/GAS WELL CAPPING BY OTHERS. MAINTAIN CONSTRUCTION ENTRANCE.
- REFER TO SWPP-STAGE 2A.



GPD GROUP
Glaus, Pyle, Schomer, Burns & DeHaven, Inc.

520 South Main Street, Suite 2531
Akron, Ohio 44311
330.572.2100 Fax 330.572.2101
Copyright: Glaus, Pyle, Schomer, Burns & DeHaven, Inc. 2014



REV.	DATE	DESCRIPTION
1	06/02/14	REVISED PER LOCAL AGENCY COMMENTS
2	06/27/14	REVISED PER LOCAL AGENCY COMMENTS
3	07/18/14	REVISED PER LOCAL AGENCY COMMENTS
4	07/25/14	REVISED PER LOCAL AGENCY COMMENTS
5	08/01/14	MILLER PARCEL UTILITY UPDATE
6	08/05/14	COMMENTS FOR GRADING APPROVAL
7	08/20/14	REVISED PER LOCAL AGENCY COMMENTS
8	08/22/14	SANITARY REVISION MH 300-302
9	09/12/14	REVISED PER LOCAL AGENCY COMMENTS

THE PRESERVE AT MILLER'S FARM
SE CORNER OF SR 18 AND MEDINA LINE RD
COPLEY, OHIO 44321

**SWPP STAGE 1
TREE CLEARING AND
DEMOLITION PLAN**

ISSUED FOR:

PERMIT	06-02-14
BID	06-02-14
CONSTRUCTION	09-16-14
RECORD	-

PROJECT MANAGER	DESIGNER
MAL	KB

JOB NO.
2013258.00

10/81

Drawing Name: C:\2013\2013258\00\DWG\Construction Documents\201325800 SWPP Plan And Details.dwg
September 16, 2014 2:28 PM - mcfarant