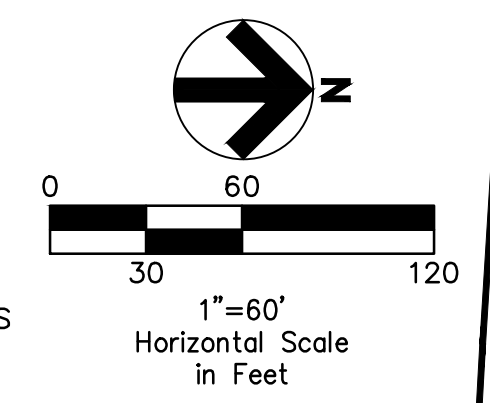
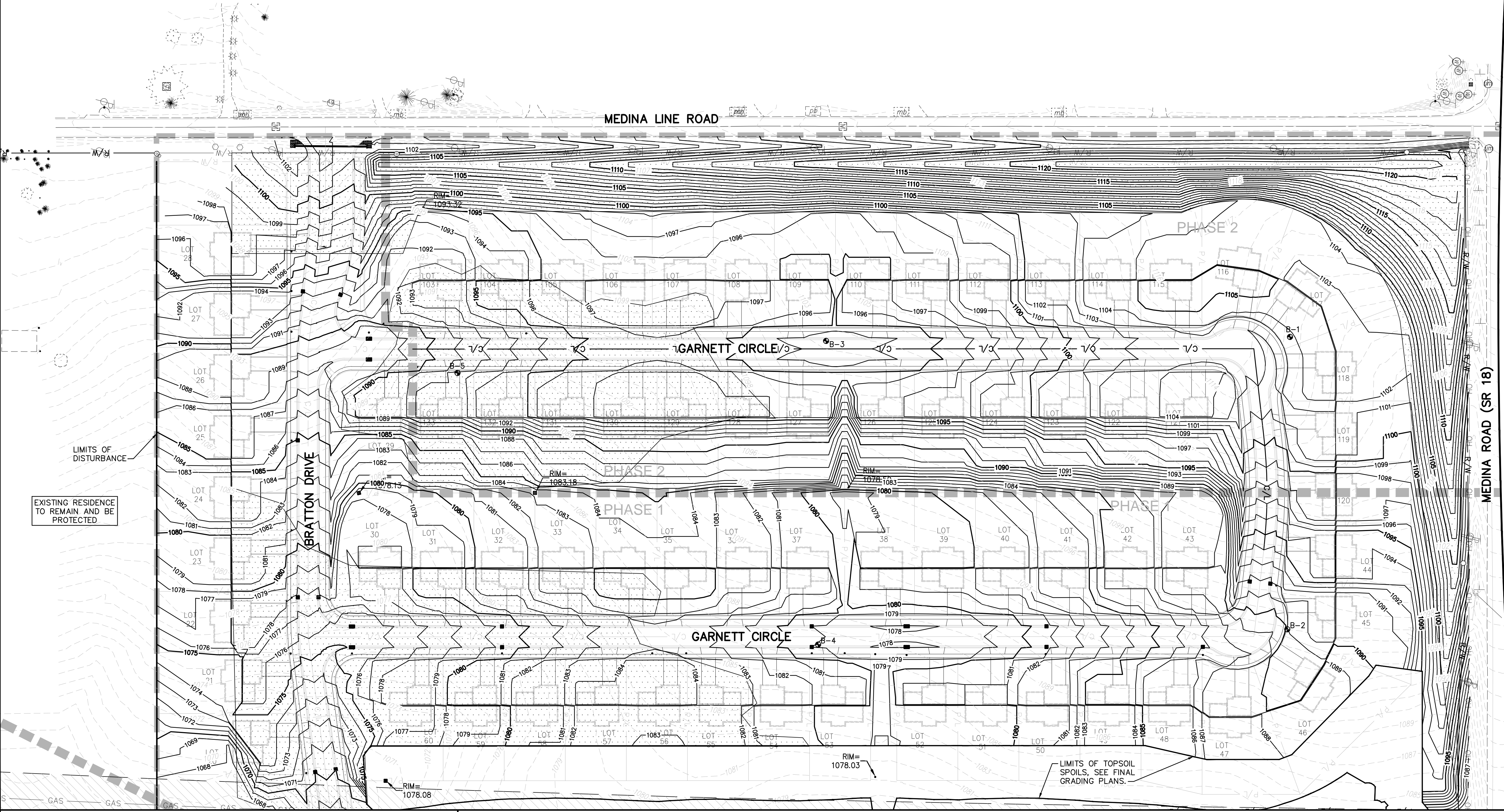


**Underground Utilities**  
 2 Working Days  
 Before You Dig  
 Call 800-362-2764 (Toll Free)  
 Ohio Utilities Protection Service  
 Non-members  
 Must Be Called Directly  
 Call 800-925-0988 (Toll Free)  
 Oil & Gas Producers Utility Protection Service

**LEGEND**  
 (SEE GENERAL LEGEND, SHEET 4)  
 ---XXX--- EXISTING CONTOURS  
 --- LIMITS OF DISTURBANCE  
 --- PHASE LINES  
 ---XXX--- PROPOSED INTERMEDIATE CONTOURS  
 [Stippled Area] LIMITS OF SUBSOIL FILL



**NOTE:**  
 ALL OIL AND GAS WELL REMOVALS, PLUGGING/CAPPING, AND ABANDONMENTS SHALL BE IN ACCORDANCE WITH ALL ASSOCIATED REGULATIONS FOR SUCH REMOVALS, INCLUDING BUT NOT LIMITED TO, ODNR, LOCAL, STATE, AND FEDERAL.  
 EXISTING HIGH PRESSURE GAS MAIN SHALL BE LOCATED AND PROTECTED PRIOR TO AND THROUGHOUT CONSTRUCTION.



REV.	DATE	DESCRIPTION
1	06/02/14	REVISED PER LOCAL AGENCY COMMENTS
2	06/27/14	REVISED PER LOCAL AGENCY COMMENTS
3	07/18/14	REVISED PER LOCAL AGENCY COMMENTS
4	07/25/14	REVISED PER LOCAL AGENCY COMMENTS
5	08/01/14	MILLER PARCEL UTILITY UPDATE
6	08/05/14	COMMENTS FOR GRADING APPROVAL
7	08/20/14	REVISED PER LOCAL AGENCY COMMENTS
8	08/22/14	SANITARY REVISION MH 300-302
9	09/12/14	REVISED PER LOCAL AGENCY COMMENTS

THE PRESERVE AT MILLER'S FARM  
 SE CORNER OF SR 18 AND MEDINA LINE RD  
 COPLEY, OHIO 44321

**INTERMEDIATE  
 GRADING PLAN WEST**

ISSUED FOR:	
PERMIT	06-02-14
BID	06-02-14
CONSTRUCTION	09-16-14
RECORD	-
PROJECT MANAGER	DESIGNER
MAL	KB

JOB NO.  
**2013258.00**

**7/81**

Drawing Name: C:\2013\2013258\00\DWG\Construction Documents\201325800 Overall And Grading Plans.dwg  
 September 16, 2014 1:48 PM - mcfarant

MATCHLINE SEE SHEET 9

MATCHLINE SEE SHEET 8