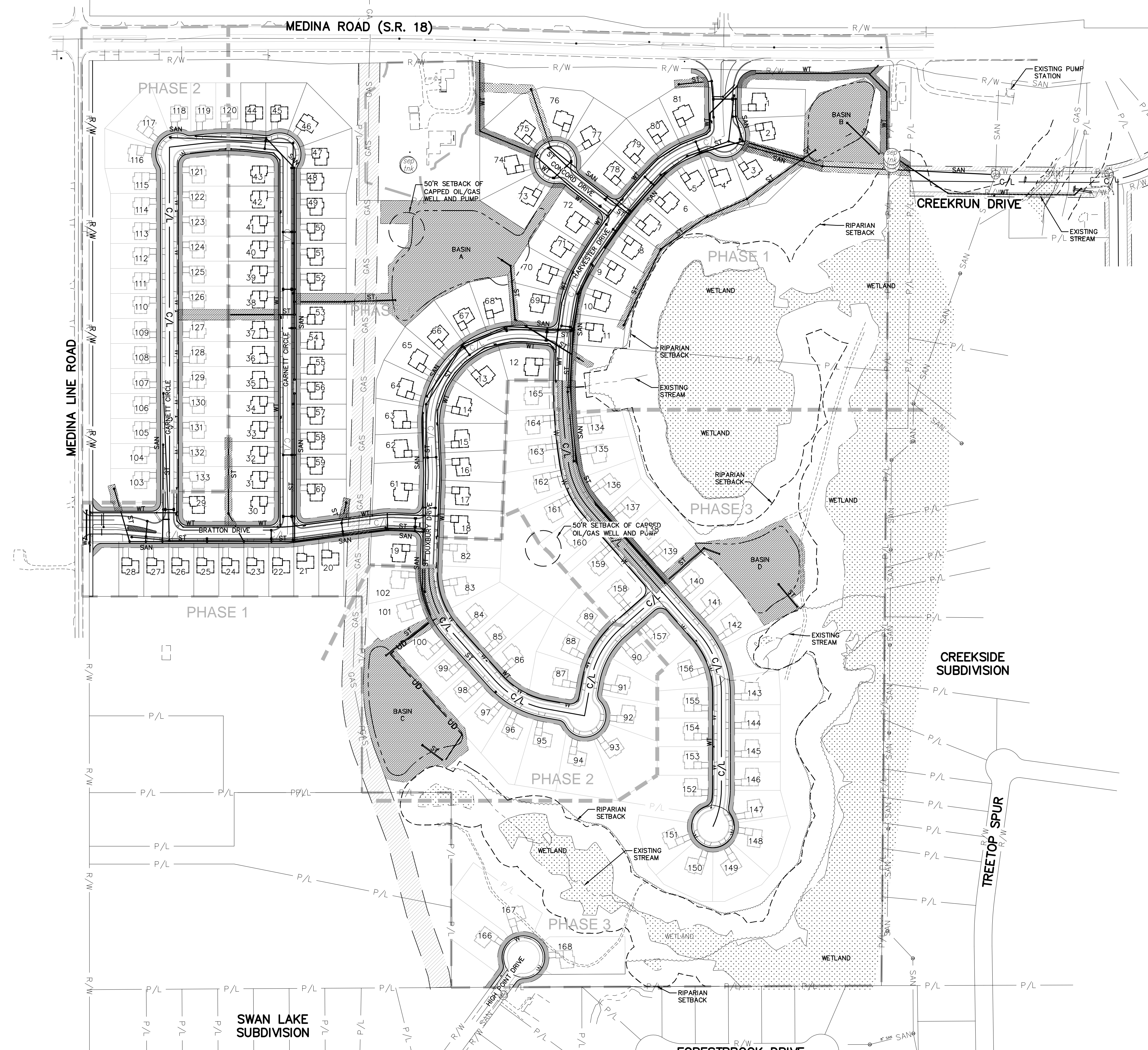
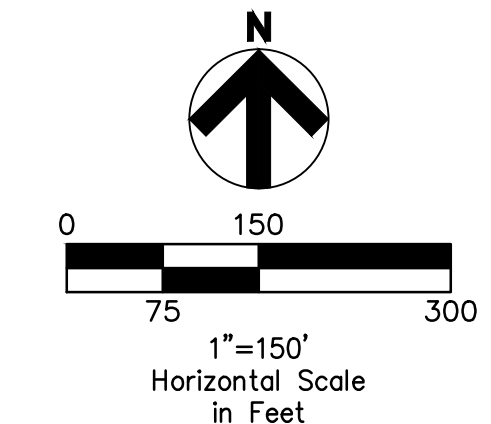


Drawing Name: C:\2013\2013258\00\DWG\Construction Documents\201325800 Overall And Grading Plans.dwg
 September 16, 2014 1:43 PM - mcdaratt



- LEGEND**
 (SEE GENERAL LEGEND, SHEET 4)
- EXISTING RIPARIAN SETBACK
 - - - PROPOSED UTILITY EASEMENT
 - - - PROPOSED BASIN LIMITS
 - PHASE LINES
 - WT PROPOSED WATER LINE
 - ST PROPOSED STORM LINE
 - SAN PROPOSED SANITARY LINE
 - PROPOSED 12' UTILITY EASEMENT
 - PROPOSED SANITARY ACCESS EASEMENT
 - PROPOSED WATER EASEMENT
 - PROPOSED DRAINAGE ACCESS EASEMENT

REV.	DATE	DESCRIPTION
1	06/02/14	REVISED PER LOCAL AGENCY COMMENTS
2	06/27/14	REVISED PER LOCAL AGENCY COMMENTS
3	07/18/14	REVISED PER LOCAL AGENCY COMMENTS
4	07/25/14	REVISED PER LOCAL AGENCY COMMENTS
5	08/01/14	MILLER PARCEL UTILITY UPDATE
6	08/05/14	COMMENTS FOR GRADING APPROVAL
7	08/20/14	REVISED PER LOCAL AGENCY COMMENTS
8	08/22/14	SANITARY REVISION MH 300-302
9	09/12/14	REVISED PER LOCAL AGENCY COMMENTS

THE PRESERVE AT MILLER'S FARM
 SE CORNER OF SR 18 AND MEDINA LINE RD
 COPLEY, OHIO 44321

**OVERALL
 UTILITY PLAN**

Underground Utilities

2 Working Days
 Before You Dig
 Call 800-362-2764 (Toll Free)
 Ohio Utilities Protection Service

Non-members
 Must Be Called Directly

Call 800-925-0988 (Toll Free)
 Oil & Gas Producers Utility Protection Service

ISSUED FOR:

PERMIT	06-02-14
BID	06-02-14
CONSTRUCTION	09-16-14
RECORD	-

PROJECT MANAGER	DESIGNER
MAL	KB

JOB NO.
2013258.00

3/81

NOTE:
 ALL OIL AND GAS WELL REMOVALS, PLUGGING/CAPPING, AND ABANDONMENTS SHALL BE IN ACCORDANCE WITH ALL ASSOCIATED REGULATIONS FOR SUCH REMOVALS, INCLUDING BUT NOT LIMITED TO, ODNR, LOCAL, STATE, AND FEDERAL.
 EXISTING HIGH PRESSURE GAS MAIN SHALL BE LOCATED AND PROTECTED PRIOR TO AND THROUGHOUT CONSTRUCTION.