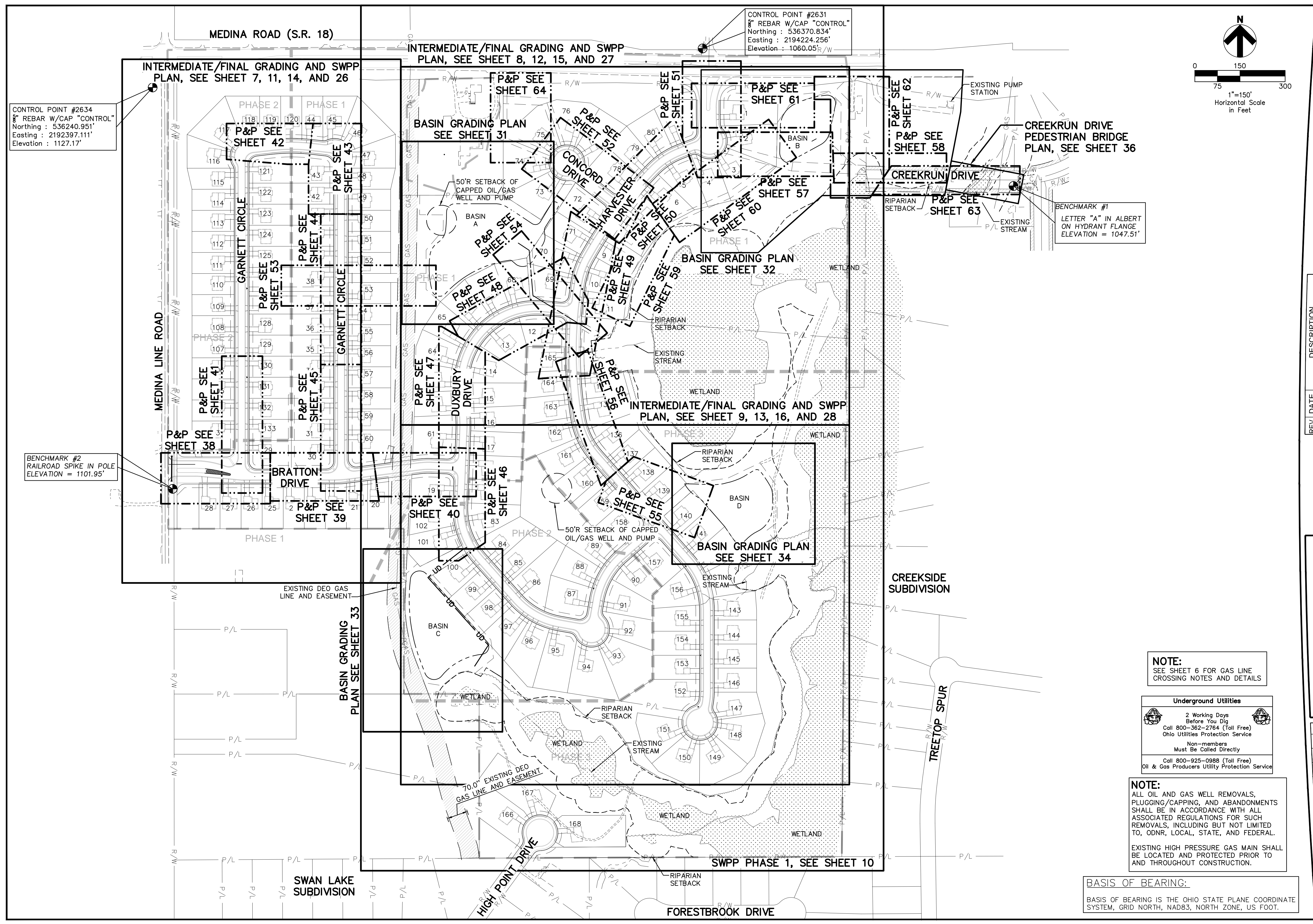


CONTROL POINT #2631
 8" REBAR W/CAP "CONTROL"
 Northing : 536370.834'
 Easting : 2194224.256'
 Elevation : 1060.05'R/W

CONTROL POINT #2634
 8" REBAR W/CAP "CONTROL"
 Northing : 536240.951'
 Easting : 2192397.111'
 Elevation : 1127.17'

BENCHMARK #1
 LETTER "A" IN ALBERT
 ON HYDRANT FLANGE
 ELEVATION = 1047.51'

BENCHMARK #2
 RAILROAD SPIKE IN POLE
 ELEVATION = 1101.95'



REV.	DATE	DESCRIPTION
1	06/02/14	REVISED PER LOCAL AGENCY COMMENTS
2	06/27/14	REVISED PER LOCAL AGENCY COMMENTS
3	07/18/14	REVISED PER LOCAL AGENCY COMMENTS
4	07/25/14	REVISED PER LOCAL AGENCY COMMENTS
5	08/01/14	MILLER PARCEL UTILITY UPDATE
6	08/05/14	COMMENTS FOR GRADING APPROVAL
7	08/20/14	REVISED PER LOCAL AGENCY COMMENTS
8	08/22/14	SANITARY REVISION MH 300-302
9	09/12/14	REVISED PER LOCAL AGENCY COMMENTS

THE PRESERVE AT MILLER'S FARM
 SE CORNER OF SR 18 AND MEDINA LINE RD
 COPLEY, OHIO 44321

KEY PLAN

ISSUED FOR:	
PERMIT	06-02-14
BID	06-02-14
CONSTRUCTION	09-16-14
RECORD	-

PROJECT MANAGER	DESIGNER
MAL	KB

JOB NO.
2013258.00

2/81

NOTE:
 SEE SHEET 6 FOR GAS LINE CROSSING NOTES AND DETAILS

Underground Utilities

2 Working Days Before You Dig
 Call 800-362-2764 (Toll Free)
 Ohio Utilities Protection Service

Non-members Must Be Called Directly
 Call 800-925-0988 (Toll Free)
 Oil & Gas Producers Utility Protection Service

NOTE:
 ALL OIL AND GAS WELL REMOVALS, PLUGGING/CAPPING, AND ABANDONMENTS SHALL BE IN ACCORDANCE WITH ALL ASSOCIATED REGULATIONS FOR SUCH REMOVALS, INCLUDING BUT NOT LIMITED TO, ODNR, LOCAL, STATE, AND FEDERAL.

EXISTING HIGH PRESSURE GAS MAIN SHALL BE LOCATED AND PROTECTED PRIOR TO AND THROUGHOUT CONSTRUCTION.

BASIS OF BEARING:
 BASIS OF BEARING IS THE OHIO STATE PLANE COORDINATE SYSTEM, GRID NORTH, NAD83, NORTH ZONE, US FOOT.