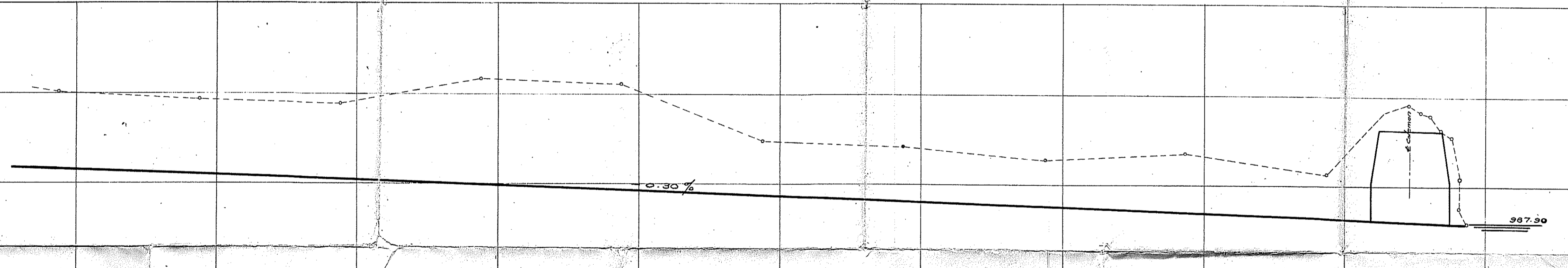


$\Delta = 11^\circ 26'$
 $R = 504.28'$
 $T = 50.43'$
 $L = 100.86'$
 $D = 11^\circ 15'$

$\Delta = 19^\circ 51'$
 $R = 294.51'$
 $T = 50.50'$
 $L = 102.03'$
 $D = 19^\circ 27' 16''$



21+0	991.00	990.65	990.70	990.55	990.40	990.25	990.10	989.85	989.80	989.65	989.50	989.35	989.20	989.05	988.90	988.75	988.60	988.45	988.30	988.15	988.00	987.94	987.94	987.86	987.78	987.70
22+0																						Inv. Pipe Arch	31+20	31+47	31+74	32+0

**TURKEYFOOT LAKE ESTATES
OUTLET DITCH**

SUMMIT COUNTY
ENGINEERING DEPARTMENT
COURT HOUSE AKRON, OHIO
L.G. WOLFE COUNTY ENGINEER

DRAWN BY: MURPHY	SCALE: HORIZ. 50' VERT. 4'
SUBMITTED BY: L.G. WOLFE	DATE: 4-27-61
DESIGNING ENGINEER	FIELD BOOK: B.I.R.
APPROVED BY: L.G. WOLFE	TRACED BY: J.W. Palmer