

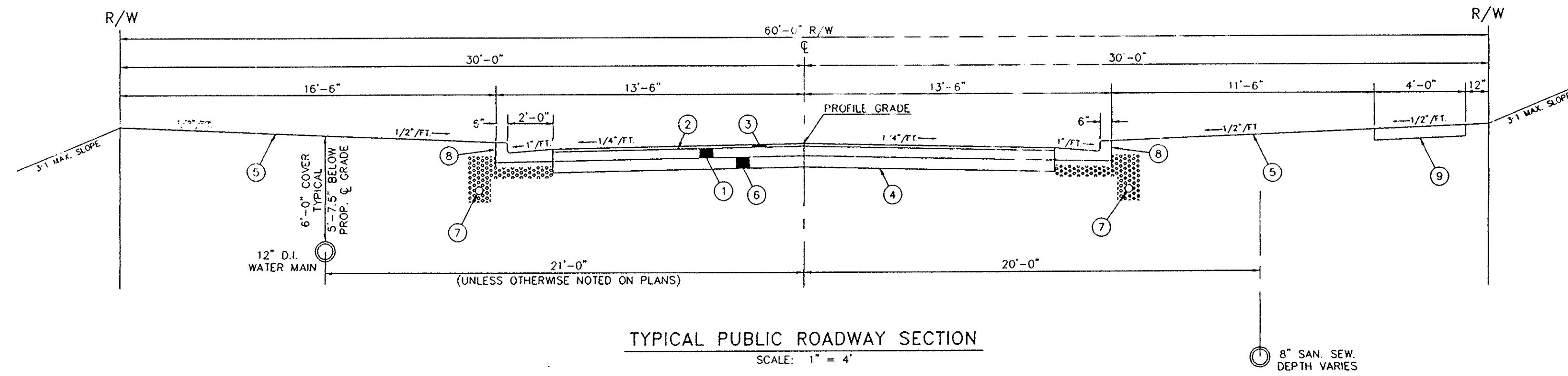
BENCHMARK:
 EXISTING INVERT (12" NW) SAN M.H. "T.A.L.X."
 TWINSBURG ROAD STA. 24+06.8L 25.68'RT.

EX. INV. ELEV. 964.07-12"NW

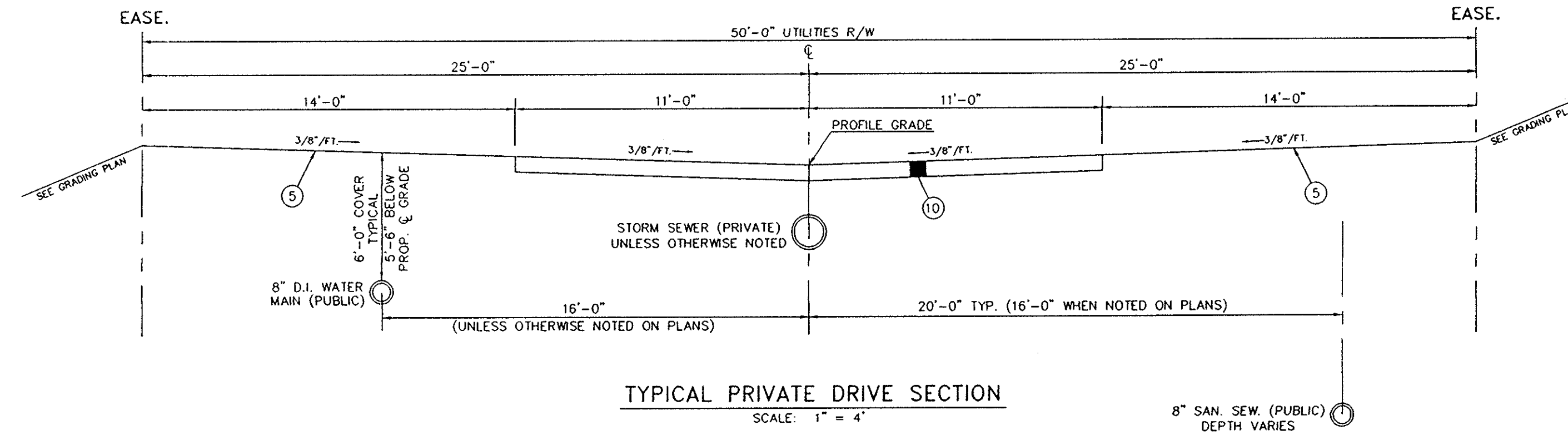
36131
VOID

LEGEND

- 1 ITEM 301 - BITUMINOUS AGGREGATE BASE 5" THICK
- 2 ITEM 407 - TACK COAT (0.1 GAL./S.Y.)
- 3 ITEM 404 - ASPHALT CONCRETE 1 1/2" THICK
- 4 ITEM 203 - SUBGRADE COMPACTION
- 5 ITEM 659 - SLEDGING AND MULCHING
- 6 ITEM 304 - AGGREGATE BASE - 6" THICK
- 7 ITEM 605 - 4" PIPE UNDERDRAINS BACKFILLED w/No. 8 AGGREGATE
- 8 ITEM 609 - O.D.O.T. TYPE 2 COMBINATION CURB & GUTTER
- 9 ITEM 608 - 4" WIDE x 4" THK. CONCRETE WALKS (6" THK. AT DRIVES)
- 10 ITEM 452 - 7" THK. PLAIN PORTLAND CEMENT



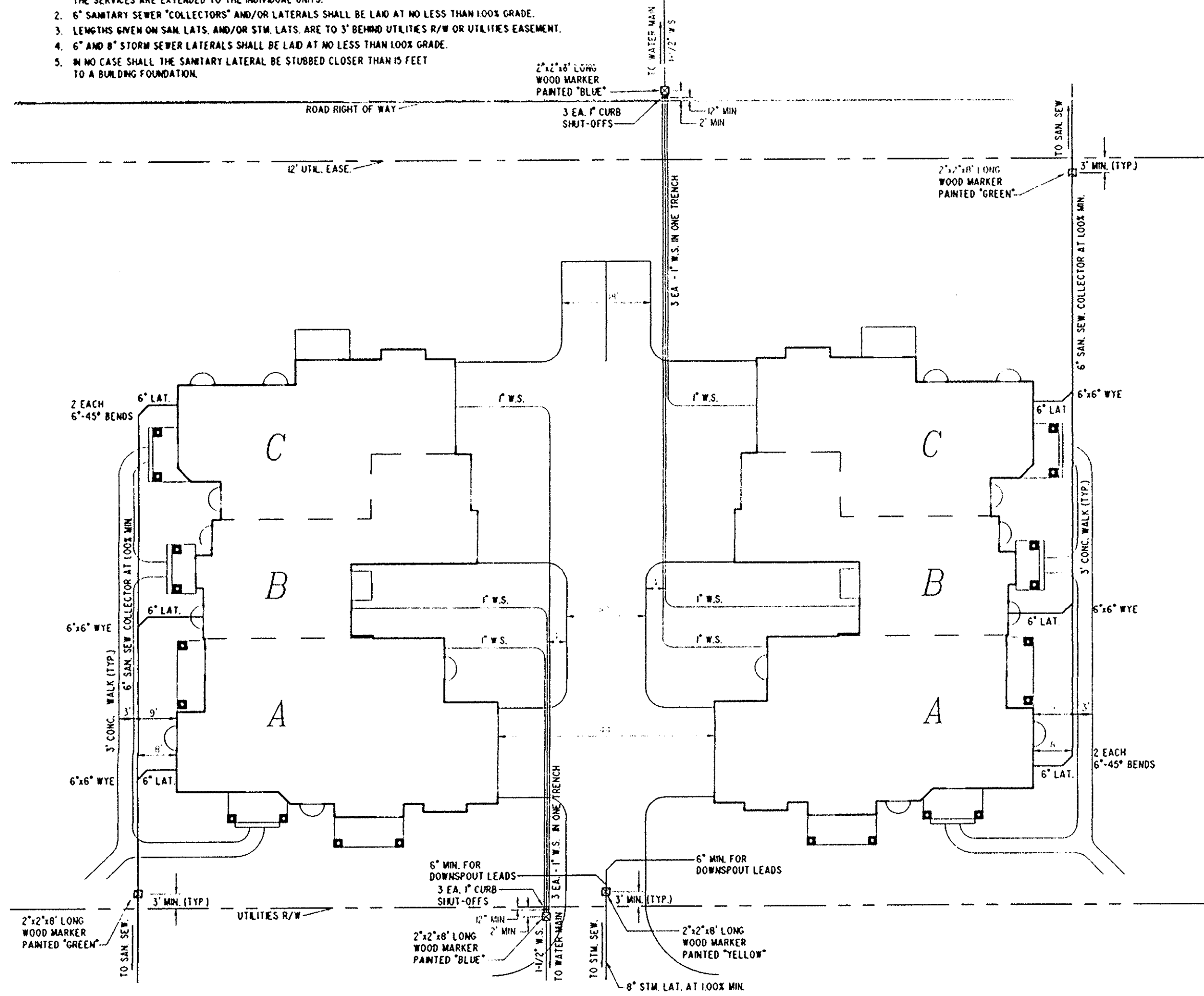
TYPICAL PUBLIC ROADWAY SECTION
 SCALE: 1" = 4'



TYPICAL PRIVATE DRIVE SECTION
 SCALE: 1" = 4'

NOTES FOR UTILITY SERVICE CONNECTIONS:

1. SANITARY SEWER LATERALS AND STORM SEWER LATERALS SHALL BE STUBBED TO NOT LESS THAN THREE FEET (3') BEYOND THE UTILITIES RIGHT OF WAY (PRIVATE DRIVES) OR THREE FEET (3') BEYOND THE UTILITIES EASEMENT (PUBLIC ROADS). WATER SERVICES SHALL BE STUBBED TO NOT MORE THAN 2' INSIDE THE UTILITIES RIGHT OF WAY (PRIVATE DRIVES) NOR MORE THAN 2' INSIDE THE RIGHT OF WAY (PUBLIC ROADS). SEE DETAIL. THE END OF THE STUBBED SANITARY SEWER LATERALS, STORM SEWER LATERALS AND WATER SERVICES SHALL BE MARKED WITH A 2" x 2" x 8' LONG WOOD MARKER. CONTRACTOR SHALL PAINT THE VISIBLE END OF THE MARKERS "GREEN" FOR SANITARY SEWERS, "YELLOW" FOR STORM SEWERS, AND "BLUE" FOR WATER SERVICES. MARKERS SHALL BE MAINTAINED UNTIL SUCH TIME AS THE SERVICES ARE EXTENDED TO THE INDIVIDUAL UNITS.
2. 6" SANITARY SEWER "COLLECTORS" AND/OR LATERALS SHALL BE LAID AT NO LESS THAN 100% GRADE.
3. LENGTHS GIVEN ON SAN. LATS. AND/OR STM. LATS. ARE TO 3' BEHIND UTILITIES R/W OR UTILITIES EASEMENT.
4. 6" AND 8" STORM SEWER LATERALS SHALL BE LAID AT NO LESS THAN 100% GRADE.
5. IN NO CASE SHALL THE SANITARY LATERAL BE STUBBED CLOSER THAN 15 FEET TO A BUILDING FOUNDATION.

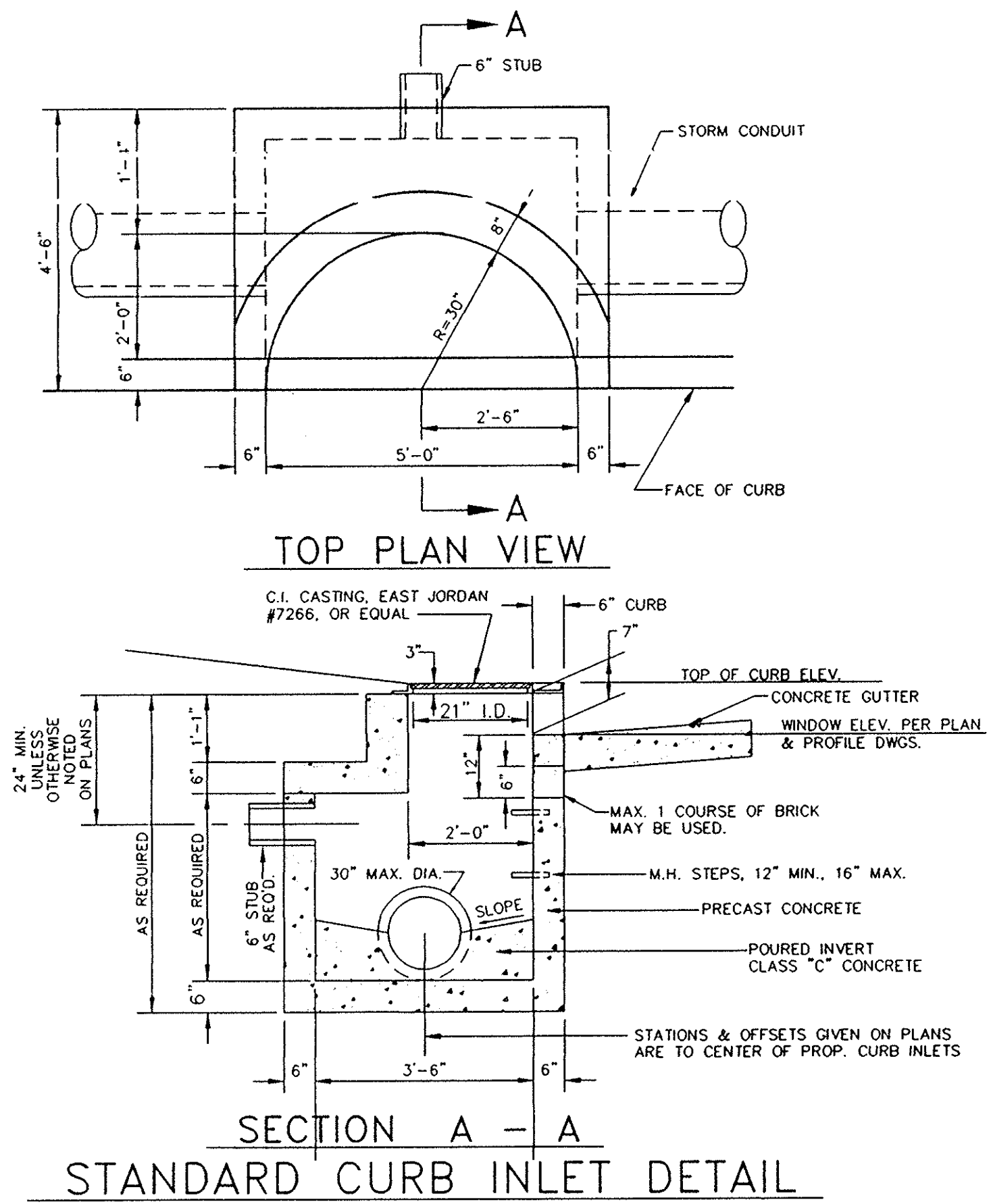


DETAIL FOR TYPICAL TRIPLEX SERVICE CONNECTIONS
 SCALE: 1" = 20'

VOID

NOTE:

1. STEPS SHALL BE REQUIRED FOR INLETS GREATER THAN 4'-0" DEEP AS MEASURED FROM THE WINDOW TO THE INVERT OF THE OUTLET PIPE. MATERIAL SHALL BE PER O.D.O.T. 711.31.
2. PRECAST BASES SHALL BE MANUFACTURED WITH OPENINGS PROVIDED, INCLUDING WHERE NECESSARY, UNDERDRAINS, STORM COLLECTORS AND STORM LATERALS PRIOR TO SHIPPING TO SITE.
3. THE WINDOW ELEVATION SHALL BE THE TOP OF CURB ELEVATION MINUS 10" UNLESS OTHERWISE SHOWN.
4. INLETS SHALL HAVE POURED INVERTS USING CLASS "C" CONCRETE.
5. ALL CONDUITS SHALL BE FLUSH WITH THE INSIDE WALL OF THE INLET AND GROUTED TO PROVIDE A SMOOTH FINISH.



SECTION A - A
 STANDARD CURB INLET DETAIL

TYPICAL PUBLIC ROADWAY SECTION / TYPICAL PRIVATE DRIVE SECTION / MISC. DETAILS

VOID

36131