

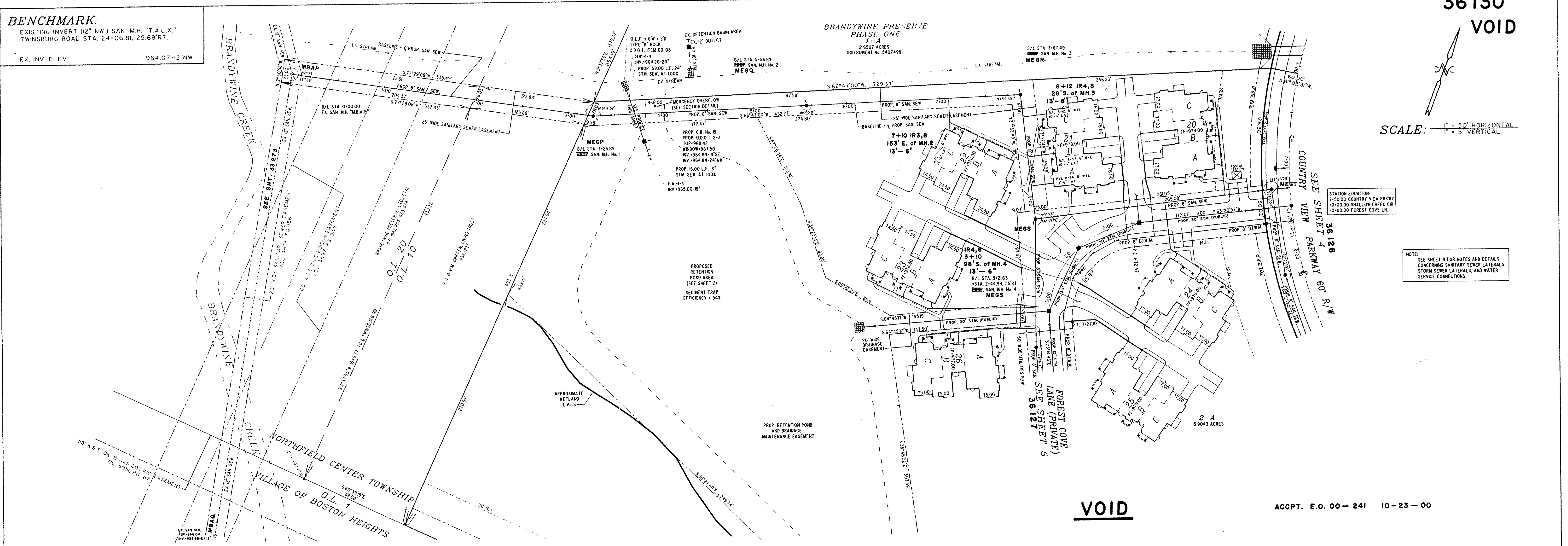
**BENCHMARK:**  
 EXISTING INVERT (12" NW) SAN MH "T.A.L.X."  
 TWINSBURG ROAD STA. 24+06.81, 25.68'RT.  
 EX INV. ELEV. 964.07-12"NW

**36130 VOID**

SCALE: 1" = 50' HORIZONTAL  
 1" = 5' VERTICAL

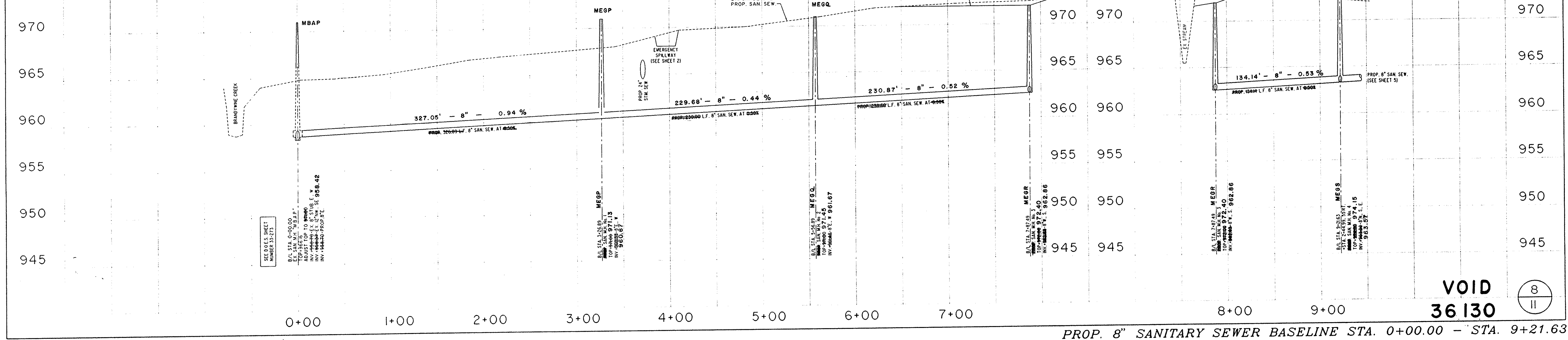
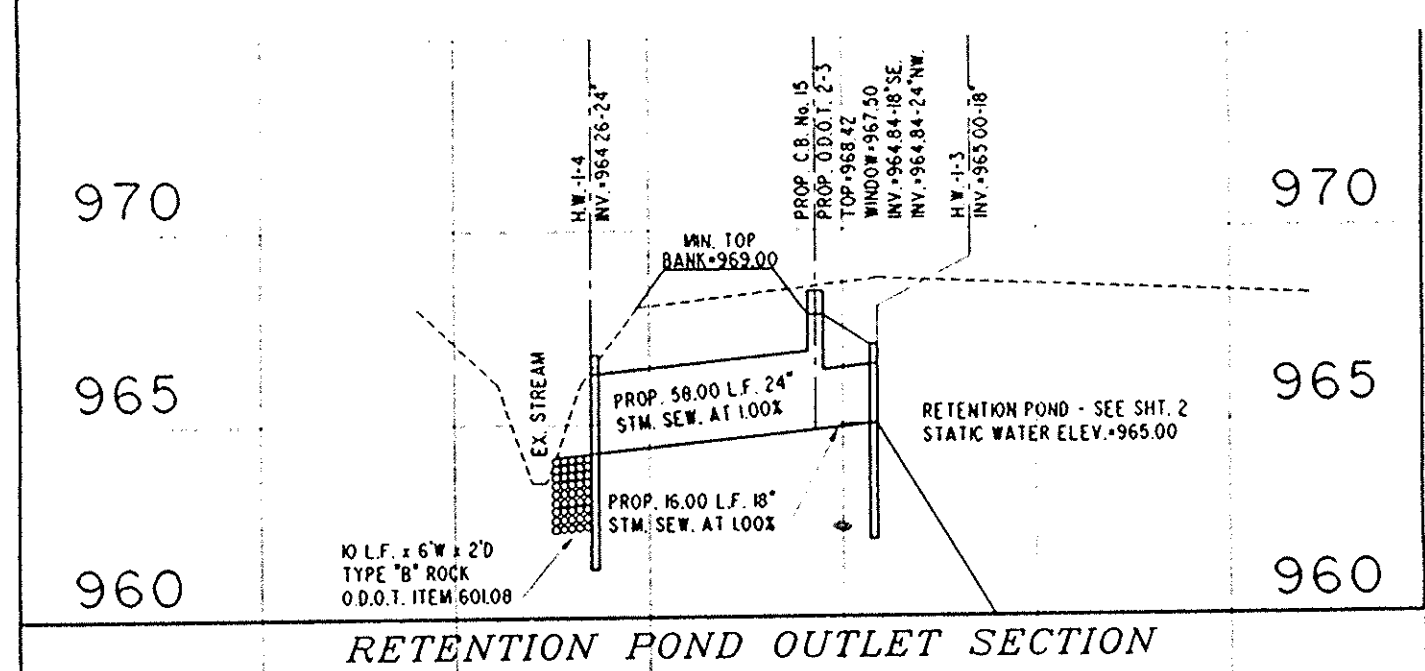
STATION EQUATION:  
 1+50.00 COUNTRY VIEW PKWY  
 10+00.00 SHALLOW CREEK CR  
 0+00.00 FOREST COVE LN

NOTE:  
 SEE SHEET 9 FOR NOTES AND DETAILS  
 CONCERNING SANITARY SEWER LATERALS,  
 STORM SEWER LATERALS, AND WATER  
 SERVICE CONNECTIONS.



**VOID**

ACCP. E.O. 00-241 10-23-00



**VOID 36130**

8  
 11

PROP. 8" SANITARY SEWER BASELINE STA. 0+00.00 - STA. 9+21.63