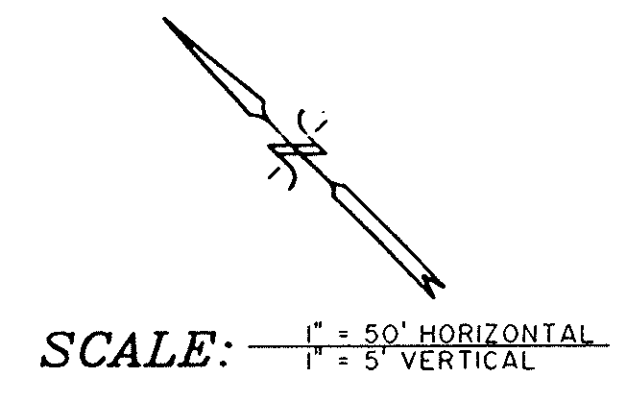
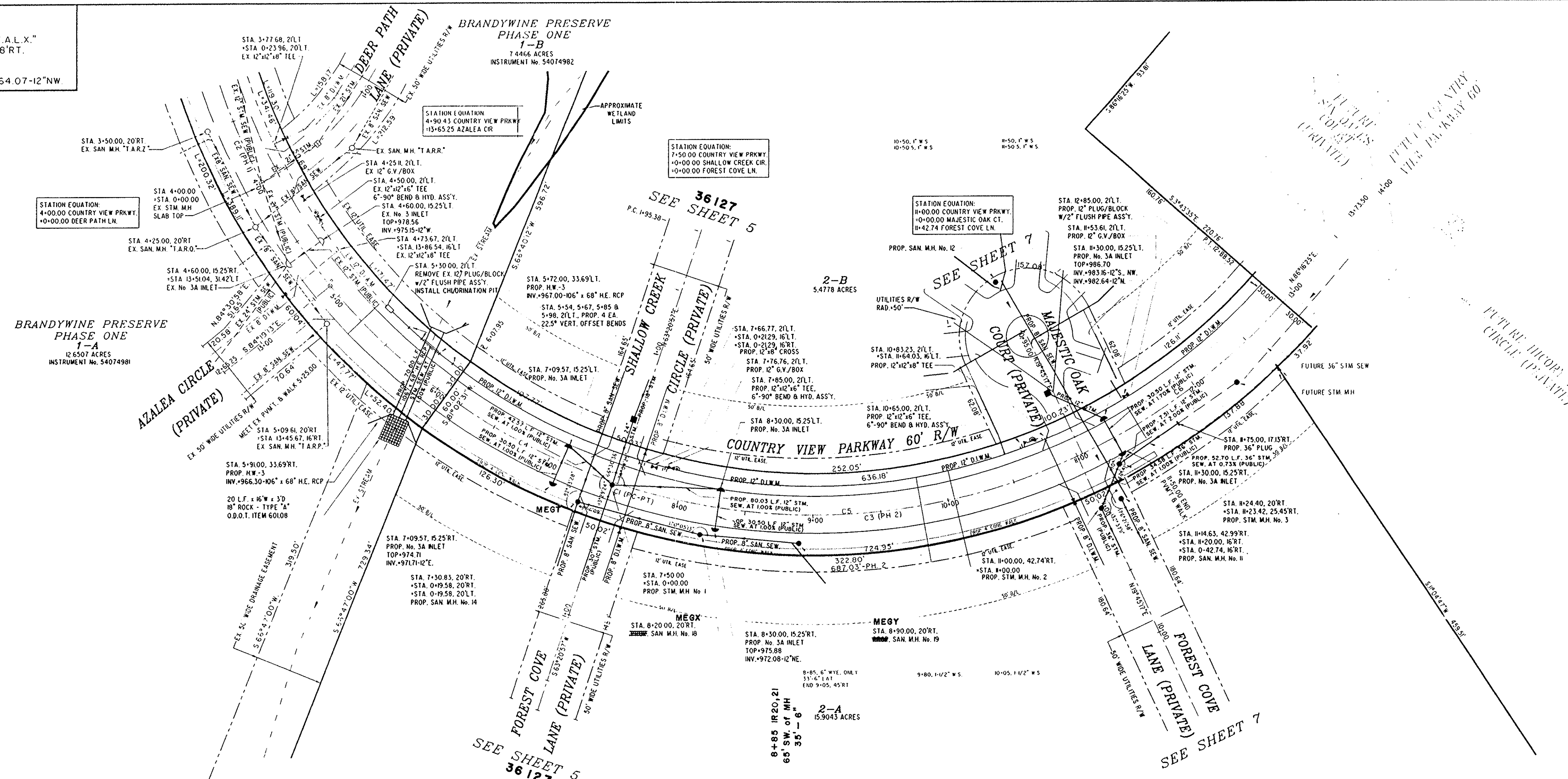


**BENCHMARK:**  
 EXISTING INVERT (I2" NW.) SAN. M.H. "T.A.L.X."  
 TWINSBURG ROAD STA. 24+06.81, 25.68"RT."  
 EX. INV. ELEV. 964.07-12"NW

**36126  
VOID**



NOTE:  
 SEE SHEET 9 FOR NOTES AND DETAILS  
 CONCERNING SANITARY SEWER LATERALS,  
 STORM SEWER LATERALS, AND WATER  
 SERVICE CONNECTIONS.

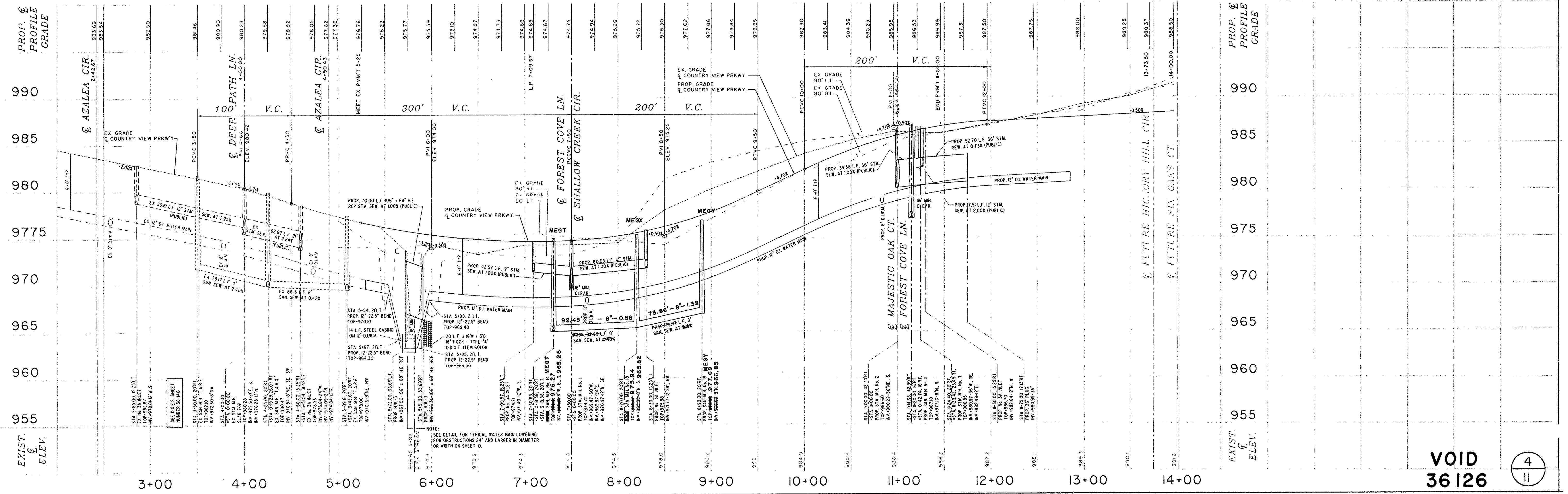


**CURVE TABLE**

| CURVE #           | RADIUS | LENGTH  | CHORD  | CHORD BEARING | DELTA ANGLE | TANGENT |
|-------------------|--------|---------|--------|---------------|-------------|---------|
| (P.C. TO P.T.) C1 | 460.00 | 1045.85 | 834.71 | N 28°35'35" W | 130°16'0"   | 992.50  |
| (PHASE 1) C2      | 460.00 | 365.28  | 355.76 | N 13°47'28" E | 45°23'54"   | 192.89  |
| C3                | 460.00 | 680.56  | 620.17 | N 51°20'52" W | 64°46'6"    | 419.80  |
| C4                | 460.00 | 142.05  | 141.48 | N 17°48'16" W | 17°41'53"   | 71.59   |
| C5                | 460.00 | 350.00  | 341.62 | N 48°26'53" W | 43°35'41"   | 183.96  |
| C6                | 460.00 | 188.52  | 187.20 | N 81°59'09" W | 23°28'52"   | 95.60   |

**VOID**

ACCP. E.O. 00-241 10-23-00



**VOID  
36126**

COUNTRY VIEW PARKWAY STA. 6+07.95 - STA. 12+88.52