

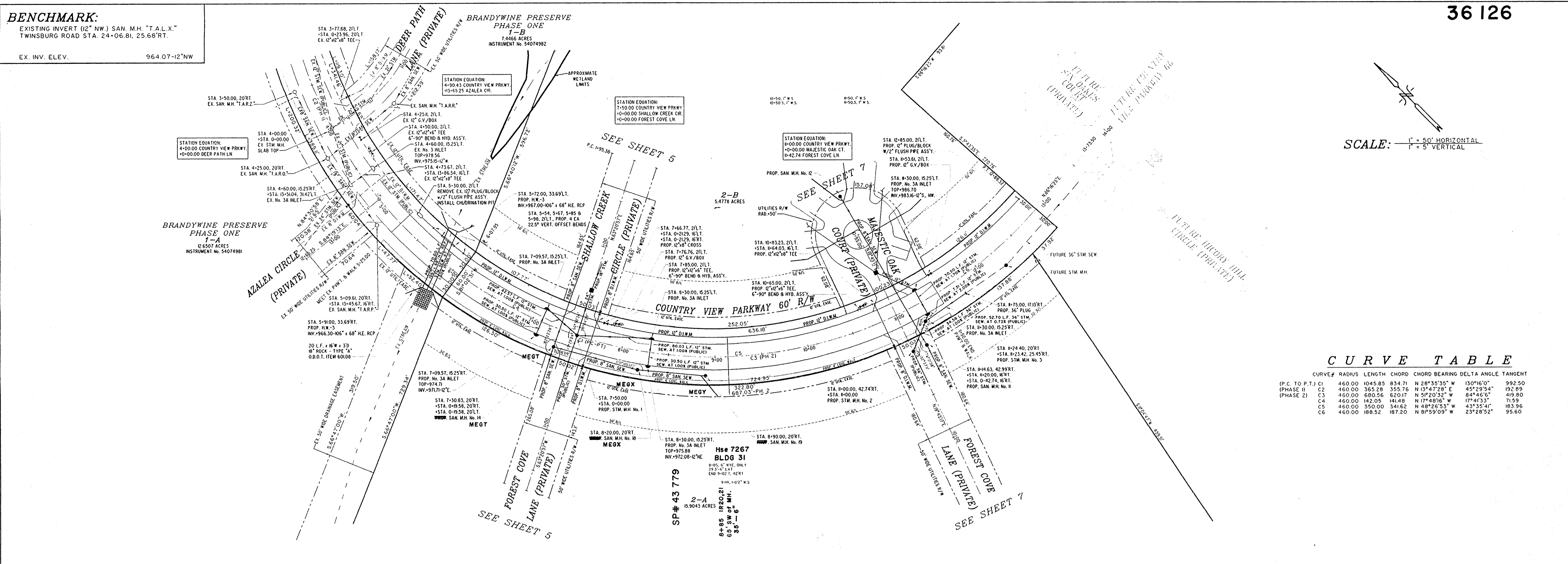
BENCHMARK:

EXISTING INVERT (12" NW.) SAN. MH. "T.A.L.X."
TWINSBURG ROAD STA. 24+06.81, 25.68'RT.

EX. INV. ELEV. 964.07-12'NW

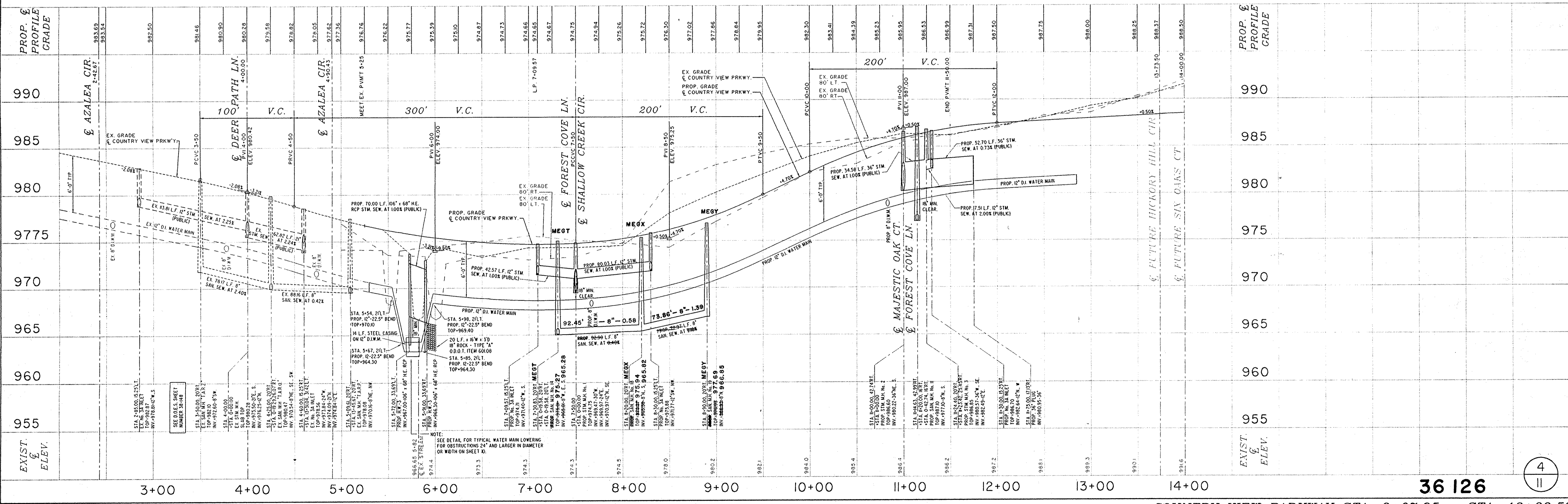
36 126

SCALE: 1" = 50' HORIZONTAL
1" = 5' VERTICAL



CURVE TABLE

CURVE#	RADIUS	LENGTH	CHORD	CHORD BEARING	DELTA ANGLE	TANGENT
(P.C. TO P.T.) C1	460.00	1045.85	834.71	N 28°35'35" W	130°16'0"	992.50
(PHASE 1) C2	460.00	365.28	355.76	N 13°47'28" E	45°29'54"	192.69
(PHASE 2) C3	460.00	680.56	620.17	N 5°20'32" W	84°46'15"	419.80
C4	460.00	142.05	141.48	N 17°48'16" W	17°41'33"	71.59
C5	460.00	350.00	341.62	N 48°26'53" W	43°35'47"	183.96
C6	460.00	188.52	187.20	N 81°59'09" W	23°28'52"	95.60



36 126

4
11