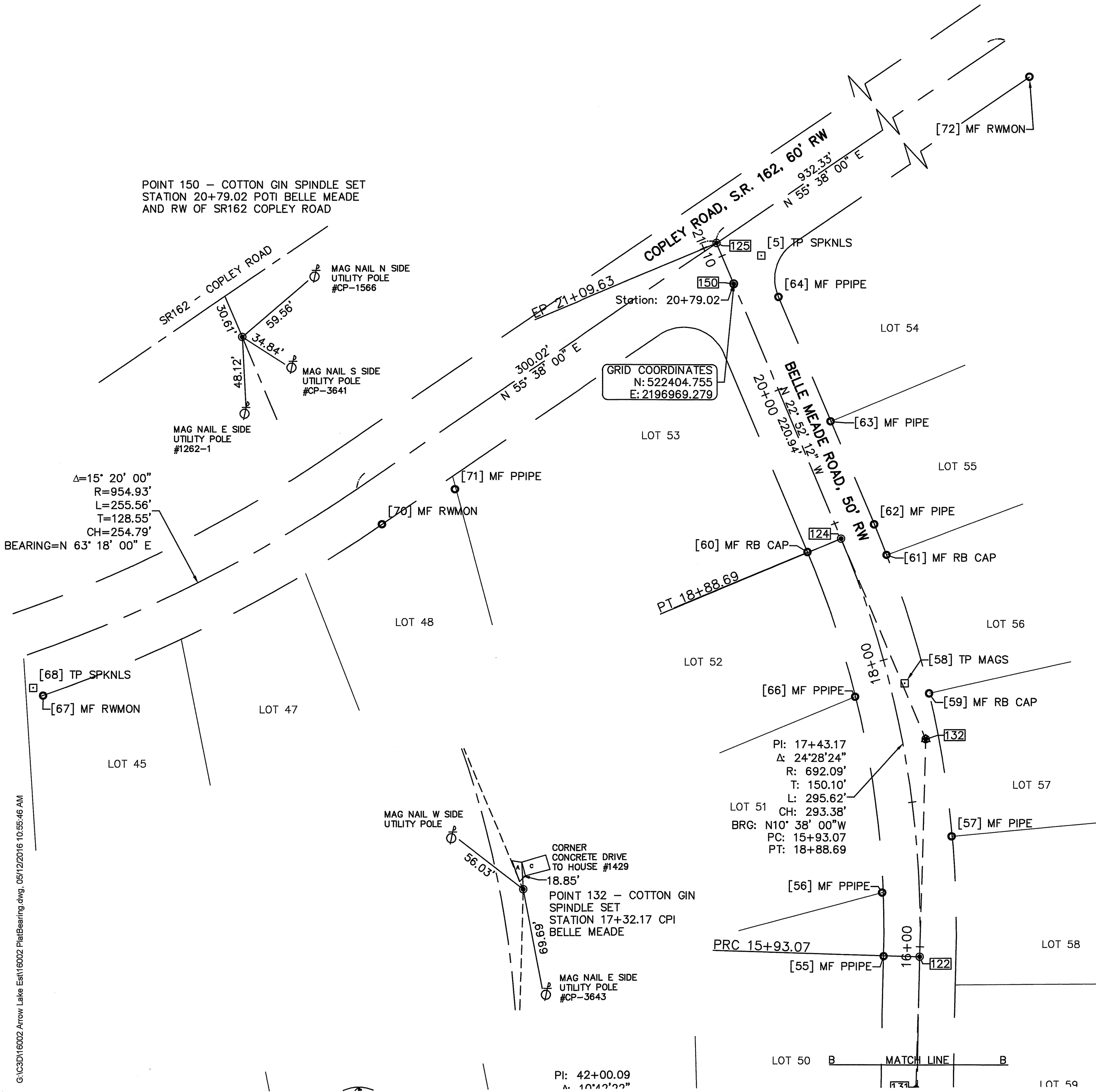


POINT 150 - COTTON GIN SPINDLE SET  
STATION 20+79.02 POTI BELLE MEADE  
AND RW OF SR162 COPLEY ROAD



GRID COORDINATES  
N: 522404.755  
E: 2196969.279

$\Delta=15^{\circ} 20' 00''$   
 $R=954.93'$   
 $L=255.56'$   
 $T=128.55'$   
 $CH=254.79'$   
BEARING=N  $63^{\circ} 18' 00''$  E

PI: 17+43.17  
 $\Delta: 24^{\circ} 28' 24''$   
 $R: 692.09'$   
 $T: 150.10'$   
 $L: 295.62'$   
CH: 293.38'  
BRG: N10° 38' 00" W  
PC: 15+93.07  
PT: 18+88.69

CORNER CONCRETE DRIVE TO HOUSE #1429  
18.85'  
POINT 132 - COTTON GIN SPINDLE SET  
STATION 17+32.17 CPI BELLE MEADE

Page 4 of 5  
3/30/17 11:03 AM Recording Fee: \$ 0.00  
Kristen M. Sealice, CPA, CPE, Summit County Fiscal Officer  
DOC # 56287220

**Prepared by:**  
**Summit County Engineer**  
538 E. South St.  
Akron, OH 44311-1843  
Tele: (330) 643-2850  
Fax: (330) 762-7829  
Website: <http://summitengineer.net>

G:\C3D\16002 Arrow Lake Est\16002 Plot\Bearing.dwg, 05/12/2016 10:55:46 AM