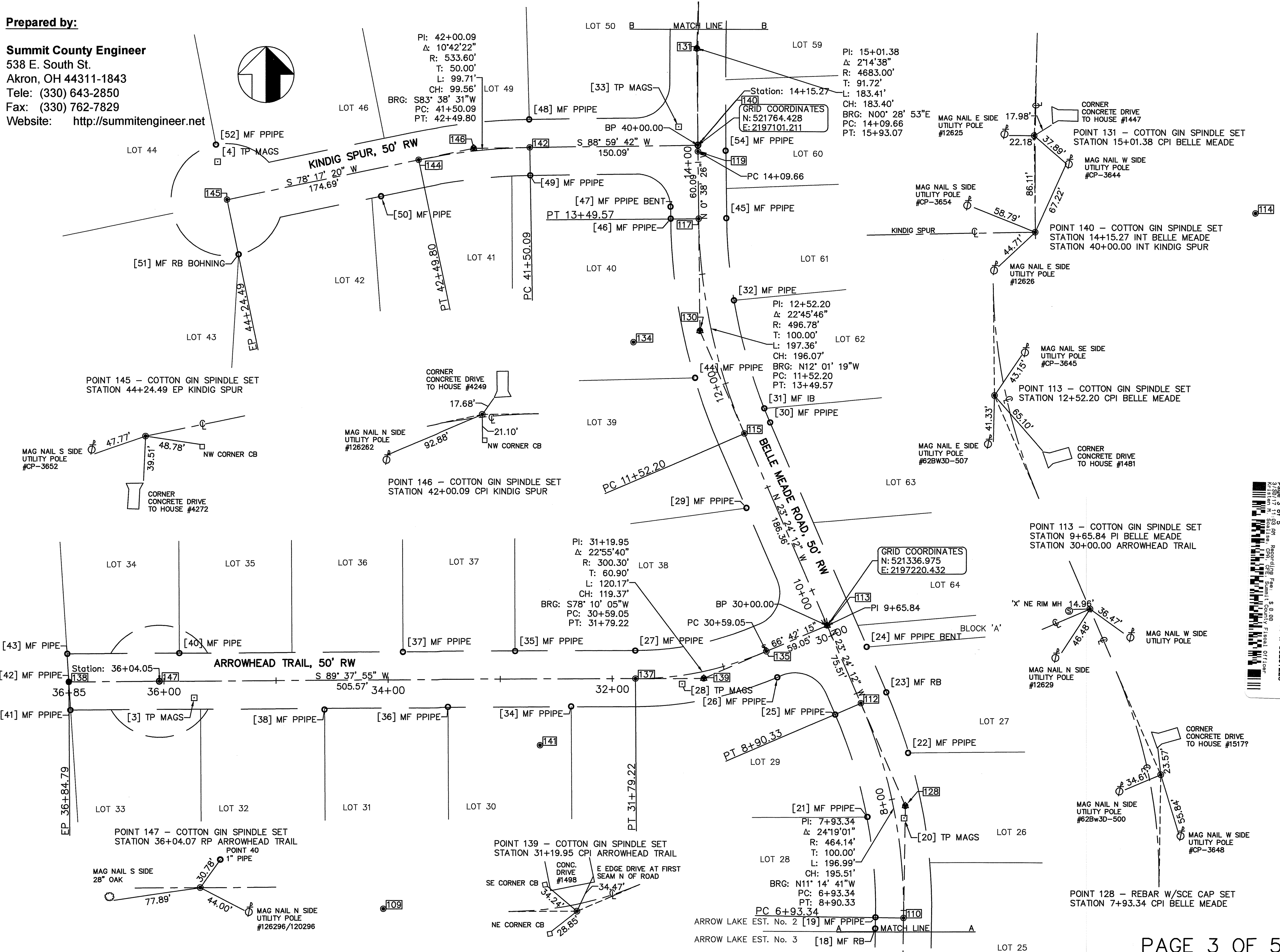
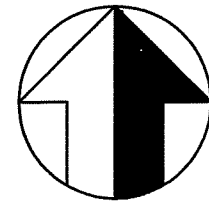


Prepared by:

Summit County Engineer
538 E. South St.
Akron, OH 44311-1843
Tele: (330) 643-2850
Fax: (330) 762-7829
Website: <http://summitengineer.net>



PI: 42+00.09
Δ: 10°42'22"
R: 533.60'
T: 50.00'
L: 99.71'
CH: 99.56'
BRG: S83° 38' 31"W
PC: 41+50.09
PT: 42+49.80

PI: 15+01.38
Δ: 2°14'38"
R: 4683.00'
T: 91.72'
L: 183.41'
CH: 183.40'
BRG: N00° 28' 53"E
PC: 14+09.66
PT: 15+93.07

Station: 14+15.27
GRID COORDINATES
N: 521764.428
E: 2197101.211

PI: 12+52.20
Δ: 22°45'46"
R: 496.78'
T: 100.00'
L: 197.36'
CH: 196.07'
BRG: N12° 01' 19"W
PC: 11+52.20
PT: 13+49.57

PI: 31+19.95
Δ: 22°55'40"
R: 300.30'
T: 60.90'
L: 120.17'
CH: 119.37'
BRG: S78° 10' 05"W
PC: 30+59.05
PT: 31+79.22

GRID COORDINATES
N: 521336.975
E: 2197220.432

PI: 7+93.34
Δ: 24°19'01"
R: 464.14'
T: 100.00'
L: 196.99'
CH: 195.51'
BRG: N11° 14' 41"W
PC: 6+93.34
PT: 8+90.33

POINT 147 - COTTON GIN SPINDLE SET
STATION 36+04.07 RP ARROWHEAD TRAIL

POINT 139 - COTTON GIN SPINDLE SET
STATION 31+19.95 CPI ARROWHEAD TRAIL

POINT 128 - REBAR W/SCE CAP SET
STATION 7+93.34 CPI BELLE MEADE

G:\CS\16002 Arrow Lake Est\16002 Plot\Bearing.dwg, 05/12/2016 10:55:19 AM

Page 3 of 5
2/20/17 11:03 AM Recording Fee: \$ 0.00
11/11/17 11:03 AM Operator: OP: OZ: Summit County Fiscal Office

DOC # 56287220