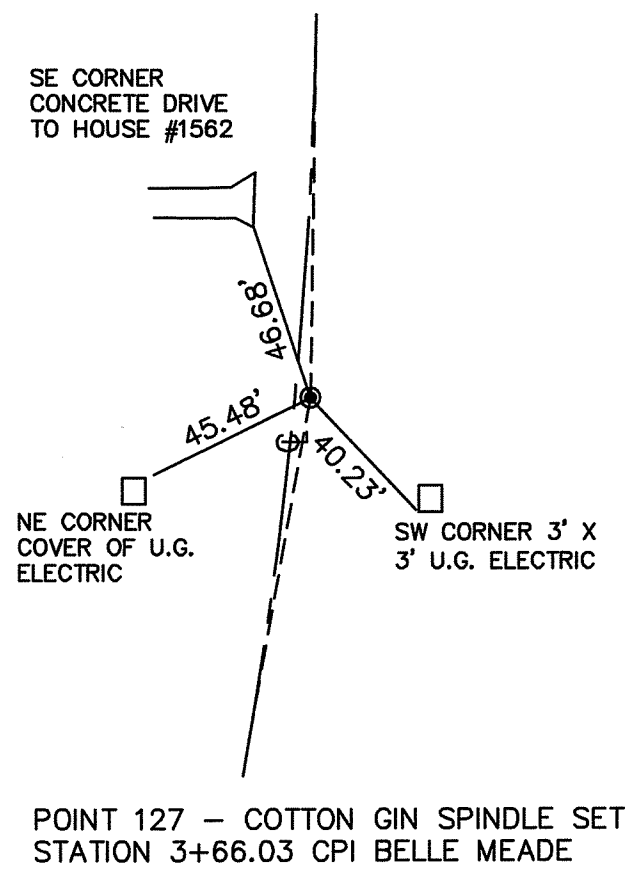
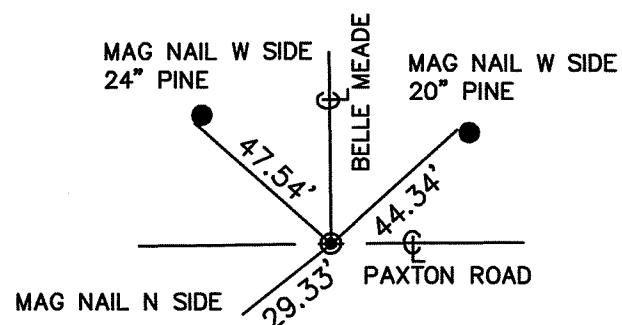


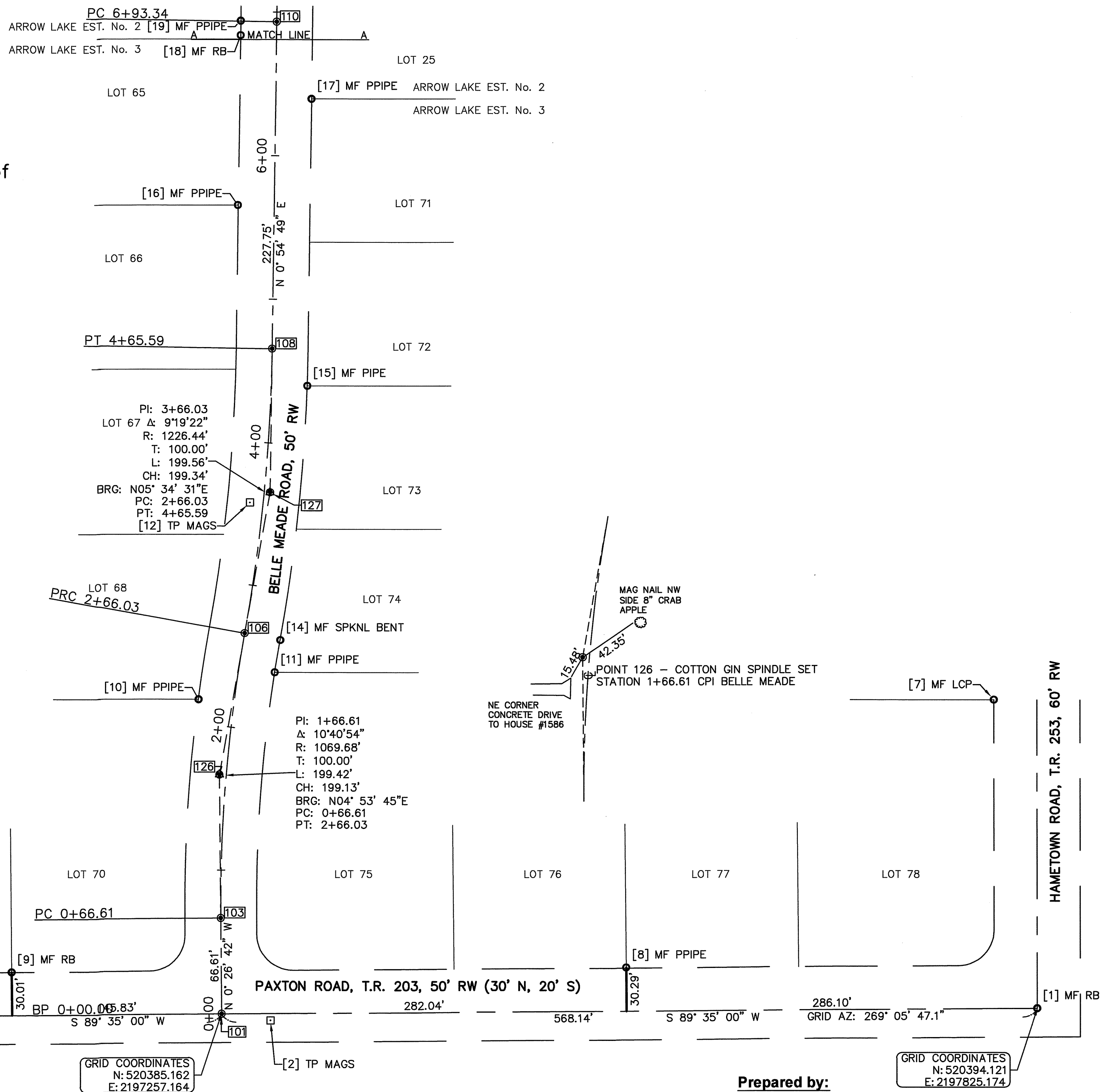
The Basis of Bearing is the centerline of Paxton Road as shown in Arrow Lake Estates No. 3 with a record bearing of S 89°35' W.  
 To convert from Record Bearing to Grid North of the Ohio State Plane Coordinate System (North Zone) rotate the listed bearings 0°28'13" counterclockwise.



POINT 127 - COTTON GIN SPINDLE SET STATION 3+66.03 CPI BELLE MEADE



POINT 101 - COTTON GIN SPINDLE SET STATION 0+00 BELLE MEADE



GRID COORDINATES  
 N: 520385.162  
 E: 2197257.164

GRID COORDINATES  
 N: 520394.121  
 E: 2197825.174

Prepared by:

**Summit County Engineer**  
 538 E. South St.  
 Akron, OH 44311-1843  
 Tele: (330) 643-2850  
 Fax: (330) 762-7829  
 Website: <http://summitengineer.net>