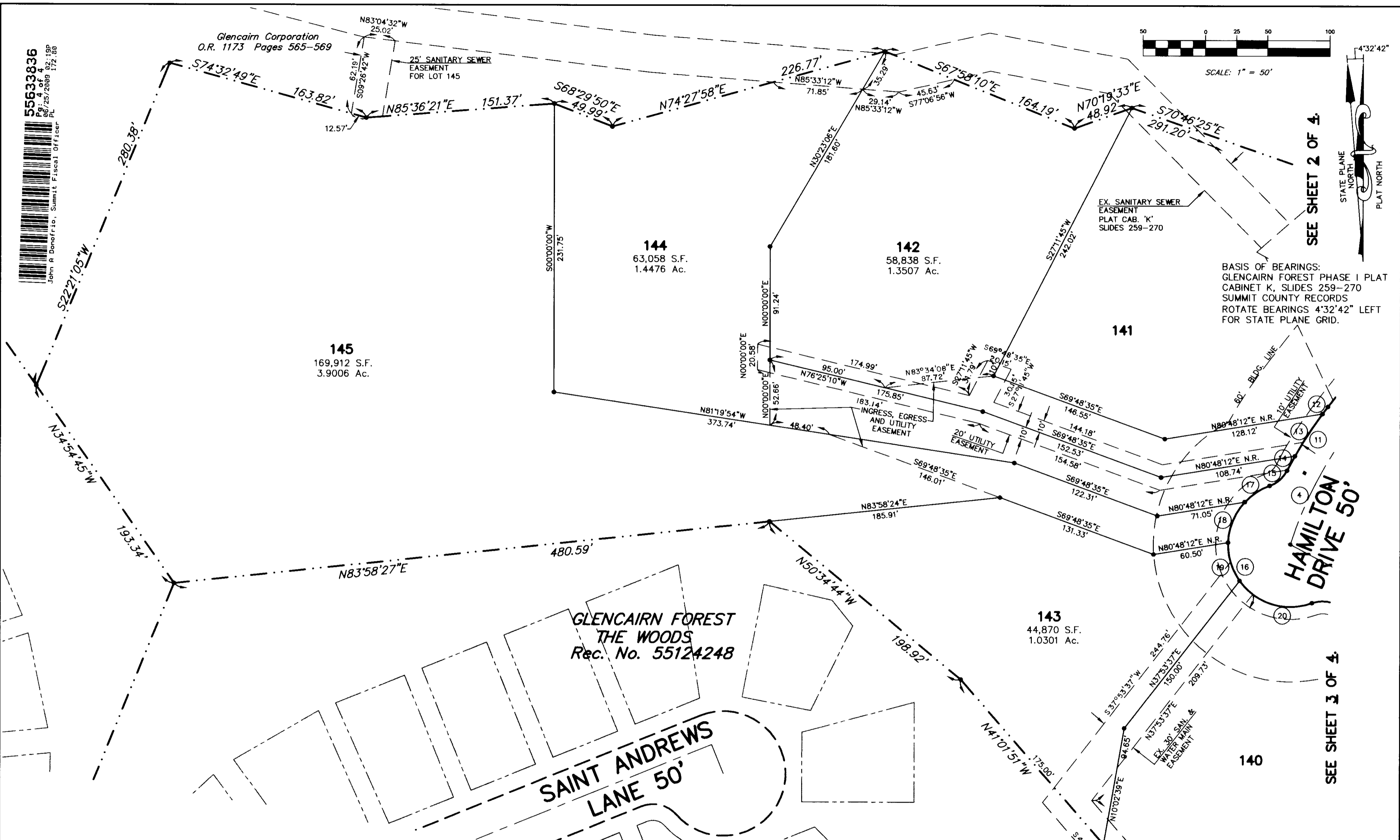
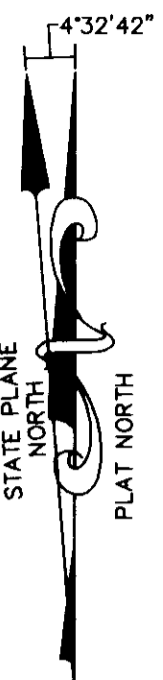
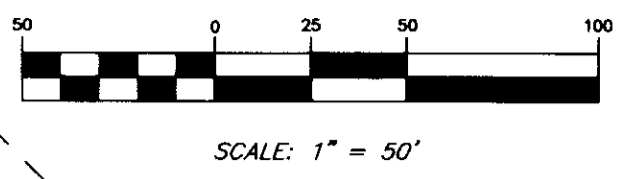


556333836
Pg. 4 of 4
PL 06/25/2009 02:19P
John P. Donerrio, Summit Fiscal Officer
172.88



SEE SHEET 2 OF 4

SEE SHEET 3 OF 4

Approved by the Richfield Township Zoning Office this 29th
day of JANUARY, 2009.
[Signature]
Zoning Inspector

Approved by the County of Summit Planning Commission this
15th day of MAY, 2009.
[Signature] Chairman
[Signature] Secretary

Approved by the Summit County Engineers Office this 29th
day of MAY, 2009.
[Signature]
Summit County Engineer

LEGEND

- IRON PINS TO BE SET AT ALL LOT CORNERS AFTER CONSTRUCTION (WITH IDENTIFICATION CAP 7604)
- IRON PIN FOUND
- MONUMENT ASSEMBLY TO BE SET DURING CONSTRUCTION (WITH IDENTIFICATION CAP 7604 ON 3/4" IRON BARS)
- MONUMENT BOX WITH IRON PIN FOUND
- CURVE DATA
- N.R. NON RADIAL

CURVE DATA						
CURVE	DELTA	RADIUS	TANGENT	CHORD	LENGTH	CHORD BEARING
4	20°38'39"	300.00'	54.64'	107.51'	108.09'	S27°34'18"W
11	10°44'51"	325.00'	30.57'	60.87'	60.96'	S32°31'12"W
12	1°15'56"	325.00'	3.59'	7.18'	7.18'	S37°15'40"W
13	7°08'59"	325.00'	20.30'	40.53'	40.55'	S33°03'12"W
14	2°19'57"	325.00'	6.62'	13.23'	13.23'	S28°18'45"W
15	43°25'55"	25.00'	9.96'	18.50'	18.95'	N48°51'44"E
16	180°57'20"	50.00'	5995.13'	100.00'	157.91'	S19°53'59"E
17	27°36'45"	50.00'	12.29'	23.86'	24.10'	S56°46'19"W
18	41°13'27"	50.00'	18.81'	35.20'	35.97'	S22°21'14"W
19	37°19'51"	50.00'	16.89'	32.00'	32.58'	S16°55'25"E
20	74°47'18"	50.00'	38.22'	60.73'	65.27'	S72°59'00"E

CHICAGO TITLE INSURANCE CO.
ORDER NO. 29153672

09-218

F:\GLENCAIR\DWG\PHASE\02-10 PLAT-3 1/06/09