

LEGEND

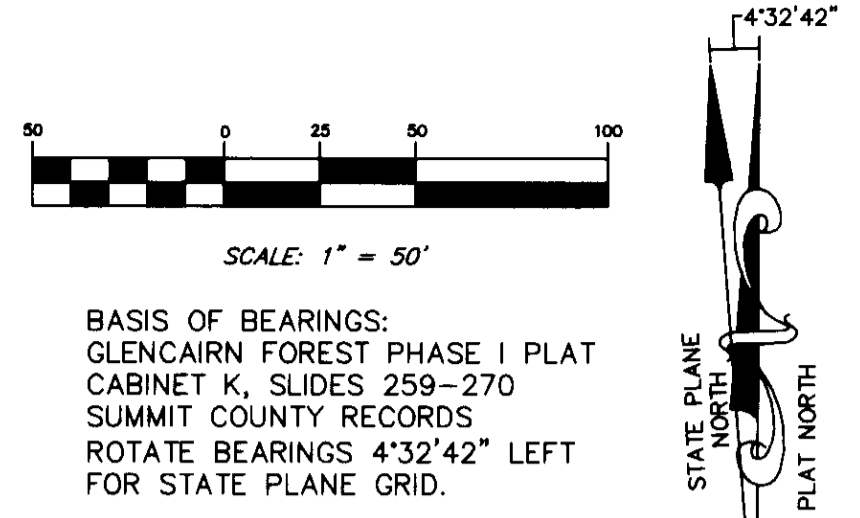
- IRON PINS TO BE SET AT ALL LOT CORNERS AFTER CONSTRUCTION (WITH IDENTIFICATION CAP 7604)
- IRON PIN FOUND
- MONUMENT ASSEMBLY TO BE SET DURING CONSTRUCTION (WITH I.D. CAP 7604 ON 3/4" IRON BARS)
- MONUMENT BOX WITH IRON PIN FOUND
- CURVE DATA
- N.R. NON RADIAL

Approved by the Richfield Township Zoning Office this 29th day of January, 2009.
[Signature]
 Zoning Inspector

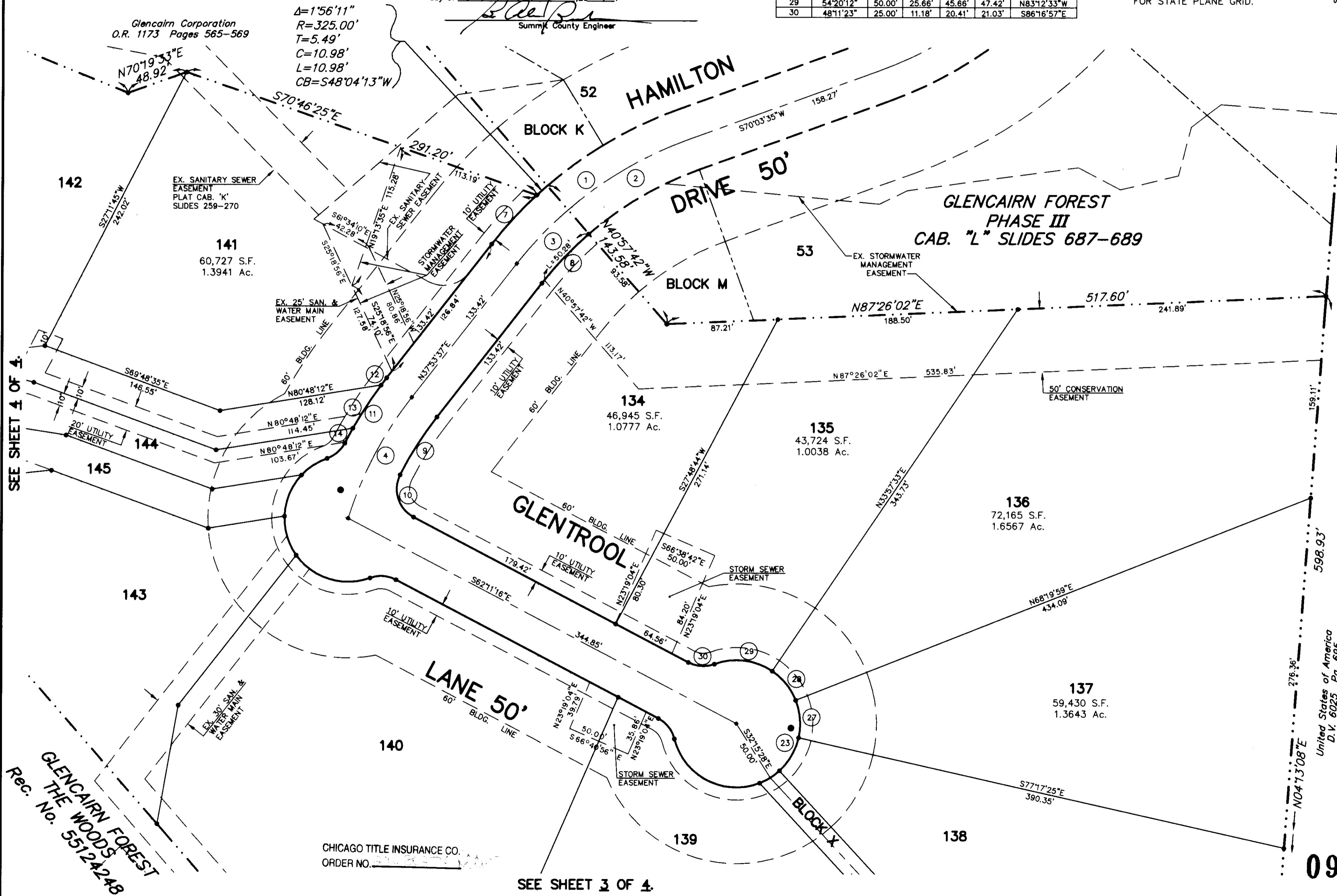
Approved by the County of Summit Planning Commission this 15th day of May, 2009.
[Signature]
 Chairman
[Signature]
 Secretary

Approved by the Summit County Engineers Office this 29th day of May, 2009.
[Signature]
 Summit County Engineer

CURVE	DELTA	RADIUS	TANGENT	CHORD	LENGTH	CHORD BEARING
1	32°09'58"	300.00'	86.49'	166.22'	168.42'	S53°58'36"W
2	21°01'17"	300.00'	55.66'	109.45'	110.07'	S59°32'56"W
3	11°08'41"	300.00'	29.27'	58.26'	58.35'	S43°27'58"W
4	20°38'39"	300.00'	54.64'	107.51'	108.09'	S27°34'18"W
7	9°12'30"	325.00'	26.17'	52.18'	52.23'	S42°29'52"W
8	11°08'41"	275.00'	26.83'	53.41'	53.49'	S43°27'58"W
9	11°13'34"	275.00'	27.03'	53.80'	53.88'	S32°16'50"W
10	88°51'19"	25.00'	24.51'	35.00'	38.77'	S17°45'36"E
11	10°44'51"	325.00'	30.57'	60.87'	60.96'	S32°31'12"W
12	1°15'56"	325.00'	3.59'	7.18'	7.18'	S37°15'40"W
13	7°08'59"	325.00'	20.30'	40.53'	40.55'	S33°03'12"W
14	2°19'57"	325.00'	6.62'	13.23'	13.23'	S28°18'45"W
23	276°22'46"	50.00'	44.72'	66.67'	241.19'	N27°48'44"E
27	34°22'36"	50.00'	15.47'	29.55'	30.00'	N04°28'43"W
28	34°22'26"	50.00'	15.47'	29.55'	30.00'	N38°51'14"W
29	54°20'12"	50.00'	25.66'	45.66'	47.42'	N83°12'33"W
30	48°11'23"	25.00'	11.18'	20.41'	21.03'	S86°16'57"E



BASIS OF BEARINGS:
 GLENCAIRN FOREST PHASE I PLAT
 CABINET K, SLIDES 259-270
 SUMMIT COUNTY RECORDS
 ROTATE BEARINGS 4°32'42" LEFT
 FOR STATE PLANE GRID.



SEE SHEET 4 OF 4.

SEE SHEET 3 OF 4.

GLENCAIRN FOREST
 THE WOODS
 Rec. No. 5512A248

CHICAGO TITLE INSURANCE CO.
 ORDER NO. _____

55633836
 Pg. 2 of 4
 06/25/2009 02:13P
 John R. Donofrio, Summit Fiscal Officer, FL

United States of America
 D.V. 6025 Pg. 695

09-218

F:\GLENCAIRN\DWG\PHASE10\2-10 PLAT-1 1/06/09