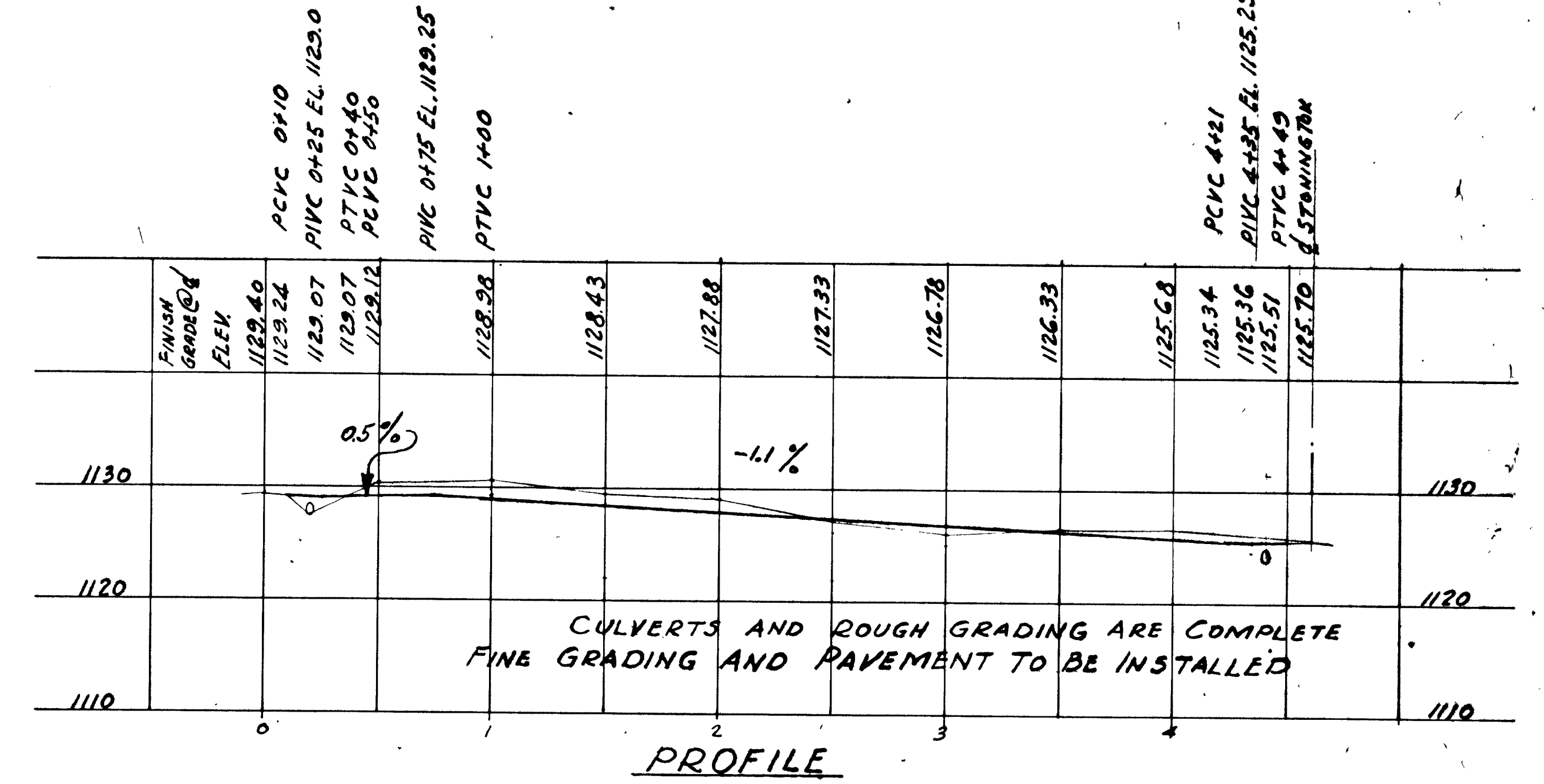
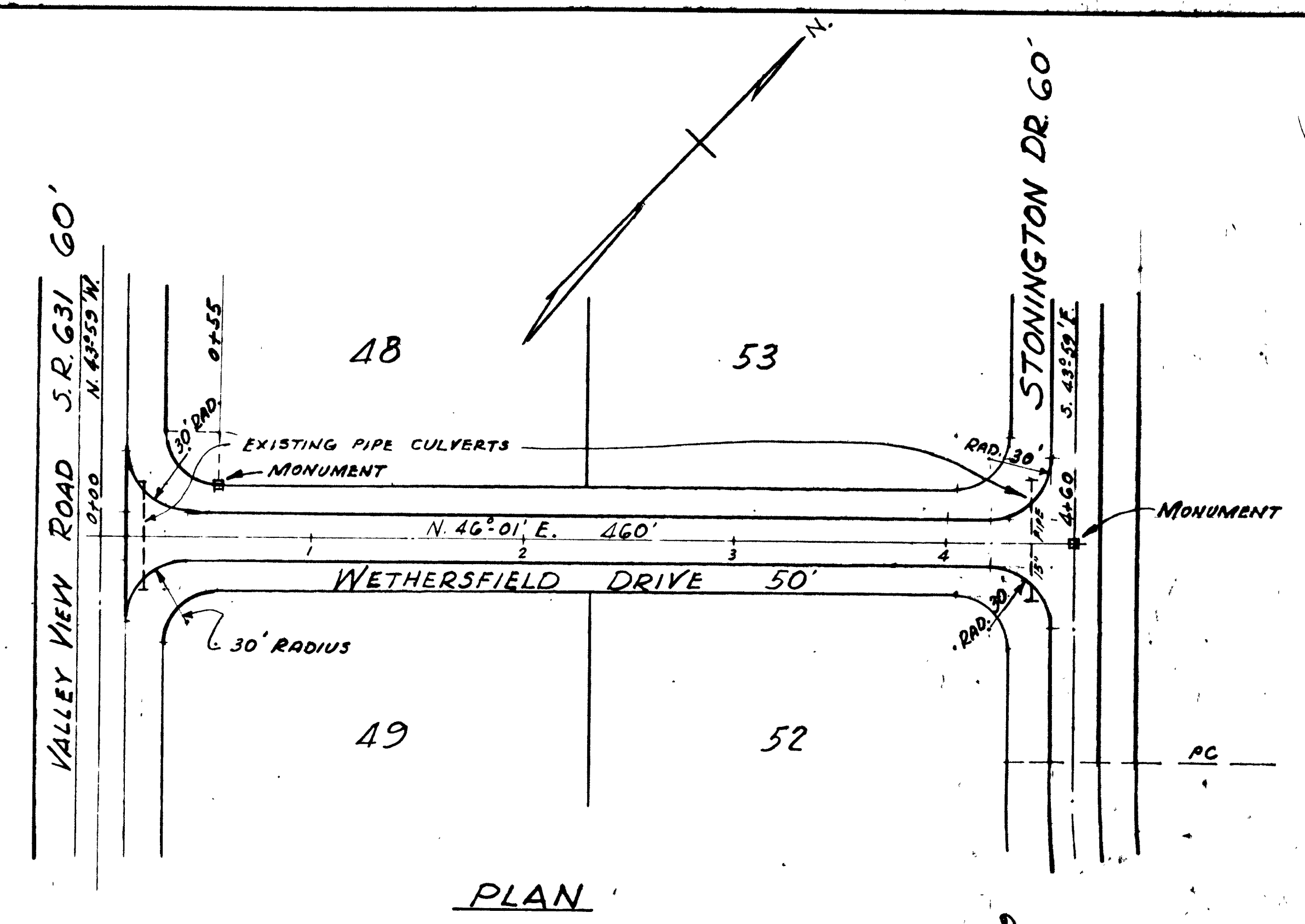


NOTE:
 MONUMENTS TO BE SET AT LOCATIONS SHOWN
 MONUMENTS IN PAVEMENT TO BE ENCLOSED IN METAL BOX AT THE SURFACE
 MONUMENT BOXES TO BE SET PRIOR TO LAYING TOP COURSE OF PAVEMENT



APPROVED *Ralph Van Brimmer*
 SUMMIT COUNTY ENGINEER OFFICE
 DATE *Apr. 26 1965*

CONNECTICUT COLONY OF HUDSON
 ROAD IMPROVEMENT PART 2
 STONINGTON DRIVE-GROTON TO WETHERSFIELD
 WETHERSFIELD DRIVE

SCALE HORIZ. 1"=50'
 VERT. 1"=10'
 STOCKMAN AND ASSOCIATES INC.
 FEB, 1965