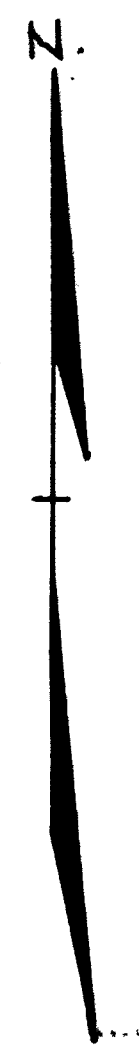
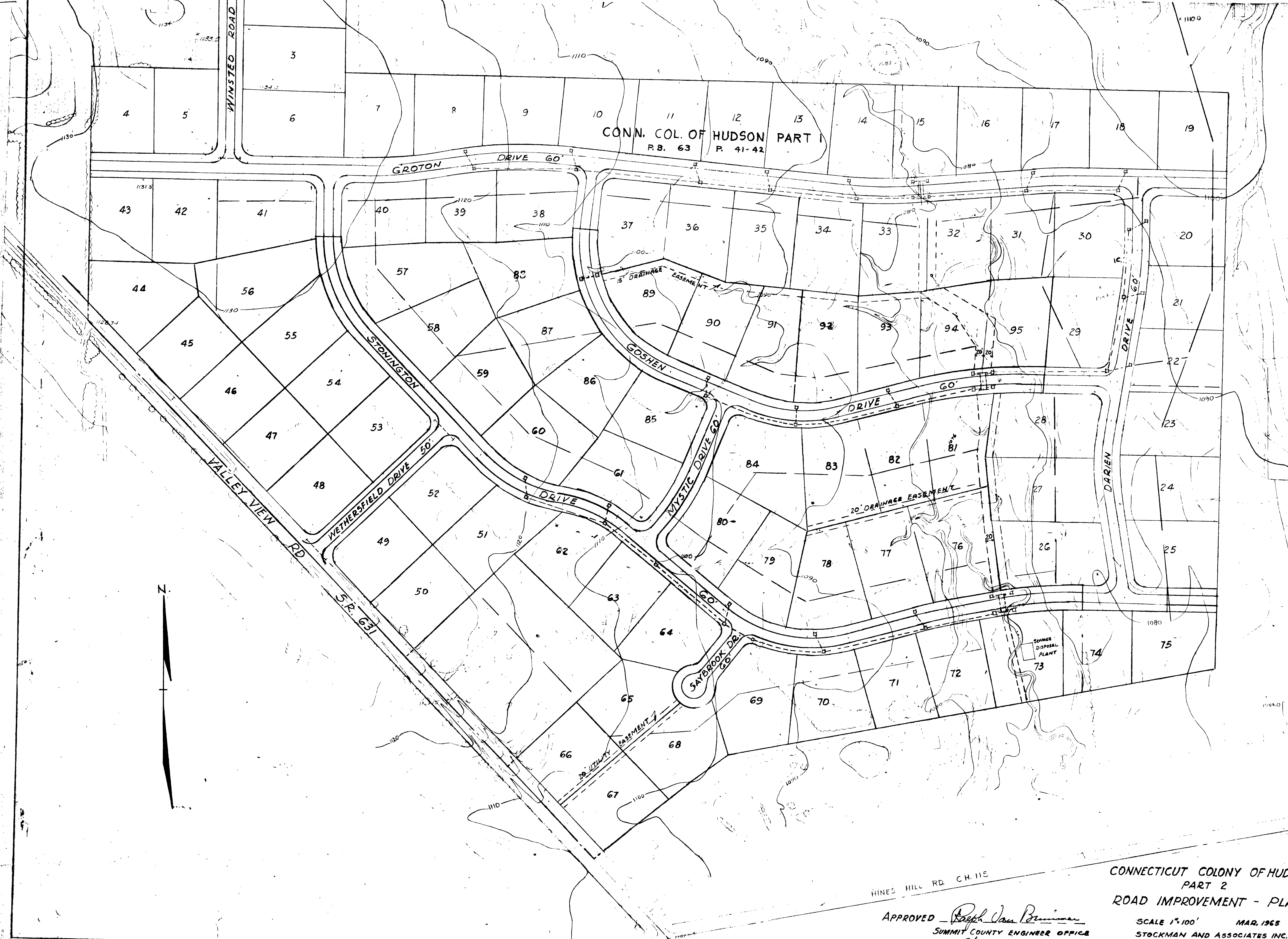


CONN. COL. OF HUDSON PART
P.B. 63 P. 41-42



HINES HILL RD. CH. 115

APPROVED Ralph Van Buren
SUMMIT COUNTY ENGINEER OFFICE
DATE Apr. 26 1965

CONNECTICUT COLONY OF HUDSON
PART 2
ROAD IMPROVEMENT - PLAN

SCALE 1"=100' MAR. 1965
STOCKMAN AND ASSOCIATES INC.