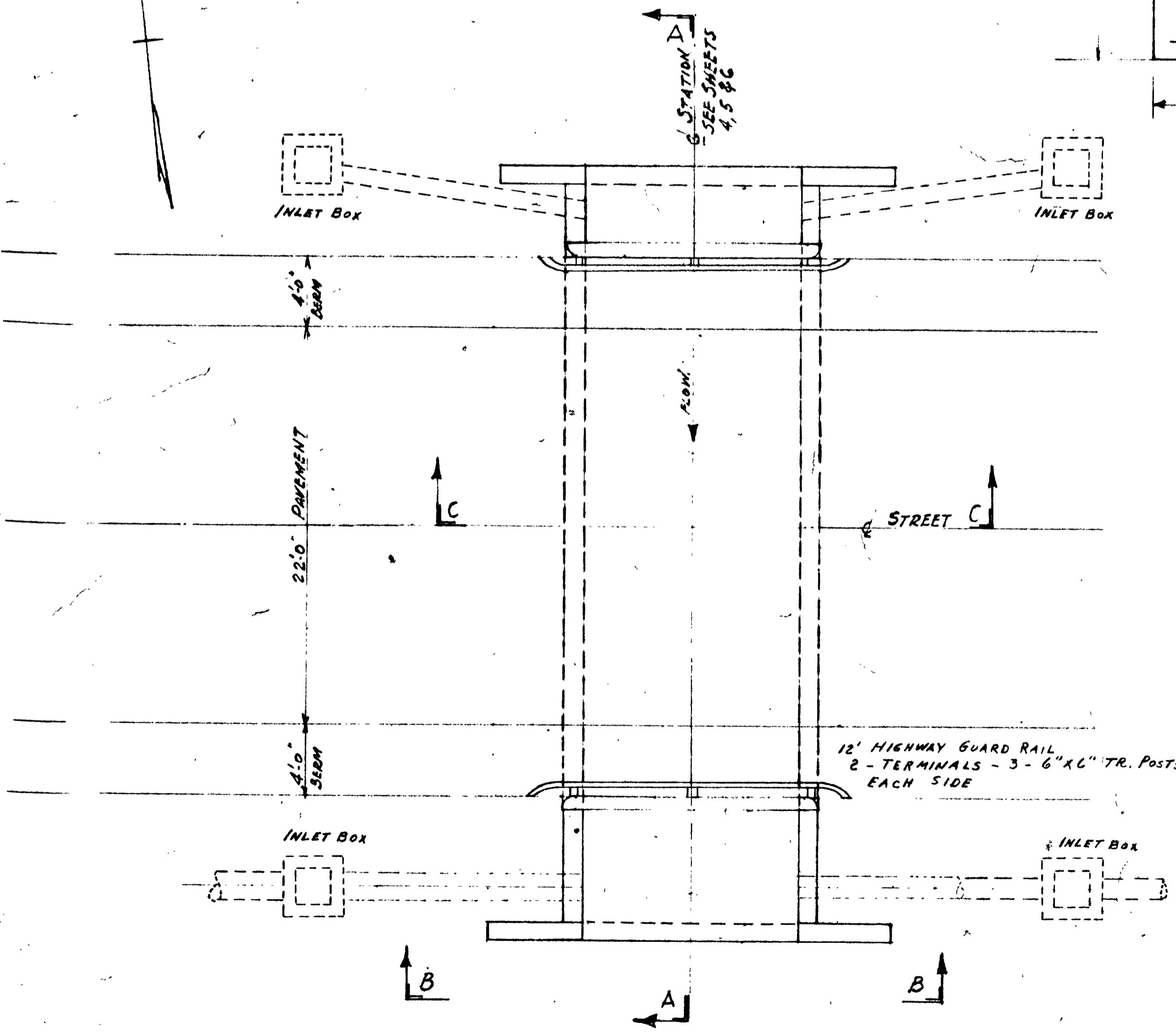


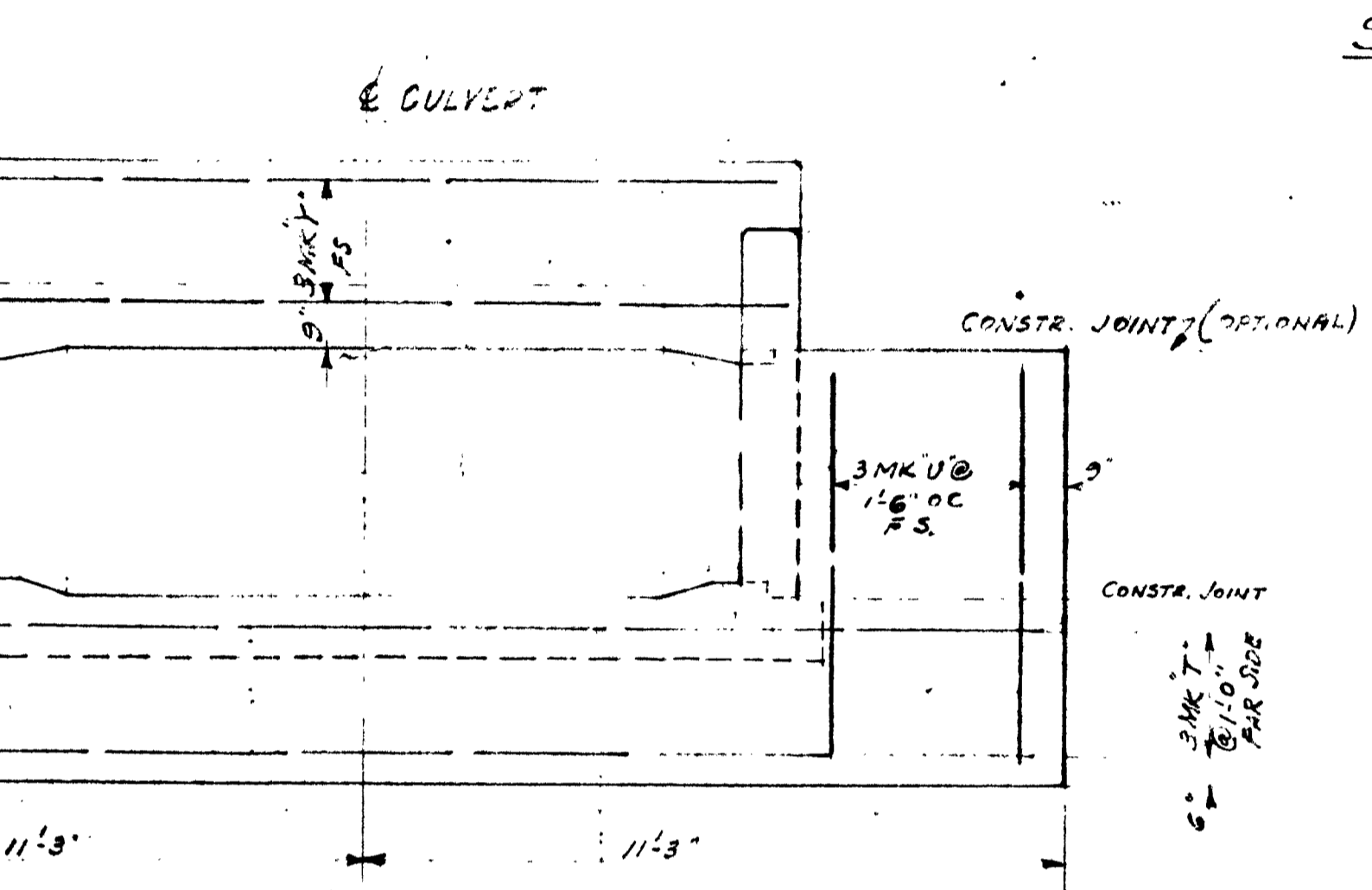
TYPICAL SECTION - ROADS

NOTE
 Inlets shall be in accordance with specification set forth under Summit County Standard Inlet No 1 dated Jan 1959
 Sod or Pave all gutters over 1.0% grade
 Seed Right-of-Way except where paved sodded or graveled

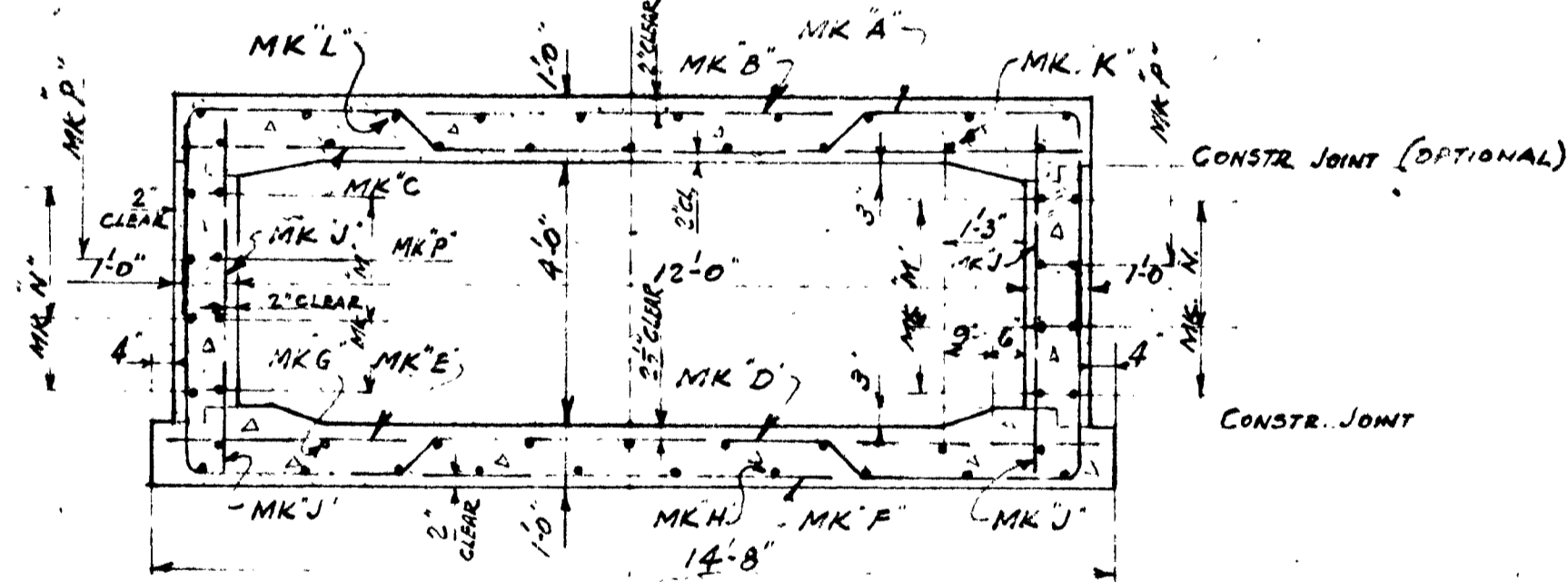
PIPE TO MEET STATE OF OHIO SPECIFICATIONS AS FOLLOWS: (Pipe Class changes to be made at inlet boxes)
 CONCRETE PIPE
 In ditches 12" to 18": M 6.5 (a); M 6.5 (b) at street crossings
 In ditches 24" and over: M 6.6 (b)
 In roads 12" to 18": M 6.5 (b)
 In roads 24" and over: M 6.6 (b)
 Use jute in Bell & Spigot joints
 CORRUGATED METAL PIPE, M 6.4 (a)
 Pipe under pavement & berms to be backfilled with porous material and completely compacted



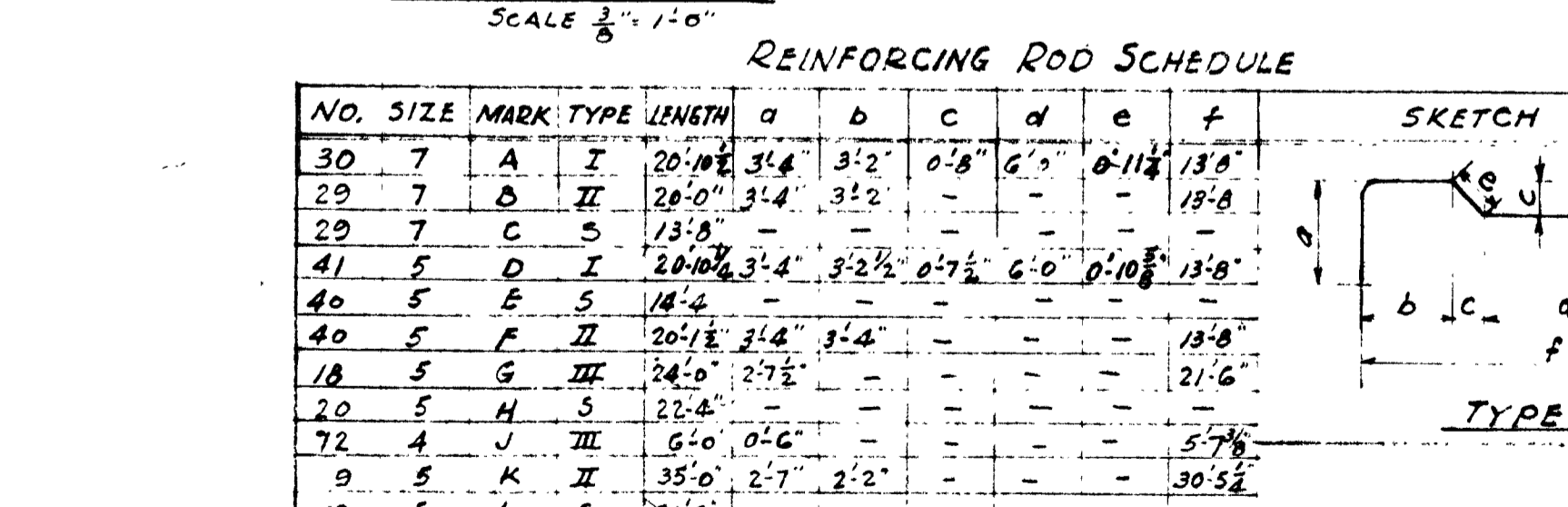
PLAN SCALE 3/16" = 1'-0"



SECTION A-A SCALE 3/16" = 1'-0"

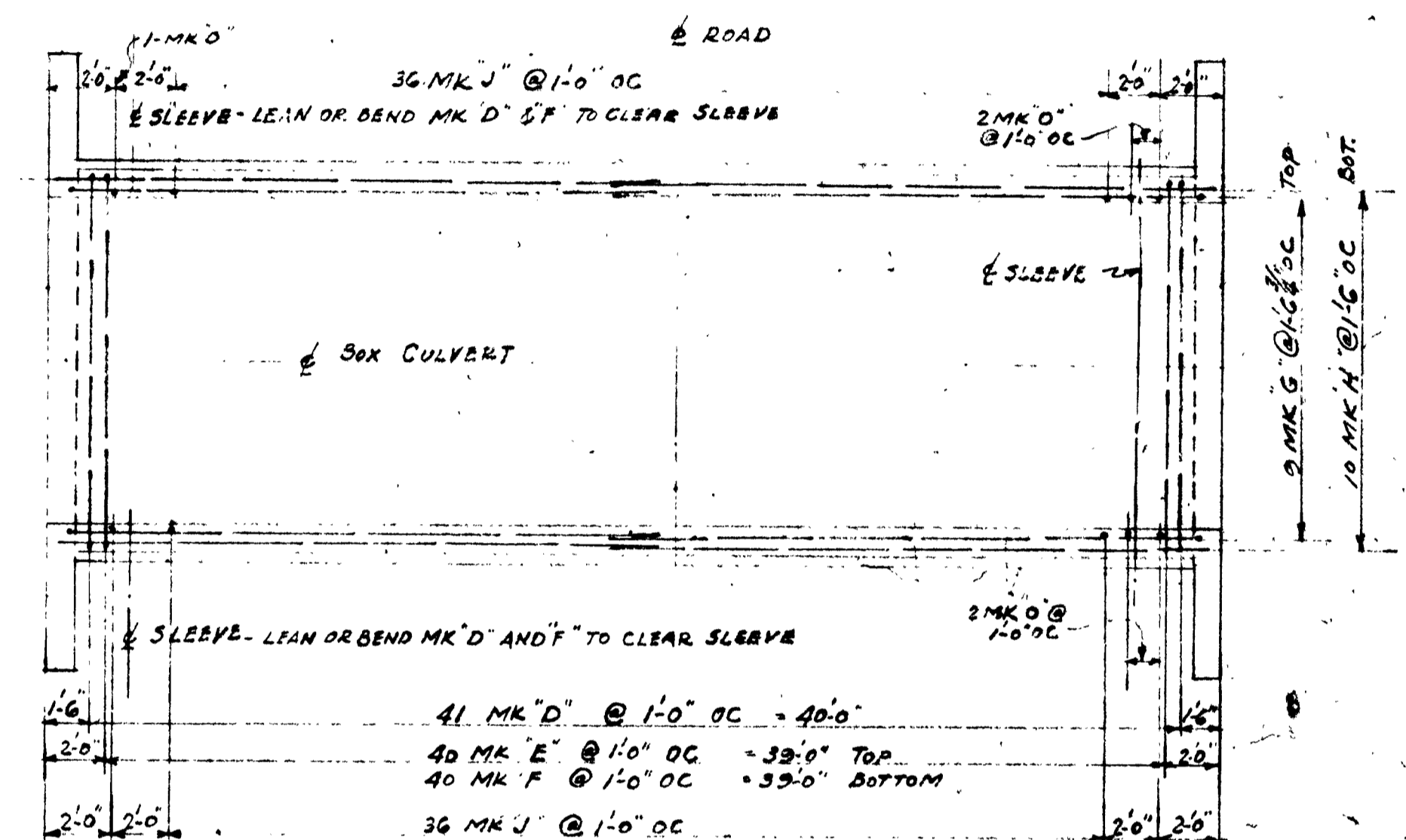


SECTION B-B SCALE 3/16" = 1'-0"

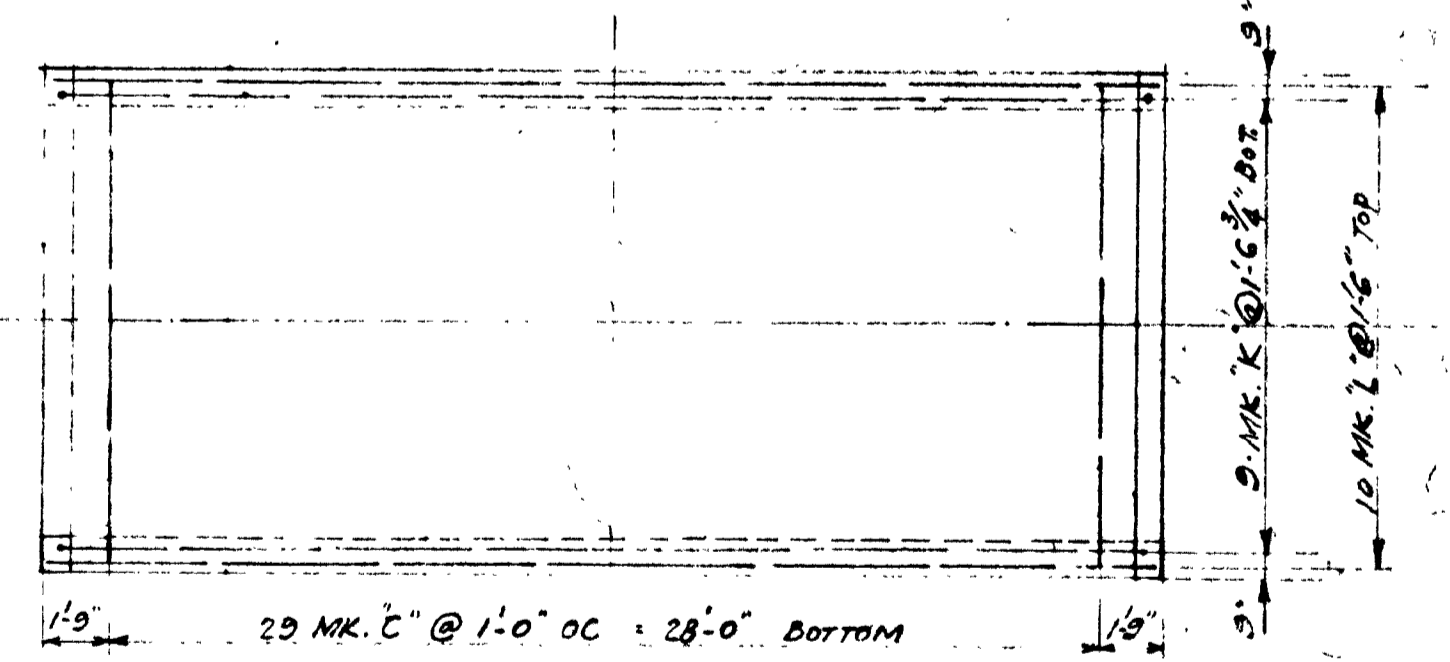


SECTION C-C SCALE 3/16" = 1'-0"

SECTION A-A SCALE 3/16" = 1'-0"



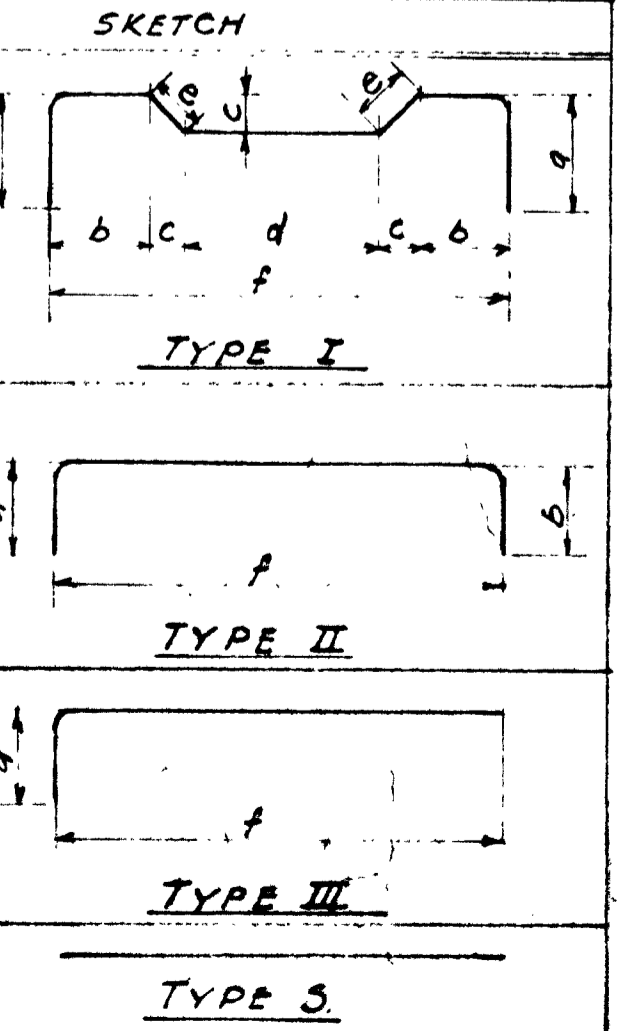
PLAN OF BOTTOM SLAB SCALE 3/16" = 1'-0"



PLAN OF TOP SLAB SCALE 3/16" = 1'-0"

REINFORCING ROD SCHEDULE

NO.	SIZE	MARK	TYPE	LENGTH	a	b	c	d	e	f
30	7	A	I	20'-0"	3'-4"	3'-2"	0'-8"	6'-0"	0'-11 1/2"	13'-0"
29	7	B	II	20'-0"	3'-4"	3'-2"	0'-8"	6'-0"	0'-11 1/2"	13'-0"
28	7	C	S	13'-8"	-	-	-	-	-	-
41	5	D	I	20'-0"	3'-4"	3'-2"	0'-7 1/2"	6'-0"	0'-10 3/4"	13'-0"
40	5	E	S	14'-4"	-	-	-	-	-	-
40	5	F	II	20'-0"	3'-4"	3'-4"	-	-	-	13'-8"
18	5	G	III	24'-0"	2'-7 1/2"	-	-	-	-	21'-6"
20	5	H	S	22'-4"	-	-	-	-	-	-
72	4	J	III	6'-0"	0'-6"	-	-	-	-	5'-7 1/2"
9	5	K	II	35'-0"	2'-7"	2'-2"	-	-	-	30'-5 1/2"
10	5	L	S	31'-2"	-	-	-	-	-	-
10	5	M	III	26'-2 1/2"	4'-0"	-	-	-	-	21'-6"
10	5	N	S	22'-4"	-	-	-	-	-	-
6	5	O	III	5'-0"	0'-6"	-	-	-	-	4'-8"
12	5	P	S	18'-6"	-	-	-	-	-	-
6	5	R	III	9'-0"	4'-10"	-	-	-	-	4'-10"
2	5	S	S	5'-0"	-	-	-	-	-	-
6	5	T	S	22'-2"	-	-	-	-	-	-
12	5	U	S	6'-8"	-	-	-	-	-	-
2	5	V	S	8'-0"	-	-	-	-	-	-
8	5	W	S	4'-2"	-	-	-	-	-	-
2	5	X	S	3'-0"	-	-	-	-	-	-
6	5	Y	S	13'-8"	-	-	-	-	-	-
20	5	Z	S	6'-0"	-	-	-	-	-	-



BOX CULVERT DATA

FLOW LINE EL.	SIZE AND EL.	SEWER OPENINGS
GROTON DRIVE	GOSHEN DRIVE	SPRINGTOWN DR.
ELBY.	ELEV.	ELEV.
A 1078.27	1073.77	1069.27
B 1078.30	1074.00	1069.50
C 1078.70	1074.20	1069.70
D 1080.25	1076.30	1071.43
E 1080.25	1076.48	1071.28
F 1080.70	1076.30	1072.41
G 1080.70	1076.70	1072.28

SUMMIT COUNTY ENGINEER OFFICE
 APPROVED BY *Ralph Van Buren*
 DATE Apr. 26, 1965

NOTE:
 1. BEVEL ALL EXPOSED EDGES (3/4")
 2. CONCRETE TO DEVELOP AN ULTIMATE COMPRESSIVE STRENGTH OF 3000 PER SQ. IN. AT 28 DAYS

CONNECTICUT COLONY OF HUDSON
 ROAD IMPROVEMENTS PART 2
 TYPICAL ROAD CROSS SECTION
 12' x 4' CONCRETE BOX CULVERT
 PLAN, SECTIONS AND DETAILS

SCALE AS SHOWN
 MAR. 1965
 STOCKMAN AND ASSOCIATES - ENGINEERS & SURVEYORS