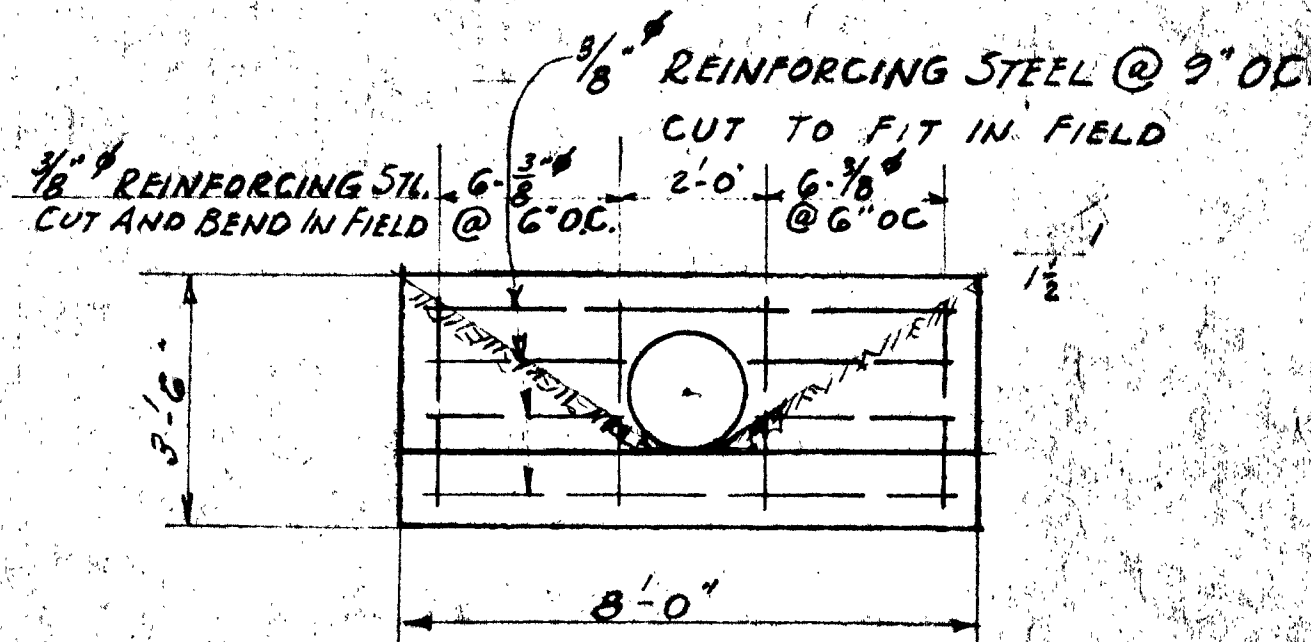
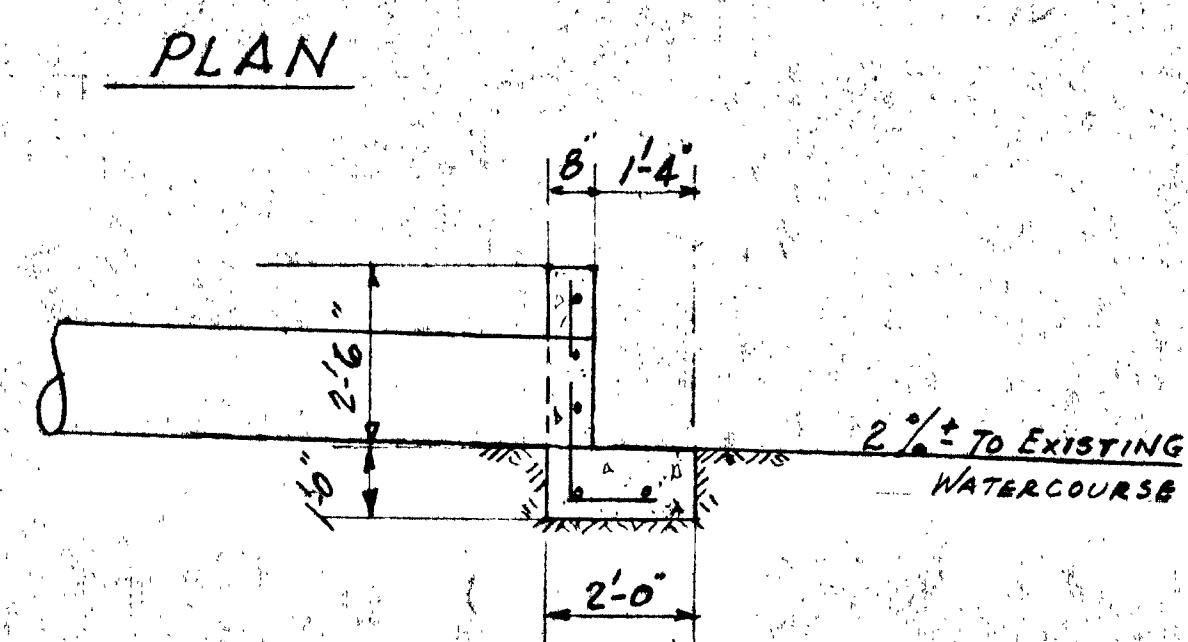
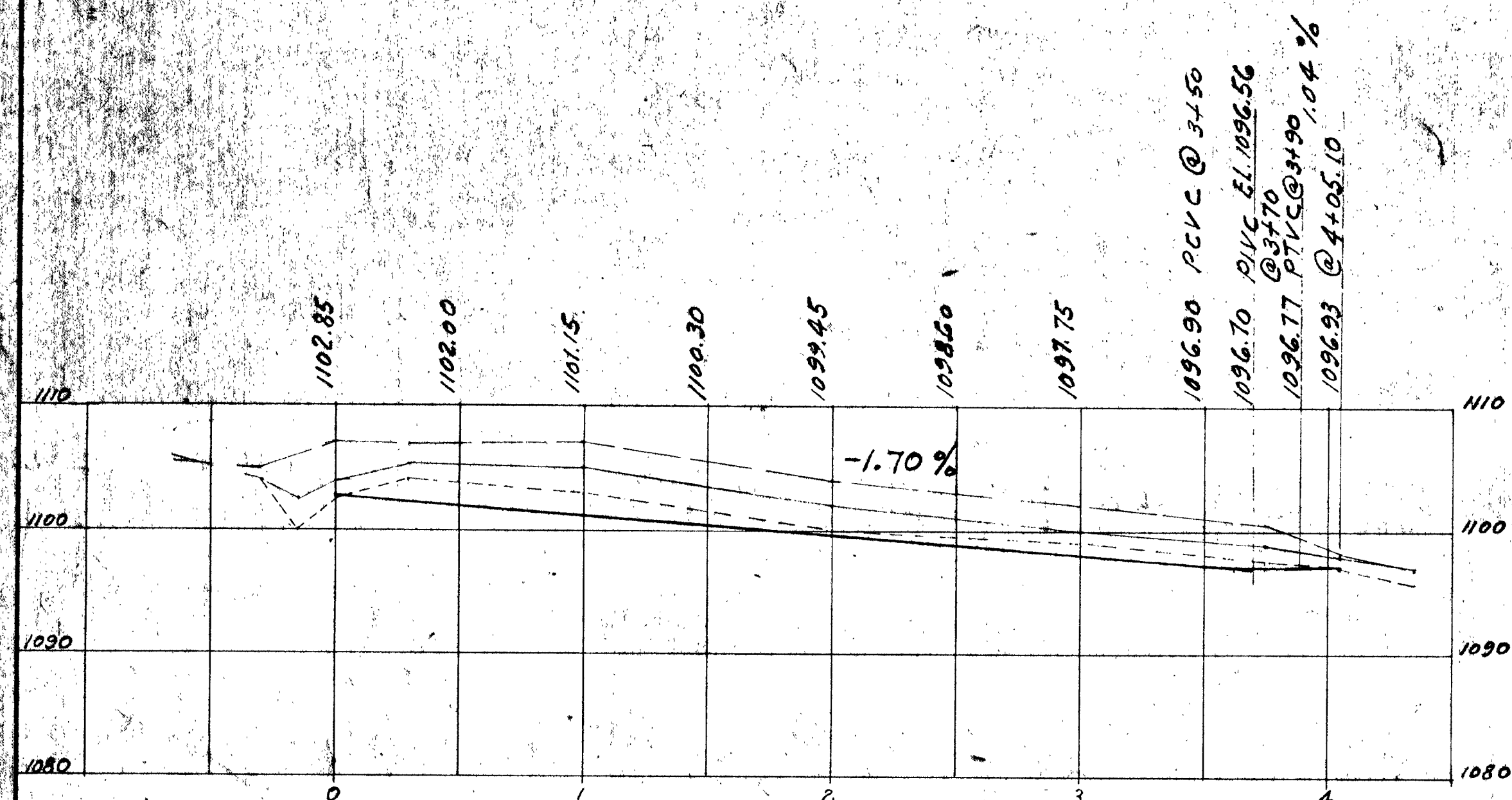


Note
 3/4" CHAMFER ALL EXPOSED CORNERS
 3000 #00 CONCRETE



HEADWALL AND APRON
 END OF CULVERT 2+75 GOSHEN DR.
 SCALE 3/8" = 1'-0"



CONNECTICUT COLONY OF HUDSON
 ROAD IMPROVEMENTS PART 2
 MYSTIC DRIVE STATION 0+00 TO 4+05.42

APPROVED *Ralph Van Buren*
 SUMMIT COUNTY ENGINEER OFFICE
 DATE Feb. 26 1965

SCALE - AS SHOWN
 STOCKMAN AND ASSOCIATES INC.
 ENGINEERS AND SURVEYORS
 FEB. 1965