

CONNECTICUT COLONY OF HUDSON PART 2 PART OF LOT 84 HUDSON TOWNSHIP SUMMIT COUNTY, OHIO MADE FOR CONNECTICUT COLONY INVESTMENT INC.

CURVE DATA P.B. 67 PG. 37

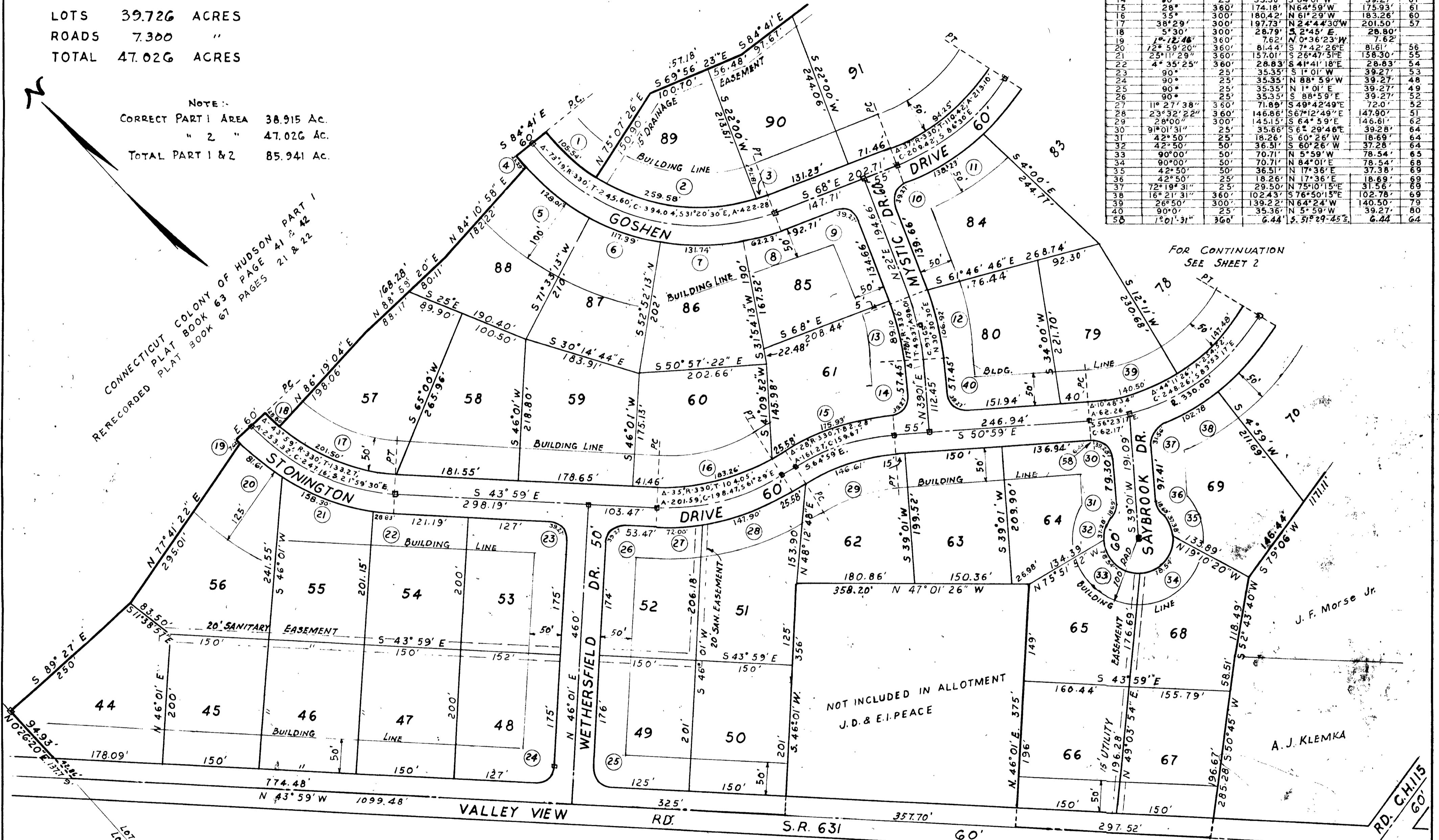
MARK	Δ	RADIUS	CHORD	BEARING	ARC	LOT NO
1	20°09'26"	300'	105.50'	S 4°45'43"E	105.54'	89
2	46°34'34"	300'	251.56'	N 39°37'43"W	259.58'	89
3	3°35'	300'	18.75'	N 66°12'30"W	18.76'	90
4	3°23'20"	360'	127.34'	S 8°15'33"E	128.01'	88
5	20°22'27"	360'	116.87'	S 27°47'17"E	117.39'	87
6	18°41'	360'	131'	S 47°36'47"E	131.74'	86
7	20°58'	360'	62.15'	S 63°02'53"E	62.23'	85
8	9°54'13"	360'	35.36'	S 23°E	39.27'	85
9	90°	25'	35.36'	S 79°E	39.27'	84
10	22°	360'	137.38'	N 67°E	138.23'	84
11	17°01'	330'	106.52'	S 30°30'30"E	106.92'	80
12	17°01'	300'	88.77'	S 84°01'W	89.10'	61
13	90°	25'	35.36'	S 84°01'W	39.27'	61
14	28°	360'	174.18'	N 64°59'W	175.93'	61
15	35°	300'	180.42'	N 61°29'W	183.26'	60
16	38°29'	300'	197.73'	N 24°43'30"W	201.50'	57
17	5°30'	300'	28.79'	S 2°45'E	28.80'	57
18	5°30'	360'	7.62'	N 0°36'23"W	7.62'	56
19	1°12'46"	360'	81.44'	S 7°42'26"E	81.61'	56
20	25°11'29"	360'	157.01'	S 26°47'51"E	158.30'	55
21	4°35'25"	360'	28.83'	S 41°41'18"E	28.83'	54
22	90°	25'	35.35'	S 1°01'W	39.27'	53
23	90°	25'	35.35'	N 88°59'W	39.27'	48
24	90°	25'	35.35'	N 1°01'E	39.27'	49
25	90°	25'	35.35'	S 88°59'E	39.27'	52
26	11°27'38"	360'	71.89'	S 40°42'49"E	72.0'	52
28	23°32'22"	360'	146.86'	S 67°12'49"E	147.90'	51
29	28°00"	300'	145.15'	S 64°59'E	146.61'	62
30	91°01'31"	25'	35.66'	S 6°29'46"E	39.28'	64
31	42°50'	25'	18.26'	S 60°26'W	18.69'	64
32	42°50'	50'	36.51'	S 60°26'W	37.28'	64
33	90°00'	50'	70.71'	N 5°59'W	78.54'	65
34	90°00'	50'	70.71'	N 84°01'E	78.54'	68
35	42°50'	50'	36.51'	N 17°36'E	37.38'	69
36	42°50'	25'	18.26'	N 17°36'E	18.69'	69
37	72°19'31"	25'	29.50'	N 75°10'15"E	31.56'	69
38	18°21'31"	360'	102.43'	S 76°50'15"E	102.78'	69
39	26°50'	300'	136.22'	N 64°24'W	140.50'	79
40	90°01'	360'	6.44'	S 5°29'45"E	6.44'	64

AREA
 LOTS 39.726 ACRES
 ROADS 7.300 "
 TOTAL 47.026 ACRES

SCALE 1"=100'
 APRIL 1965
 STOCKMAN AND ASSOCIATES INC KENT, OHIO

NOTE:
 CORRECT PART 1 AREA 38.915 Ac.
 " 2 " 47.026 Ac.
 TOTAL PART 1 & 2 85.941 Ac.

CONNECTICUT COLONY OF HUDSON PART 1
 RERECORDED PLAT BOOK 63 PAGE 41 & 42
 BOOK 67 PAGES 21 & 22



FOR CONTINUATION
 SEE SHEET 2

MONUMENTS □
 IRON PIPES AT ALL LOT CORNERS

HINES HILL RD. CH. 115
 60'