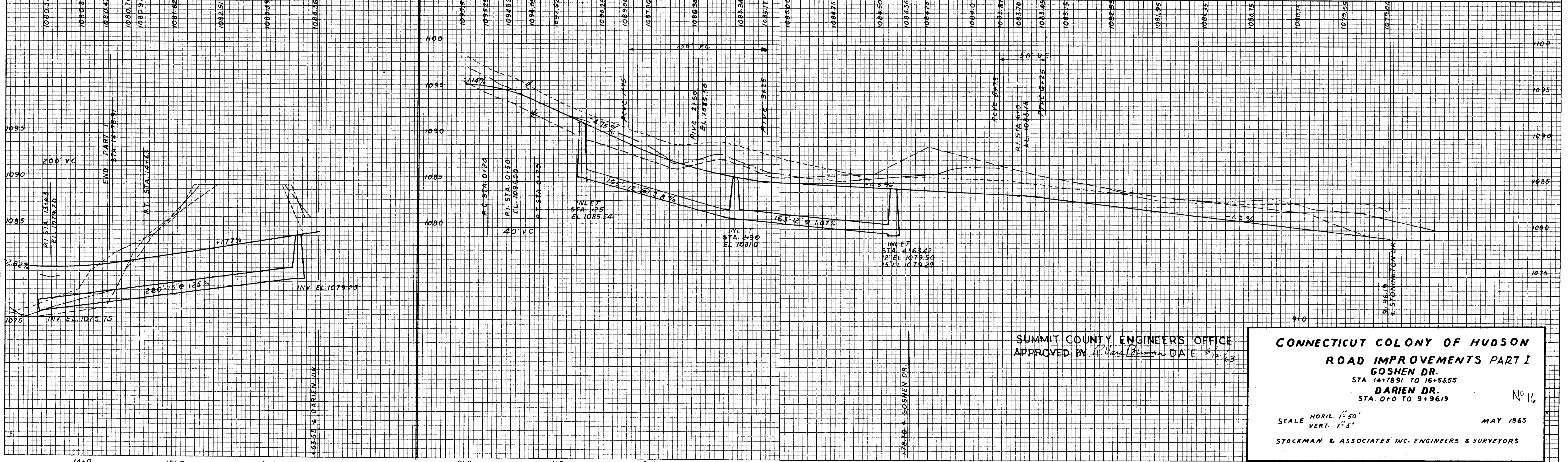
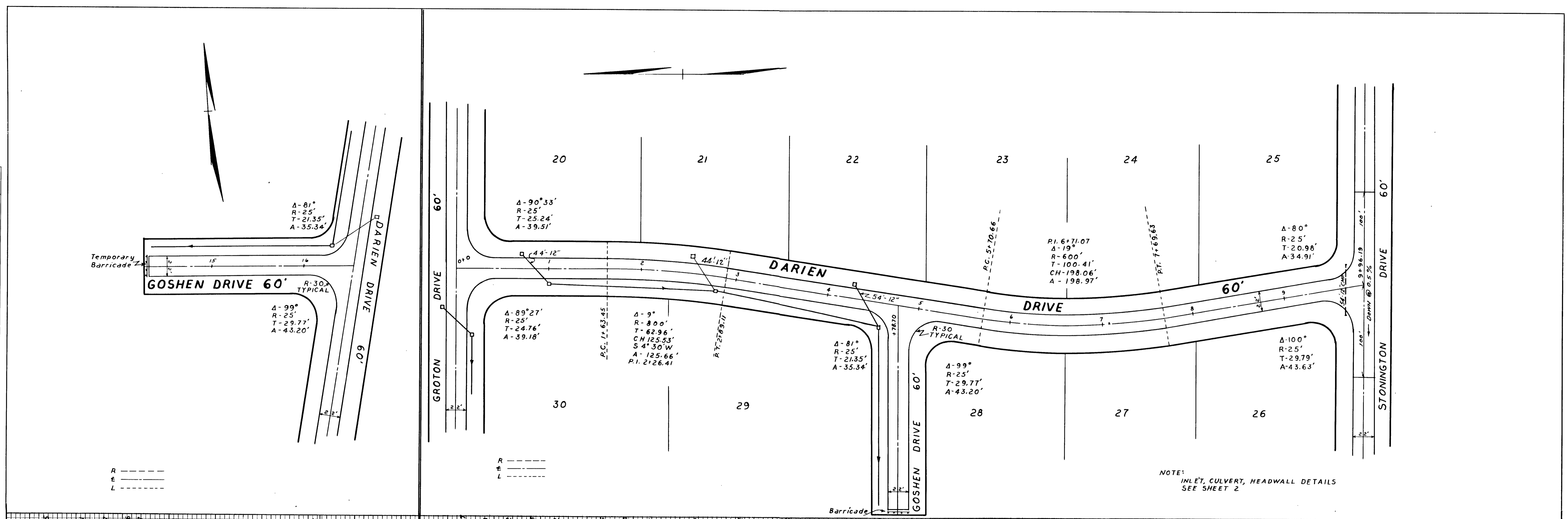


FINAL SURVEY SURVEYED BY DATE
 NOTE BOOK NO. TEMPLATE AREAS CHECKED

ORIGINAL SURVEY SURVEYED BY DATE
 NOTE BOOK NO. TEMPLATE AREAS CHECKED



SUMMIT COUNTY ENGINEERS' OFFICE
 APPROVED BY *[Signature]* DATE *6/12/63*

CONNECTICUT COLONY OF HUDSON
ROAD IMPROVEMENTS PART I
GOSHEN DR.
 STA. 14+78.91 TO 16+53.55
DARIEN DR.
 STA. 0+0 TO 9+96.19

SCALE: HORIZ. 1"=50'
 VERT. 1"=5'

MAY 1963

STOCKMAN & ASSOCIATES INC. ENGINEERS & SURVEYORS

No. 16