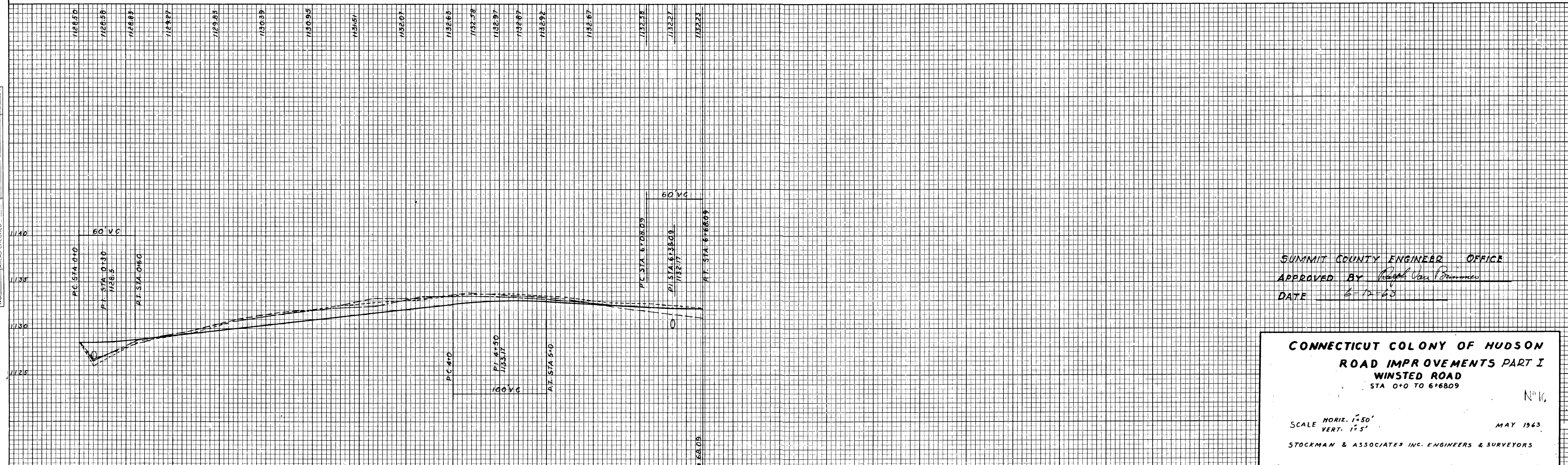
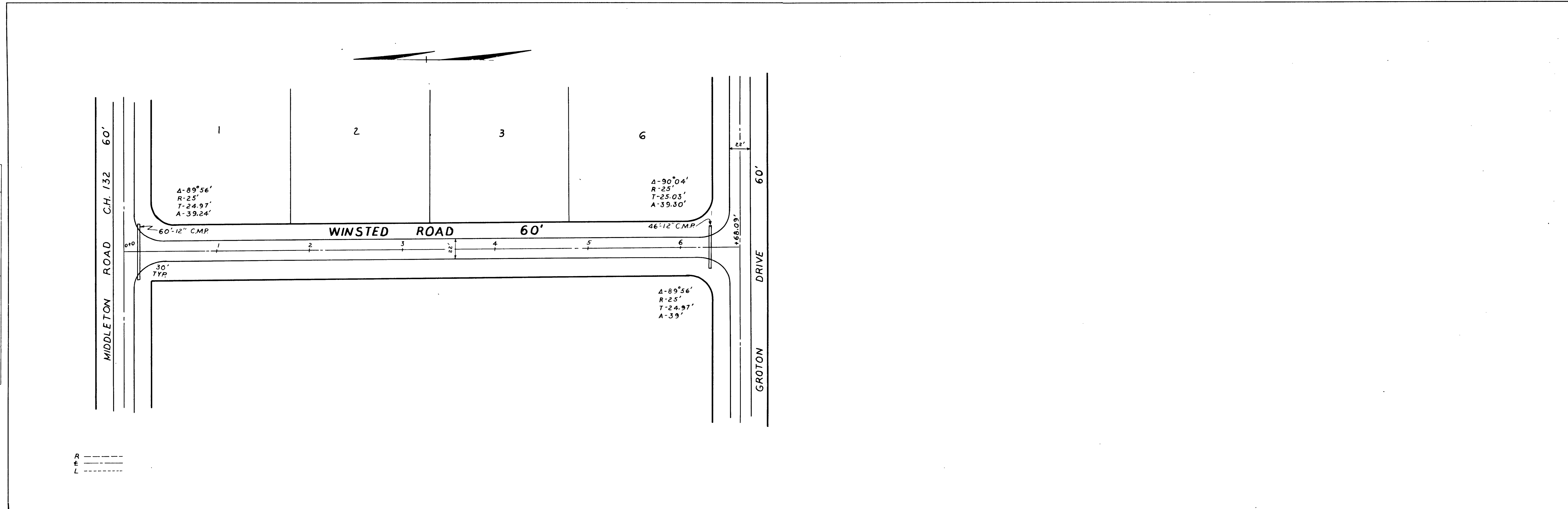


FINAL SURVEY NO. \_\_\_\_\_  
 SURVEYED BY \_\_\_\_\_ DATE \_\_\_\_\_  
 PLOTTED BY \_\_\_\_\_  
 NOTE BOOK NO. \_\_\_\_\_  
 AREAS CHECKED \_\_\_\_\_

ORIGINAL SURVEY NO. \_\_\_\_\_  
 SURVEYED BY \_\_\_\_\_ DATE \_\_\_\_\_  
 PLOTTED BY \_\_\_\_\_  
 NOTE BOOK NO. \_\_\_\_\_  
 AREAS CHECKED \_\_\_\_\_



SUMMIT COUNTY ENGINEER OFFICE  
 APPROVED BY *Ralph Van Brimmer*  
 DATE 6-12-63

CONNECTICUT COLONY OF HUDSON  
 ROAD IMPROVEMENTS PART I  
 WINSTED ROAD  
 STA 0+0 TO 6+68.09  
 SCALE HORIZ. 1"=50'  
 VERT. 1"=5'  
 MAY 1963  
 STOCKMAN & ASSOCIATES INC. ENGINEERS & SURVEYORS