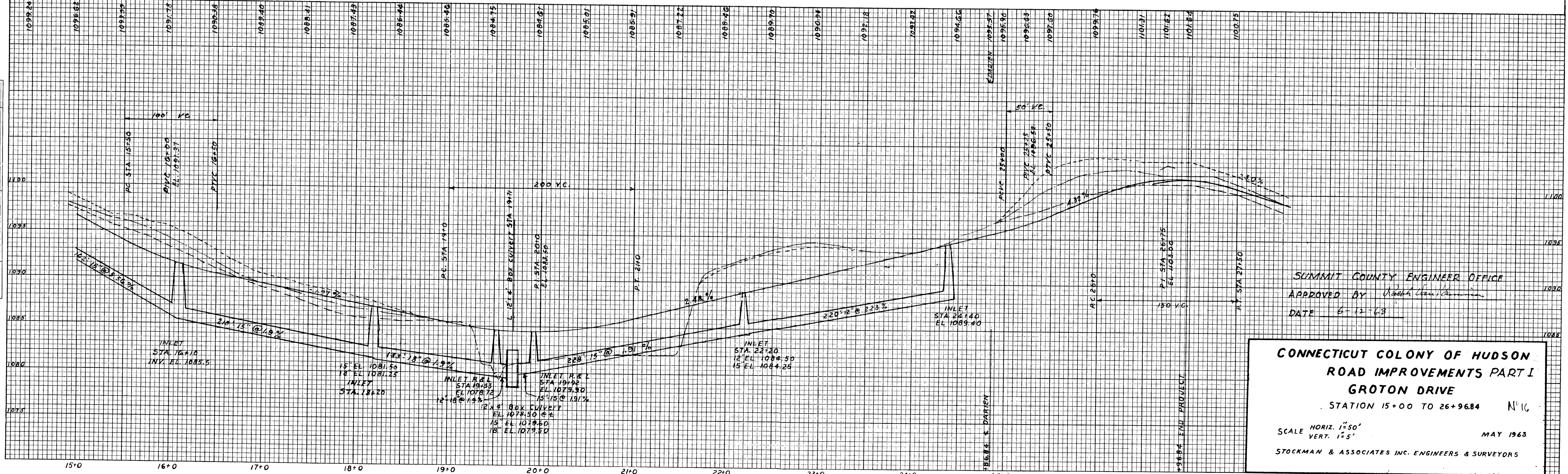
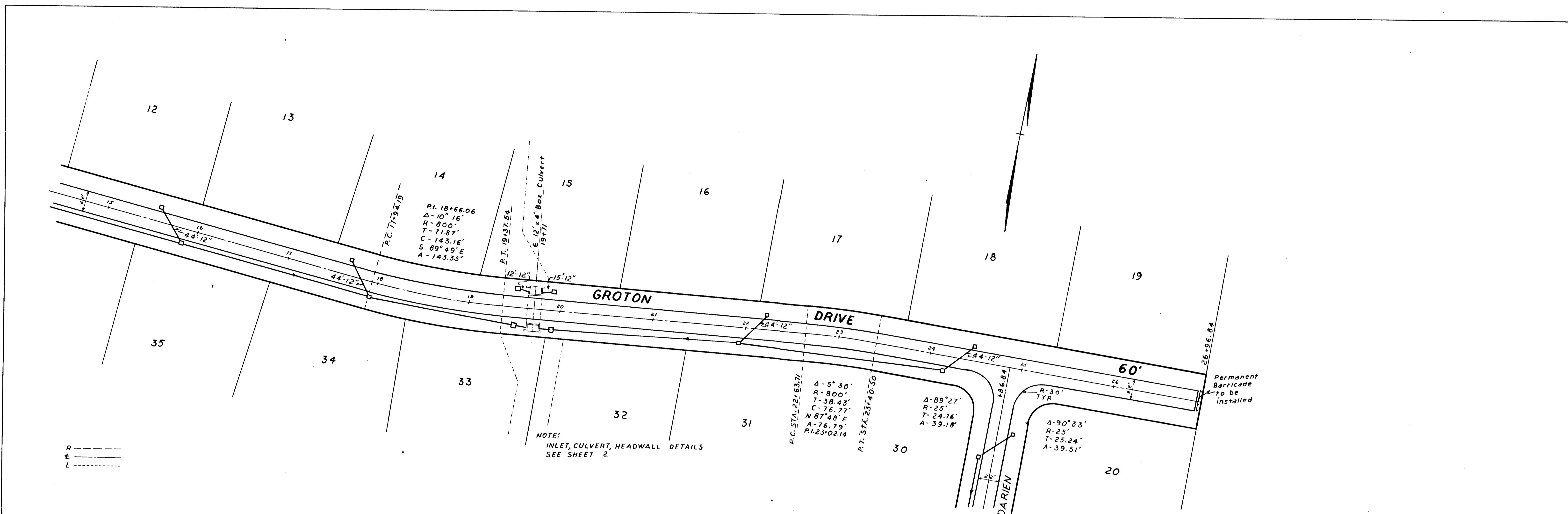


FINAL SURVEY BY DATE  
 SURVEYED PLOTTED  
 NOTE BOOK NO. DATE  
 AREAS CHECKED

ORIGINAL SURVEY BY DATE  
 SURVEYED PLOTTED  
 NOTE BOOK NO. DATE  
 AREAS CHECKED



SUMMIT COUNTY ENGINEER OFFICE  
 APPROVED BY *Robert C. ...*  
 DATE 6-12-68

**CONNECTICUT COLONY OF HUDSON**  
**ROAD IMPROVEMENTS PART I**  
**GROTON DRIVE**  
 STATION 15+00 TO 26+96.84 N<sup>o</sup> 16  
 SCALE HORIZ. 1"=50'  
 VERT. 1"=5'  
 MAY 1963  
 STOCKMAN & ASSOCIATES INC. ENGINEERS & SURVEYORS