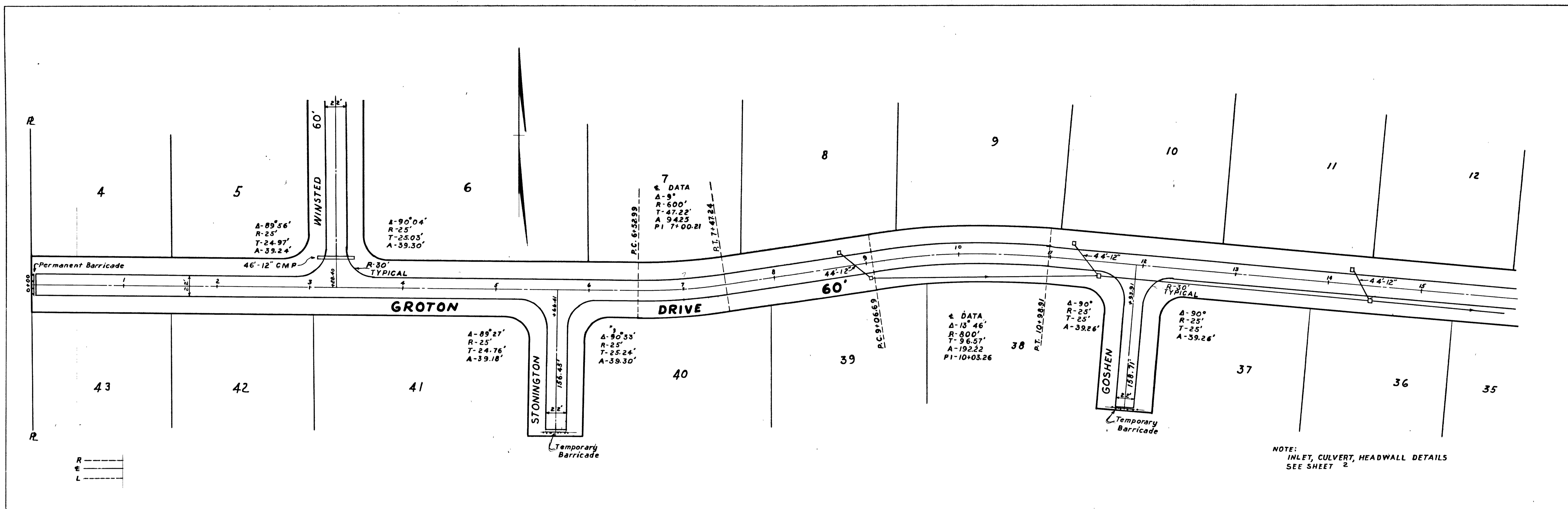
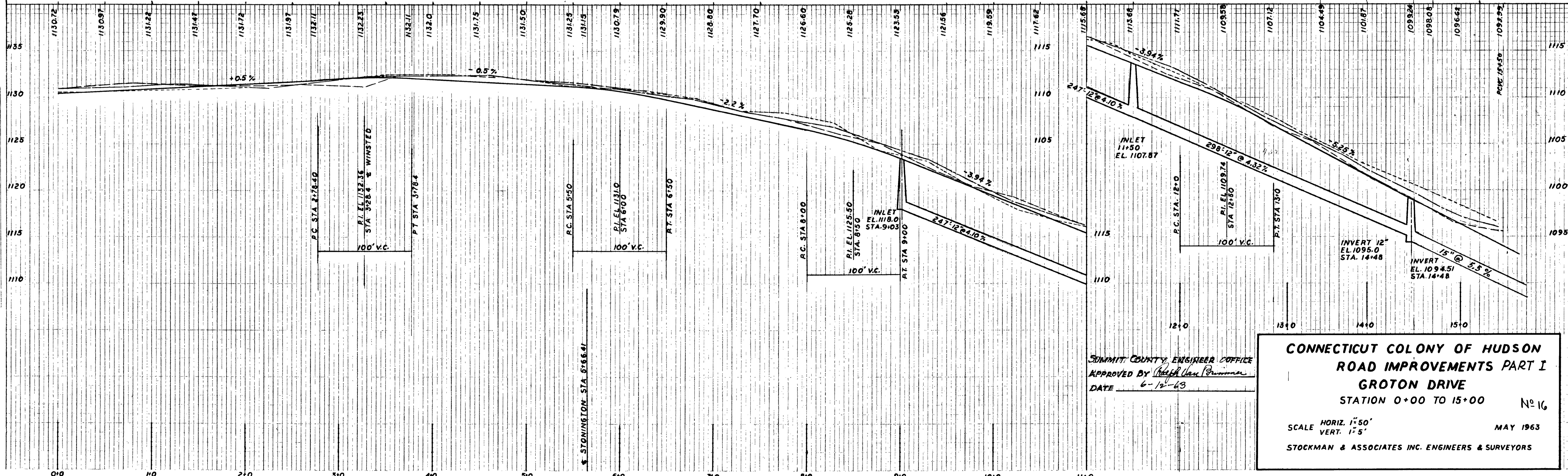


FINAL SURVEY DATE
 SURVEYED BY
 REVISED BY
 NOTE BOOK NO.
 AREAS CHECKED
 NO.



NOTE:
 INLET, CULVERT, HEADWALL DETAILS
 SEE SHEET 2

ORIGINAL SURVEY DATE
 SURVEYED BY
 REVISED BY
 NOTE BOOK NO.
 AREAS CHECKED
 NO.



SUMMIT COUNTY ENGINEER OFFICE
 APPROVED BY *Heath Van Brimmer*
 DATE 6-19-63

CONNECTICUT COLONY OF HUDSON ROAD IMPROVEMENTS PART I
GROTON DRIVE
 STATION 0+00 TO 15+00 No. 16

SCALE HORIZ. 1"=50'
 VERT. 1"=5'

MAY 1963
 STOCKMAN & ASSOCIATES INC. ENGINEERS & SURVEYORS