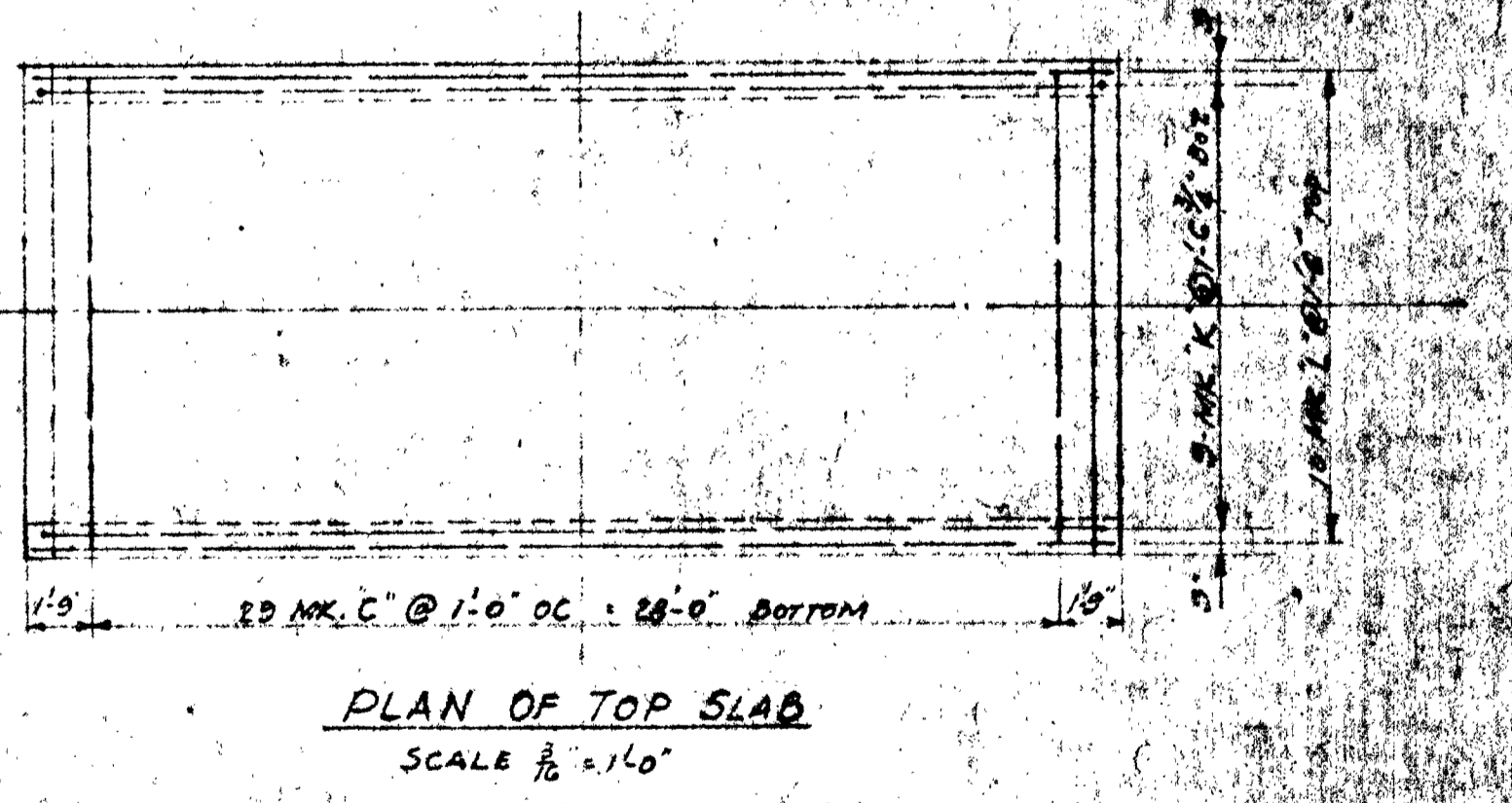
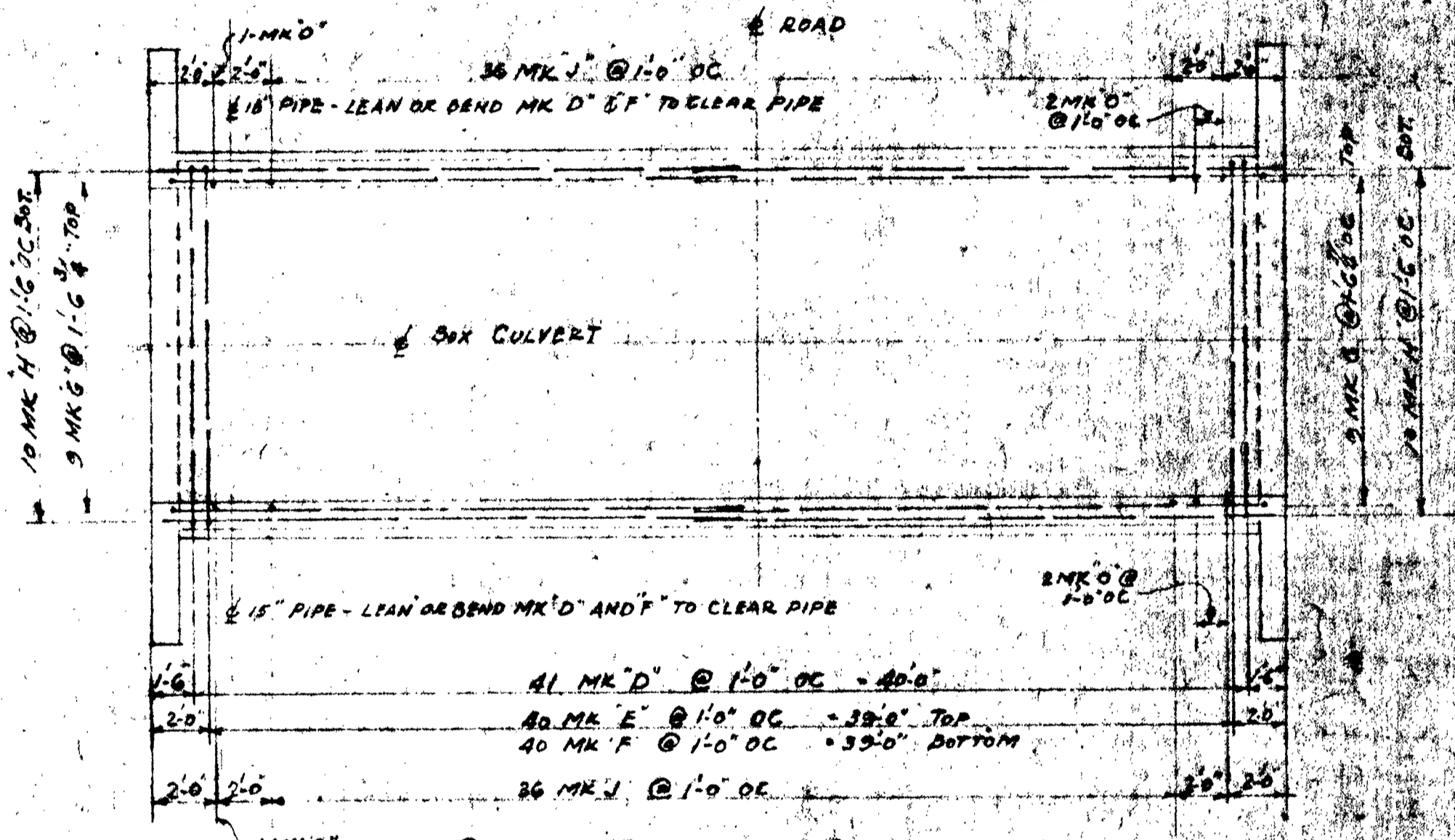
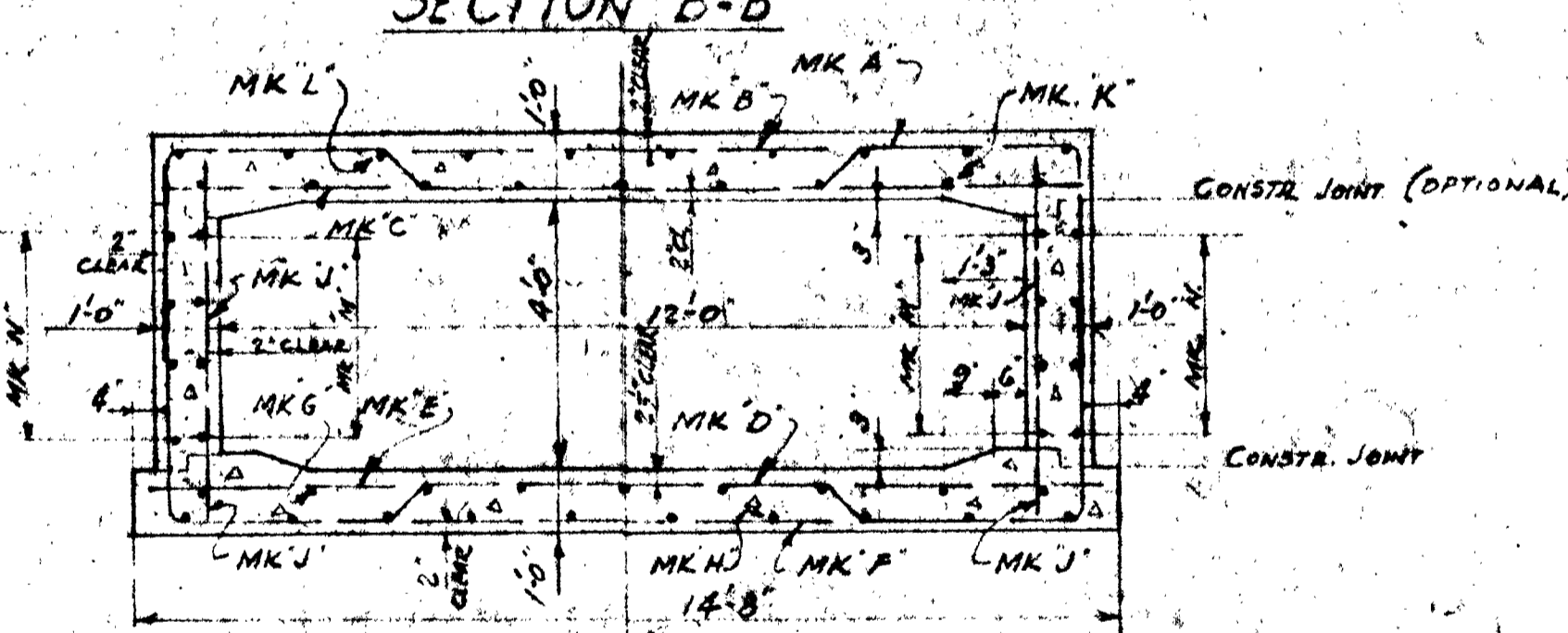
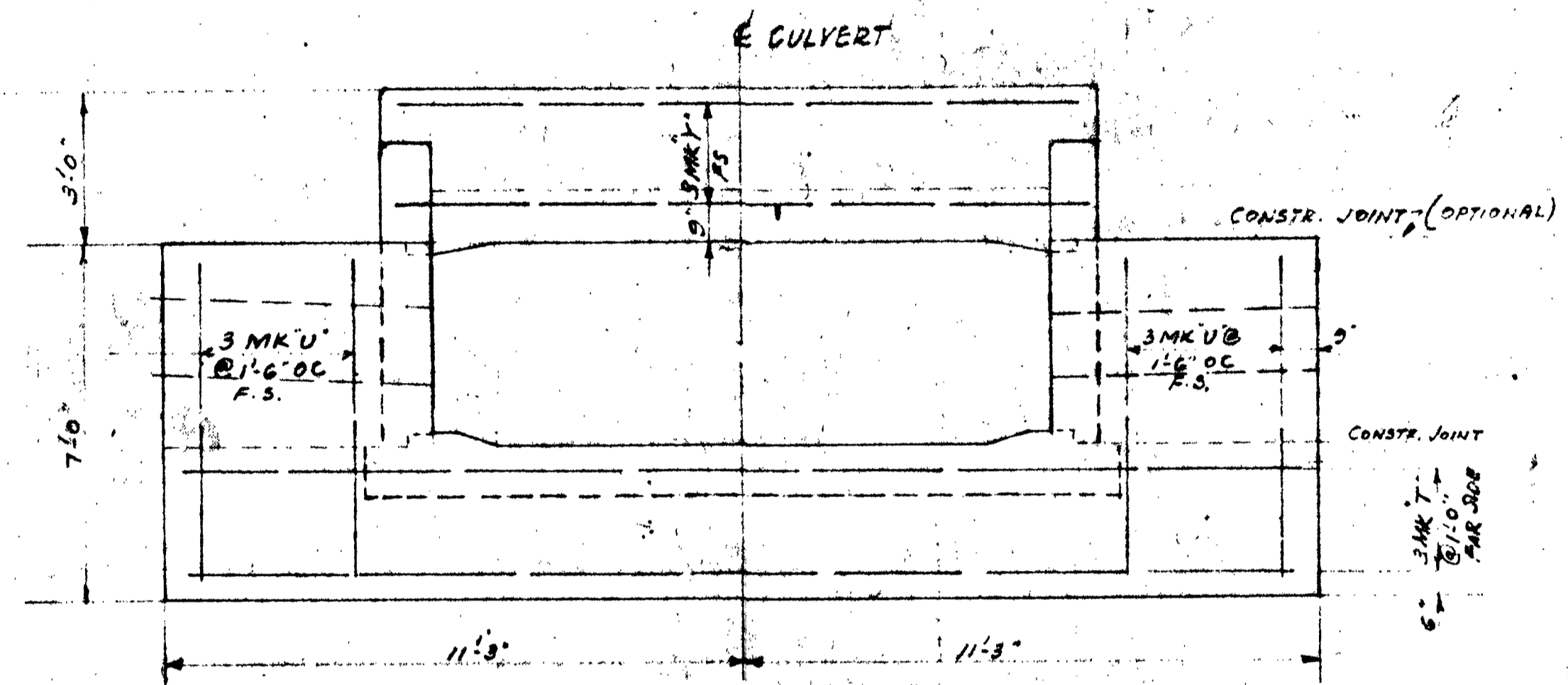
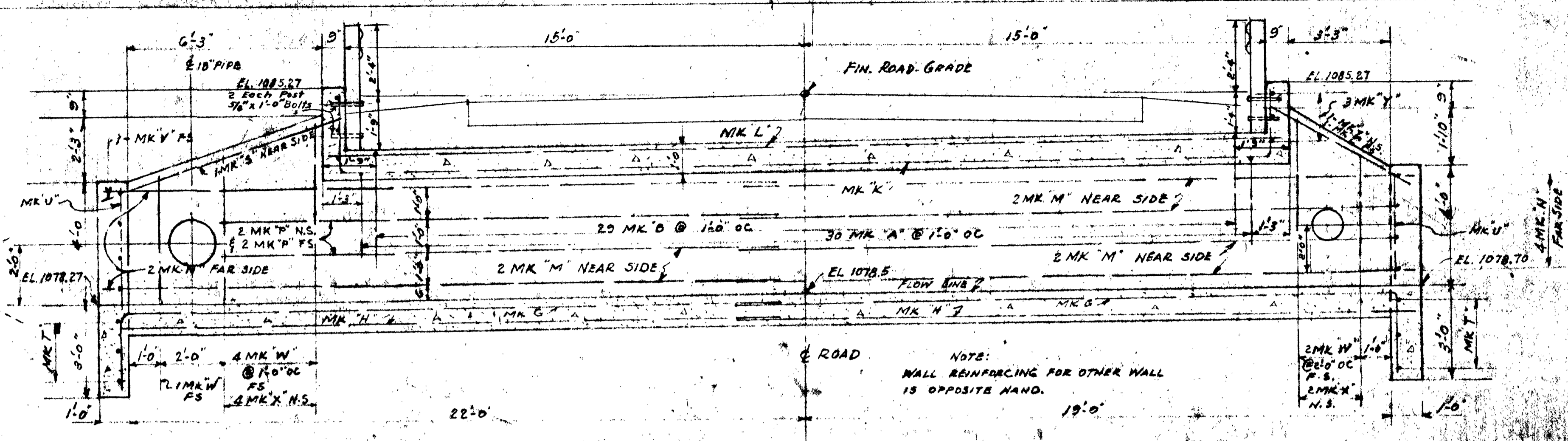


NOTE
Inlets shall be in accordance with specification set forth under Summit County Standard Inlet No. 1 dated Jan 1959
Sod or Pave all gutters over 1.0% grade
Seed Right-of-Way except where paved sodded or graveled

PIPE TO MEET STATE OF OHIO SPECIFICATIONS AS FOLLOWS: (Pipe Class changes to be made at inlet boxes)
CONCRETE PIPE
In ditches 12" to 18": M 6.5 (a); M 6.5 (b) at street crossings
In ditches 24" and over: M 6.6 (a)
In roads 12" to 18": M 6.5 (b)
In roads 24" and over: M 6.6 (b)
Use jute in Bell & Spigot joints
CONCRETE PIPE M 6.4 (a)
Pipe under pavement & berms to be backfilled with porous material and completely compacted



REINFORCING ROD SCHEDULE

NO.	SIZE	AMTK	TYPE	LENGTH	a	b	c	d	e	f	SKETCH
30	7	A	I	20'-11"	3'-4"	3'-2"	0'-8"	6'-0"	11'-9"	18'-0"	TYPE I
29	7	B	II	26'-0"	3'-4"	3'-2"	-	-	-	18'-0"	
28	7	C	S	18'-0"	-	-	-	-	-	-	TYPE II
41	5	D	I	21'-0"	3'-4"	3'-2"	0'-8"	6'-0"	11'-9"	18'-0"	
40	5	E	S	14'-6"	-	-	-	-	-	-	TYPE III
40	5	F	II	20'-11"	3'-4"	3'-2"	-	-	-	18'-0"	
18	5	G	III	24'-0"	2'-0"	2'-0"	-	-	-	21'-6"	TYPE S
20	5	H	S	22'-6"	-	-	-	-	-	-	
12	5	I	III	6'-0"	0'-6"	-	-	-	-	5'-7 1/2"	
9	5	J	II	35'-0"	2'-4"	2'-2"	-	-	-	30'-5 1/2"	
10	5	K	S	21'-6"	-	-	-	-	-	-	
12	5	L	III	28'-0"	4'-0"	-	-	-	-	21'-6"	
12	5	M	S	22'-6"	-	-	-	-	-	-	
6	5	N	III	5'-0"	0'-6"	-	-	-	-	4'-8"	
8	5	O	S	18'-6"	-	-	-	-	-	-	
2	5	P	III	5'-0"	0'-6"	-	-	-	-	4'-10"	
2	5	Q	S	12'-0"	0'-10"	-	-	-	-	7'-6"	
6	5	R	S	22'-2"	-	-	-	-	-	-	
12	5	U	S	6'-8"	-	-	-	-	-	-	
2	5	V	S	8'-0"	-	-	-	-	-	-	
15	5	W	S	4'-8"	-	-	-	-	-	-	
13	5	X	S	3'-0"	-	-	-	-	-	-	
6	5	Y	S	13'-8"	-	-	-	-	-	-	
4	5	Z	S	8'-0"	-	-	-	-	-	-	

NOTE:
1. REVEL ALL EXPOSED EDGES (3/4")
2. CONCRETE TO DEVELOP AN ULTIMATE COMPRESSIVE STRENGTH OF 3000 PER JOINT AT 28 DAYS

CONNECTICUT COLONY OF HUDSON ROAD IMPROVEMENTS PART I
TYPICAL ROAD CROSS SECTION
12'x4' CONCRETE BOX CULVERT
PLAN, SECTIONS AND DETAILS
SCALE AS SHOWN
MAY 1963
STOCKMAN AND ASSOCIATES - ENGINEERS & SURVEYORS

SUMMIT COUNTY ENGINEER OFFICE
APPROVED BY *Ralph Van Brimmer*
DATE 6-12-63