

CONNECTICUT COLONY OF HUDSON PART I

PART OF LOT 84 HUDSON TOWNSHIP SUMMIT COUNTY, OHIO
MADE FOR CONNECTICUT COLONY INVESTMENT INC.

LOTS AREA ACRES
ROADS 43,725
TOTAL 52,290

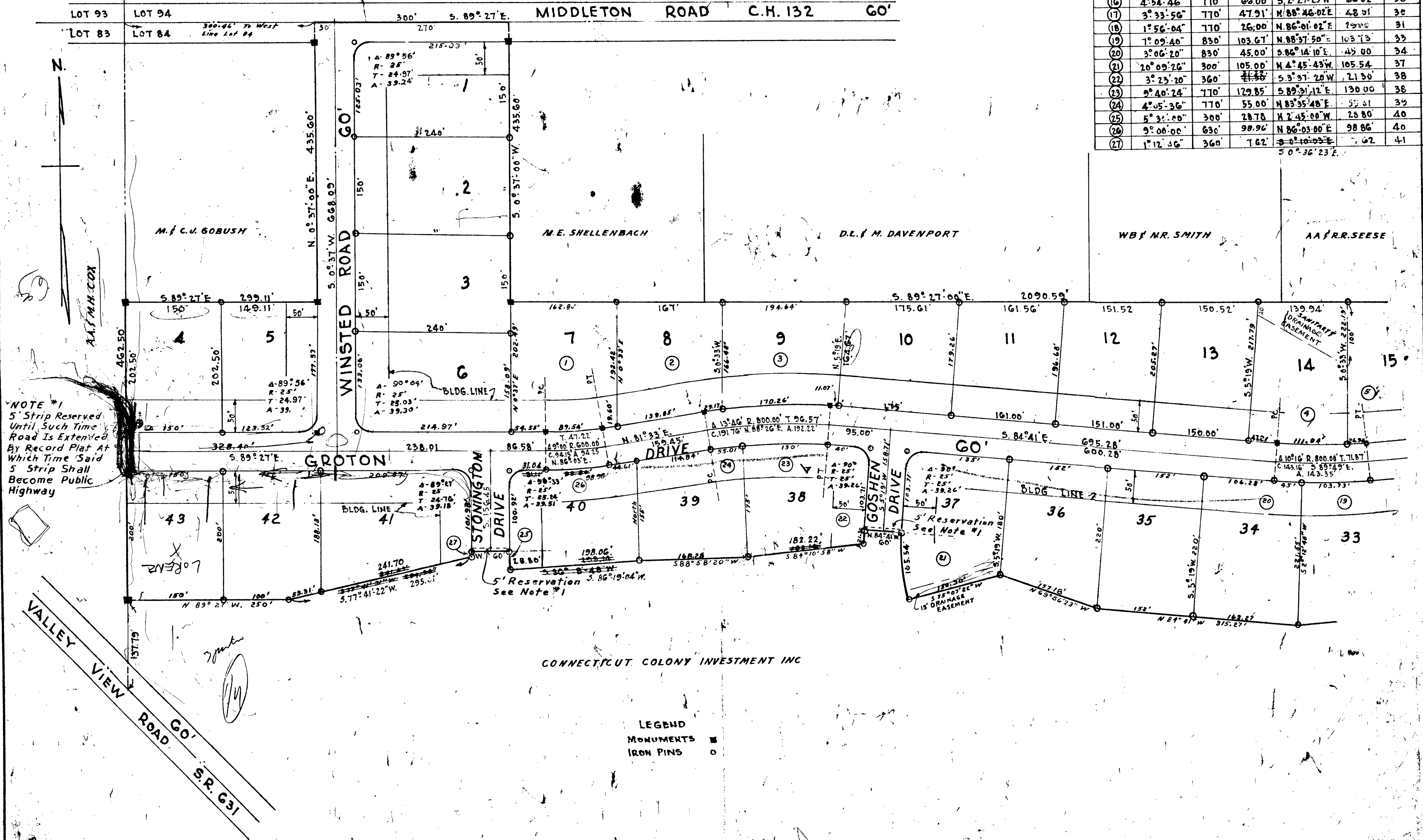
SCALE 1"=100'

MARCH 1963

STOCKMAN AND ASSOCIATES

KENT, OHIO

MARK	Δ	RAD US	CHORD	BEARING	ARC	LOT NO.
1	9° 00' 00"	578'	89.44	S 80° 03' 00" W	89.54	7
2	2° 00' 48"	830'	23.16	S 82° 33' 24" W	23.17	8
3	11° 45' 12"	830'	138.96	S 89° 26' 24" W	170.26	9
4	8° 18' 44"	770'	109.94	N 38° 48' 52" W	111.04	14
5	2° 00' 16"	770'	26.94	N 86° 03' 08" W	26.94	15
6	5° 30' 00"	830'	79.64	S 87° 48' 00" W	79.77	17
7	2° 31' 32"	830'	36.58	N 1° 15' 46" E	36.58	20
8	6° 28' 28"	830'	93.74	N 5° 45' 46" E	93.79	21
9	8° 53' 42"	570'	88.40	N 4° 33' 09" E	88.48	23
10	10° 06' 18"	570'	100.40	N 4° 56' 51" W	101.53	24
11	10° 54' 00"	830'	150.84	S 84° 33' 00" W	157.90	26
12	10° 23' 38"	630'	114.13	S 4° 49' 18" E	114.29	27
13	8° 36' 22"	630'	94.54	S 4° 41' 46" W	94.63	28
14	3° 59' 48"	970'	67.51	N 88° 00' 20" E	67.52	28
15	4° 05' 14"	770'	54.92	S 6° 57' 23" W	54.93	29
16	4° 54' 46"	770'	66.00	S 2° 27' 23" W	66.02	30
17	3° 33' 56"	770'	47.91	N 88° 46' 02" E	48.01	30
18	1° 56' 04"	770'	26.00	N 86° 01' 02" E	26.00	31
19	1° 09' 40"	830'	103.67	N 88° 37' 50" E	103.73	33
20	3° 06' 20"	830'	45.00	S 86° 14' 10" E	45.00	34
21	20° 09' 26"	300'	105.00	N 4° 45' 43" W	105.54	37
22	3° 23' 20"	360'	41.33	S 3° 37' 20" W	41.30	38
23	9° 40' 24"	770'	129.85	S 89° 31' 12" E	130.00	38
24	4° 05' 36"	770'	55.00	N 83° 35' 48" E	55.31	39
25	5° 31' 20"	300'	28.78	N 2° 45' 00" W	28.80	40
26	9° 00' 00"	630'	98.96	N 86° 03' 00" E	98.86	40
27	1° 12' 46"	360'	1.62	S 0° 36' 23" E	1.62	41



NOTE #1
5' Strip Reserved
Until Such Time
Road Is Extended
By Record Plat At
Which Time Said
5' Strip Shall
Become Public
Highway

5' Reservation
See Note #1

LEGEND
MONUMENTS ■
IRON PINS ○