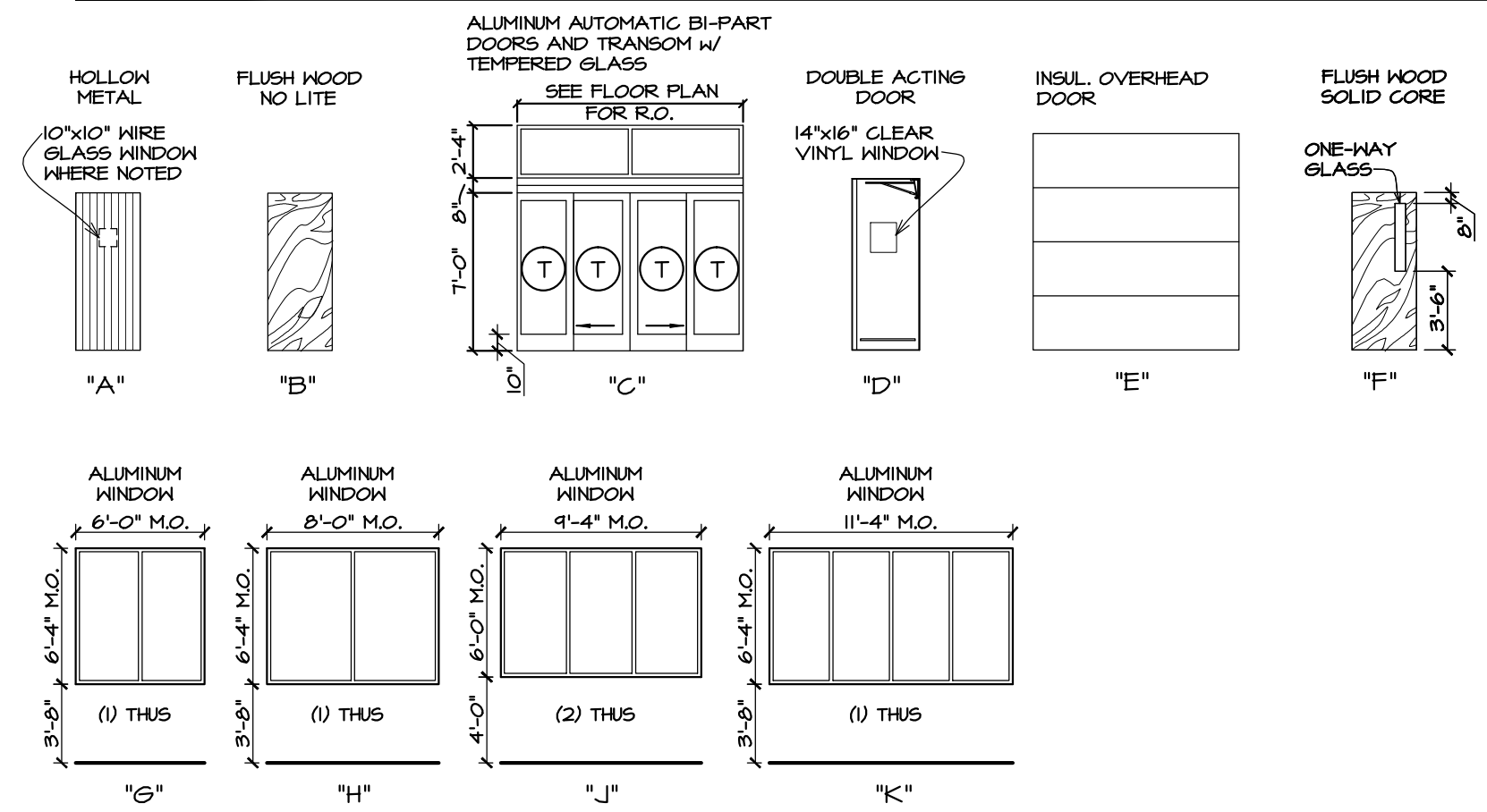


DOOR & WINDOW TYPES



DOOR/WINDOW SCHEDULE

NUMBER	DOOR		FRAME		REMARKS
	DOOR SIZE	TYPE	FIRE LABEL	FINISH	
101	72"x84"	C	---	ALUM. ALUM.	1/A402 REFER TO A201 FOR COLOR. ALUM. HEAD DEFLECTION TRACK REQ. SEE DETAIL 1/A402
104	3'-0"x7'-0"x1-3/4"	F	---	STAIN H.M.	4/A601 ONE WAY GLASS
105			---	H.M.	5/A601 8'-0"x7'-0" STORELESS DOOR FRAME ONLY
106	3'-0"x7'-0"x1-3/4"	B	---	STAIN H.M.	4/A601
107	3'-0"x7'-0"x1-3/4"	B	---	STAIN H.M.	4/A601
108	3'-0"x7'-0"x1-3/4"	B	---	STAIN H.M.	4/A601
109	3'-0"x7'-0"x1-3/4"	B	---	STAIN H.M.	4/A601
112			---	H.M.	5/A601 SIM. 4'-0"x7'-0" 5'-8" STORELESS DOOR FRAME ONLY
113A	72"x84"	C	---	ALUM. ALUM.	1/A402 COLOR TO MATCH DOOR ISOL. ALUM. HEAD DEFLECTION TRACK REQ. SEE DETAIL 1/A402
113B	3'-0"x7'-0"x1-3/4"	A	---	PAINT H.M.	1/A601 PAINT EXTERIOR TO MATCH EIFS. PAINT INTERIOR 'SPS CREME'
113C	PRJ 2'-6"x8'-2"x 240'	D	---	PREFIN. H.M.	6/TB/11/2/A601
117A	8'-0"x9'-0"	E	---	PAINT H.M.	243/A601 PADLOCK W/ HASP. H-LIFT HARDWARE. AUTOMATIC DOOR OPER. - NO CHAIN
117B	4'-0"x7'-0"x1-3/4"	A	---	PAINT H.M.	1/A601 PROVIDE 10"x10" WIRE GLASS WINDOW AND SIGN (SEE SPEC)
118	3'-0"x7'-0"x1-3/4"	A	---	PAINT H.M.	1/A601 MATCH ADJACENT HALL FINISH COLOR
11	11'-4"x6'-4"	K	---	ALUM. ALUM.	2/A402 REFER TO A201 FOR COLOR
12	6'-0"x6'-4"	G	---	ALUM. ALUM.	2/A402 REFER TO A201 FOR COLOR
13	8'-0"x6'-4"	H	---	ALUM. ALUM.	2/A402 REFER TO A201 FOR COLOR
14	9'-4"x6'-0"	J	---	ALUM. ALUM.	2/A402 ALUM. FRAME COLOR TO MATCH EXTERIOR NEEDS

NOTE: REFER TO SHT. E401 FOR SPECIFIC SECURITY DOOR HARDWARE REQUIREMENTS.

ROOM FINISH SCHEDULE

NUMBER	ROOM NAME	FLOORS						WALL FINISH				CEILING		REMARKS
		FINISH	BASE	SOUTH	EAST	NORTH	WEST	FINISH	BASE	FINISH	BASE	TYPE	HEIGHT	
101	ENTRY	53	65	75	75	75	75	P1	43*	9'-11"				
102	CARTS	53	65	75	---	75	75	P1	43*	9'-11"				
103	MANAGER'S WORK STATION	53	65	75	75	75	---	P2	41					INSTALL BASE ON ALL OWNER SUPPLIED CABINETS
104	MANAGER'S OFFICE	51	65	75	75	75	75	P2	43*	8'-0"				
105	EQUIPMENT ROOM	53	65	75	75	75	75	P1	43*	10'-0"				
106	WOMEN	52	66	72	72	72	72	---	44*	8'-0"				
107	MEN	52	66	72	72	72	72	---	44*	8'-0"				
108	EMPLOYEE LOUNGE	52	65	75	75	75	75	P2	43*	8'-0"				
109	PREP ROOM	52	65	72	72	72	72	---	44*	8'-0"				
110	CHECKOUTS	53	65	---	75	---	---	P2	41					VARIES
111	SALES CORRIDOR	53	65	75	75	75	---	P2	41					VARIES
112	DRY EXPRESS ORDER ROOM	52	65	75	75	75	75	P1	44*	9'-0"				
113	SALES AREA	53	65	75	75	75	75	P1	43*	9'-11"				VINYL BASE ALL AREAS WHERE NO FIXTURES OCCUR
114	COOLER	54	---	---	---	---	---	PREFIN. BY REFRIGERATION CONTRACTOR						REFER TO FOUNDATION PLAN FOR LOCATION
115	FREEZER #1	54	---	---	---	---	---	PREFIN. BY REFRIGERATION CONTRACTOR						REFER TO FOUNDATION PLAN FOR LOCATION
116	STOCK ROOM	54	---	75	---	---	75	P1	41					PROVIDE (1) 2X4 EGG CRATE TILE
117	RECEIVING	54	---	75	75	75	75	P1	41					
118	FIRE PROTECTION RM.	---	---	73	73	73	73	---	43	12'-0"				

FINISH KEY

NUMBERS 1-50 RESERVED FOR HALL SECTIONS

FLOORS

- 51. CARPET - BIGELOW COMMERCIAL #441 'MICA'
- 52. EPOXY - DUR-A-FLEX, DUR-A-CHIP, MACRO CHIP COLOR BLEND 'OYSTERSHELL'
- 53. EXPOSED CONCRETE WITH 1/4" M CURE
- 54. EXPOSED CONCRETE WITH SURFLEX

BASES

- 65. 4" VINYL BASE
- 66. 6" VINYL BASE

WALLS

- 72. PREFINISHED STIPPLE FACED FRP PANELS - MATCH GLASSBORO PIF 84 IVORY
- 73. PRIME PAINTED BLOCK FILLER FINISH
- 75. SEMIGLOSS ACRYLIC-ENAMEL FINISH

CEILING

- 41. EXPOSED CONSTRUCTION (PAINT)
- 43. SUSPENDED GRID SYSTEM w/ LAY-IN ACOUSTICAL PANELS
- 44. SUSPENDED GRID SYSTEM w/ LAY-IN ACOUSTICAL PANELS w/ SCRUBBABLE VINYL FACED TILE

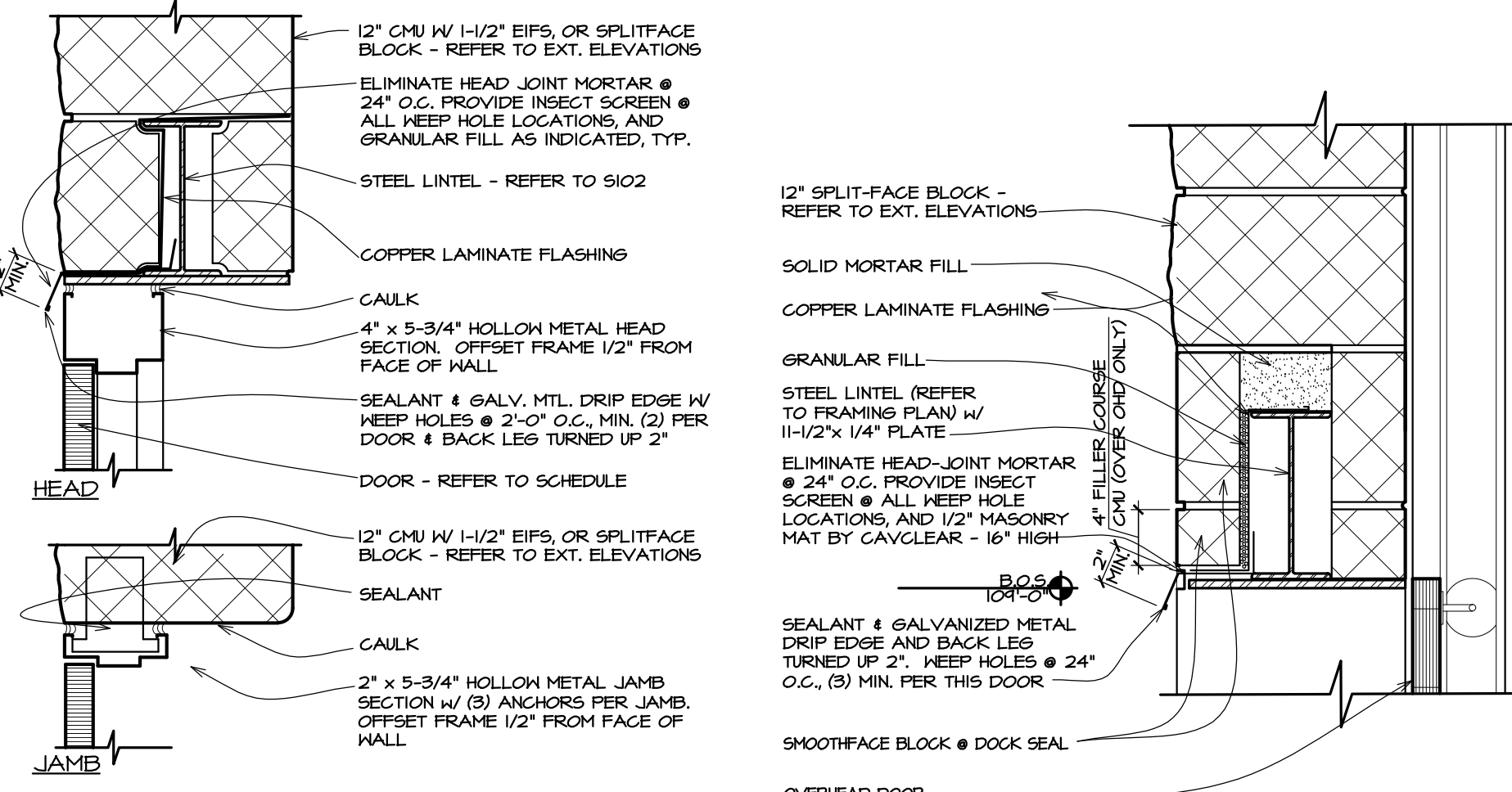
NOTE: REFER TO ELECTRICAL DWGS. FOR CEILING GRID LAYOUT.

*** NOTE: PROVIDE VINYL BASE AS SHOWN IN INTERIOR ELEVATIONS ON SHT. #A602

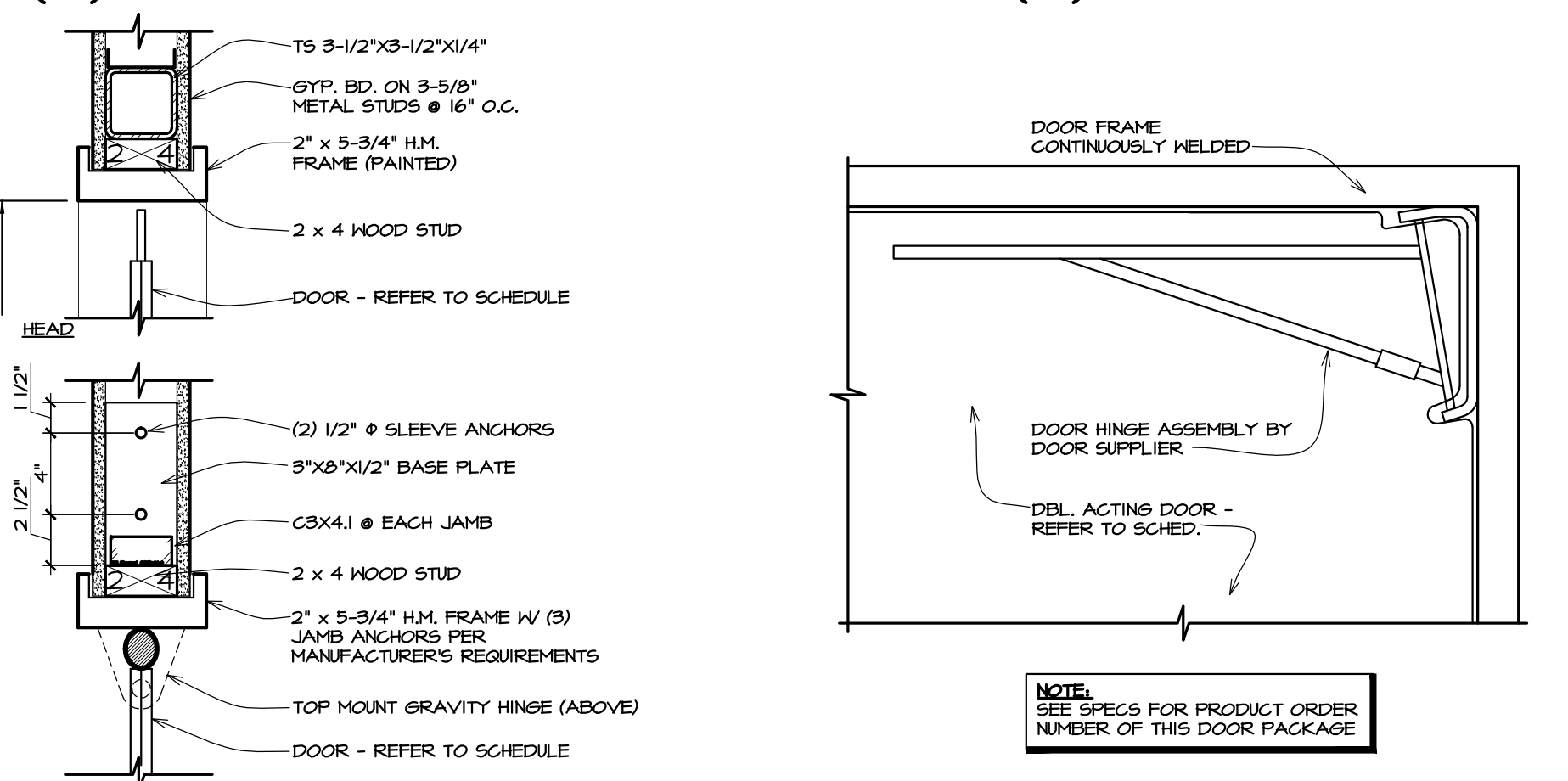
PAINT SCHEDULE

P1. WHITE
P2. SHERWIN WILLIAMS 'GFS CREME'

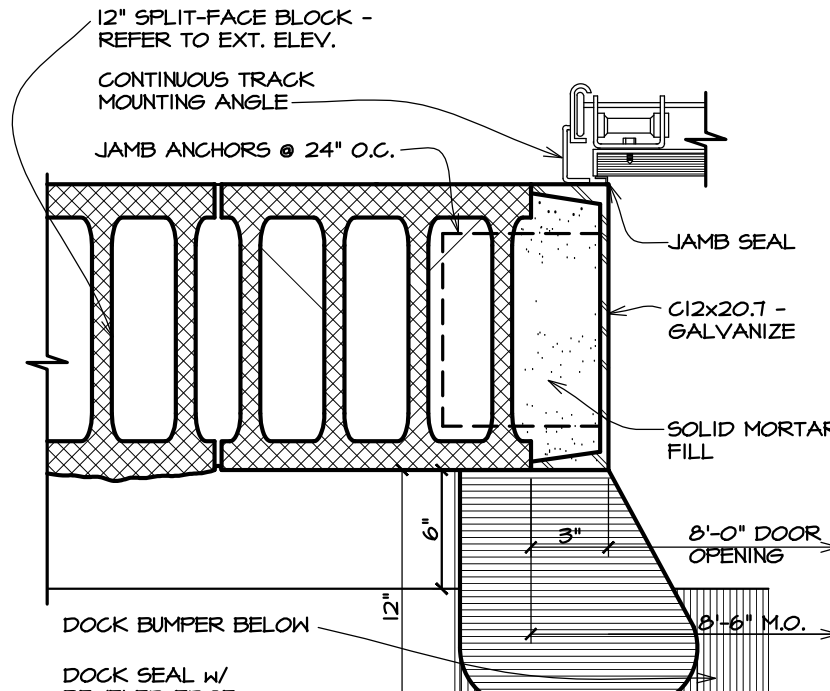
INT./EXT. PAINT	COLOR
EXTERIOR H.M. DOORS & FRAMES	MATCH BERRIDGE 'DEEP RED' (ENAMEL) AT EXT.
STRUCTURAL STEEL JOISTS, DECK, AND COLUMNS	PURE WHITE (AIRLESS SPRAY ALKYD)
WOOD DOORS	CLEAR STAIN (OAK)
VINYL WALL BASE	PER SPECIFICATION
INT. H.M. DOOR FRAMES AT WOOD DOORS AND H.M. WINDOW FRAME	WHITE / SHERWIN WILLIAMS 'GFS CREME' - AS SHOWN ON 9/A601 FOR MULTI-COLOR FRAMES



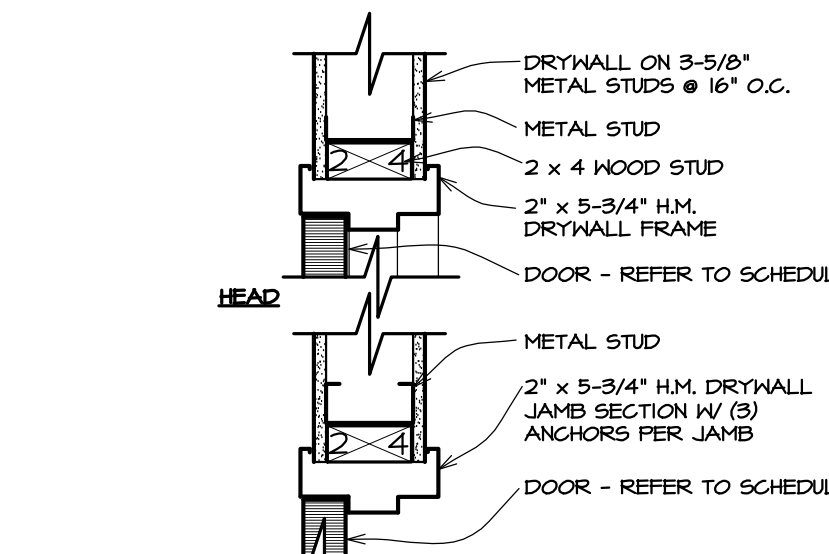
1 EXT. DOOR DTL. SCALE: 1/12" = 1'-0"



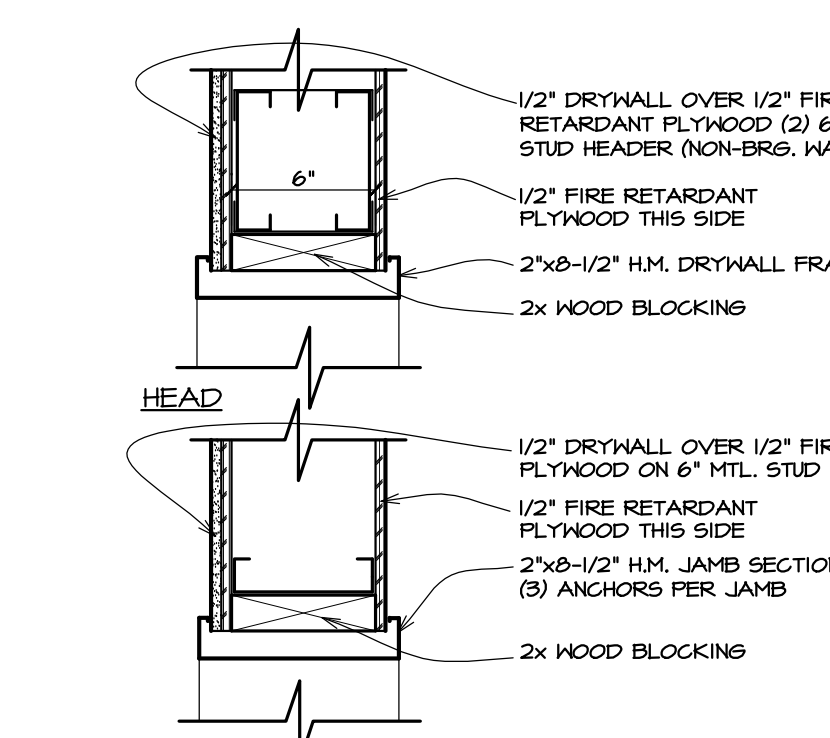
2 EXT. DOOR DTL. SCALE: 1/12" = 1'-0"



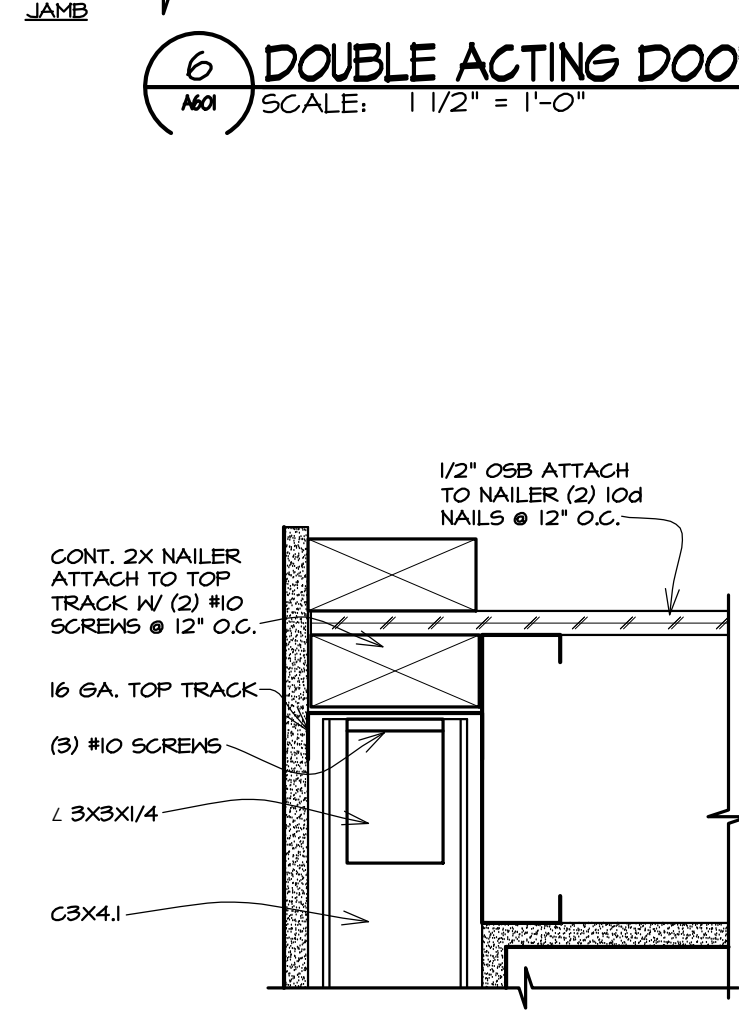
3 EXT. DOOR DTL. SCALE: 1/12" = 1'-0"



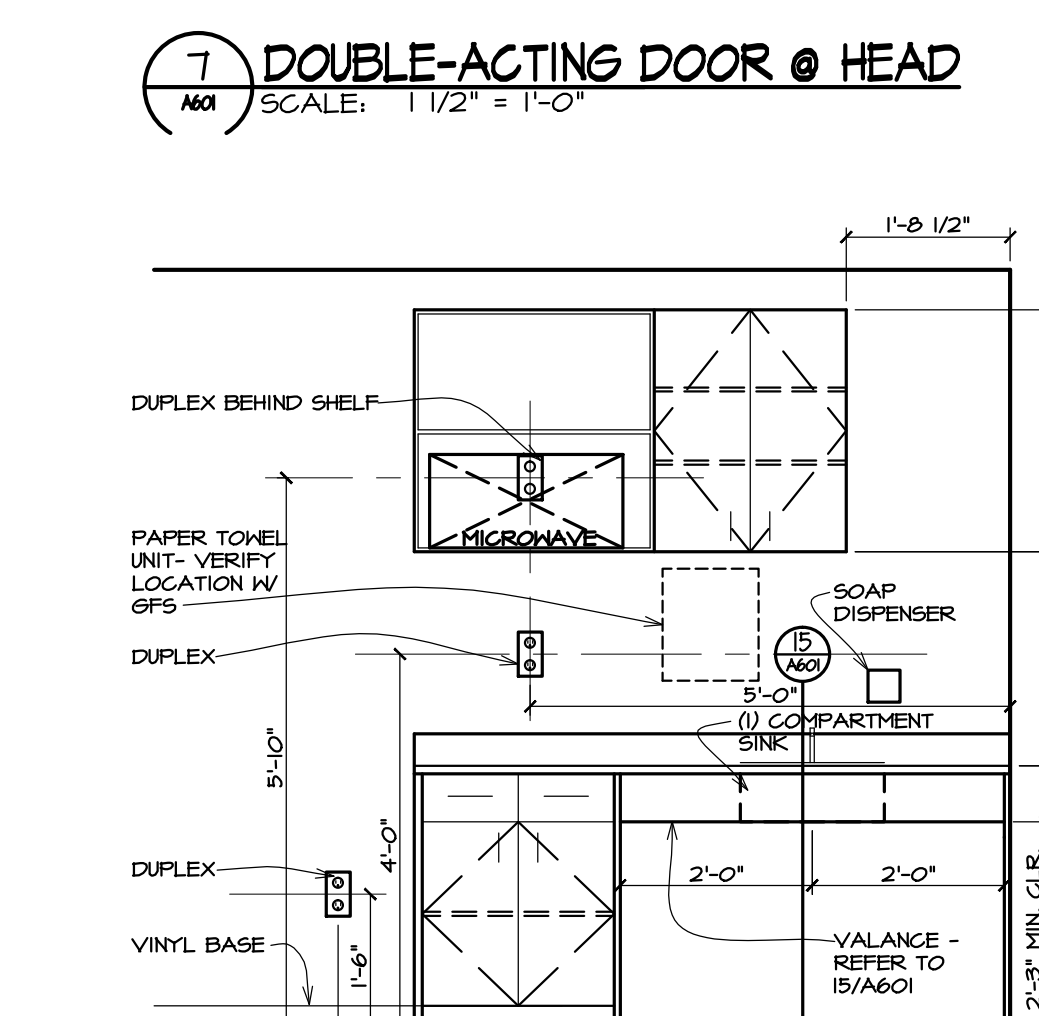
4 DOOR DTL. SCALE: 1/12" = 1'-0"



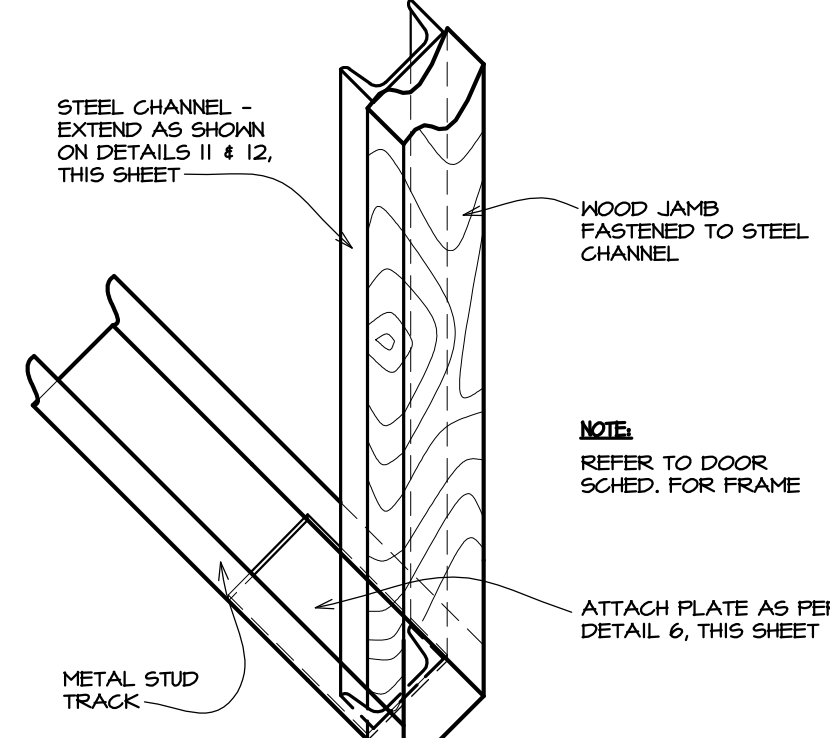
5 DOOR DTL. SCALE: 1/12" = 1'-0"



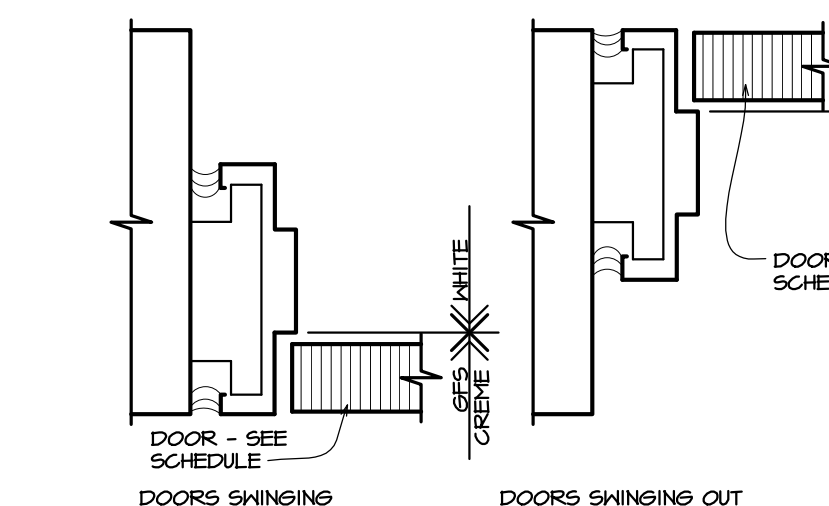
6 DOUBLE ACTING DOOR SCALE: 1/12" = 1'-0"



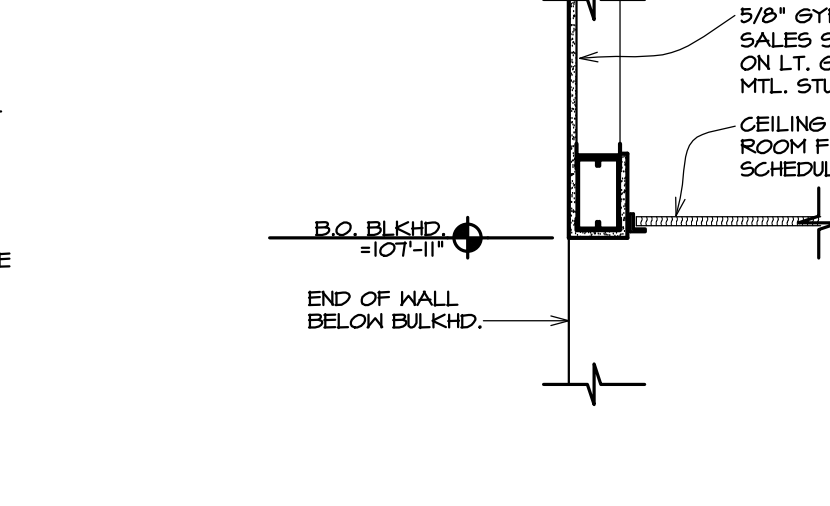
7 DOUBLE-ACTING DOOR @ HEAD SCALE: 1/12" = 1'-0"



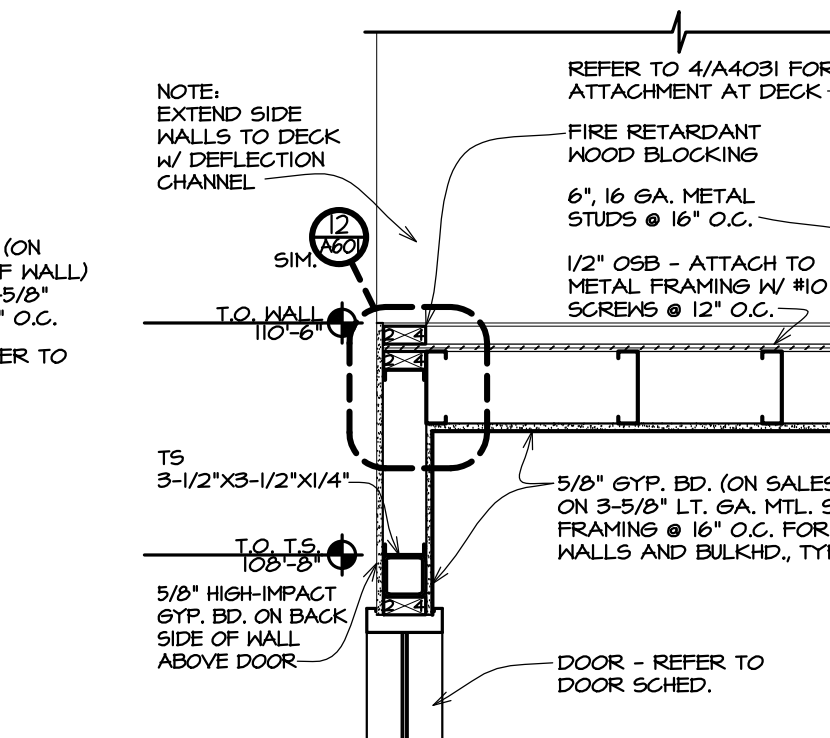
8 DOUBLE-ACTING DOOR DTL. SCALE: 1/12" = 1'-0"



9 DOOR FRAME PAINT DTL. SCALE: 3/16" = 1'-0"



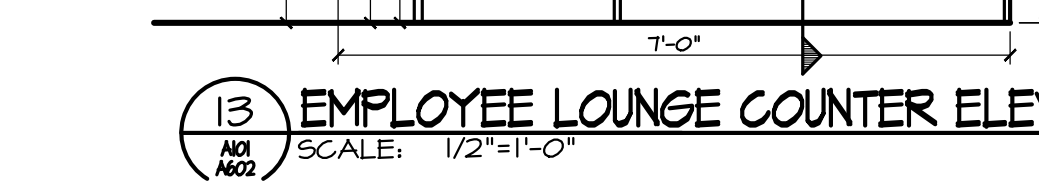
10 BULKHEAD DTL. SCALE: 3/4" = 1'-0"



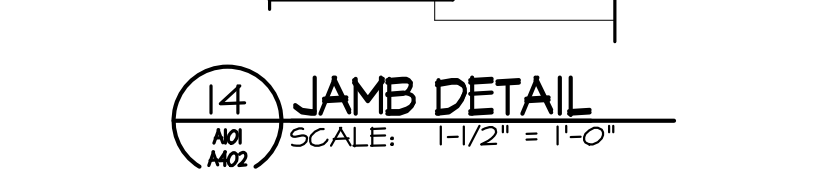
11 BULKHEAD @ DOOR #113C SCALE: 3/4" = 1'-0"



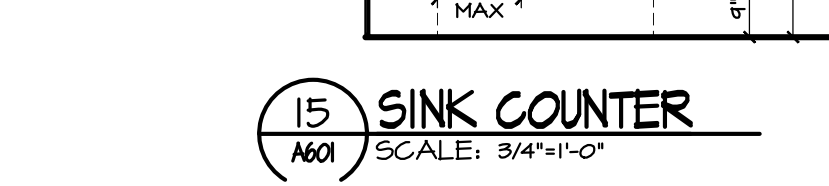
12 CHANNEL TO BULKHEAD CONNECTION DTL. SCALE: 3/16" = 1'-0"



13 EMPLOYEE LOUNGE COUNTER ELEV. SCALE: 1/2" = 1'-0"



14 JAMB DTL. SCALE: 1/12" = 1'-0"



15 SINK COUNTER SCALE: 3/4" = 1'-0"

ARCHITECTS • CIVIL ENGINEERS

paradigm design

550 3 MILE N.W.
SUITE B
GRAND RAPIDS, MI 49544

PHONE (616) 785-5656
FAX (616) 785-5657
WEB PARADIGMAE.COM

PROJECT

GFS MARKETPLACE

TEMP 120 ROTHROCK ROAD
AKRON, OH

BLDG OWNER:

GFS MARKETPLACE REALTY FIVE, LLC

P.O. BOX 1812
GRAND RAPIDS, MI

RELEASE DATE

4-23-12 OWNER REVIEW
4-27-12 FOR PERMITS & CONSTRUCTION
5-21-12 FOR PERMITS, BIDS & CONSTRUCTION
5-29-12 ADDENDUM #1
6-15-12 BULLETIN #1

PROJECT

1105054

SHEET

A601

Wednesday, July-10-2013 at 8:06am © 1105054 GFS Copley Township Of Akron (Drawings/Architectural/A601-C54.dwg) dkt