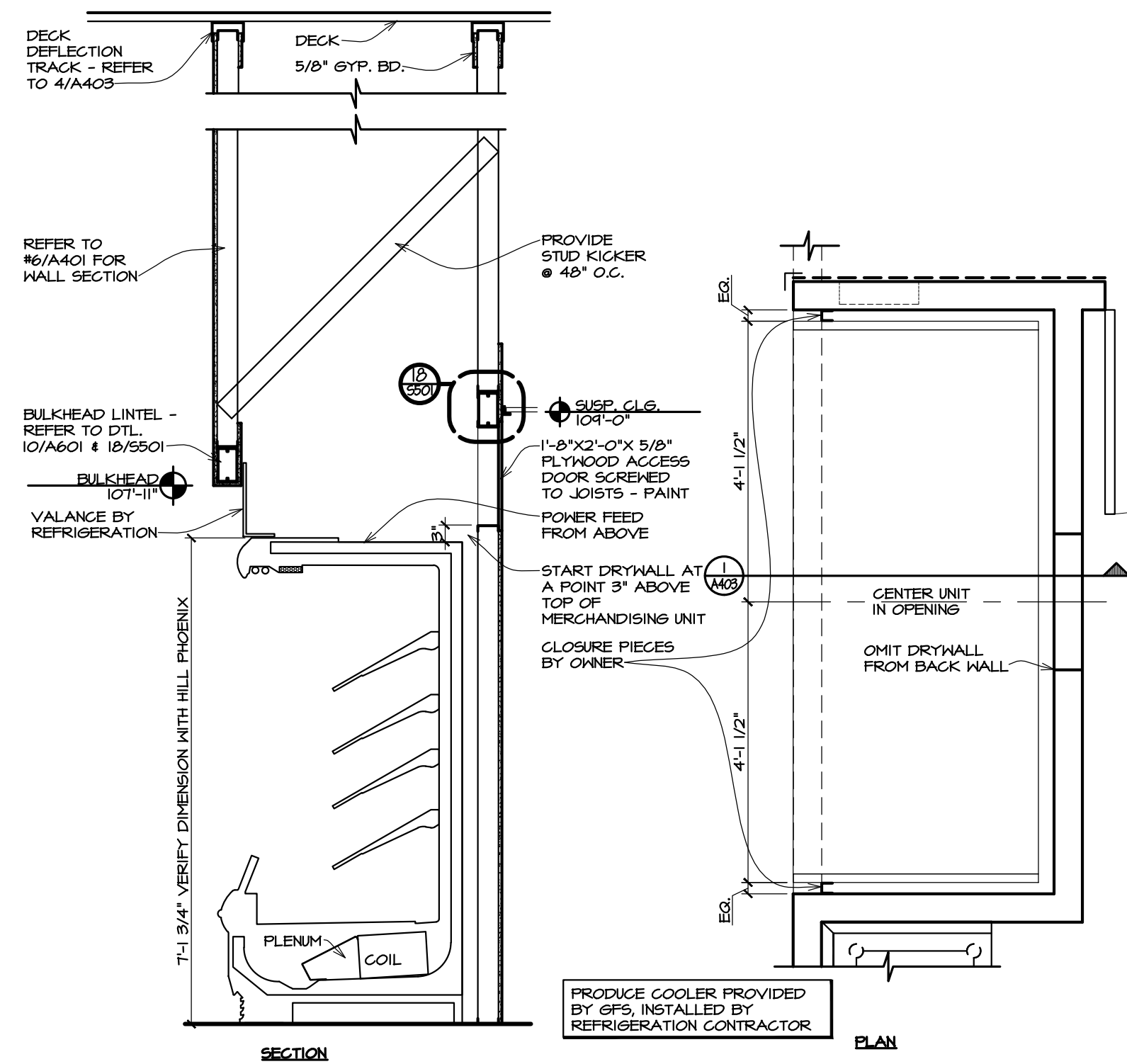
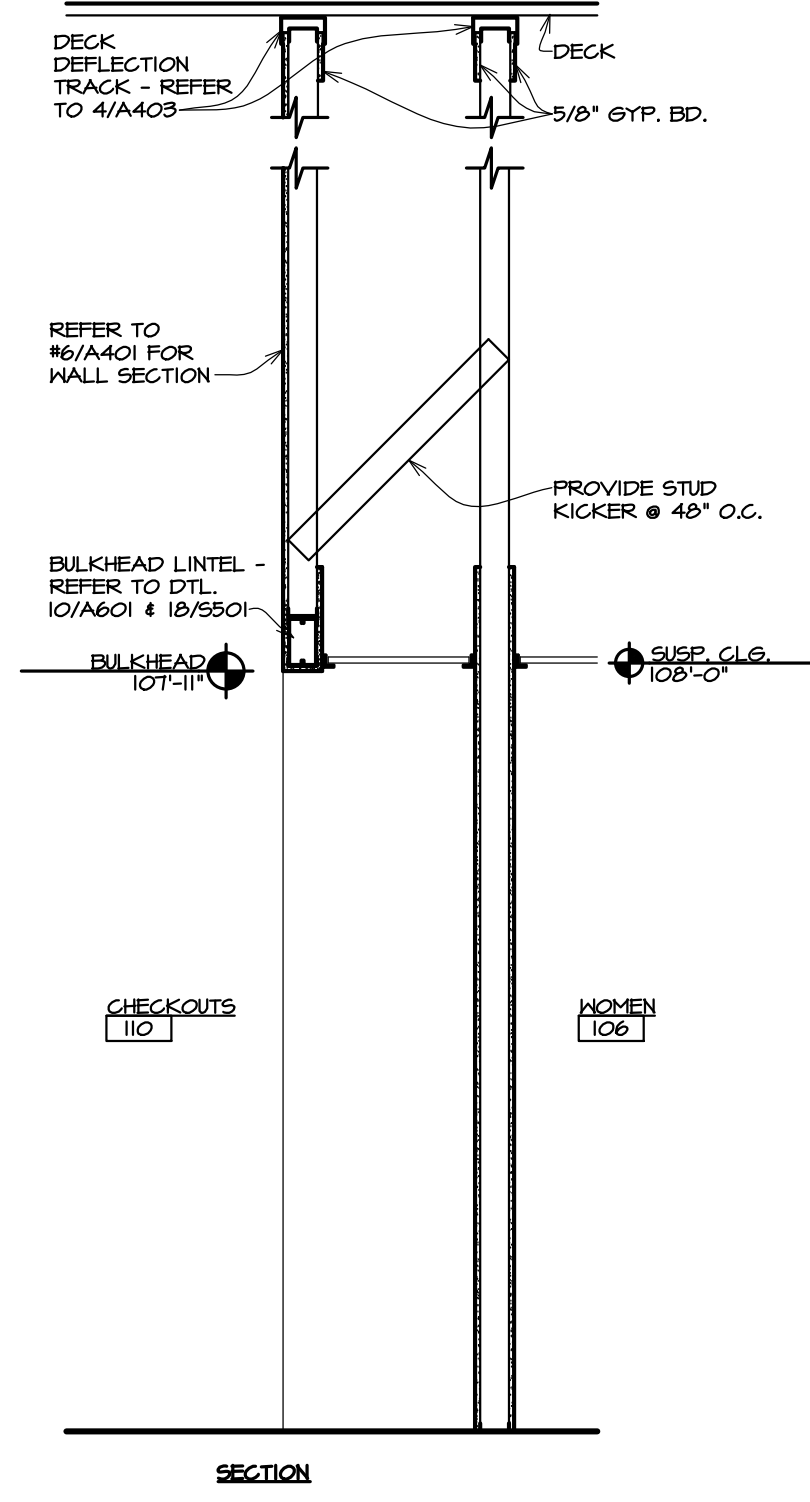


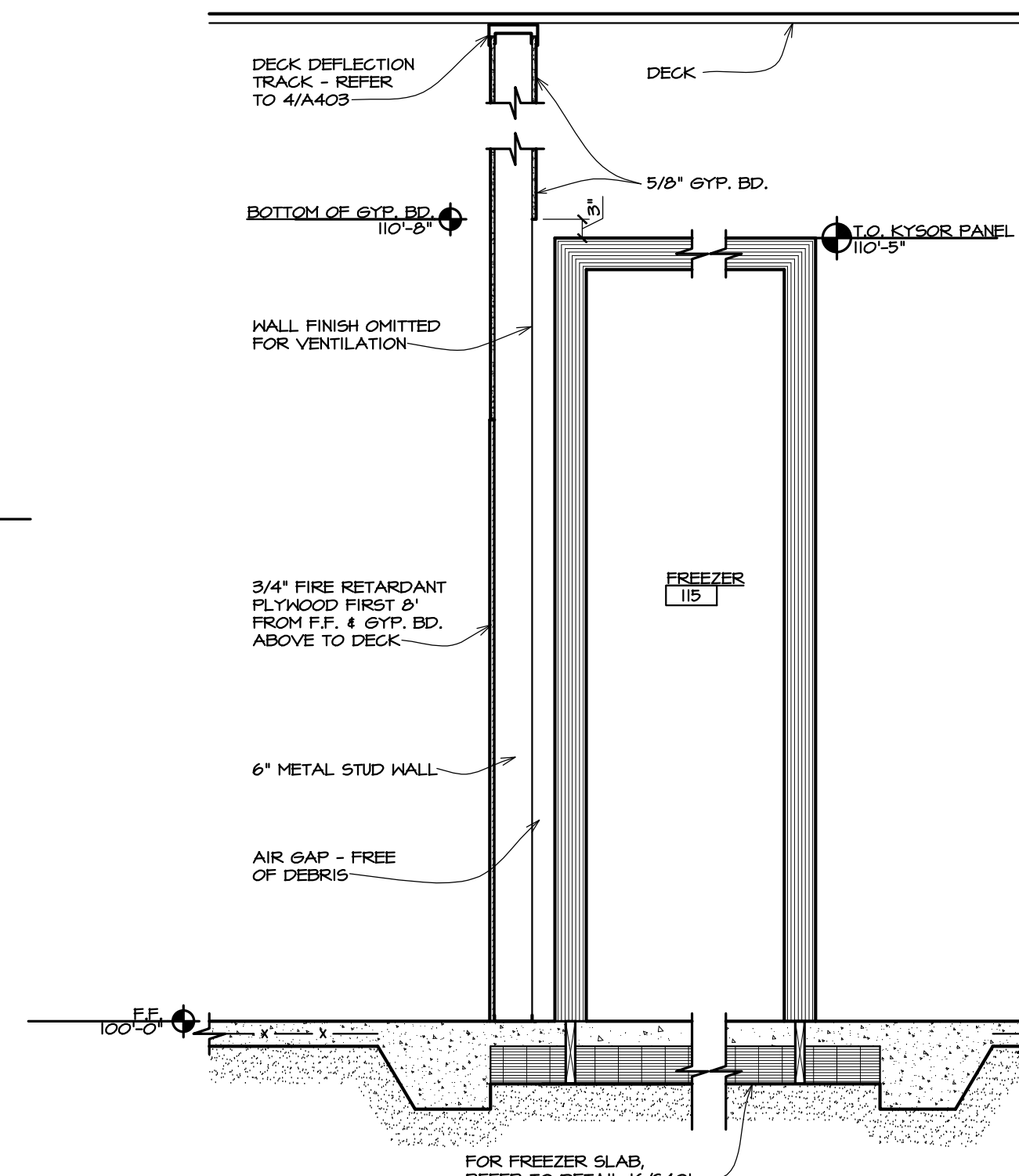
Wednesday, July 10, 2013, at 8:54am © 1105054 GFS Copley Township, OH (Arcorp)Architectural\A403-1054.dwg ok



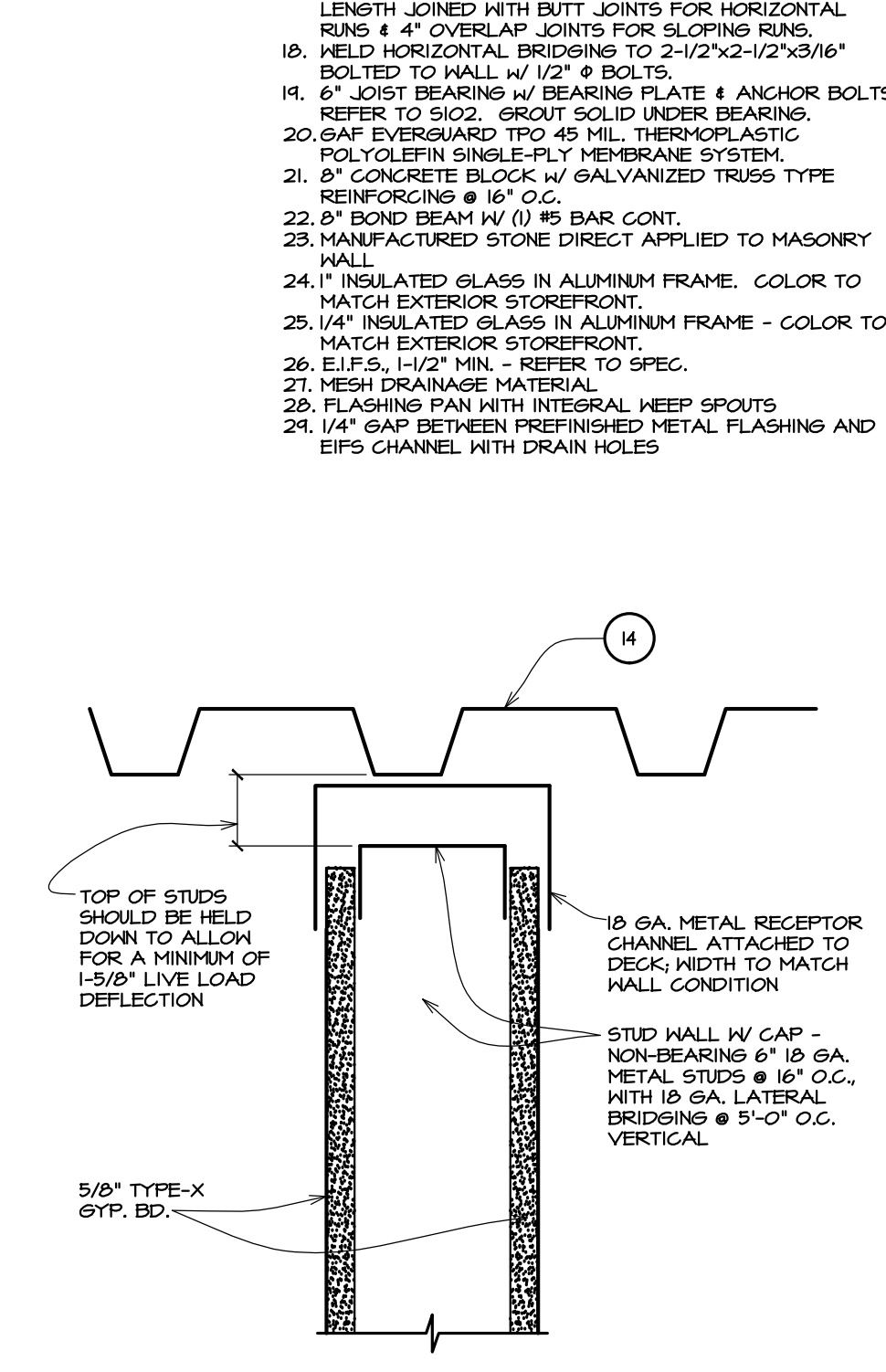
1 Q5MH, Q5DMH MERCHANDISER
SCALE: 1/2"=1'-0"



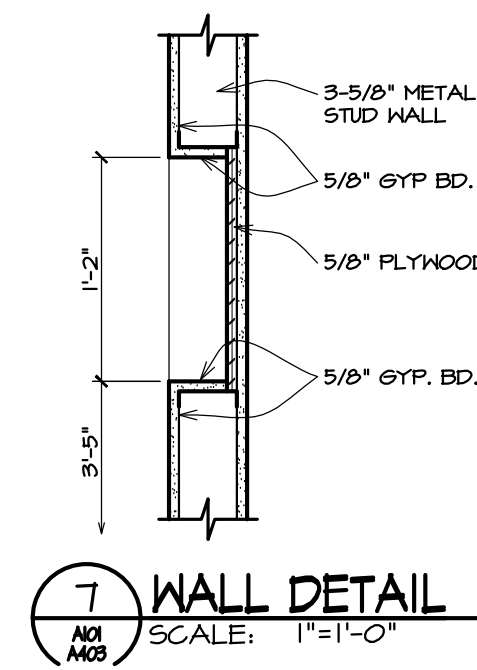
2 BULKHEAD @ TOILET RMS.
SCALE: 1/2"=1'-0"



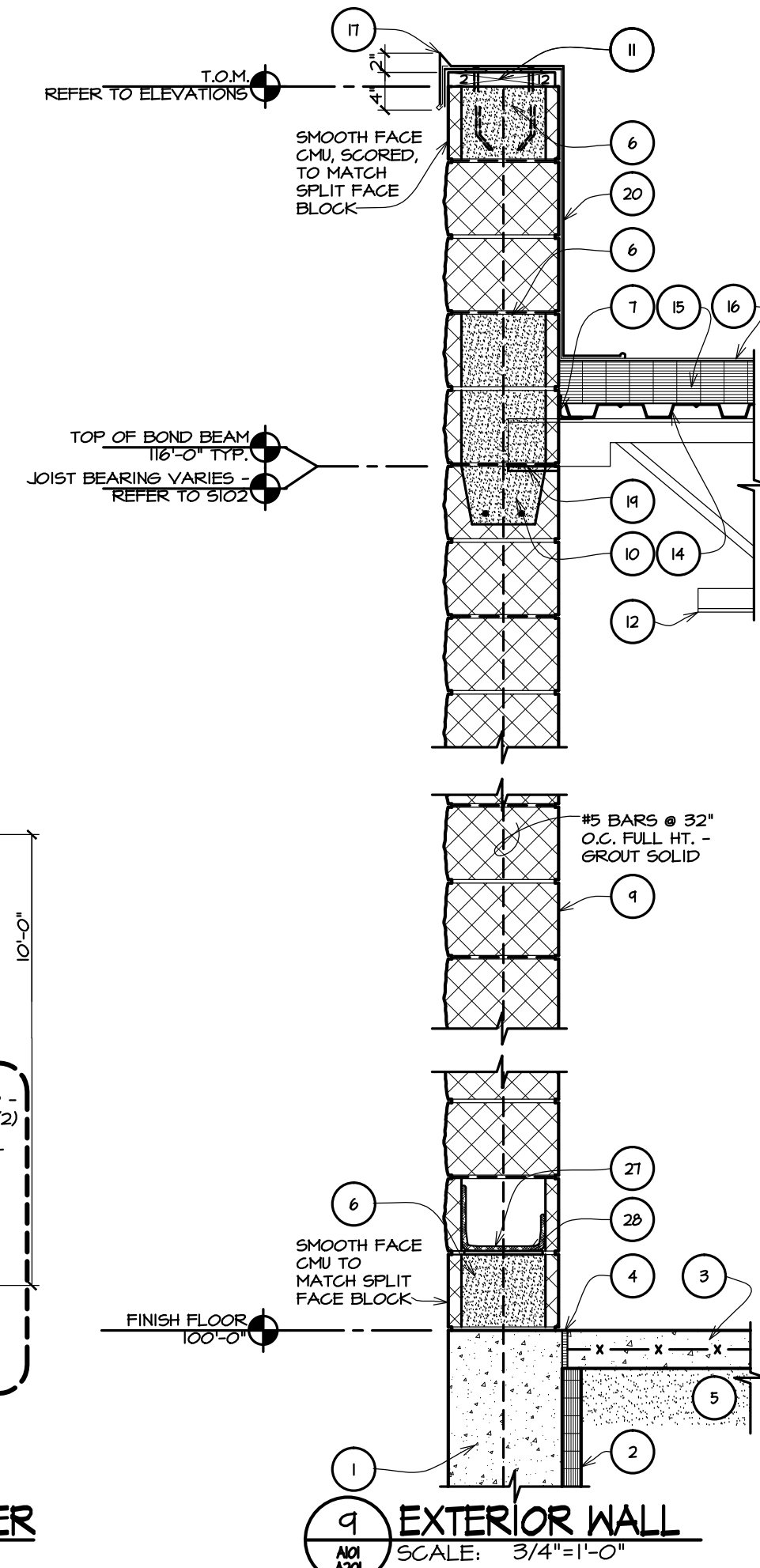
3 WALL SECTION @ FREEZER
SCALE: 1/2"=1'-0"



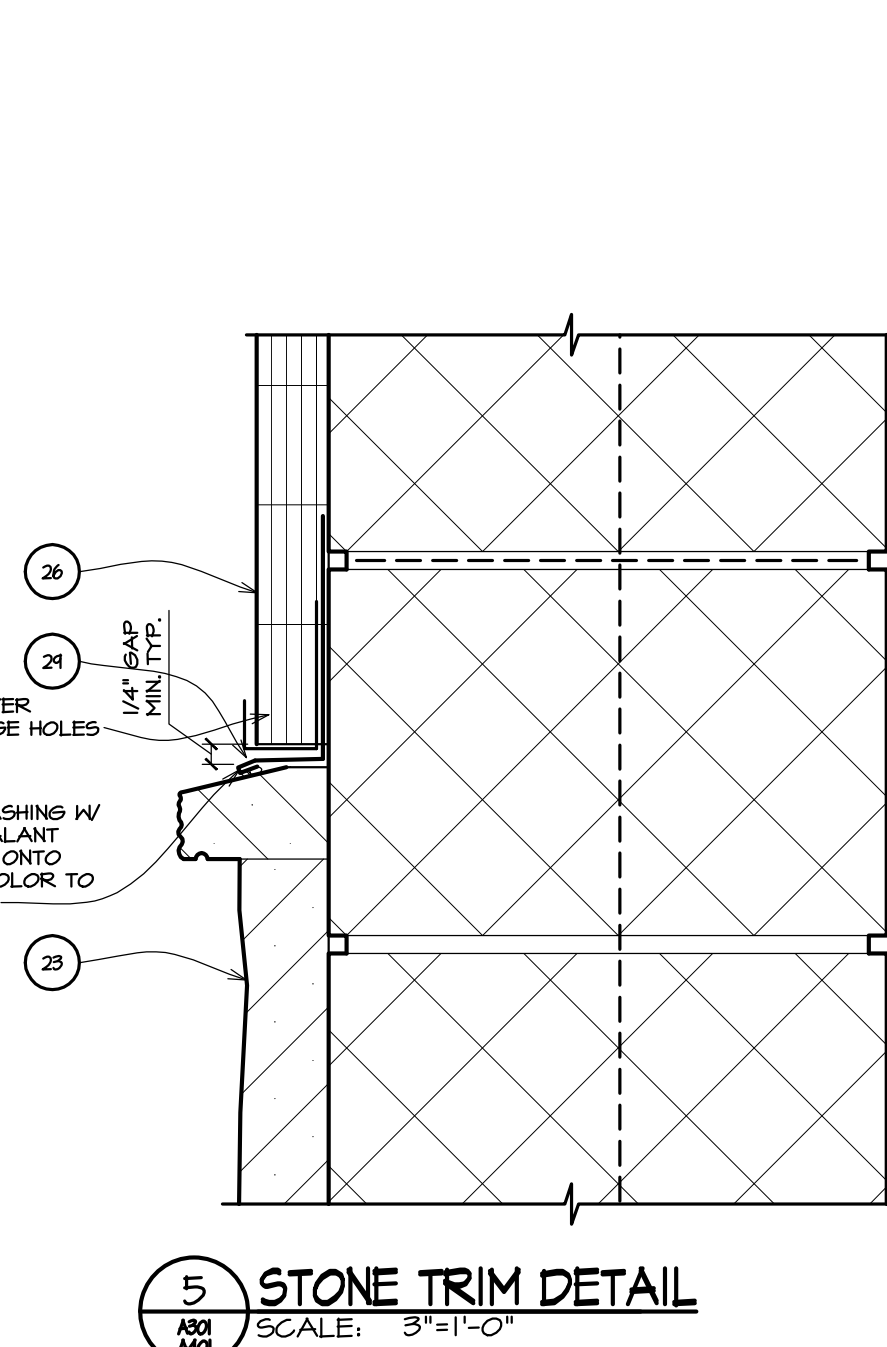
4 DECK DEFLECTION @ INTERIOR STUD WALLS TO DECK
SCALE: 3/4"=1'-0"



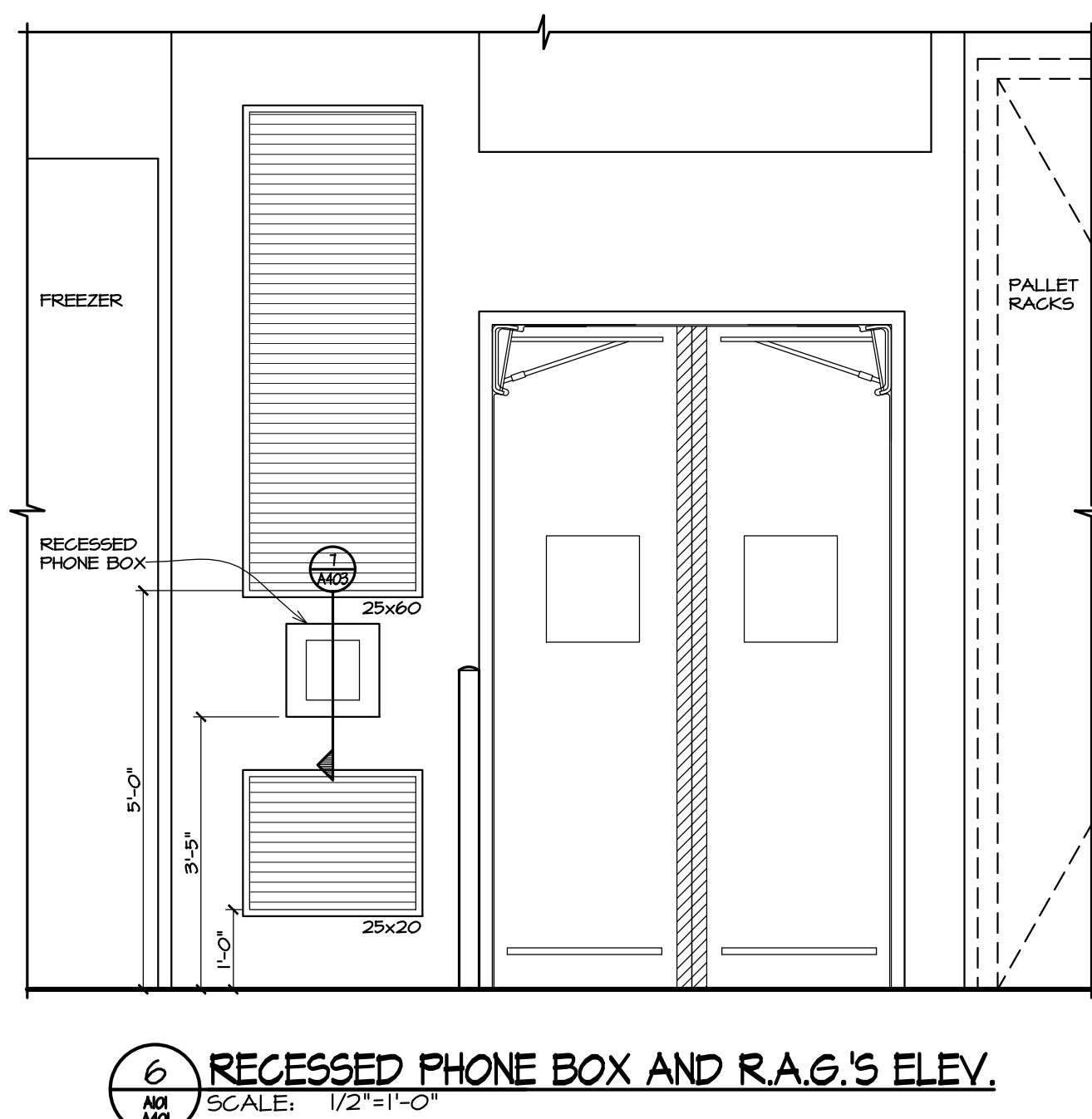
7 WALL DETAIL
SCALE: 1"=1'-0"



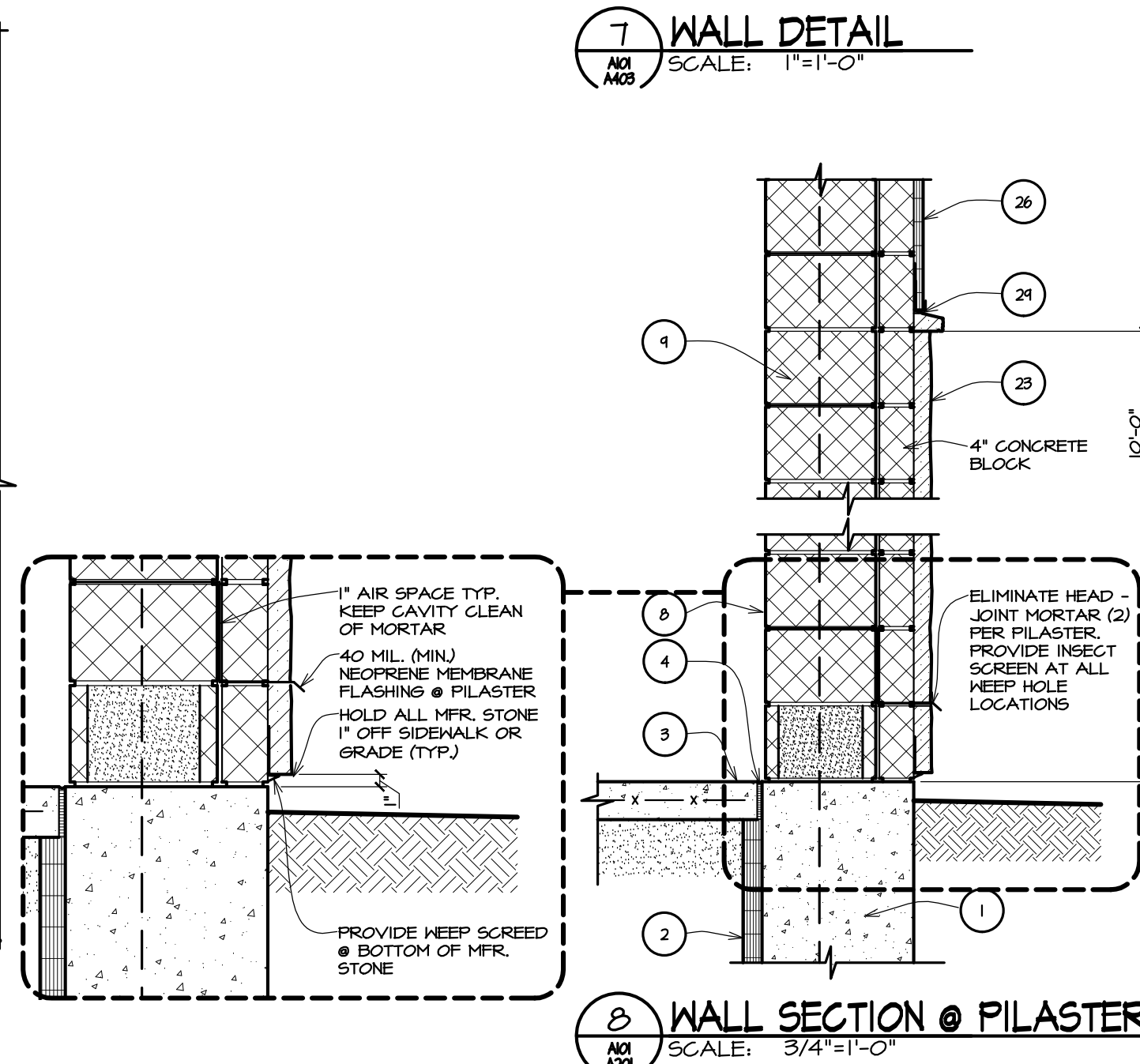
9 EXTERIOR WALL
SCALE: 3/4"=1'-0"



5 STONE TRIM DETAIL
SCALE: 3/4"=1'-0"



6 RECESSED PHONE BOX AND R.A.G.'S ELEV.
SCALE: 1/2"=1'-0"



8 WALL SECTION @ PILASTER
SCALE: 3/4"=1'-0"

MATERIAL LIST

- FOUNDATION - REFER TO S101
- 2" PERIMETER INSULATION
- 4" CONCRETE SLAB - REFER TO S101
- 1/2" EXPANSION JOINT MATERIAL
- COMPACTED SAND FILL - REFER TO SPEC.
- SOLID GROUT BLOCK COURSE(S) AS SHOWN
- STEEL ANGLE - REFER TO S102 FOR SIZE
- 12" CONCRETE BLOCK w/ GALVANIZED TRUSS TYPE REINFORCING @ 16" O.C.
- FILL CORES w/ MASONRY INSULATION
- 12" BOND BEAM w/ (1) #5 BAR CONT.
- WEATHER TREATED TOP PLATES AS NOTED w/ 1/2" @ A.B. @ 2'-0" STAGGERED, MIN. 6" EMBED. INTO BOND BEAM
- STEEL FRAMING - REFER TO S102
- HORIZONTAL BRIDGING - REFER TO S102
- 1-1/2" HR. METAL DECK (PAINTED) - REFER TO S102 FOR GAUGE
- 4-1/2" ROOF INSULATION
- ROOF
- PREFINISHED 24 GA. METAL DRIP EDGE w/ CONTINUOUS
- 22 GA. CLEAT - REFER TO A201 FOR COLOR. 12" MAX. LENGTH JOINED WITH BUTT JOINTS FOR HORIZONTAL RUNS & 4" OVERLAP JOINTS FOR SLOPING RUNS.
- WELD HORIZONTAL BRIDGING TO 2-1/2"x2-1/2"x3/16" BOLTED TO WALL w/ 1/2" @ BOLTS.
- 6" JOIST BEARING w/ BEARING PLATE & ANCHOR BOLTS. REFER TO S102. GROUT SOLID UNDER BEARING.
- 64F EYEWALL TO 45 MIL. THERMOPLASTIC POLYOLEFIN SINGLE-PLY MEMBRANE SYSTEM.
- 6" CONCRETE BLOCK w/ GALVANIZED TRUSS TYPE REINFORCING @ 16" O.C.
- 22.8" BOND BEAM w/ (1) #5 BAR CONT.
- MANUFACTURED STONE DIRECT APPLIED TO MASONRY WALL
- INSULATED GLASS IN ALUMINUM FRAME. COLOR TO MATCH EXTERIOR STOREFRONT.
- 1/4" INSULATED GLASS IN ALUMINUM FRAME - COLOR TO MATCH EXTERIOR STOREFRONT.
- E.I.F.S. 1/2" MIN. - REFER TO SPEC.
- MESH DRAINAGE MATERIAL
- FLASHING PAN WITH INTEGRAL KEEP SPIGOTS
- 1/4" GAP BETWEEN PREFINISHED METAL FLASHING AND EIFS CHANNEL WITH DRAIN HOLES

ARCHITECTS • CIVIL ENGINEERS

p
d

paradigm
design

550 3 MILE N.W.
SUITE B
GRAND RAPIDS, MI 49544

PHONE (616) 785 - 5656
FAX (616) 785 - 5657
WEB PARADIGMAE.COM

PROJECT

GFS
MARKETPLACE

COPLEY
TOWNSHIP

TEMP 120 ROTHROCK ROAD
AKRON, OH

BLDG OWNER:

GFS MARKETPLACE
REALTY FIVE, LLC

P.O. BOX 1812
GRAND RAPIDS, MI

RELEASE DATE

4-23-12	OWNER REVIEW
4-27-12	FOR PERMITS & CONSTRUCTION
5-21-12	FOR PERMITS, BIDS & CONSTRUCTION

PROJECT

1105054

SHEET

A 403