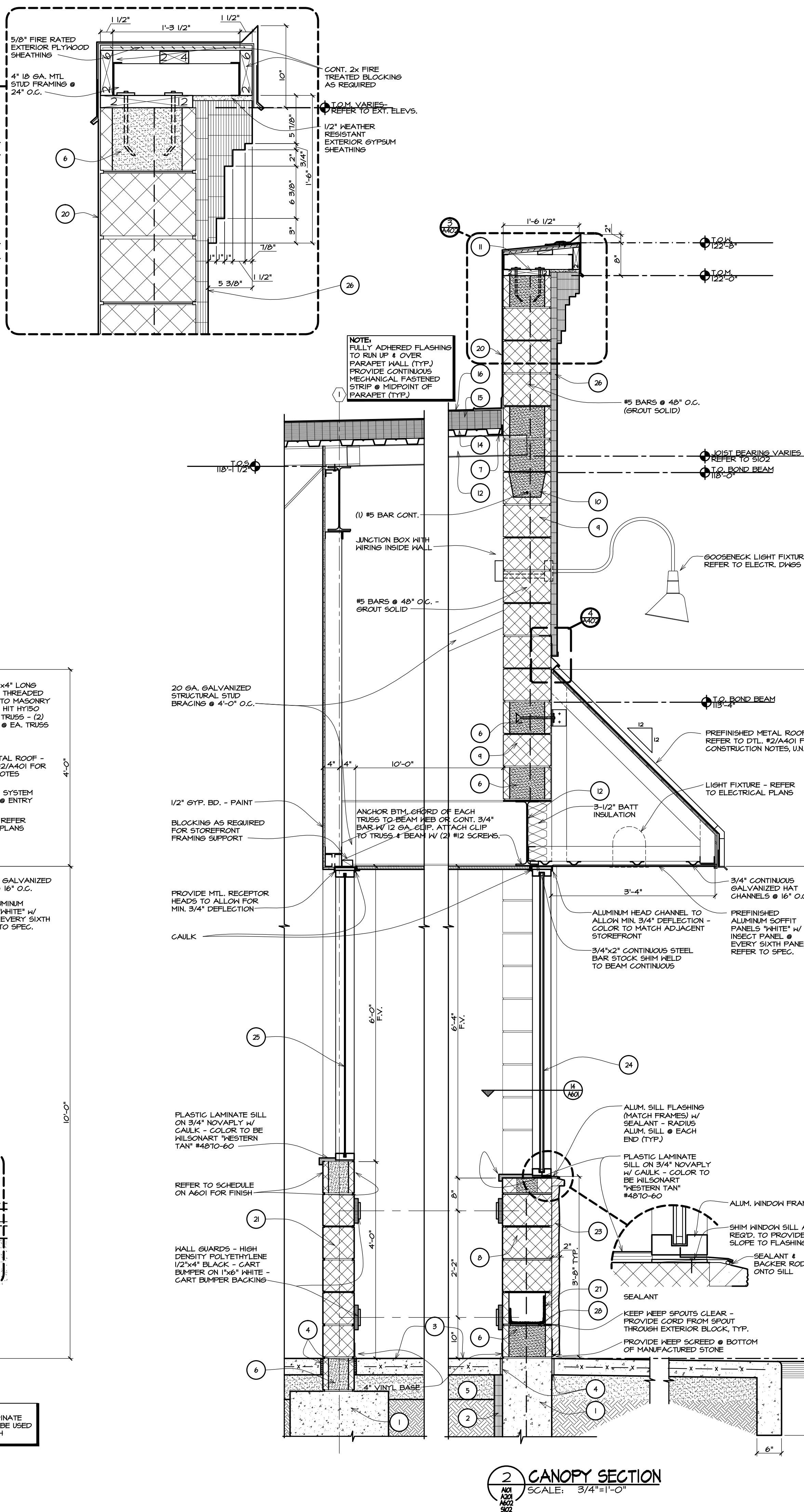
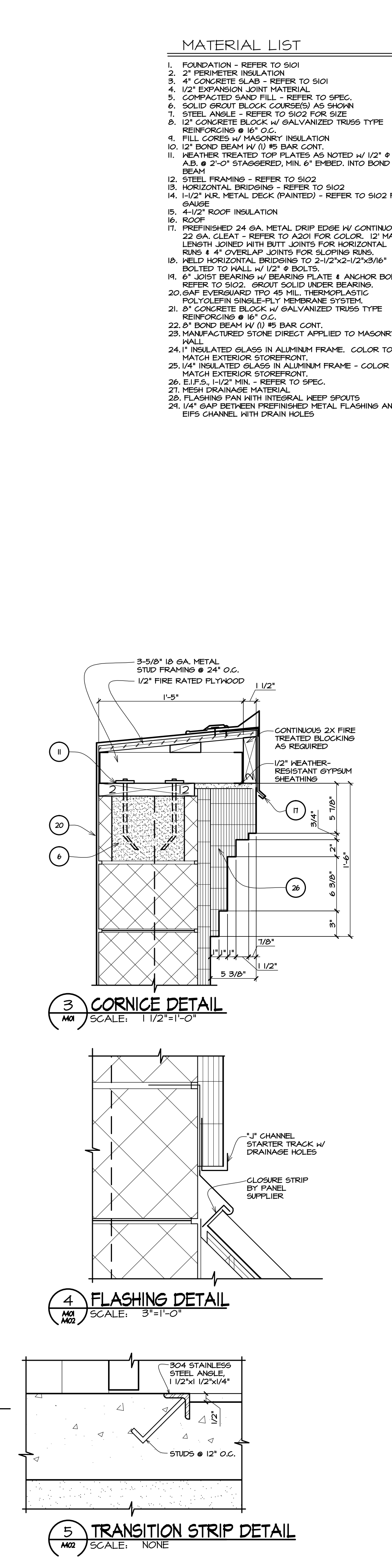


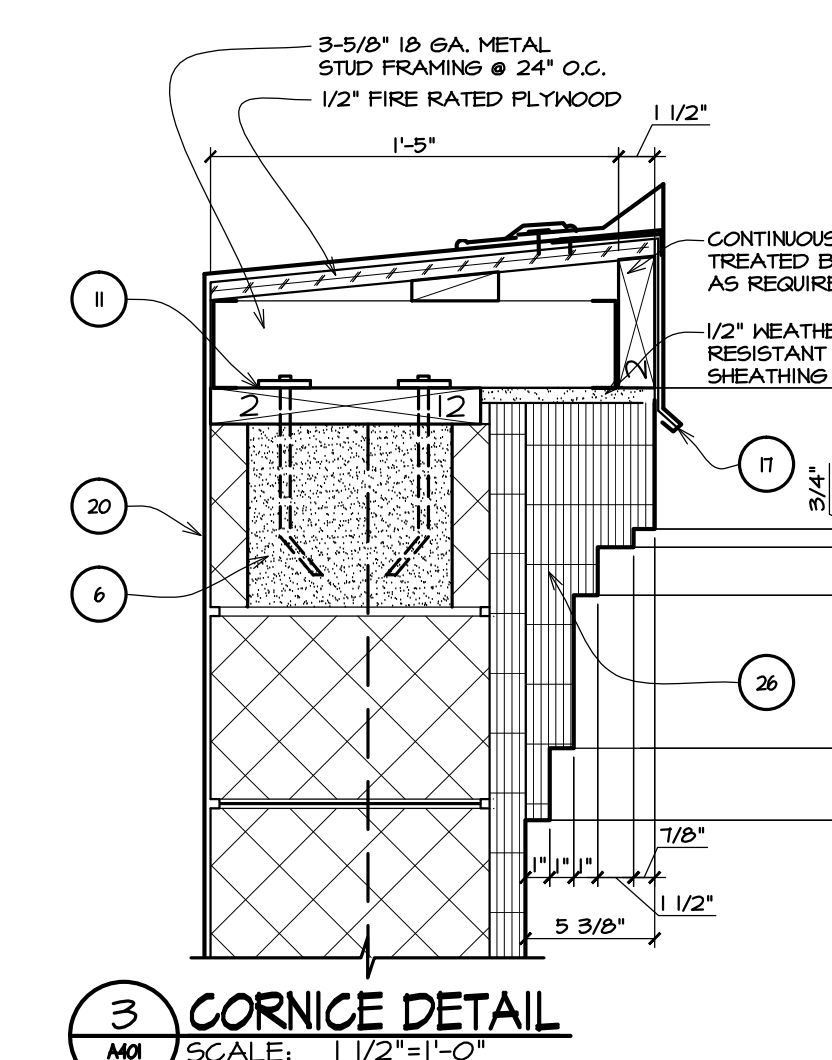
1 ENTRY SECTION
SCALE: 3/4"=1'-0"



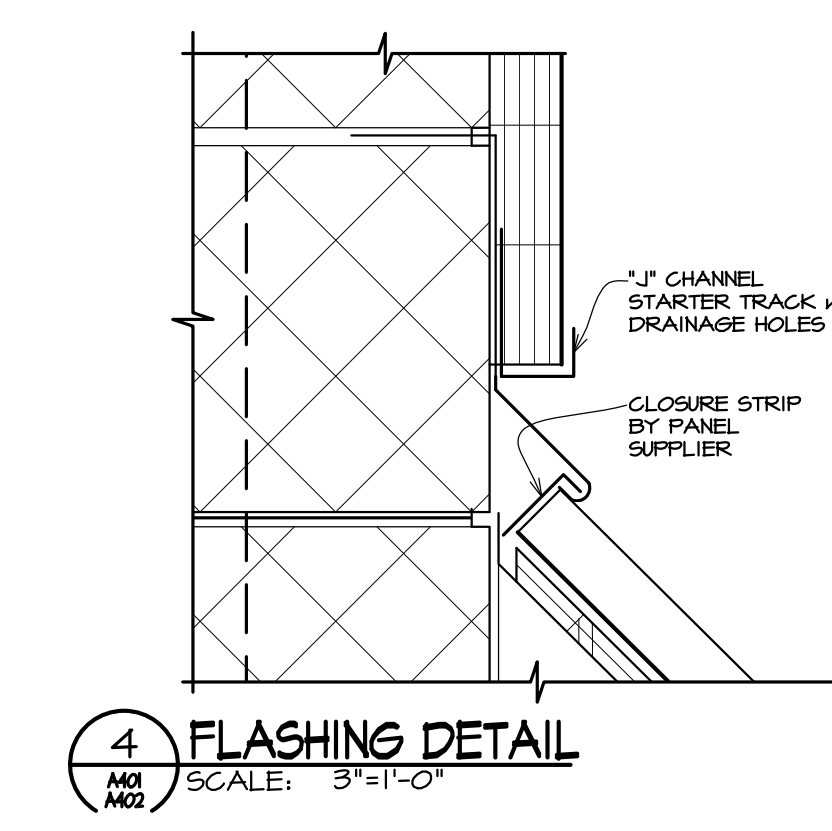
2 CANOPY SECTION
SCALE: 3/4"=1'-0"



5 TRANSITION STRIP DETAIL
SCALE: NONE



3 CORNICE DETAIL
SCALE: 1 1/2"=1'-0"



4 FLASHING DETAIL
SCALE: 3"=1'-0"

MATERIAL LIST

1. FOUNDATION - REFER TO S101
2. 2" PERIMETER INSULATION
3. 4" CONCRETE SLAB - REFER TO S101
4. 1/2" EXPANSION JOINT MATERIAL
5. COMPACTED SAND FILL - REFER TO SPEC.
6. SOLID GROUT BLOCK COURSES AS SHOWN
7. STEEL ANGLE - REFER TO S102 FOR SIZE
8. 12" CONCRETE BLOCK w/ GALVANIZED TRUSS TYPE REINFORCING @ 16" O.C.
9. FILL CORES w/ MASONRY INSULATION
10. 12" BOND BEAM w/ (1) #5 BAR CONT.
11. WEATHER TREATED TOP PLATES AS NOTED w/ 1/2" @ A.B. @ 2'-0" STAGGERED, MIN. 6" EMBED. INTO BOND BEAM
12. STEEL FRAMING - REFER TO S102
13. HORIZONTAL BRIDGING - REFER TO S102
14. 1-1/2" H.R. METAL DECK (PAINTED) - REFER TO S102 FOR GAUGE
15. 4-1/2" ROOF INSULATION
16. ROOF
17. PREFINISHED 24 GA. METAL DRIP EDGE w/ CONTINUOUS 22 GA. GLEAT - REFER TO A201 FOR COLOR. 12" MAX. LENGTH JOINED WITH BUTT JOINTS FOR HORIZONTAL RUNS & 4" OVERLAP JOINTS FOR SLOPING RUNS.
18. WELD HORIZONTAL BRIDGING TO 2-1/2"x2-1/2"x3/16" BOLTED TO WALL w/ 1/2" @ 6" BOLTS.
19. 6" JOIST BEARING w/ BEARING PLATE & ANCHOR BOLTS. REFER TO S102. GROUT SOLID UNDER BEARING.
20. 60# EVERGLARD TPO 45 MIL. THERMOPLASTIC POLYOLEFIN SINGLE-PLY MEMBRANE SYSTEM.
21. 8" CONCRETE BLOCK w/ GALVANIZED TRUSS TYPE REINFORCING @ 16" O.C.
22. 8" BOND BEAM w/ (1) #5 BAR CONT.
23. MANUFACTURED STONE DIRECT APPLIED TO MASONRY WALL
24. 1" INSULATED GLASS IN ALUMINUM FRAME. COLOR TO MATCH EXTERIOR STOREFRONT.
25. 1/4" INSULATED GLASS IN ALUMINUM FRAME - COLOR TO MATCH EXTERIOR STOREFRONT.
26. E.L.S. 1-1/2" MIN. - REFER TO SPEC.
27. MESH DRAINAGE MATERIAL
28. FLASHING PAN WITH INTEGRAL KEEP SPOUTS
29. 1/4" GAP BETWEEN PREFINISHED METAL FLASHING AND EIFS CHANNEL WITH DRAIN HOLES

ARCHITECTS • CIVIL ENGINEERS

paradigm design

550 3 MILE N.W.
SUITE B
GRAND RAPIDS, MI 49544

PHONE (616) 785 • 5656
FAX (616) 785 • 5657
WEB PARADIGMAE.COM

PROJECT

GFS MARKETPLACE

COPLEY TOWNSHIP

TEMP 120 ROTHROCK ROAD
AKRON, OH

BLDG OWNER:

GFS MARKETPLACE REALTY FIVE, LLC

P.O. BOX 1812
GRAND RAPIDS, MI

RELEASE DATE

4-23-12	OWNER REVIEW
4-27-12	FOR PERMITS & CONSTRUCTION
5-21-12	FOR PERMITS, BIDS & CONSTRUCTION

PROJECT

1105054

SHEET

A 402

Wednesday, July 10, 2013, 11:48 AM © 1105054 GFS Copley Township OH MicroDrafting\Architecture\1402-054.dwg elk