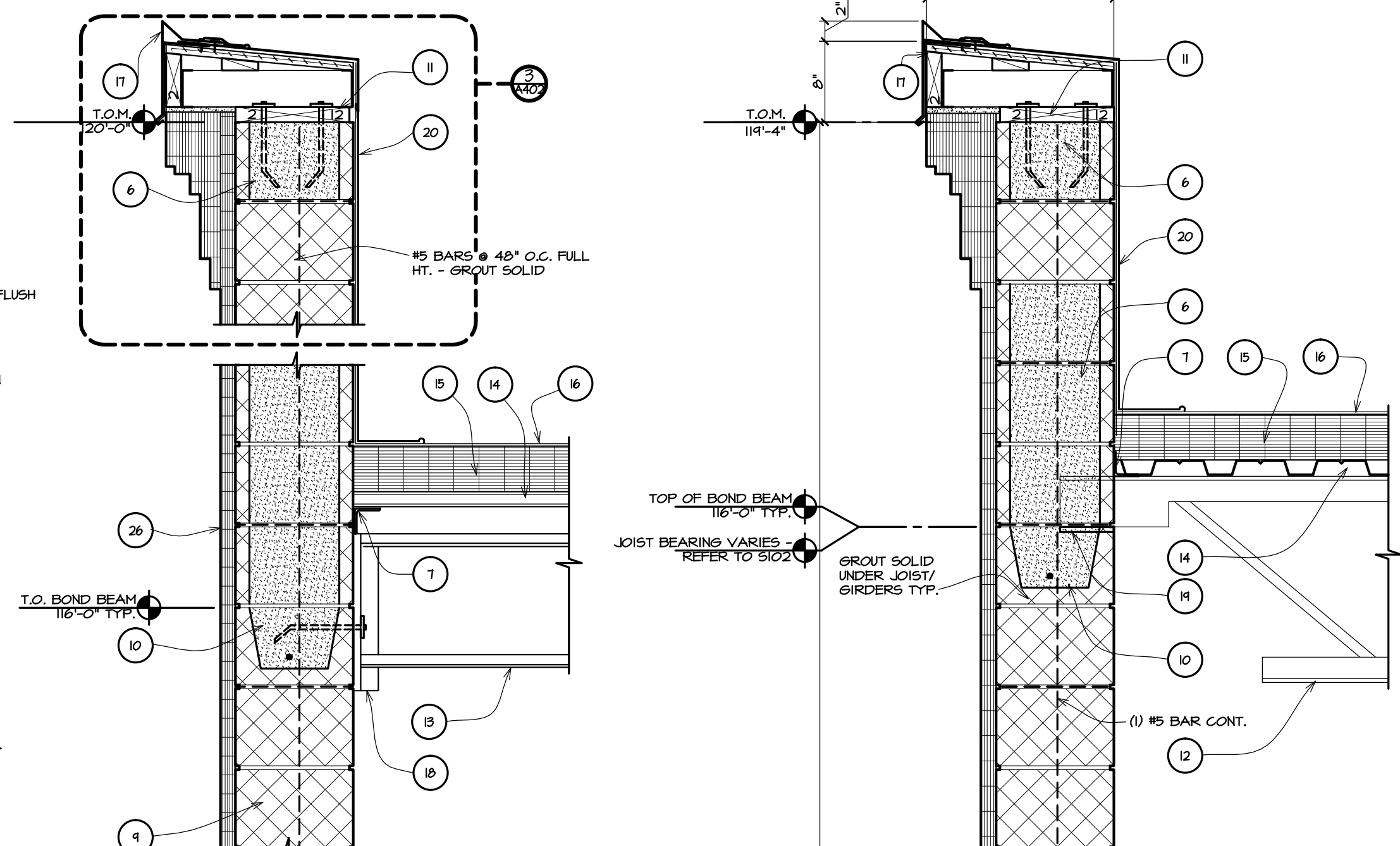
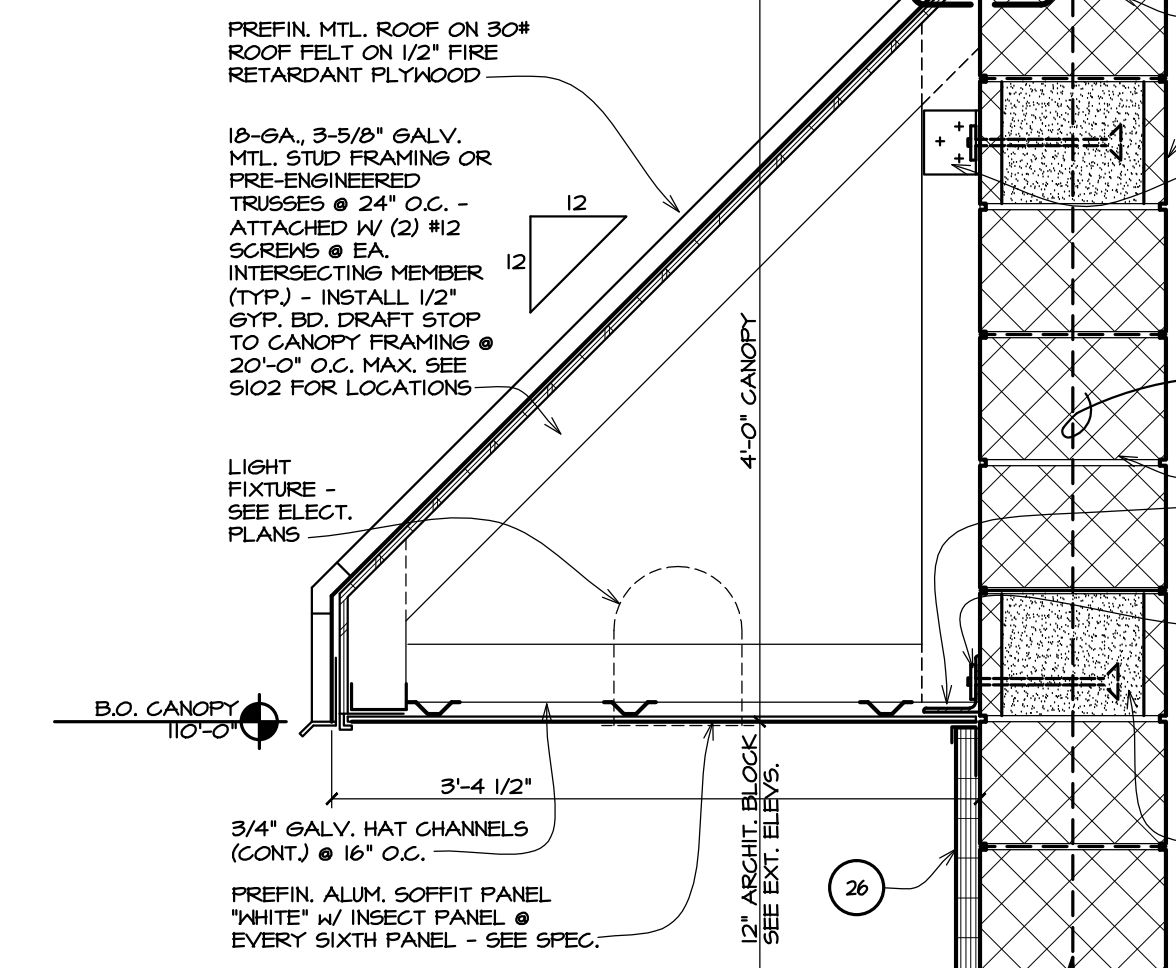


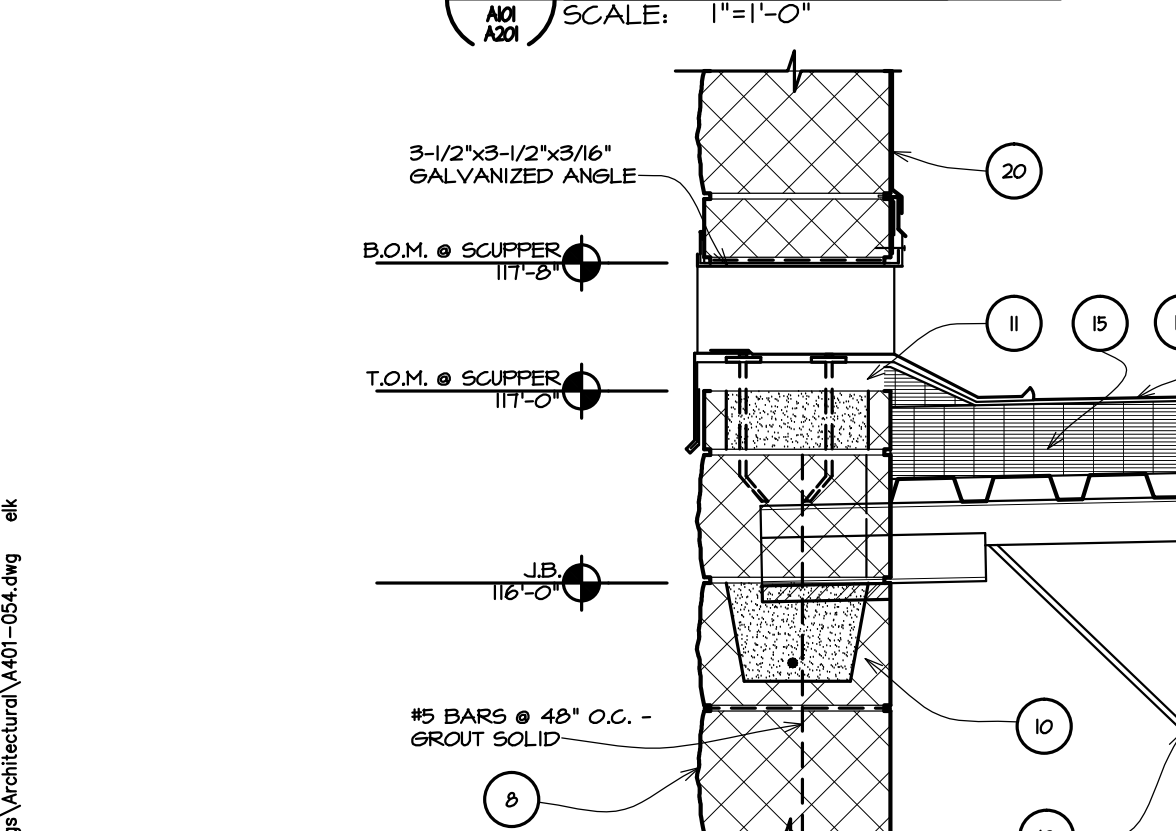
1 COL. @ ALUM. WINDOW
SCALE: 1"=1'-0"



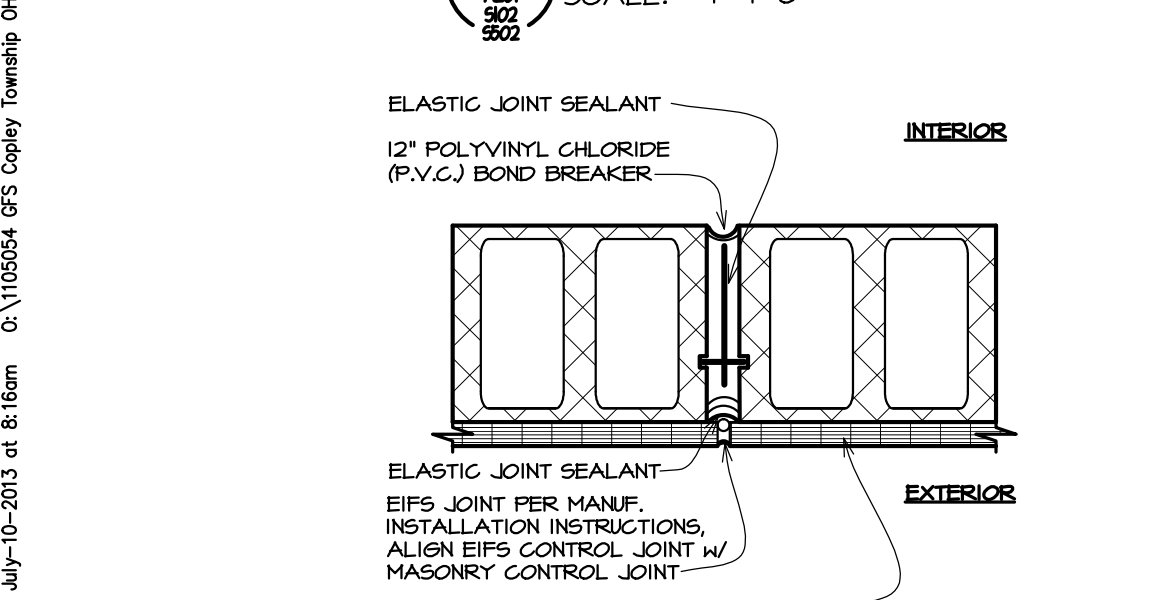
5 FRAMING DETAIL
SCALE: 1"=1'-0"



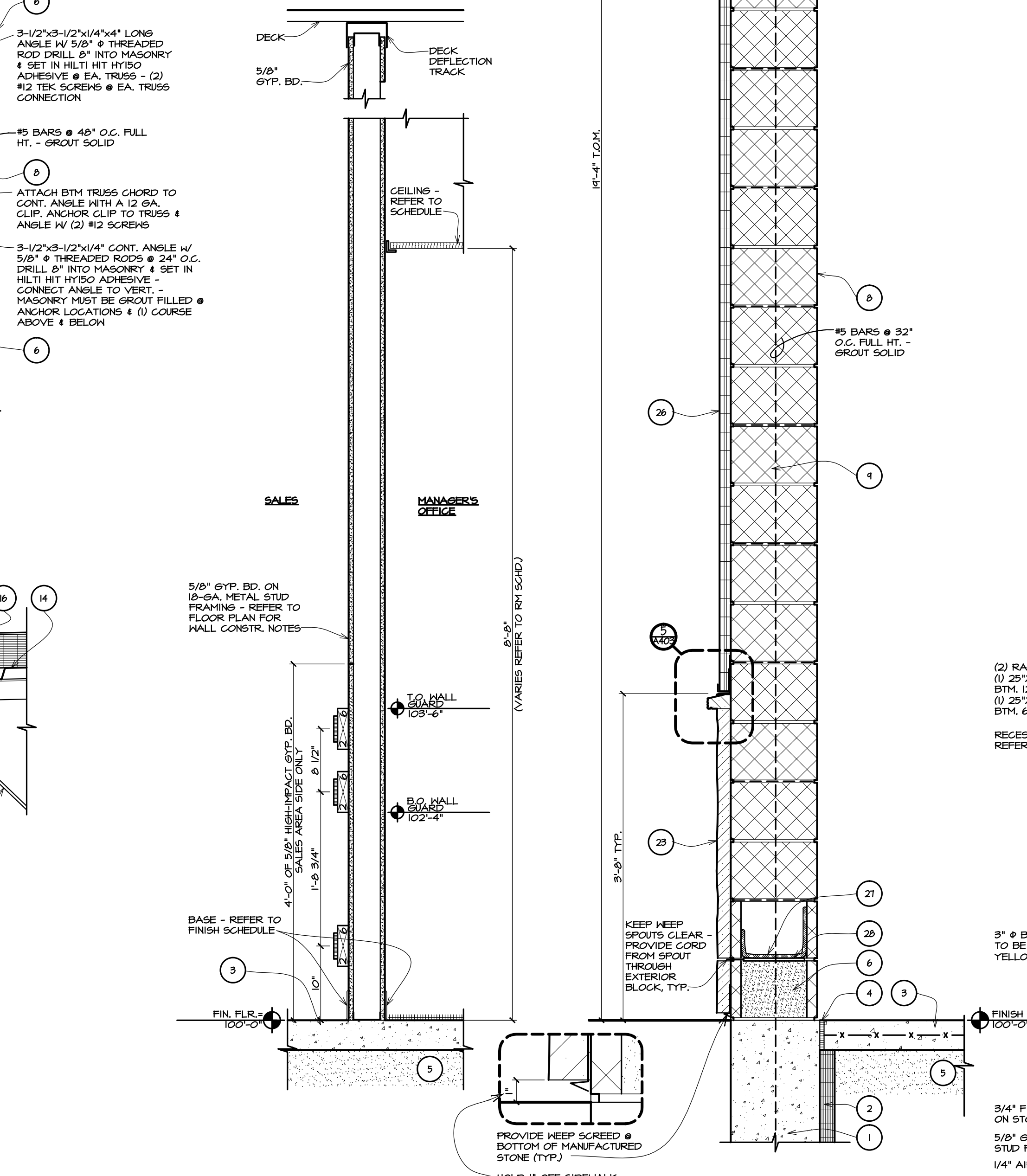
2 CANOPY/WALL DETAIL
SCALE: 1"=1'-0"



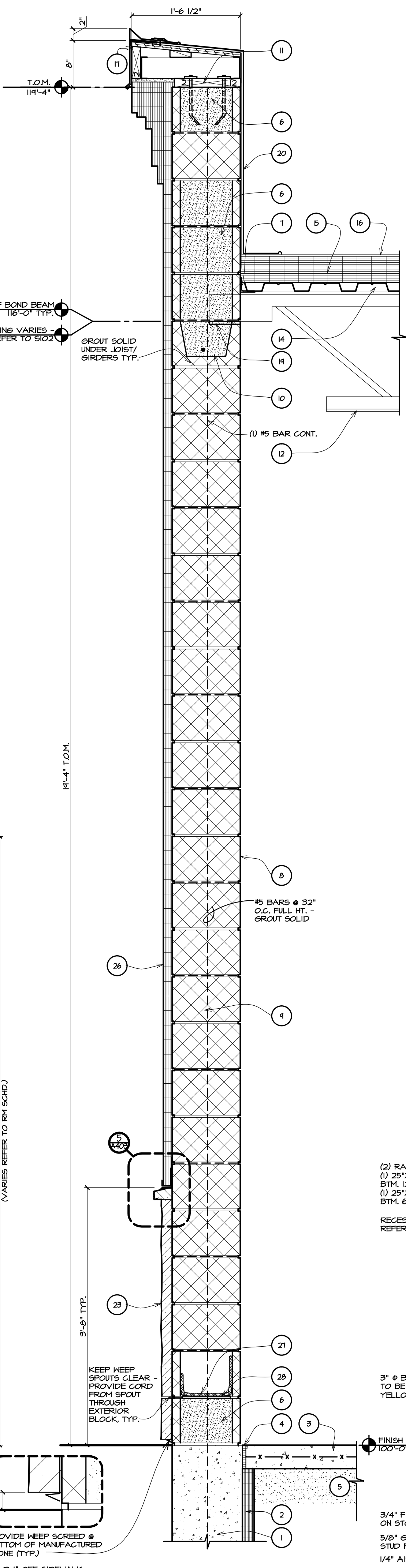
3 ROOF SCUPPER
SCALE: 1"=1'-0"



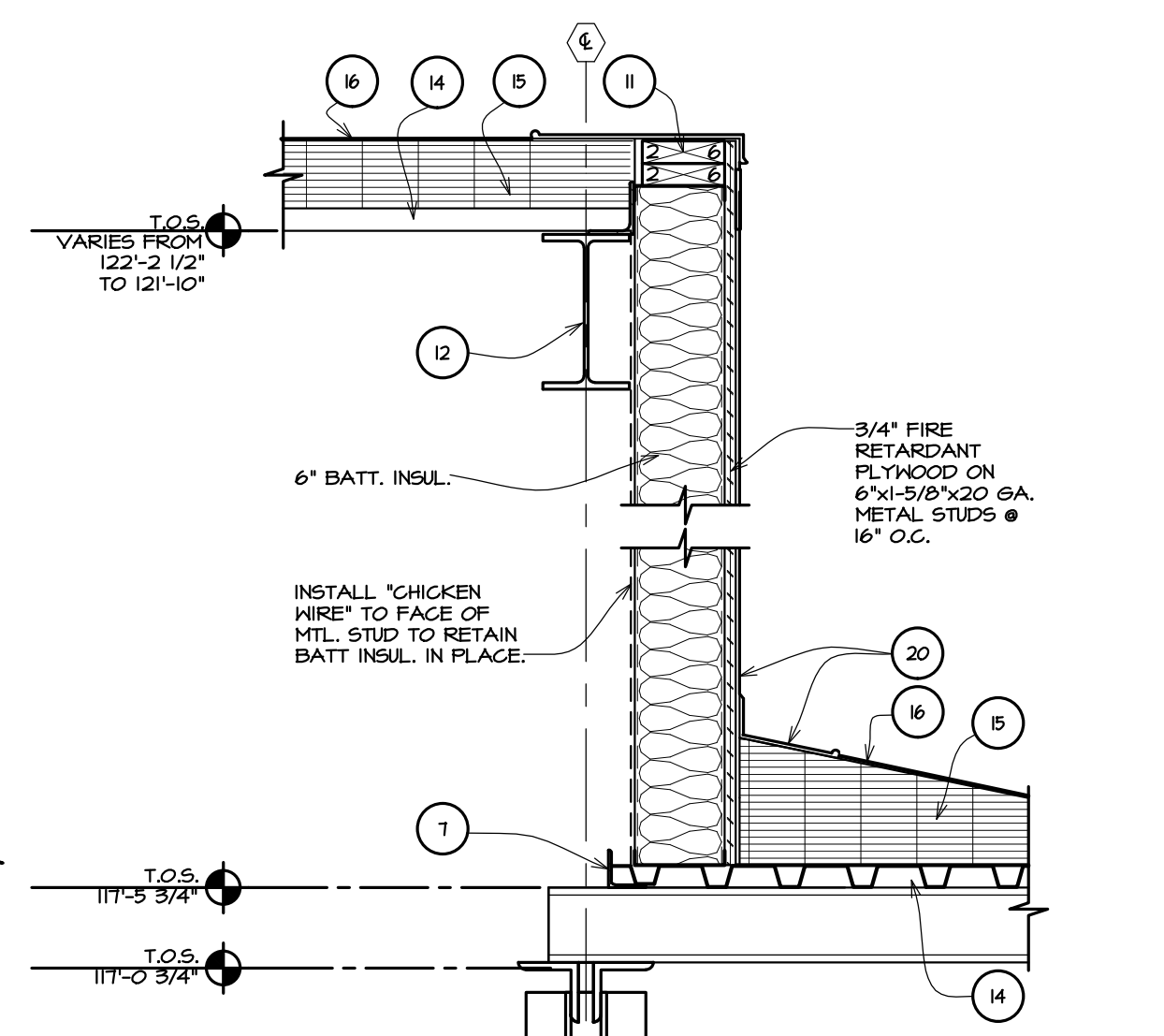
4 CONTROL JOINT
SCALE: 1"=1'-0"



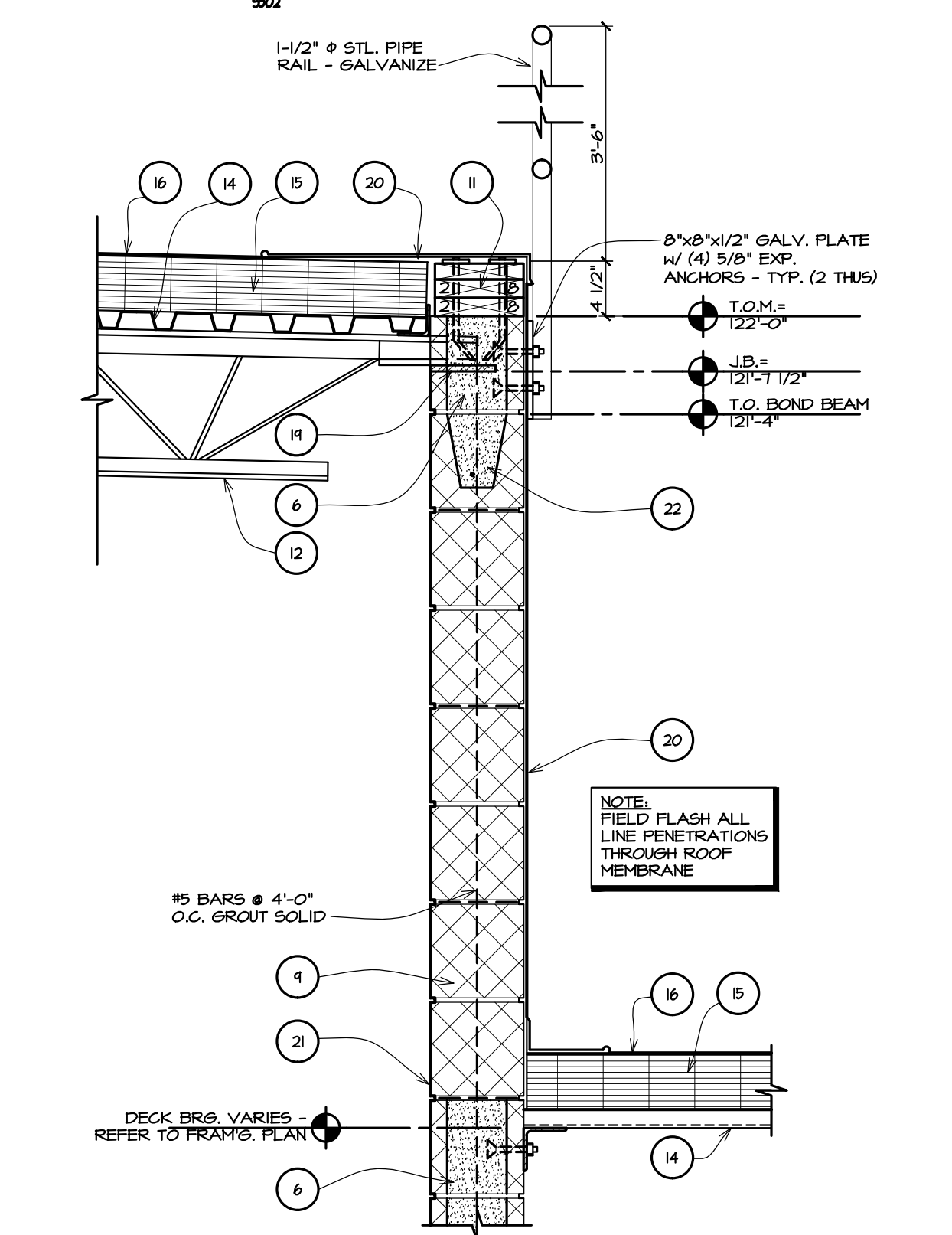
6 INTERIOR WALL
SCALE: 1"=1'-0"



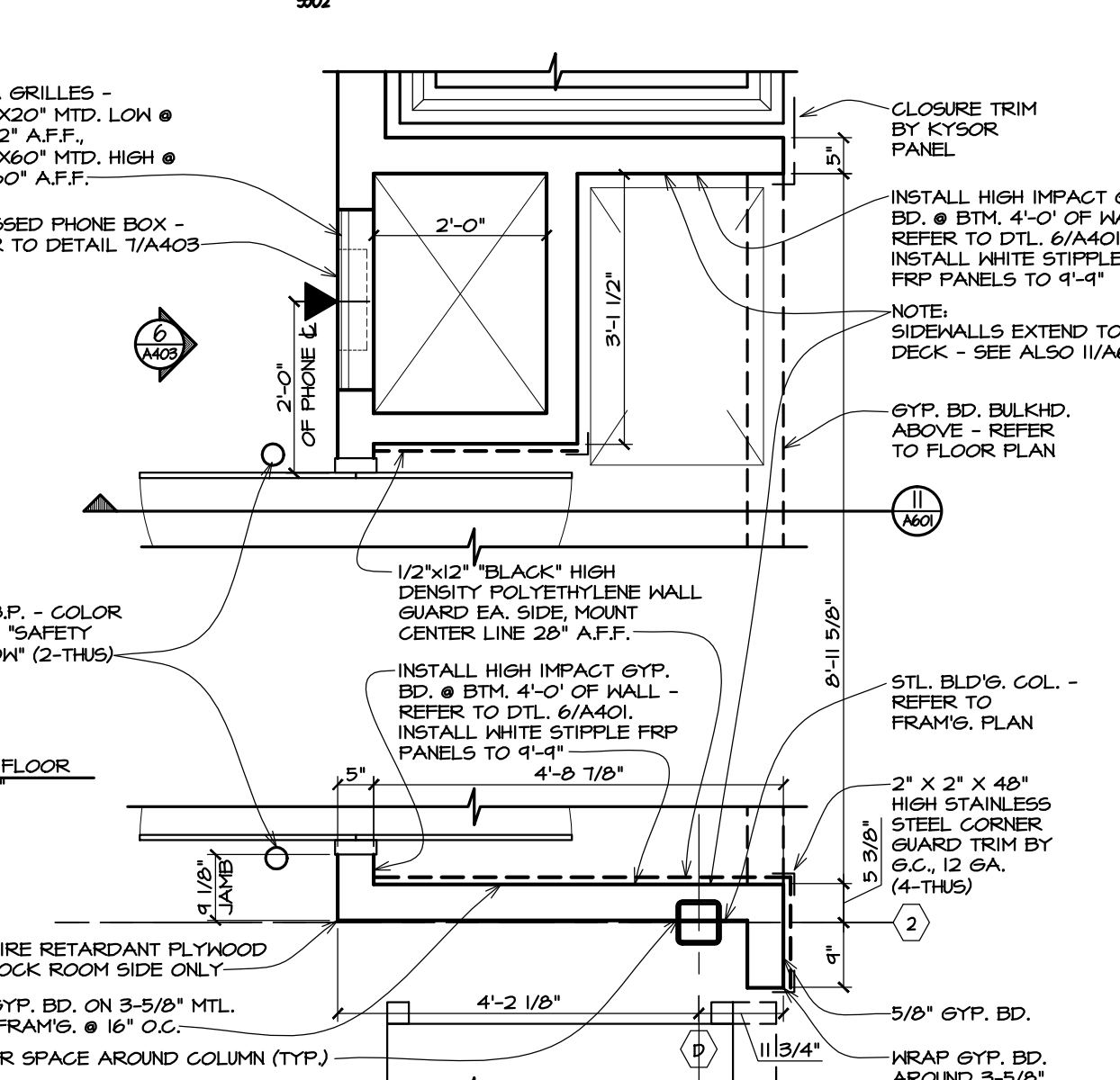
7 EXTERIOR WALL
SCALE: 1"=1'-0"



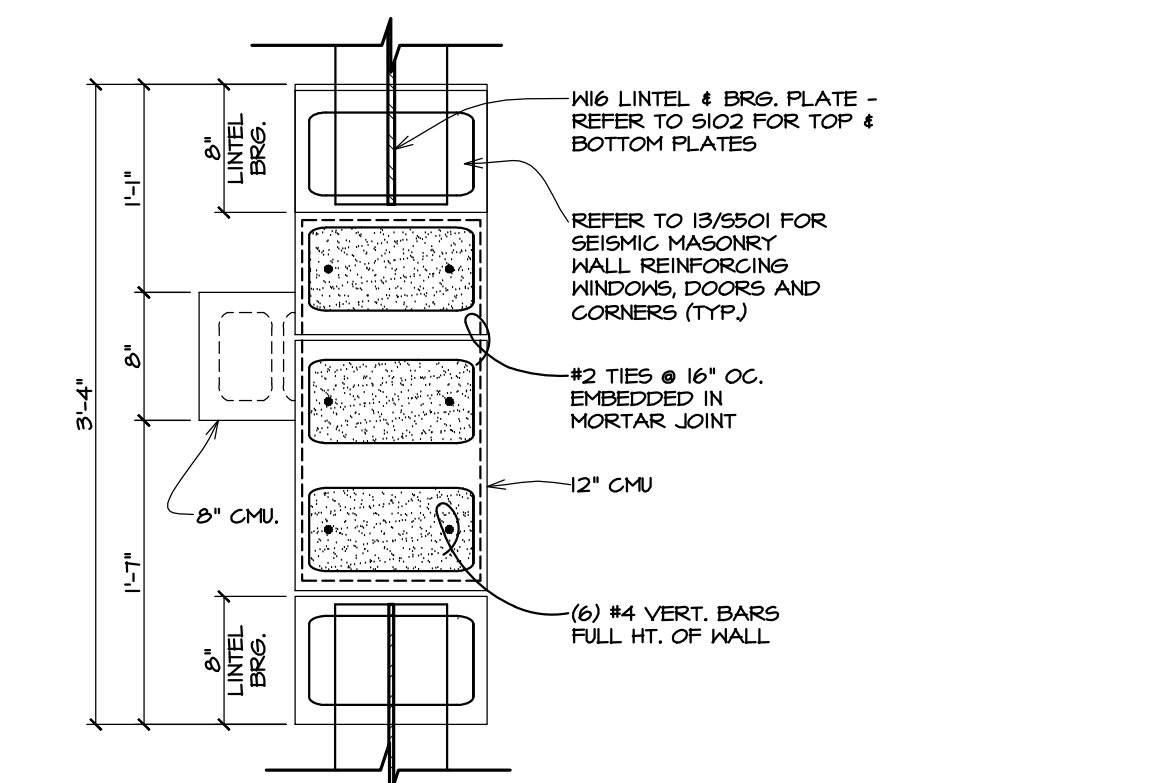
8 HIGH/LOW ROOF
SCALE: 1"=1'-0"



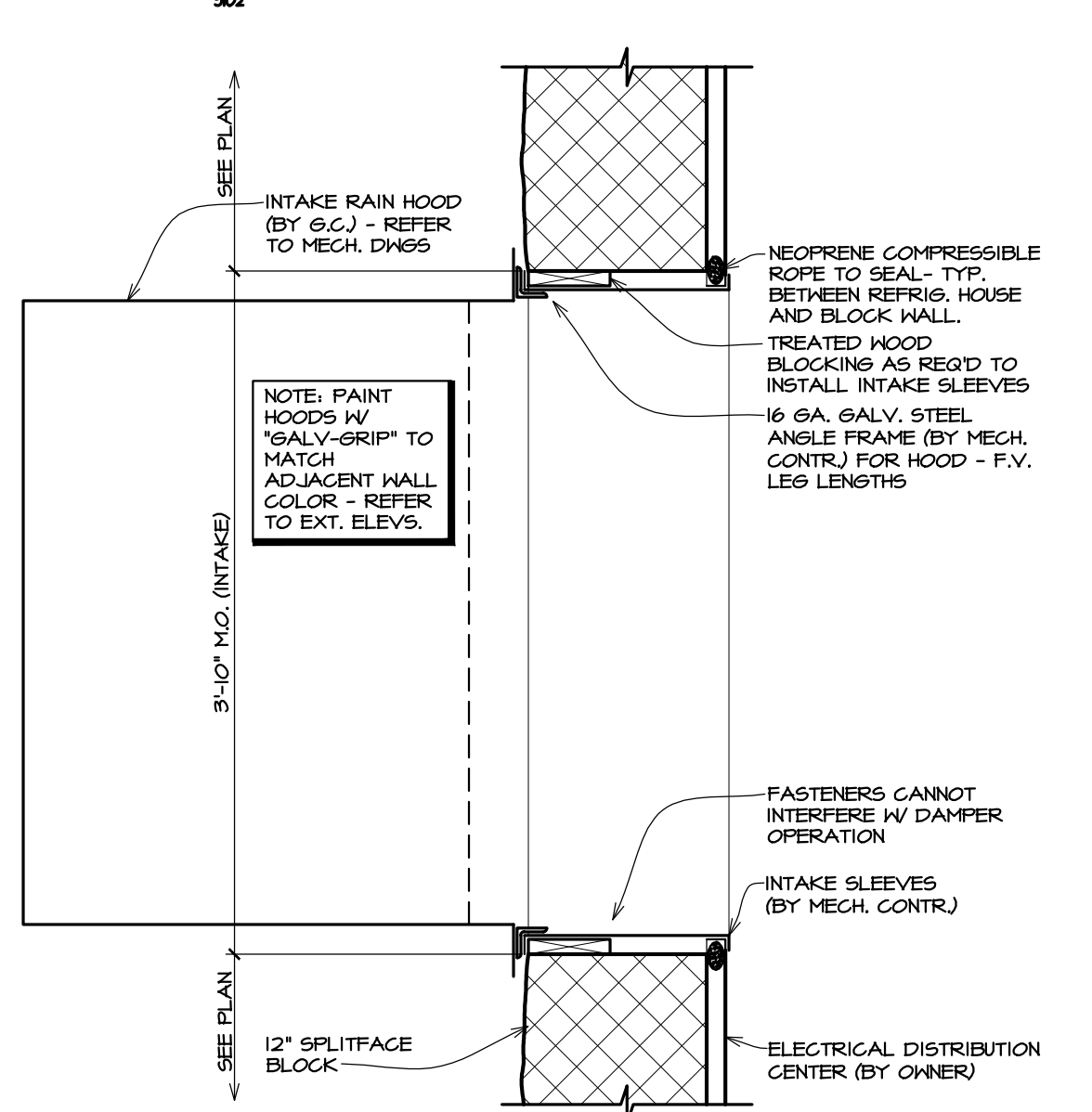
9 HIGH/LOW ROOF
SCALE: 1"=1'-0"



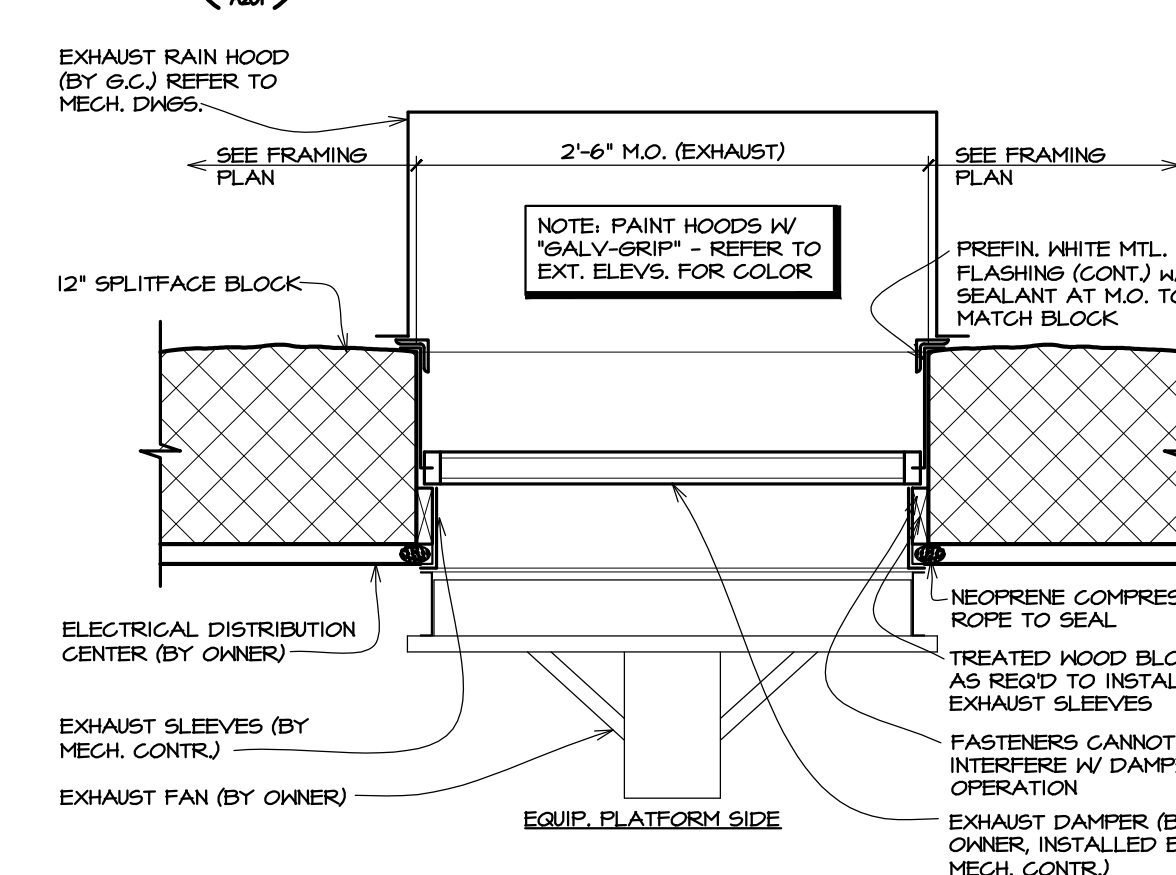
10 COL. IN STUD WALL
SCALE: 1/2"=1'-0"



11 MASONRY PIER DETAIL
SCALE: 1"=1'-0"



12 INTAKE HOOD DETAIL
SCALE: 1"=1'-0"



13 EXHAUST HOOD DETAIL
SCALE: 1"=1'-0"

- MATERIAL LIST**
- FOUNDATION - REFER TO S101
 - 2" PERIMETER INSULATION
 - 4" CONCRETE SLAB - REFER TO S101
 - 1/2" EXPANSION JOINT MATERIAL
 - COMPACTED SAND FILL - REFER TO SPEC.
 - SOLID GROUT BLOCK COURSES AS SHOWN
 - STEEL ANGLE - REFER TO S102 FOR SIZE
 - 12" CONCRETE BLOCK w/ GALVANIZED TRUSS TYPE REINFORCING @ 16" O.C.
 - FILL CORES w/ MASONRY INSULATION
 - 12" BOND BEAM w/ (1) #5 BAR CONT.
 - WEATHER TREATED TOP PLATES AS NOTED w/ 1/2" @ A.B. @ 2'-0" STAGGERED, MIN. 6" EMBED. INTO BOND BEAM
 - STEEL FRAMING - REFER TO S102
 - HORIZONTAL BRIDGING - REFER TO S102
 - 1/2" X 1/2" AIR METAL DECK (PAINTED) - REFER TO S102 FOR GAUGE
 - 4-1/2" ROOF INSULATION
 - PREFINISHED 24 GA. METAL DRIP EDGE w/ CONTINUOUS 22 GA. GLEAT - REFER TO A201 FOR COLOR. 12" MAX. LENGTH JOINED WITH BUTT JOINTS FOR HORIZONTAL RUNS @ 4" OVERLAP JOINTS FOR SLOPING RUNS
 - WELD HORIZONTAL BRIDGING TO 2-1/2"x2-1/2"x3/16" BOLTED TO WALL w/ 1/2" @ BOLTS.
 - 6" JOIST BEARINGS w/ BEARING PLATE @ ANCHOR BOLTS. REFER TO S102. GROUT SOLID LINER BEARING.
 - 6AF EVERGUARD TPO 45 MIL. THERMOPLASTIC POLYOLEFIN SINGLE-PLY MEMBRANE SYSTEM.
 - 8" CONCRETE BLOCK w/ GALVANIZED TRUSS TYPE REINFORCING @ 16" O.C.
 - 8" BOND BEAM w/ (1) #5 BAR CONT.
 - MANUFACTURED STONE DIRECT APPLIED TO MASONRY WALL
 - 1" INSULATED GLASS IN ALUMINUM FRAME. COLOR TO MATCH EXTERIOR STOREFRONT.
 - 1/4" INSULATED GLASS IN ALUMINUM FRAME - COLOR TO MATCH EXTERIOR STOREFRONT.
 - MESH DRAINAGE MATERIAL
 - EL.F.S., 1-1/2" MIN. - REFER TO SPEC.
 - FLASHING FAN WITH INTEGRAL KEEL SPOUTS
 - 1/4" GAP BETWEEN PREFINISHED METAL FLASHING AND EIFS CHANNEL WITH DRAIN HOLES

ARCHITECTS • CIVIL ENGINEERS

p d paradigm design

550 3 MILE N.W.
SUITE B
GRAND RAPIDS, MI 49544

PHONE (616) 785 • 5656
FAX (616) 785 • 5657
WEB PARADIGM.AE.COM

PROJECT

GFS MARKETPLACE

COPLEY TOWNSHIP

TEMP 120 ROTHROCK ROAD
AKRON, OH

BLDG OWNER:

GFS MARKETPLACE REALTY FIVE, LLC

P.O. BOX 1812
GRAND RAPIDS, MI

RELEASE DATE

4-23-12 OWNER REVIEW
4-27-12 FOR PERMITS & CONSTRUCTION
5-21-12 FOR PERMITS, BIDS & CONSTRUCTION

Wednesday, July 10, 2013, 4:18:58 AM C:\p01\1105054 GFS Copley Township.dwg (Architectural) (M01-054.dwg) dlk