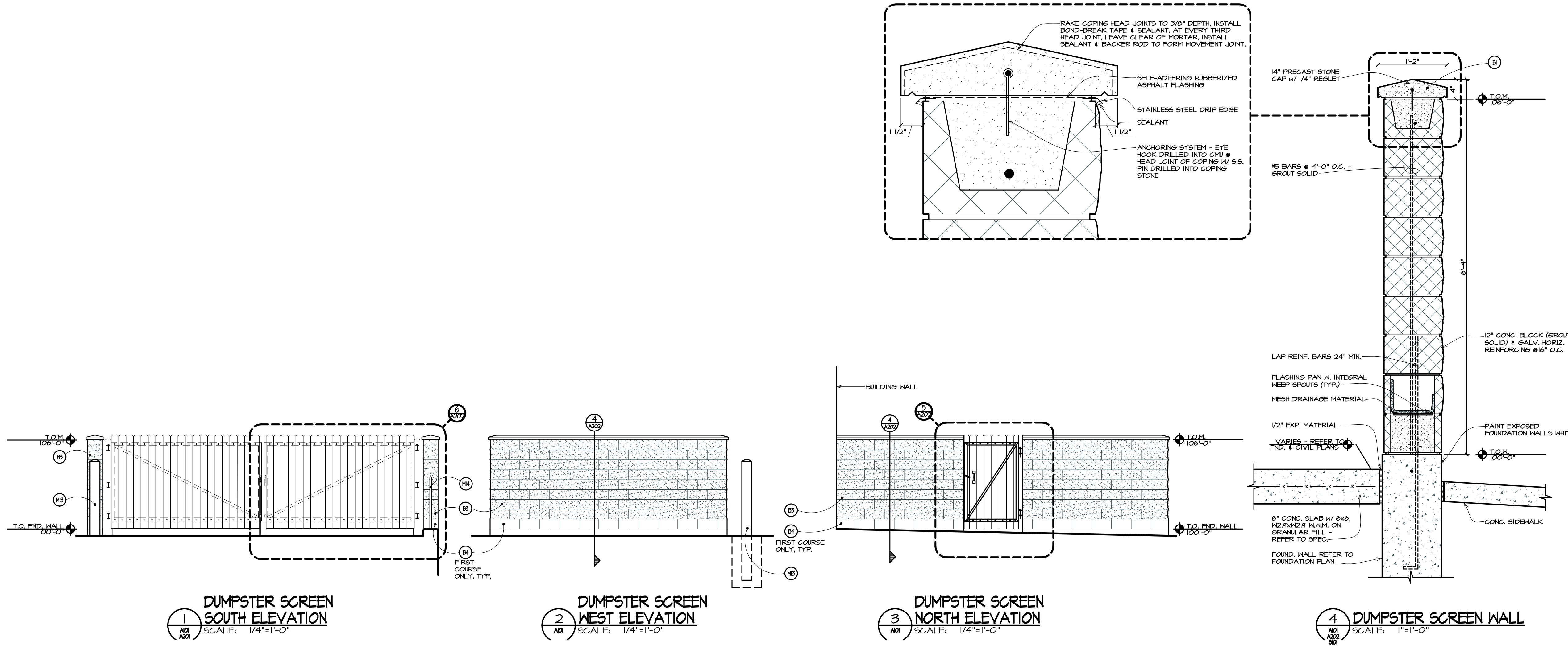
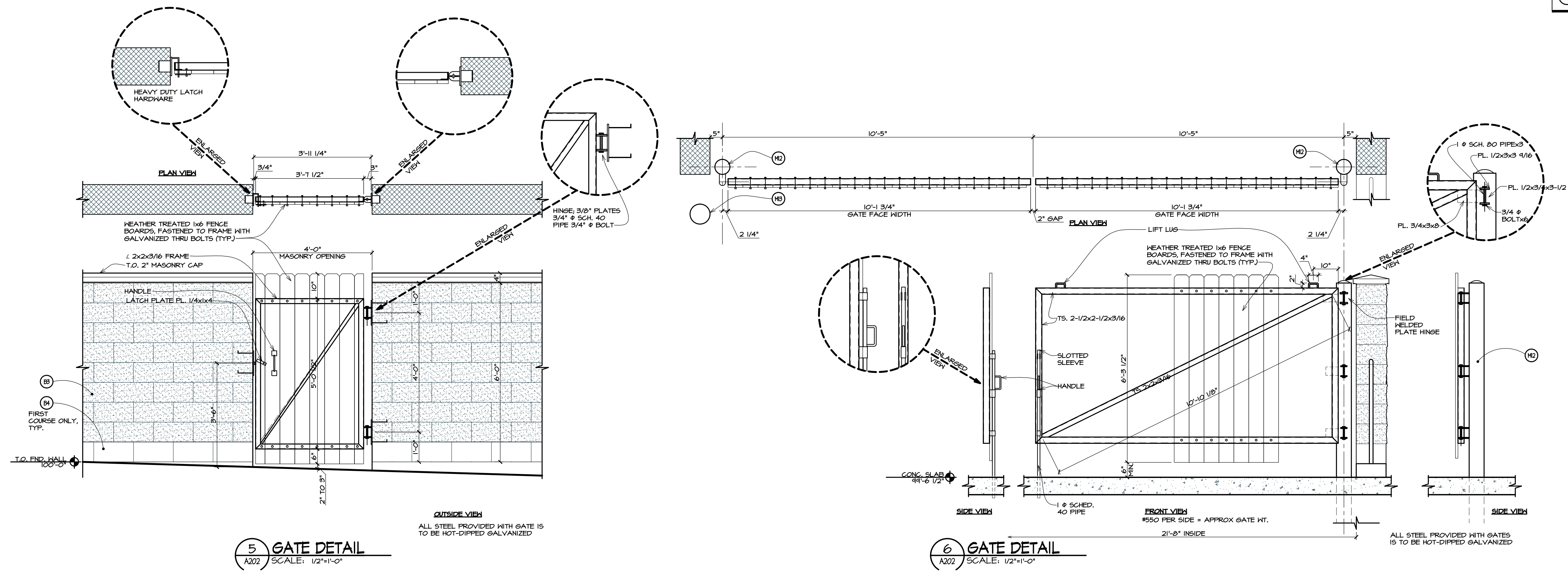


Wednesday, July 10, 2013, 11:23am © 1105054 GFS Copley Township (Paradigm) Architecture V202-054.dwg



MATERIAL LEGEND

- (B) PRECAST CONCRETE COPING, 1000 PSI MIN. - COLOR TO BE "NATURAL GRAY", RAKE JOINTS AND FILL WITH SEALANT FOR ALL PRECAST CONCRETE JOINTS
- (B2) SYNTHETIC STONE BY BOULDER CREEK "S4085-T COUNTRY LEDGE WEST CHESTER", WITH CHISEL FACED SILL - BOULDER CREEK "SLASHING TYP."
- (B3) SPLITFACE CONCRETE BLOCK BY HW INTEGRAL WATER REPELLANT SYSTEM BY RHEOPEL - COLOR TO MATCH STG #1030B "PEARL"
- (B4) SMOOTH FACE CONCRETE BLOCK BY HW INTEGRAL WATER REPELLANT SYSTEM BY RHEOPEL - COLOR TO MATCH STG #1030B "PEARL"
- (E) EXTERIOR INSULATION FINISH SYSTEM (E.I.F.S.) COLOR TO BE STG #1030B "PEARL"
- (F) 1" INSULATED GLASS IN CLEAR ANODIZED ALUMINUM FRAME
- (F2) AUTOMATIC ALUMINUM ENTRY SYSTEM IN CLEAR ANODIZED FRAMING W/ 5/8" GLASS IN DOORS AND 3/8" INSULATED GLASS IN SIDELITES (TEMPERED WHERE NOTED)
- (M) PREFINISHED METAL CAP FLASHING - COLOR TO MATCH BERRIDGE "DEEP RED"
- (M2) PREFINISHED STANDING SEAM METAL ROOF PANELS - COLOR TO MATCH BERRIDGE "DEEP RED" - PROVIDE SNOW GUARD OVER ENTRY.
- (M3) PREFINISHED VERTICAL RIBBED METAL PANELS TO MATCH STG #1030B "PEARL"
- (M4) SURFACE MOUNTED SIGN PROVIDED BY OWNER. COORDINATE WITH SIGN CO. S.C. TO OBTAIN SIGN TEMPLATE & J.B. LOCATIONS.
- (M5) GOOSE NECK LIGHT FIXTURE - COLOR TO BE "BLACK" - REFER TO ELECTRICAL PLANS
- (M6) LIGHT, REFER TO ELECTRICAL PLANS. (AT SPLITFACE BLOCK WALL LOCATIONS) - (U) BLOCK OF SMOOTHFACE CONCRETE BLOCK - COLOR TO MATCH ADJACENT WALL FINISH W/ MIDPOINT SCORE FOR MOUNTING OF LIGHT FIXTURE (TYP).
- (M7) VERTICAL TERMINATION BAR FOR T.P.O. MEMBRANE THERMOPLASTIC POLYOLEFIN FLASHING
- (M8) STEEL HIGH/LOW ROOF LADDER - SEE DETAIL 11/5501, GALVANIZED
- (M1) STEEL GUARD RAIL AT ROOF HATCH - SEE DETAIL 41/A401, GALVANIZED
- (M0) DOCK SEAL
- (M1) OVERHEAD DOOR
- (M2) 6" BUMP POST - PAINT "SAFETY RED"
- (M3) 8" BUMP POST - PAINT "SAFETY RED"
- (M4) 1-1/2" Ø METAL GUARDRAIL - GALVANIZED
- (M5) GAS METER - REFER TO MECHANICAL DRAWINGS
- (M6) INTAKE RAIN HOOD (BY MECHANICAL CONTRACTOR), PAINT TO MATCH ADJACENT FINISH - SEE DETAIL 12/A401
- (M7) EXHAUST LOUVER/RAIN HOOD (BY MECHANICAL CONTRACTOR), PAINT TO MATCH ADJACENT FINISH - SEE DETAIL 12/A401
- (M8) 24"x24" MECH. LOUVER, BY MECHANICAL CONTRACTOR - PAINT TO MATCH ADJACENT FINISH
- (M9) CONDENSER UNIT - REFER TO MECHANICAL DWGS.
- (M0) 3'-6" X 6'-0" GALVANIZED FENCE
- (R) ROOF MEMBRANE - REFER TO SPECIFICATIONS



ARCHITECTS • CIVIL ENGINEERS

p
d

paradigm
design

550 3 MILE N.W.
SUITE B
GRAND RAPIDS, MI 49544

PHONE (616) 785 - 5656
FAX (616) 785 - 5657
WEB PARADIGMAE.COM

PROJECT

GFS
MARKETPLACE

COPLEY
TOWNSHIP

TEMP 120 ROTHROCK ROAD
AKRON, OH

BLDG OWNER:

GFS MARKETPLACE
REALTY FIVE, LLC

P.O. BOX 1812
GRAND RAPIDS, MI

RELEASE DATE

4-23-12	OWNER REVIEW
4-27-12	FOR PERMITS & CONSTRUCTION
5-21-12	FOR PERMITS, BIDS & CONSTRUCTION
5-29-12	ADDENDUM #1

PROJECT

1105054

SHEET

A 202