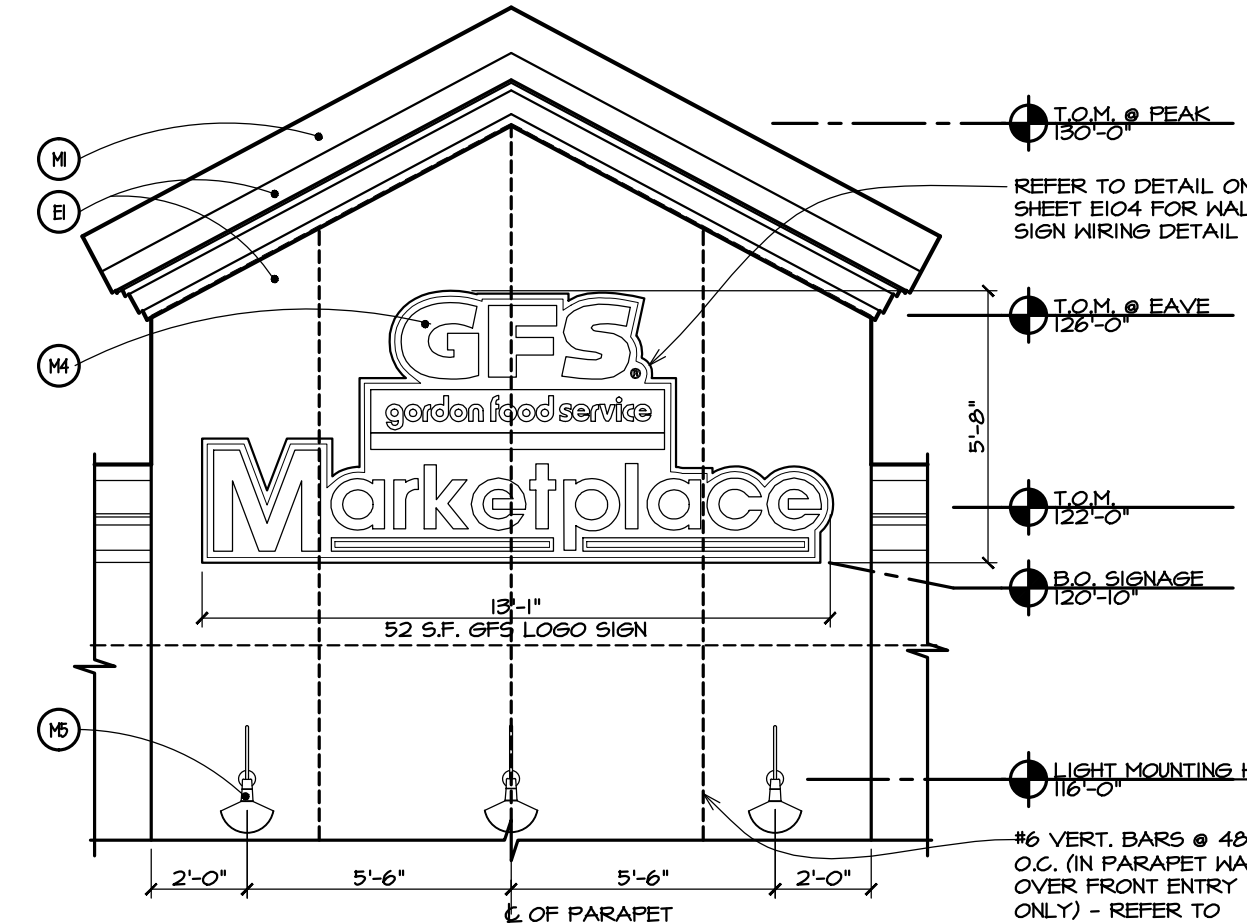
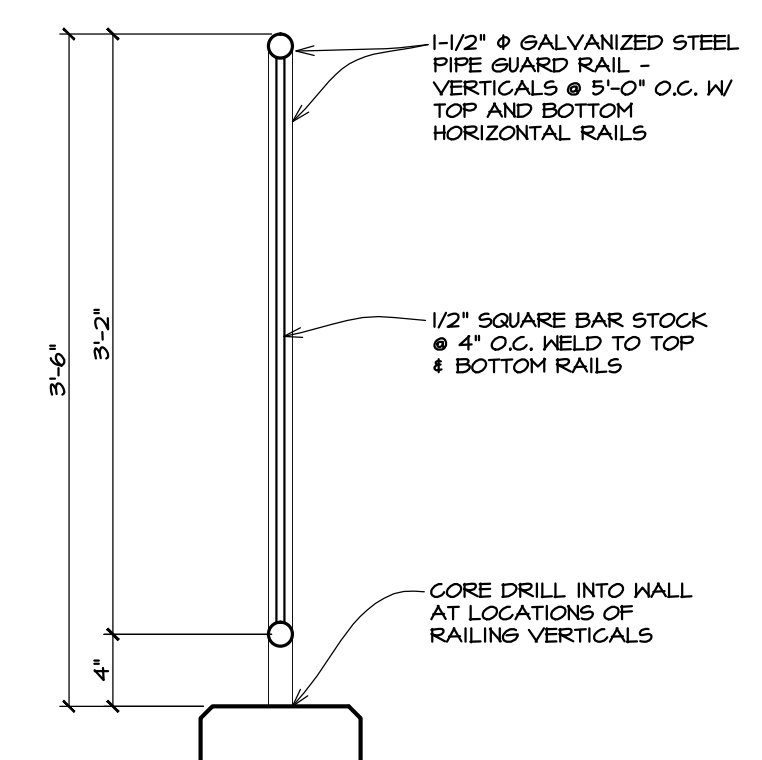


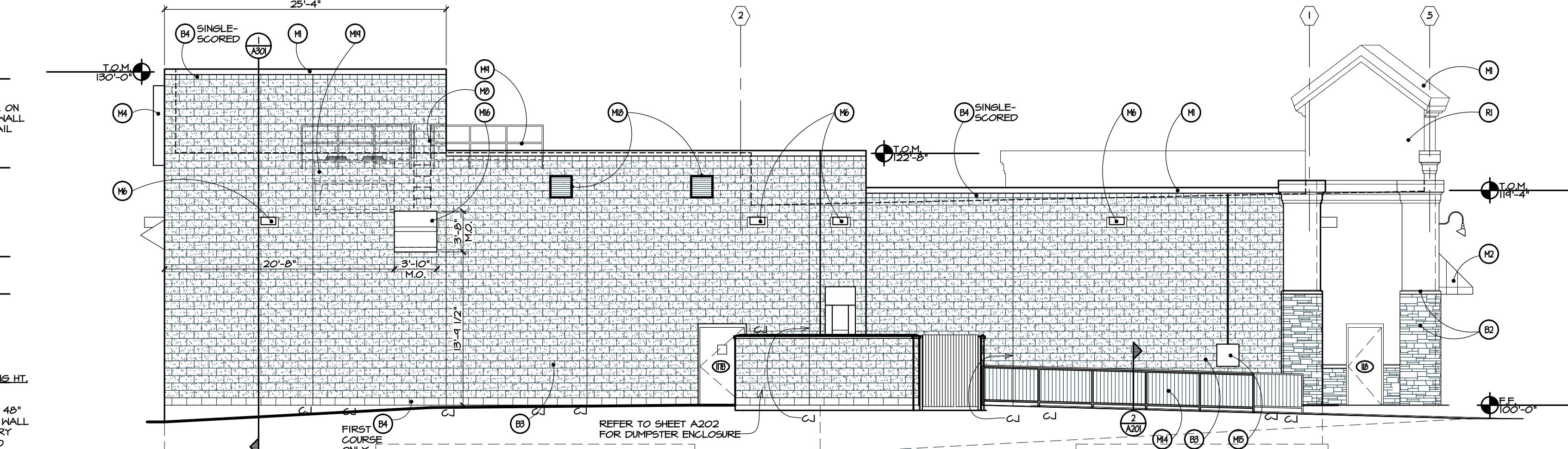
SOUTH ELEVATION
SCALE: 1/8"=1'-0"



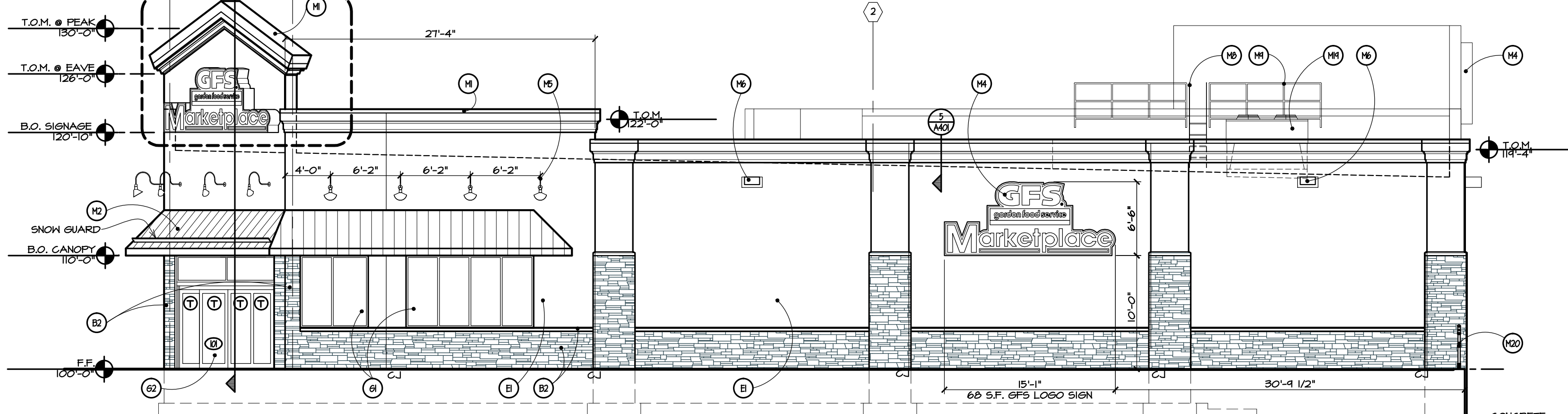
1 SIGN ELEVATION ABOVE ENTRY
SCALE: 1/4"=1'-0"



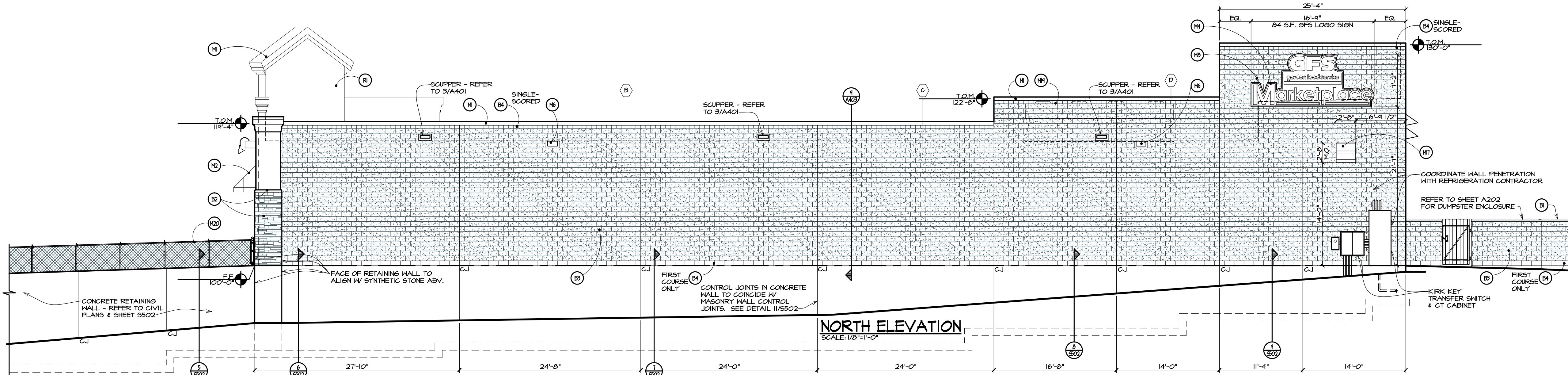
2 GUARD RAIL DETAIL
SCALE: 1"=1'-0"



WEST ELEVATION
SCALE: 1/8"=1'-0"



EAST ELEVATION
SCALE: 1/8"=1'-0"



NORTH ELEVATION
SCALE: 1/8"=1'-0"

MATERIAL LEGEND

- (B1) PRECAST CONCRETE COPING, 1000 PSI MIN. - COLOR TO BE 'NATURAL GRAY', RAKE JOINTS AND FILL WITH SEALANT FOR ALL PRECAST CONCRETE JOINTS
- (B2) SYNTHETIC STONE BY BOULDER CREEK "SHIPS-I COUNTRY LEDGE-NEST CHESTER", WITH CHESEL FACED SILL - BOULDER CREEK "SLGH-BIS TIVOLI"
- (B3) SPLITFACE CONCRETE BLOCK BY W/ INTEGRAL WATER REPELLANT SYSTEM BY RHEOPEL - COLOR TO MATCH STO #1030B "PEARL"
- (B4) SMOOTH FACE CONCRETE BLOCK BY W/ INTEGRAL WATER REPELLANT SYSTEM BY RHEOPEL - COLOR TO MATCH STO #1030B "PEARL"
- (B5) EXTERIOR INSULATION FINISH SYSTEM (EIF-S) COLOR TO BE STO #1030B "PEARL"
- (B6) 1" INSULATED GLASS IN CLEAR ANODIZED ALUMINUM FRAME
- (B7) AUTOMATIC ALUMINUM ENTRY SYSTEM IN CLEAR ANODIZED FRAMING W/ 5/8" GLASS IN DOORS AND 5/8" INSULATED GLASS IN SIDELITES (REFER HEREIN NOTES)
- (B8) PREFINISHED METAL CAP FLASHING - COLOR TO MATCH BERRIDGE "DEEP RED"
- (B9) PREFINISHED STANDING SEAM METAL ROOF PANELS - COLOR TO MATCH BERRIDGE "DEEP RED" - PROVIDE SNOW GUARD OVER ENTRY.
- (B10) PREFINISHED VERTICAL RIBBED METAL PANELS TO MATCH STO #1030B "PEARL"
- (B11) SURFACE MOUNTED SIGN PROVIDED BY OWNER. COORDINATE WITH SIGN CO. S.C. TO OBTAIN SIGN TEMPLATE & J.B. LOCATIONS.
- (B12) GOOSE NECK LIGHT FIXTURE - COLOR TO BE "BLACK" - REFER TO ELECTRICAL PLANS
- (B13) LIGHT, REFER TO ELECTRICAL PLANS. (AT SPLITFACE BLOCK WALL LOCATIONS) - (1) BLOCK OF SMOOTHFACE CONCRETE BLOCK - COLOR TO MATCH ADJACENT WALL FINISH W/ MIDPOINT SCORE FOR MOUNTING OF LIGHT FIXTURE, (TYP.)
- (B14) VERTICAL TERMINATION BAR FOR T.P.O. MEMBRANE THERMOPLASTIC POLYOLEFIN FLASHING
- (B15) STEEL HIGH/LOW ROOF LADDER - SEE DETAIL 1/5501, GALVANIZED
- (B16) STEEL GUARD RAIL AT ROOF HATCH - SEE DETAIL 1/4401, GALVANIZED
- (B17) DOCK SEAL
- (B18) OVERHEAD DOOR
- (B19) 6" BUMP POST - PAINT "SAFETY RED"
- (B20) 8" BUMP POST - PAINT "SAFETY RED"
- (B21) 1/2" Ø METAL GUARDRAIL - GALVANIZED
- (B22) GAS METER - REFER TO MECHANICAL DRAWINGS
- (B23) INTAKE RAIN HOOD (BY MECHANICAL CONTRACTOR), PAINT TO MATCH ADJACENT FINISH - SEE DETAIL 12/A401
- (B24) EXHAUST LOUVER/RAIN HOOD (BY MECHANICAL CONTRACTOR), PAINT TO MATCH ADJACENT FINISH - SEE DETAIL 15/A401
- (B25) 24"x24" MECH. LOUVER BY MECHANICAL CONTRACTOR - PAINT TO MATCH ADJACENT FINISH
- (B26) CONDENSER UNIT - REFER TO MECHANICAL DWGS.
- (B27) 3'-6" X 6'-0" GALVANIZED FENCE
- (B28) ROOF MEMBRANE - REFER TO SPECIFICATIONS

NOTES:

REFER TO SHEET S501 FOR REQUIRED SEISMIC REINF. AT MASONRY OPENINGS
ALL EXTERIOR MASONRY WALLS AND MORTAR CONTAIN INTEGRAL WATER REPELLANT SYSTEM - RHEOPEL OR EQUAL.

SIGNAGE AREA	
SOUTH ELEVATION	= 52 SQ. FT.
WEST ELEVATION	= 0 SQ. FT.
EAST ELEVATION	= 66 SQ. FT.
NORTH ELEVATION	= 24 SQ. FT.
TOTAL	= 204 SQ. FT.

ARCHITECTS • CIVIL ENGINEERS

paradigm design

550 3 MILE N.W.
SUITE B
GRAND RAPIDS, MI 49544

PHONE (616) 785 - 5656
FAX (616) 785 - 5657
WEB PARADIGMAE.COM

PROJECT

GFS MARKETPLACE

COPLEY TOWNSHIP

TEMP 120 ROTHROCK ROAD
AKRON, OH

BLDG OWNER:

GFS MARKETPLACE REALTY FIVE, LLC

P.O. BOX 1812
GRAND RAPIDS, MI

RELEASE DATE

2-6-12	FOR TOWNSHIP REVIEW
4-23-12	OWNER REVIEW
4-27-12	FOR PERMITS & CONSTRUCTION
5-21-12	FOR PERMITS, BIDS & CONSTRUCTION

PROJECT

1105054

SHEET

A 201