

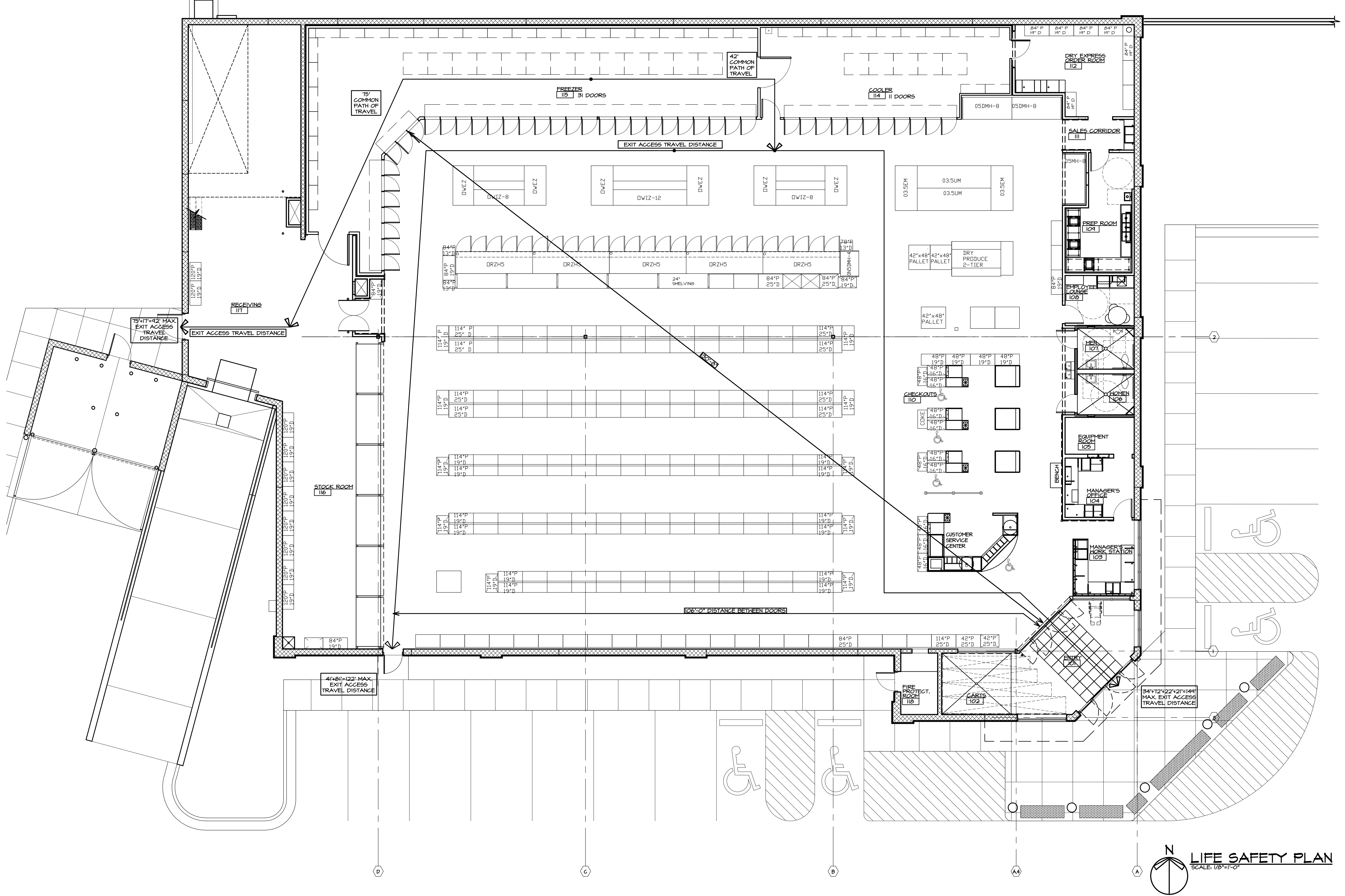
LIFE SAFETY PLAN  
 OHIO BUILDING CODE 2011  
 MERCANTILE, IIB, AUTOMATIC SPRINKLER SYSTEM IN ACCORDANCE TO NFPA 13

SECTION 1005.1 MINIMUM REQUIRED EGRESS WIDTH.  
 TABLE 1005.1 - MERCANTILE WITH SPRINKLER SYSTEM.  
 OTHER EGRESS COMPONENTS (INCH PER OCCUPANT) = .2

321 OCCUPANTS X .2 = 64.2" REQUIRED  
 156" PROVIDED

SECTION 1014.3 COMMON PATH OF EGRESS TRAVEL = 75'

SECTION 1016.1 EXIT ACCESS TRAVEL DISTANCE  
 TABLE 1016.1 - MERCANTILE WITH SPRINKLER SYSTEM IS 250'



LIFE SAFETY PLAN  
 SCALE: 1/8"=1'-0"

ARCHITECTS • CIVIL ENGINEERS

**pd** paradigm design

550 3 MILE N.W.  
 SUITE B  
 GRAND RAPIDS, MI 49544

PHONE (616) 785 • 5656  
 FAX (616) 785 • 5657  
 WEB PARADIGMAE.COM

PROJECT

**GFS MARKETPLACE**

COPLEY TOWNSHIP

TEMP 120 ROTHROCK ROAD  
 AKRON, OH

BLDG OWNER:

**GFS MARKETPLACE REALTY FIVE, LLC**

P.O. BOX 1812  
 GRAND RAPIDS, MI

RELEASE DATE

4-23-12 OWNER REVIEW  
 4-27-12 FOR PERMITS & CONSTRUCTION  
 5-21-12 FOR PERMITS, BIOS & CONSTRUCTION

PROJECT

1105054

SHEET

**A100**

Wednesday, July 10, 2013 11:09 AM C:\Users\pdr\Documents\1105054\1105054.dwg elk