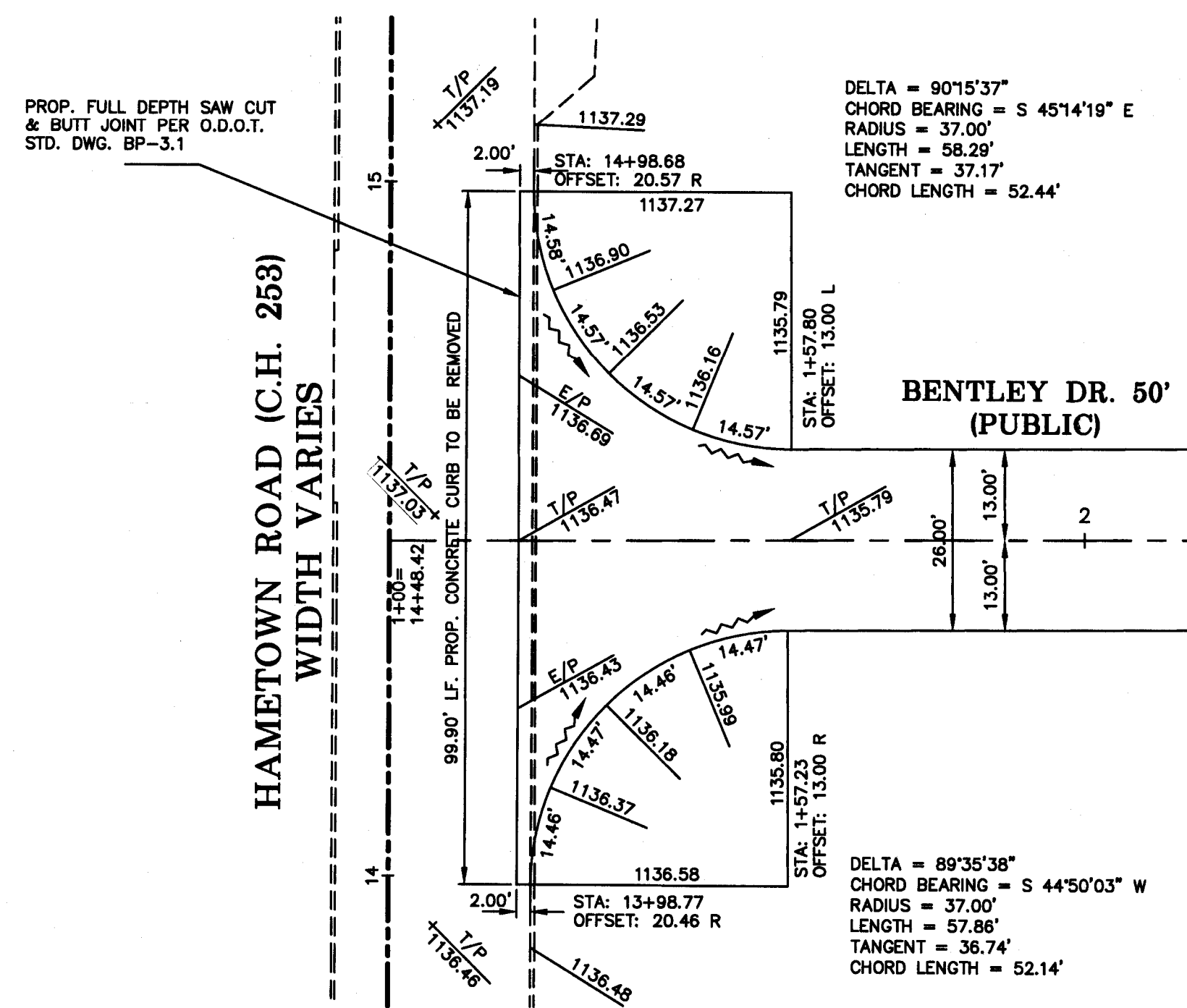
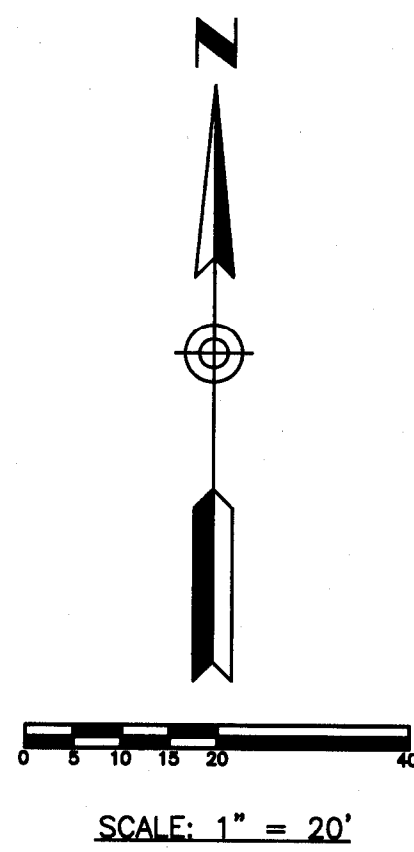


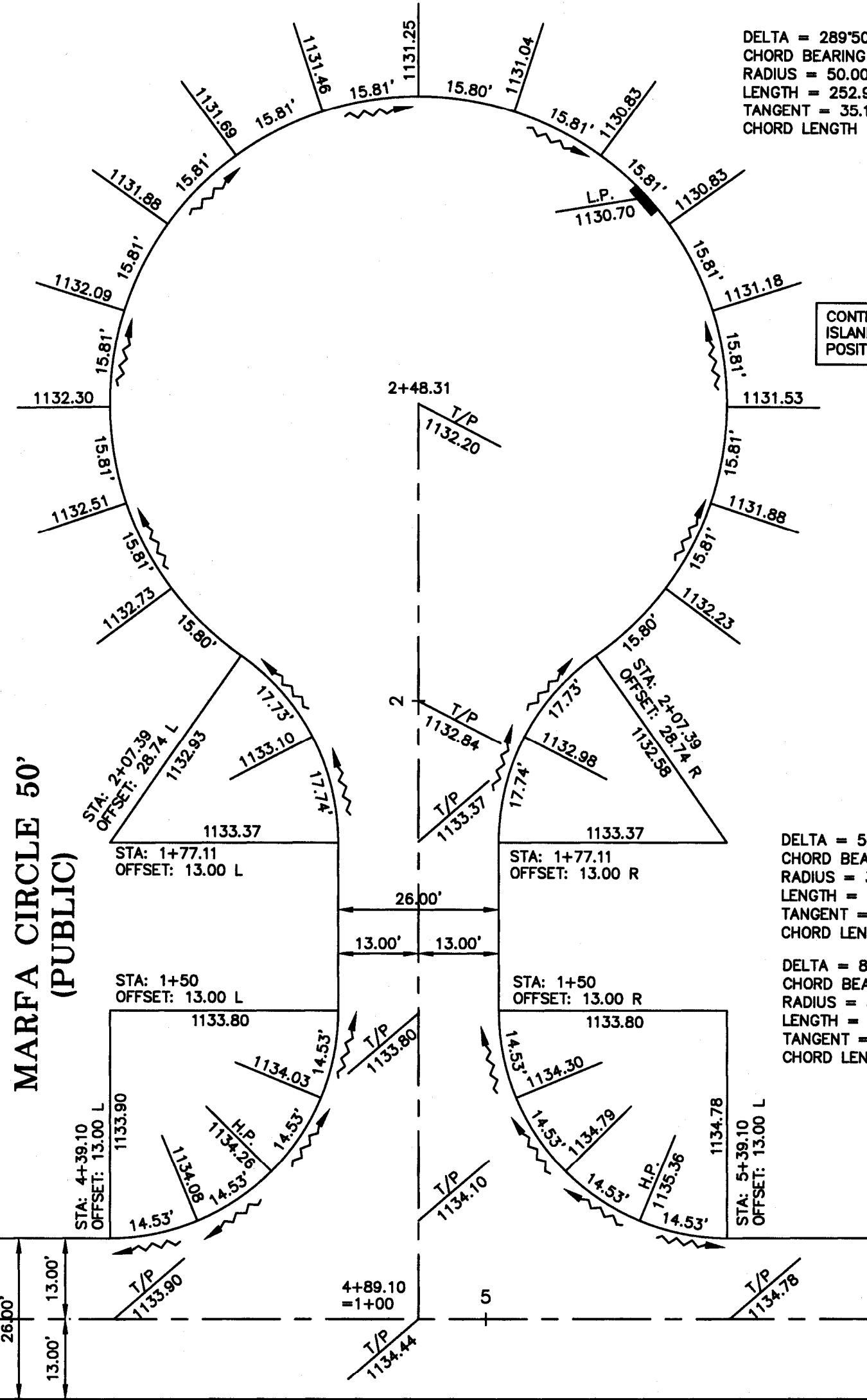
LEGEND

T/P TOP OF PAVEMENT
E/P EDGE OF PAVEMENT

NOTE:
ALL SPOT GRADES ARE TOP OF CURB
UNLESS OTHERWISE NOTED.

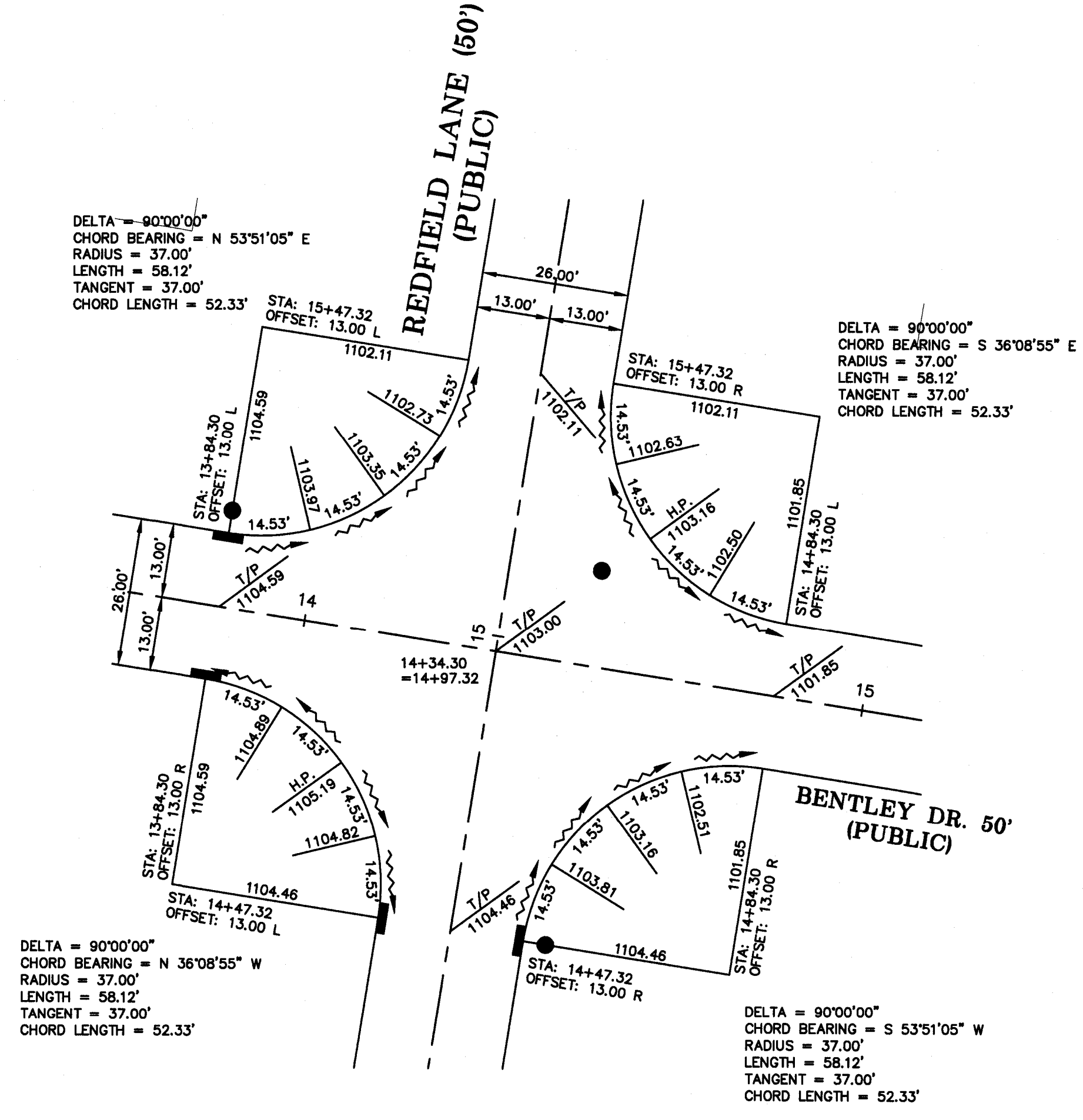


DELTA = 54°55'14"
CHORD BEARING = N 27°49'45" W
RADIUS = 37.00'
LENGTH = 35.47'
TANGENT = 19.23'
CHORD LENGTH = 34.12'



DELTA = 289°50'28"
CHORD BEARING = S 89°37'52" W
RADIUS = 50.00'
LENGTH = 252.93'
TANGENT = 35.11'
CHORD LENGTH = 57.47'

CONTRACTOR SHALL GRADE CENTER ISLAND AREA AS TO MAINTAIN POSITIVE DRAINAGE TO PAVEMENT.

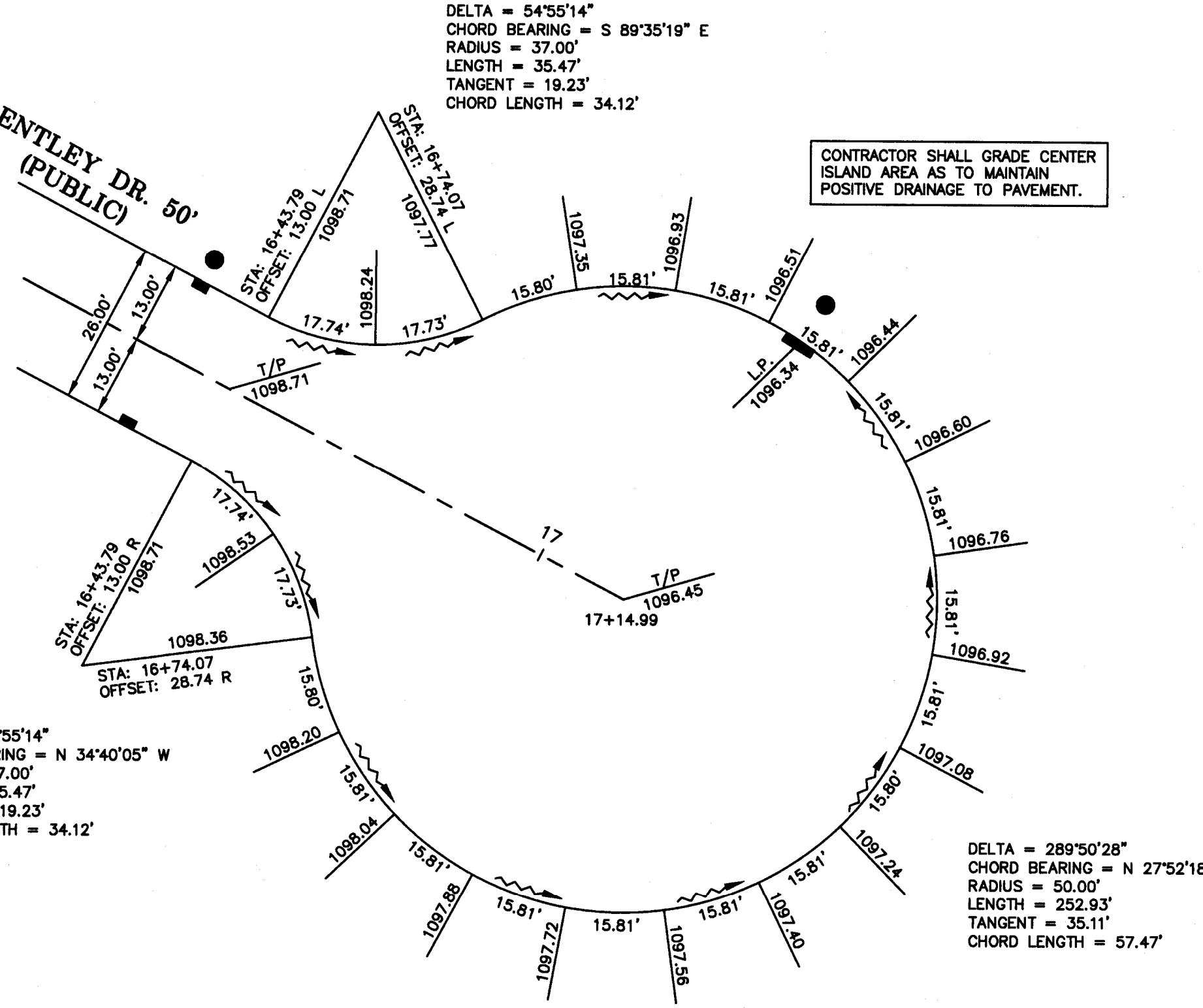


DELTA = 90°00'00"
CHORD BEARING = N 53°51'05" E
RADIUS = 37.00'
LENGTH = 58.12'
TANGENT = 37.00'
CHORD LENGTH = 52.33'

DELTA = 90°00'00"
CHORD BEARING = S 36°08'55" E
RADIUS = 37.00'
LENGTH = 58.12'
TANGENT = 37.00'
CHORD LENGTH = 52.33'

DELTA = 90°00'00"
CHORD BEARING = N 36°08'55" W
RADIUS = 37.00'
LENGTH = 58.12'
TANGENT = 37.00'
CHORD LENGTH = 52.33'

DELTA = 90°00'00"
CHORD BEARING = S 53°51'05" W
RADIUS = 37.00'
LENGTH = 58.12'
TANGENT = 37.00'
CHORD LENGTH = 52.33'



DELTA = 54°55'14"
CHORD BEARING = S 89°35'19" E
RADIUS = 37.00'
LENGTH = 35.47'
TANGENT = 19.23'
CHORD LENGTH = 34.12'

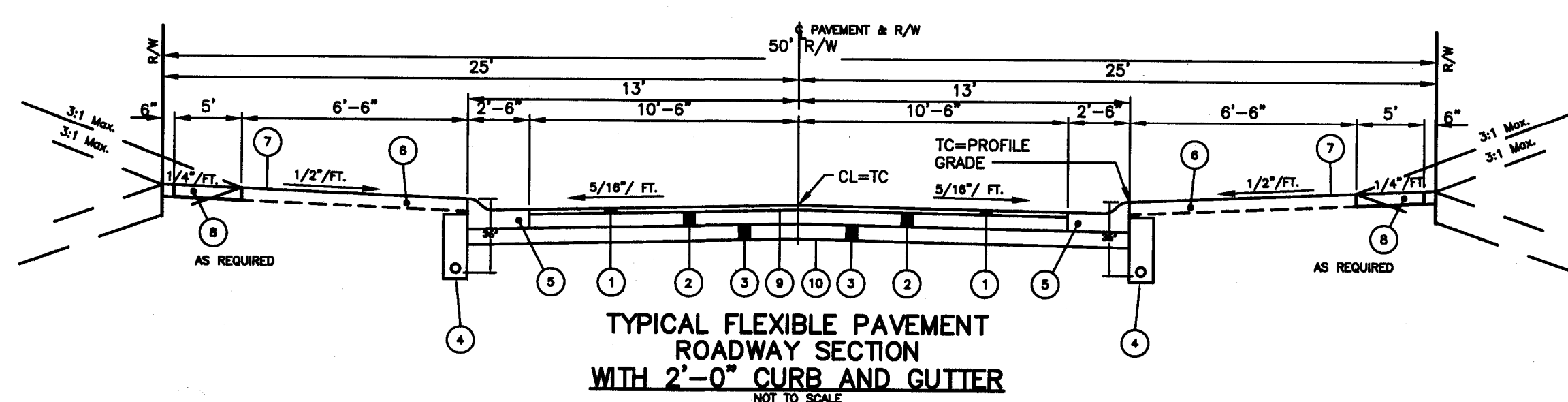
CONTRACTOR SHALL GRADE CENTER ISLAND AREA AS TO MAINTAIN POSITIVE DRAINAGE TO PAVEMENT.

DELTA = 54°55'14"
CHORD BEARING = N 34°40'05" W
RADIUS = 37.00'
LENGTH = 35.47'
TANGENT = 19.23'
CHORD LENGTH = 34.12'

DELTA = 289°50'28"
CHORD BEARING = N 27°52'18" E
RADIUS = 50.00'
LENGTH = 252.93'
TANGENT = 35.11'
CHORD LENGTH = 57.47'

O.D.O.T. SPECIFICATION REFERENCE

- ① ITEM 448 - 1 1/2" ASPHALTIC SURFACE COURSE, TYPE 1, PG 64-22
- ② ITEM 301 - 5" ASPHALT CONCRETE BASE
- ③ ITEM 304 - 6" AGGREGATE BASE, 703.17 MATERIAL
- ④ ITEM 605 - 4" DIA. PERFORATED UNDERDRAIN WITH GRANULAR FILTER AGGREGATE NO. 8. SEE DTL. SHT. SD-19
- ⑤ ITEM 609 - 2'-6" CONCRETE CURB & GUTTER, TYPE 2
- ⑥ ITEM 653 - TOPSOIL (T = 4" TYP.) OR ON-SITE MATERIAL
- ⑦ ITEM 659 - SEEDING AND MULCHING, CLASS 1
- ⑧ ITEM 608 - 4" THICK CONCRETE SIDEWALK, 6" AT DRIVEWAYS WITH 2" AGGREGATE BASE
- ⑨ ITEM 407 - TACK COAT
- ⑩ ITEM 204 - SUBGRADE COMPACTION & PROOF ROLLING



TYPICAL FLEXIBLE PAVEMENT ROADWAY SECTION WITH 2'-0" CURB AND GUTTER
NOT TO SCALE

GBC DESIGN, INC.
8978 West Market St. Akron, OH 44333-3886
Phone 330-596-0228

PULTE HOMES OF OHIO, LLC
387 MEDINA RD., SUITE 1700
MEDINA, OH 44256
REP.: STAN KATANIC

BENTLEY RESERVE
465 S. HAMETOWN RD.
COPLEY TOWNSHIP, OHIO
TYPICAL SECTION & INTERSECTION DETAILS

DRAWN BY:
T.G.W.
DATE:
JAN. 4, 2011
PROJECT NO.
36048D
DRAWING NO.
SD-18