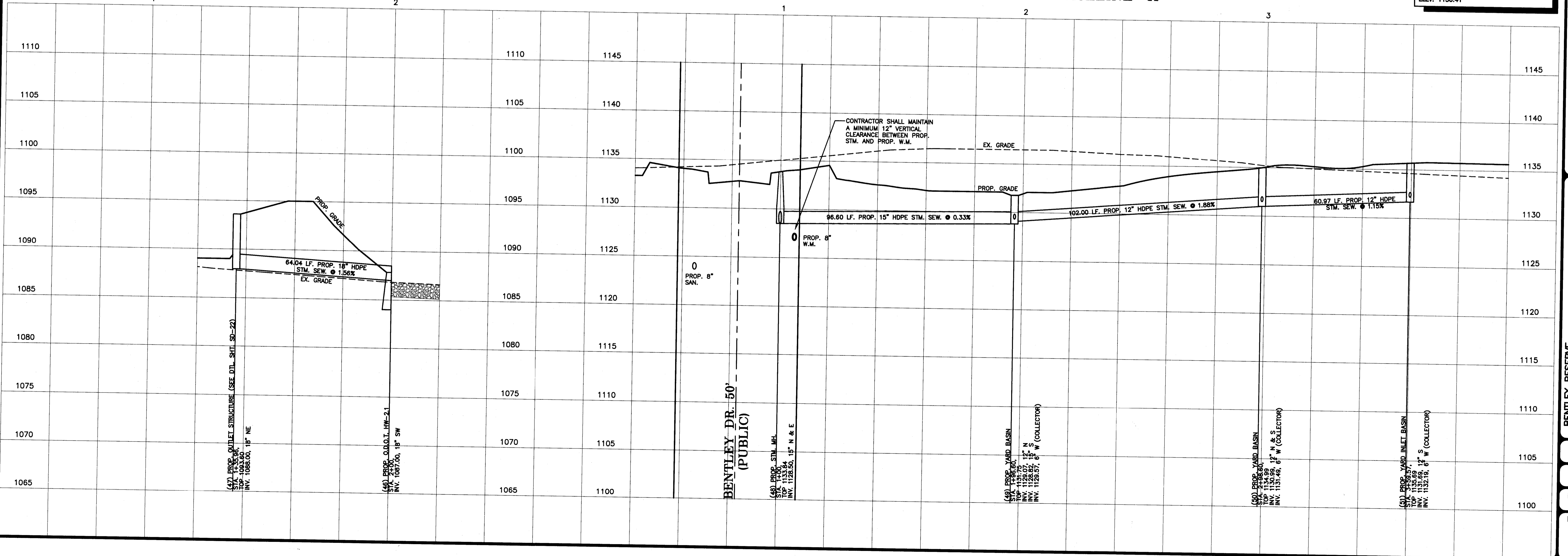


STORM BASELINE "G"

STORM BASELINE "H"



RCP = O.D.O.T. ITEM 706.02  
HDPE = O.D.O.T. ITEM 707.33

**NOTE:**  
THE CURB RAMPS BACK TO THE R/W ARE REQUIRED TO BE CONSTRUCTED DURING SITE IMPROVEMENT TO BE CONSTRUCTED. IN ADDITION, A 20" SECTION OF SIDEWALK IN EACH DIRECTION FROM THE CURB RAMPS OR AS DIRECTED BY THE ENGINEER, WILL BE REQUIRED TO BE CONSTRUCTED WHEN THE CURB RAMPS ARE CONSTRUCTED.

**SITE BENCH MARK:** TOP OF PK NAIL IN CURB AT EAST END OF ISLAND OF BAKO PROPERTY, GBC PT. #8042  
ELEV. 1136.49

**JOB BENCH MARK:** BOX CUT IN NOSE OF CURB AT EAST END OF ISLAND INTERSECTION OF RIDGE CREST DRIVE & HAMETOWN ROAD PER SUMMIT COUNTY IMPROVEMENT PLANS SUM-CR 253-1.03, GBC PT. #8054  
ELEV. 1130.41

**PULTE HOMES OF OHIO, LLC**  
387 MEDINA RD., SUITE 1700  
MEDINA, OH 44256  
REP.: STAN KATYANIC

BENTLEY RESERVE  
465 S. HAMETOWN RD.  
COPLEY TOWNSHIP, OHIO  
STORM BASELINE "G" & "H"

DRAWN BY:  
T.G.W.  
DATE:  
JAN. 4, 2011  
PROJECT NO.  
36048D  
DRAWING NO.  
SD-17

**GBC DESIGN, INC.**  
3878 West Market St. Akron, OH 44333-8886  
Phone 330-886-0228 Fax 330-886-8782