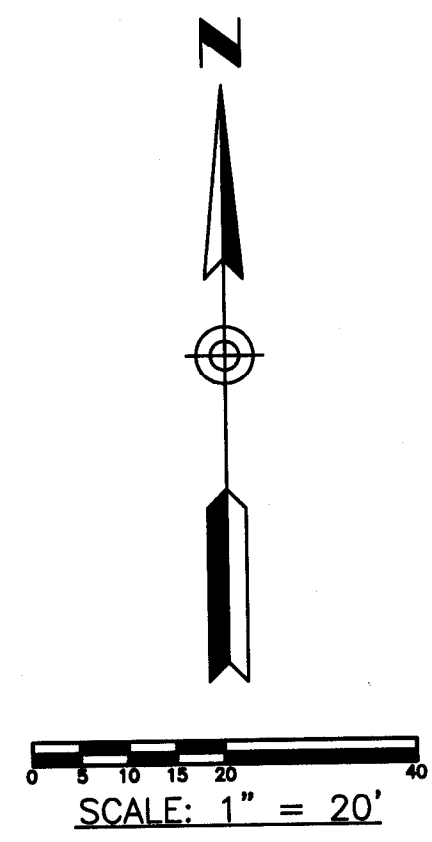
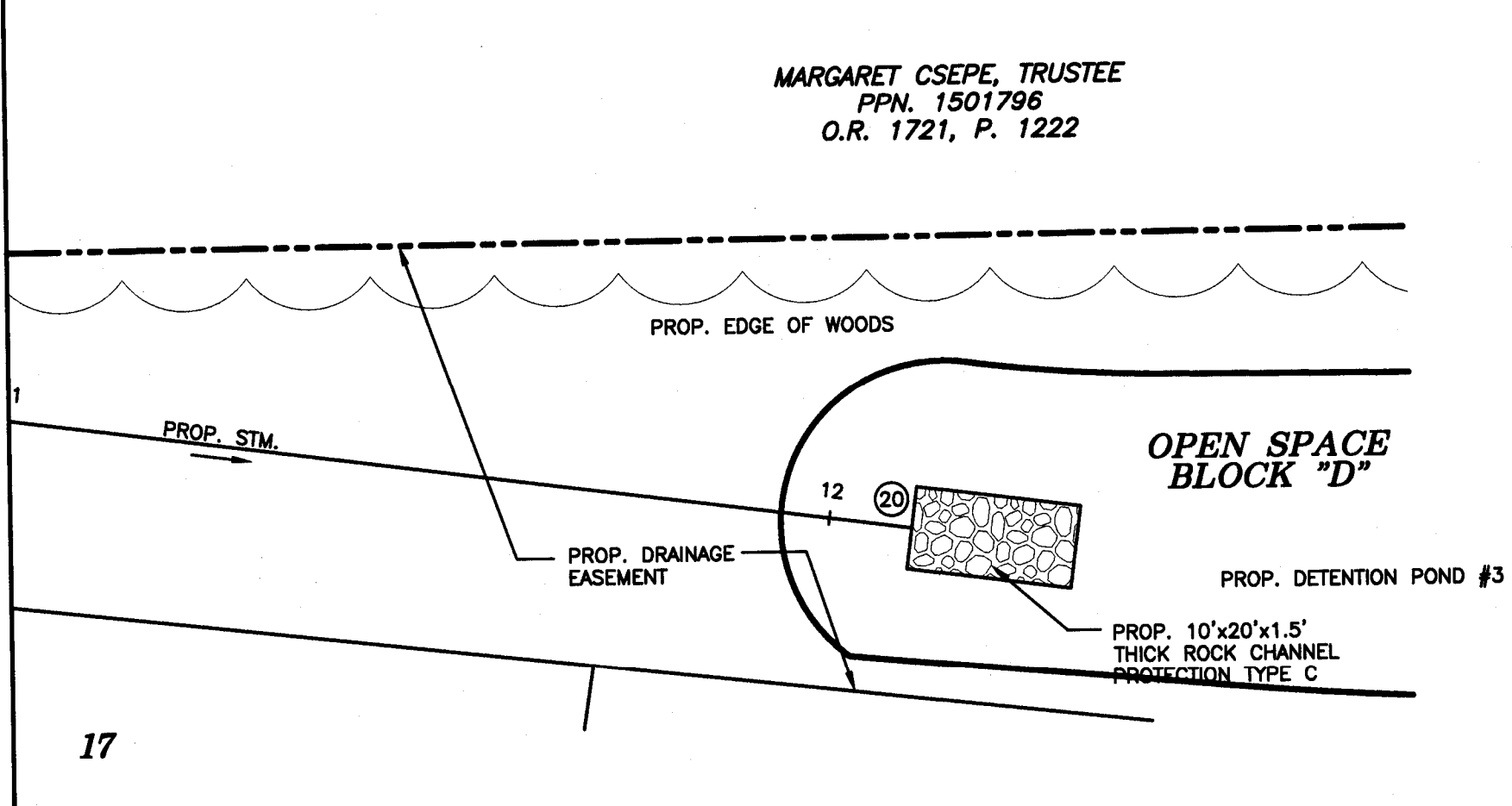
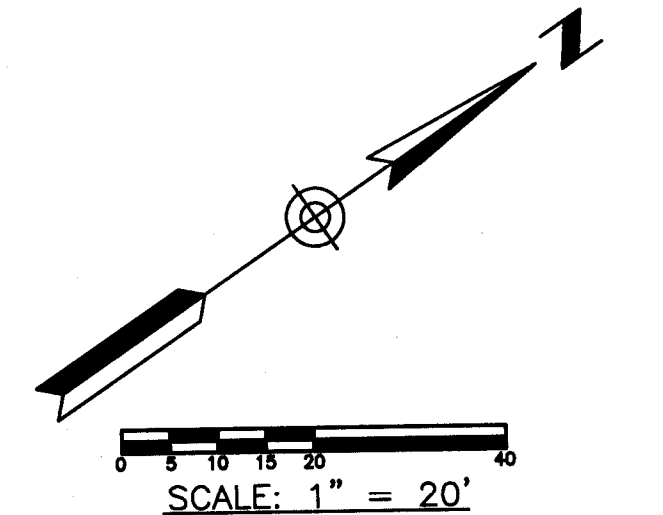
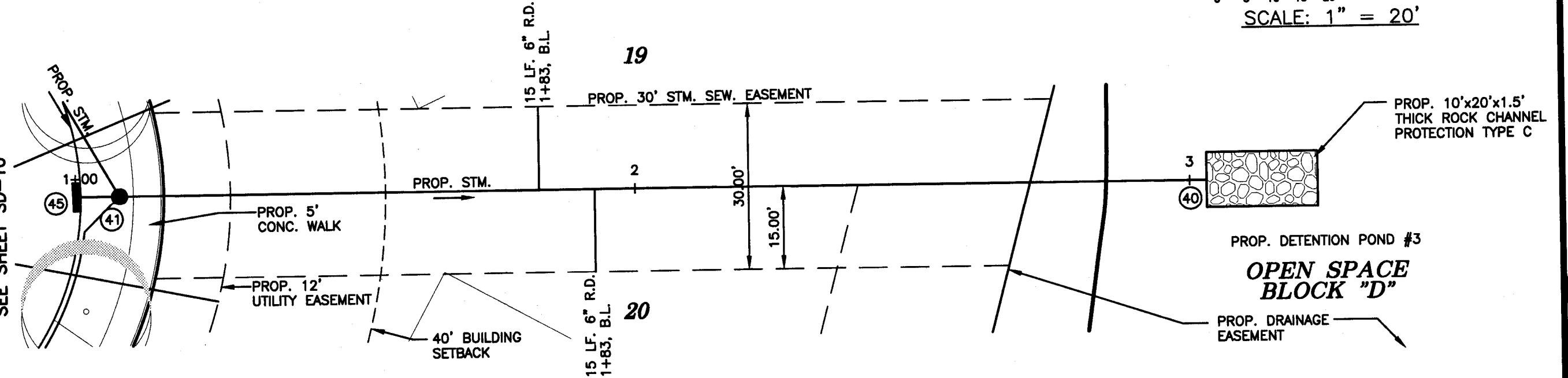


MATCH LINE STA. 9+50 SEE SHEET SD-15



BENTLEY DR. 50' (PUBLIC)
SEE SHEET SD-10



RCP = O.D.O.T. ITEM 706.02
HDPE = O.D.O.T. ITEM 707.33

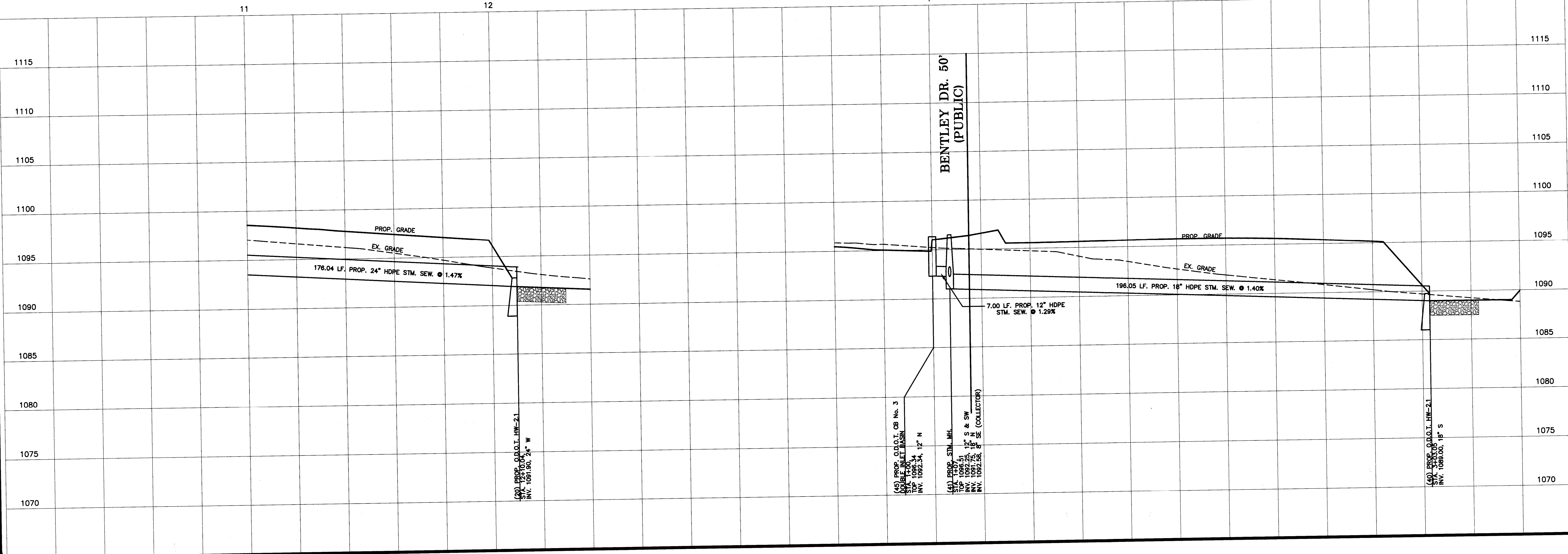
NOTE:
THE CURB RAMPS BACK TO THE R/W ARE REQUIRED TO BE CONSTRUCTED DURING SITE IMPROVEMENT CONSTRUCTION. IN ADDITION, A 20' SECTION OF SIDEWALK IN EACH DIRECTION FROM THE CURB RAMPS OR AS DIRECTED BY THE ENGINEER, WILL BE REQUIRED TO BE CONSTRUCTED WHEN THE CURB RAMPS ARE CONSTRUCTED.

SITE BENCH MARK: TOP OF PK NAIL IN CURB OF HAMETOWN ROAD AT NORTH END INTERSECTION. GBC PT. #8042
ELEV. 1136.49

JOB BENCH MARK: BOX CUT IN NOSE OF CURB AT EAST END OF ISLAND INTERSECTION OF RIDGE CREST DRIVE & HAMETOWN ROAD PER SUMMIT COUNTY IMPROVEMENT PLANS SUM-CR 253-1.03, GBC PT. #8054
ELEV. 1130.41

STORM BASELINE "E"

STORM BASELINE "F"



GBC DESIGN, INC.
9878 West Market St. Akron, OH 44333-8886
Phone 330-896-0228 Fax 330-896-8782

PULTE HOMES OF OHIO, LLC
387 MEDINA RD., SUITE 1700
MEDINA, OH 44256
REF.: STAN KATANIC

BENTLEY RESERVE
465 S. HAMETOWN RD.
COPLEY TOWNSHIP, OHIO
STORM BASELINE "E" (9+50 TO 12+10)
STORM BASELINE "F"

DRAWN BY:
T.G.W.
DATE:
JAN. 4, 2011
PROJECT NO.
36048D
DRAWING NO.
SD-16