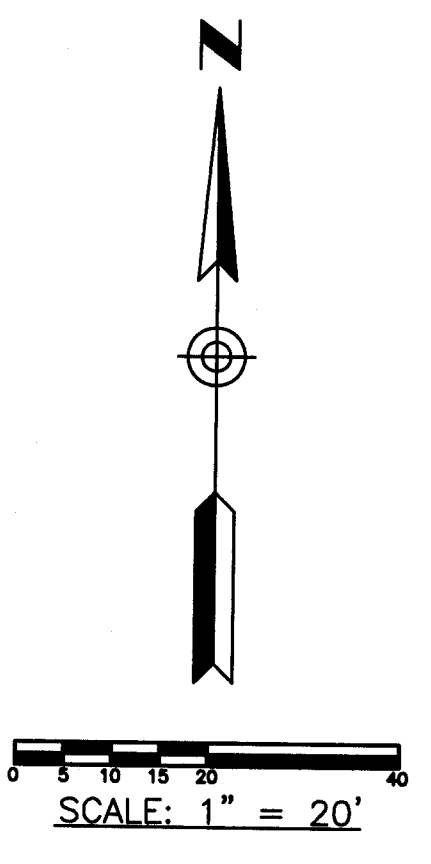
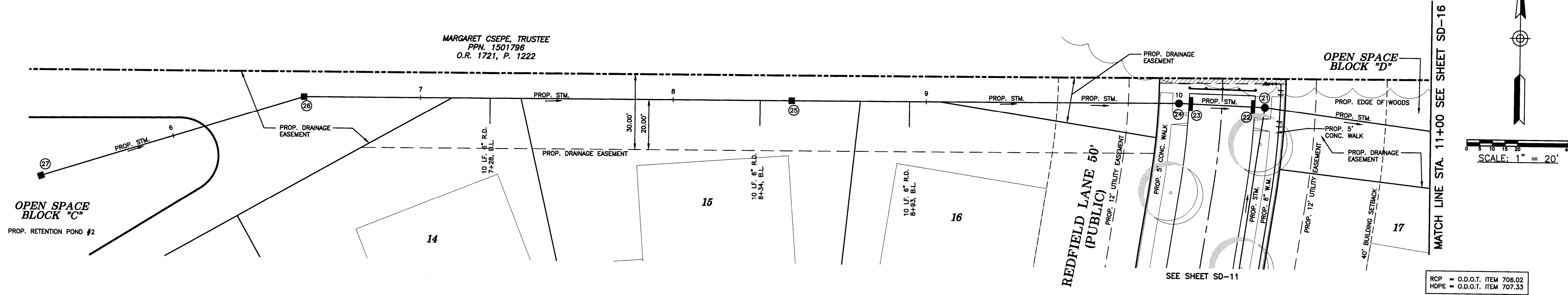


MARGARET CSEPE, TRUSTEE
PPN 1501796
O.R. 1721, P. 1222



MATCH LINE STA. 11+00 SEE SHEET SD-16

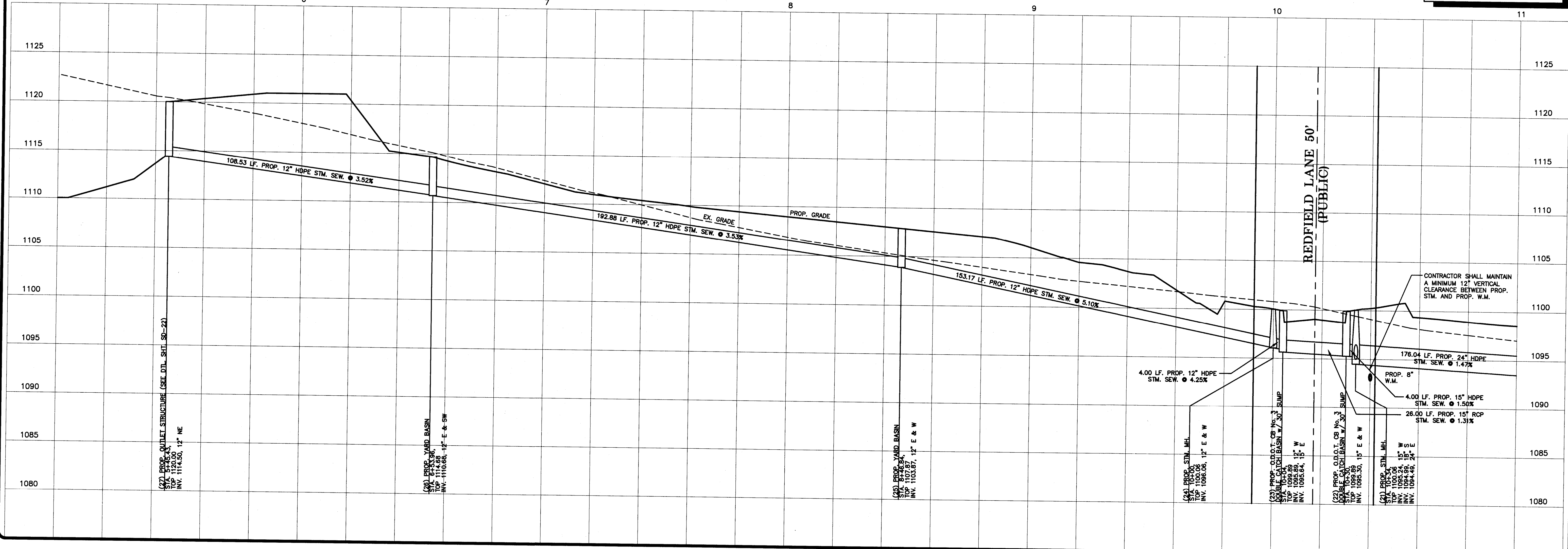
RCP = O.D.O.T. ITEM 706.02
HDPE = O.D.O.T. ITEM 707.33

NOTE:
THE CURB RAMP BACK TO THE R/W ARE REQUIRED TO BE CONSTRUCTED DURING SITE IMPROVEMENT CONSTRUCTION. IN ADDITION, A 20' SECTION OF SIDEWALK IN EACH DIRECTION FROM THE CURB RAMP OR AS DIRECTED BY THE ENGINEER, WILL BE REQUIRED TO BE CONSTRUCTED WHEN THE CURB RAMP ARE CONSTRUCTED.

SITE BENCH MARK: TOP OF PK NAIL IN CURB AT EAST END OF ISLAND OF HAMETOWN ROAD AT NORTH END OF BAKO PROPERTY, GBC PT. #8042
ELEV. 1136.49

JOB BENCH MARK: BOX CUT IN NOSE OF CURB AT EAST END OF ISLAND INTERSECTION OF RIDGE CREST DRIVE & HAMETOWN ROAD PER SUMMIT COUNTY IMPROVEMENT PLANS SUM-CR 253-1.03, GBC PT. #8054
ELEV. 1130.41

STORM BASELINE "E"



GBC DESIGN, INC.
8976 West Main St., Akron, OH 44399-8986
Phone 330-886-0226 Fax 330-886-0762

PULTE HOMES OF OHIO, LLC
387 MEDINA RD., SUITE 1700
MEDINA, OH 44256
REP.: STAN KATANIC

BENTLEY RESERVE
465 S. HAMETOWN RD.
COPLY TOWNSHIP, OHIO
STORM BASELINE "E"
(STA. 5+00 TO 11+00)

DRAWN BY:
T.G.W.
DATE:
JAN. 4, 2011
PROJECT NO.
36048D
DRAWING NO.
SD-15