

**NOTE:**  
THE CURB RAMPS BACK TO THE R/W ARE REQUIRED TO BE CONSTRUCTED DURING SITE IMPROVEMENT CONSTRUCTION. IN ADDITION, A 20' SECTION OF SIDEWALK IN EACH DIRECTION FROM THE CURB RAMPS OR AS DIRECTED BY THE ENGINEER, WILL BE REQUIRED TO BE CONSTRUCTED WHEN THE CURB RAMPS ARE CONSTRUCTED.

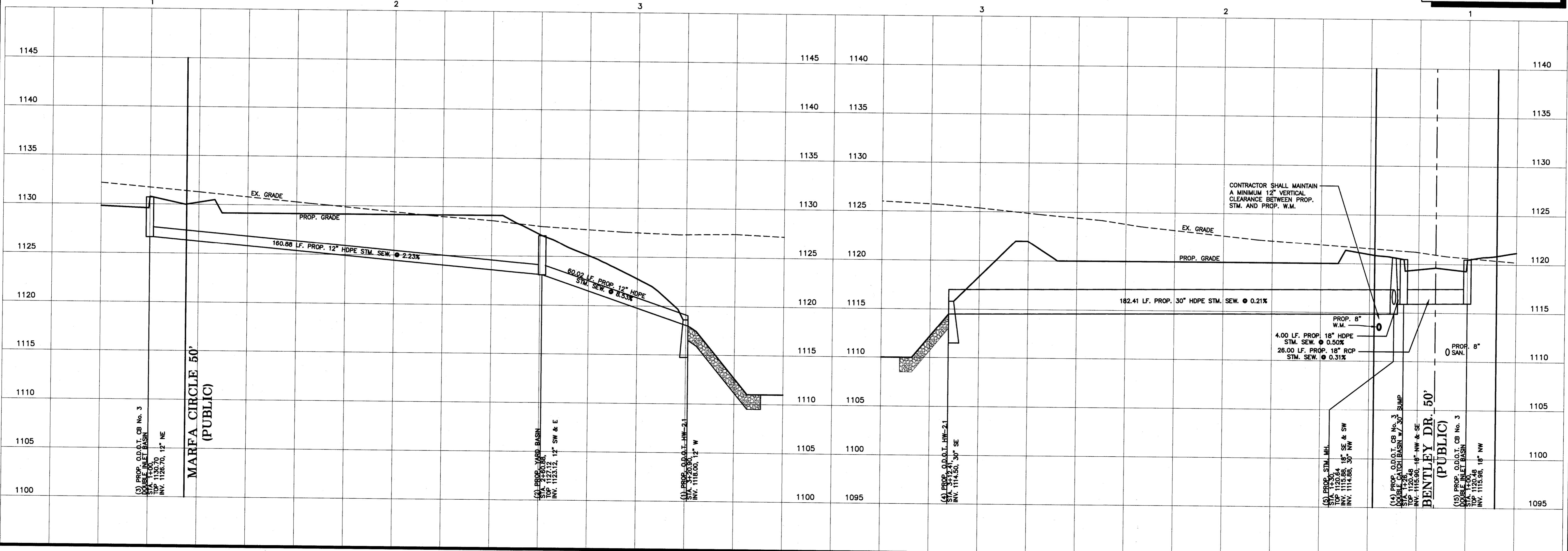
RCP = O.D.O.T. ITEM 706.02  
HDPE = O.D.O.T. ITEM 707.33

**SITE BENCH MARK:** TOP OF PK NAIL IN CURB OF HAMETOWN ROAD AT NORTH END OF BAKO PROPERTY, GBC PT. #8042  
ELEV. 1136.49

**JOB BENCH MARK:** BOX CUT IN NOSE OF CURB AT EAST END OF ISLAND INTERSECTION OF RIDGE CREST DRIVE & HAMETOWN ROAD PER SUMMIT COUNTY IMPROVEMENT PLANS SUM-CR 253-1.03, GBC PT. #8054  
ELEV. 1130.41

STORM BASELINE "A"

STORM BASELINE "B"



**PULTE HOMES OF OHIO, LLC**  
387 MEDINA RD., SUITE 1700  
MEDINA, OH 44256  
REP.: STAN KATANIC

**BENTLEY RESERVE**  
465 S. HAMETOWN RD.  
COPLEY TOWNSHIP, OHIO  
STORM BASELINE "A" & "B"

DRAWN BY: T.G.W.  
DATE: JAN. 4, 2011  
PROJECT NO. 36048D  
DRAWING NO. SD-13

**GBC DESIGN, INC.**  
3878 West Market St. Akron, OH 44388-3886  
Phone 330-836-0228 Fax 330-836-5782